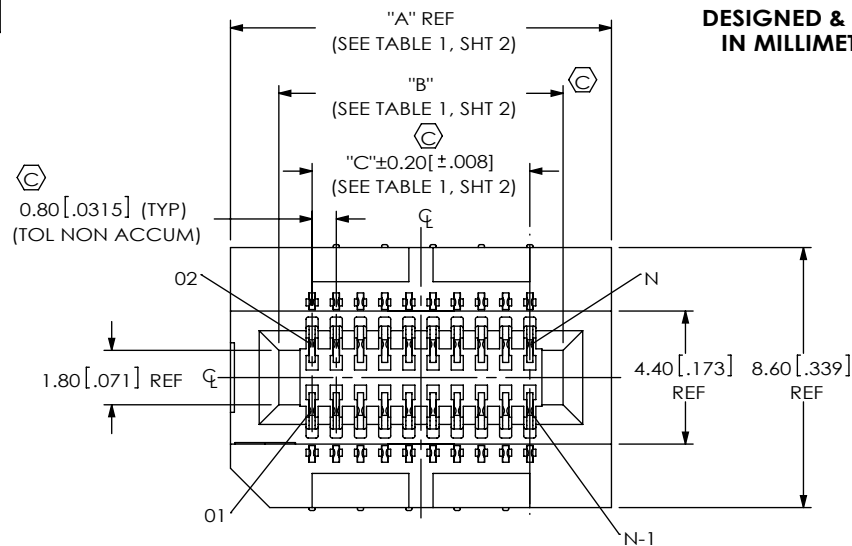


DO NOT  
SCALE FROM  
THIS PRINT



DESIGNED & DIMENSIONED  
IN MILLIMETERS[INCHES]

MEC8-1XX-XX-X-VXX

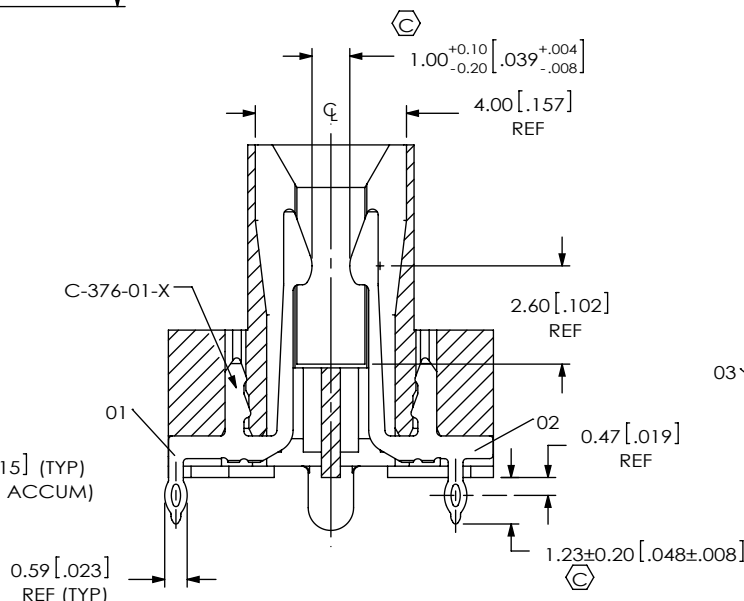
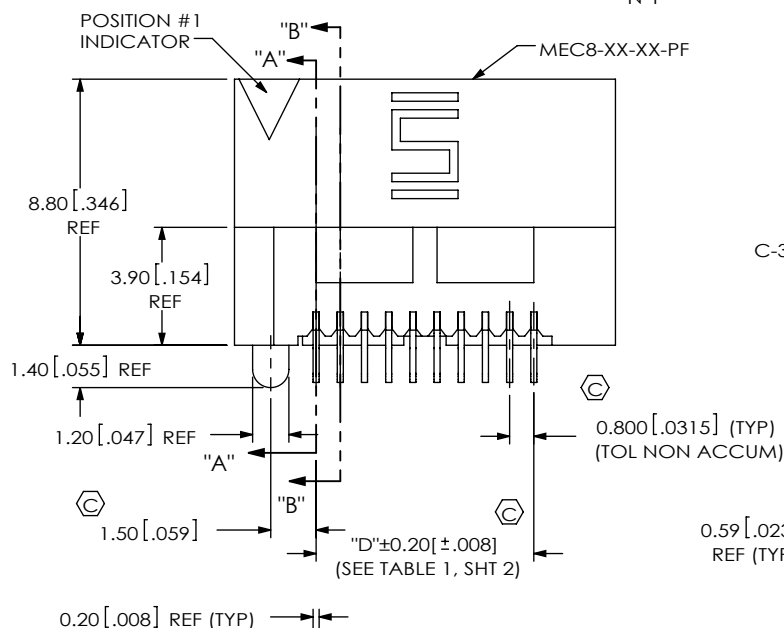
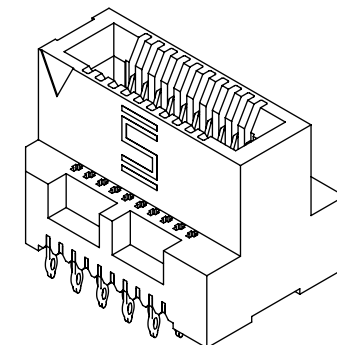
NO OF POSITIONS  
-10, -20, -30, \*-35, 40  
\*-45, \*-50, \*-60, \*-70  
(PER ROW)

CARD THICKNESS  
-02: 1.57mm [.062] THICK CARD

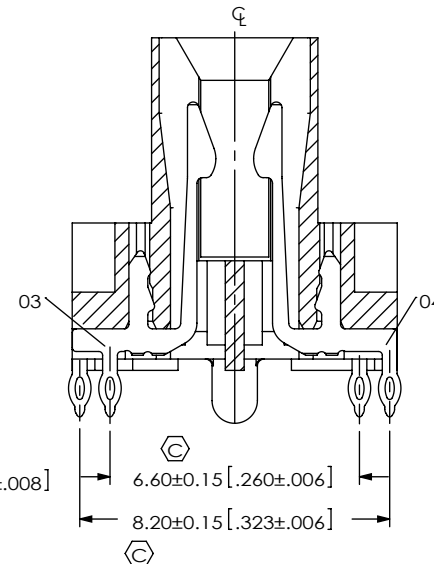
PLATING SPECIFICATION  
-L: 10μ" SELECTIVE GOLD IN CONTACT  
AREA, MATTE TIN ON TAIL  
-S: 30μ" SELECTIVE GOLD IN CONTACT  
AREA, MATTE TIN ON TAIL

(\* = NOT TOOLED)

TAIL  
-VP: PRESS FIT  
\*-VT1: VT-TH, .062" PCB  
(SEE FIG 3, SHT 2)  
\*-VT2: VT-TH, .093" PCB  
(SEE FIG 3, SHT 2)



SECTION "A"- "A"  
SCALE 5 : 1



SECTION "B"- "B"  
SCALE 5 : 1

(DIFFERENT AS SHOWN, OTHERWISE  
SAME AS SECTION "A"- "A")

FIG 1  
MEC8-110-02-X-VP SHOWN  
(FOR POSITIONS -10, -20, -30 & \*-35)

NOTES:

1. REPRESENTS A CRITICAL DIMENSION.
2. MAXIMUM BURR ALLOWANCE: 0.04[.0015].
3. MINIMUM PUSHOUT FORCE: .5 LB.
4. ASSEMBLIES TO BE PACKAGED IN TRAYS.

UNLESS OTHERWISE SPECIFIED,  
DIMENSIONS ARE IN MILLIMETERS.  
TOLERANCES ARE:  
DECIMALS ANGLES  
X.X: ±0.3 [.01]  
X.XX: ±0.13 [.005]  
X.XXX: ±0.051 [.0020]

PROPRIETARY NOTE

THIS DOCUMENT CONTAINS INFORMATION  
CONFIDENTIAL AND PROPRIETARY TO  
SAMTEC, INC. AND SHALL NOT BE REPRODUCED  
OR TRANSFERRED TO OTHER DOCUMENTS OR  
DISCLOSED TO OTHERS OR USED FOR ANY  
PURPOSE OTHER THAN THAT WHICH IT WAS  
OBTAINED WITHOUT THE EXPRESSED WRITTEN  
CONSENT OF SAMTEC, INC.

MATERIAL: DO NOT SCALE DRAWING

INSULATOR: LCP, COLOR: BLACK  
CONTACT: COPPER

SHEET SCALE: 4:1

DESCRIPTION:

0.80 MM PRESS FIT MINI-EDGE CARD ASSEMBLY

DWG. NO.

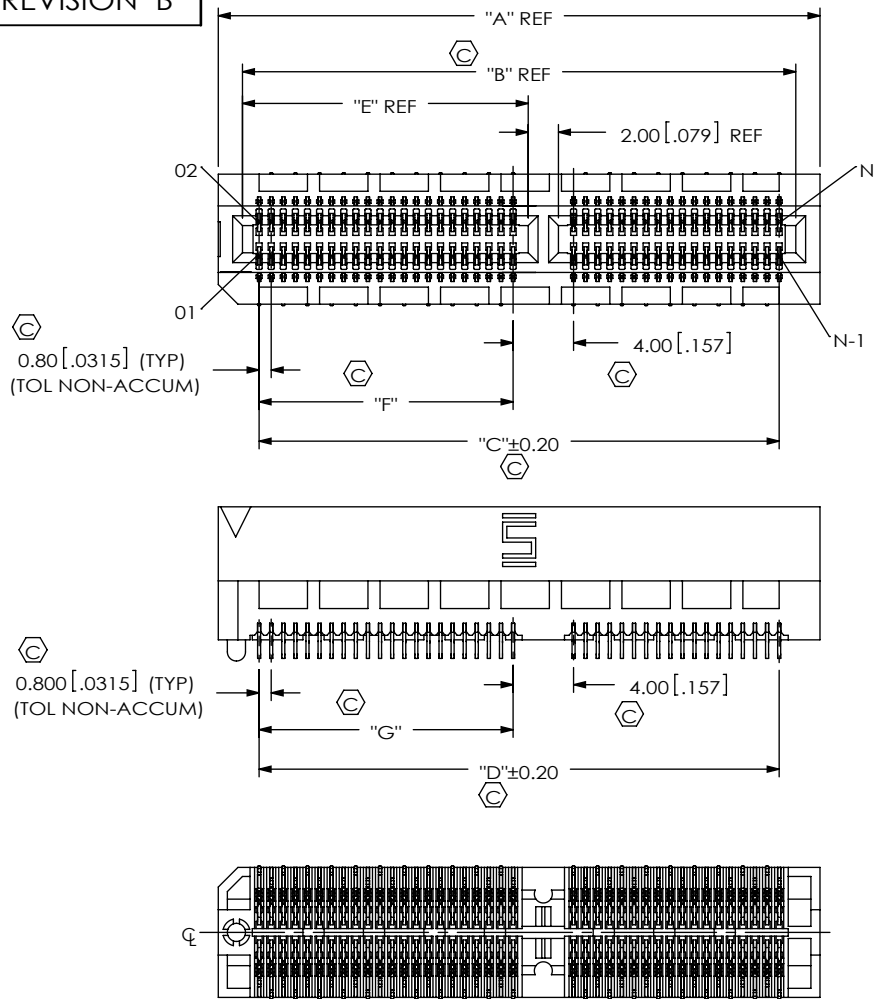
MEC8-1XX-XX-X-VXX

BY: ROY LUO

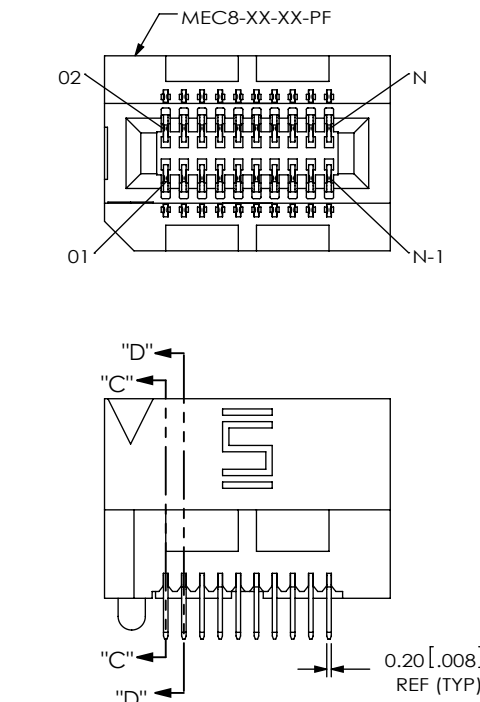
02/04/2012

SHEET 1 OF 2

# REVISION B



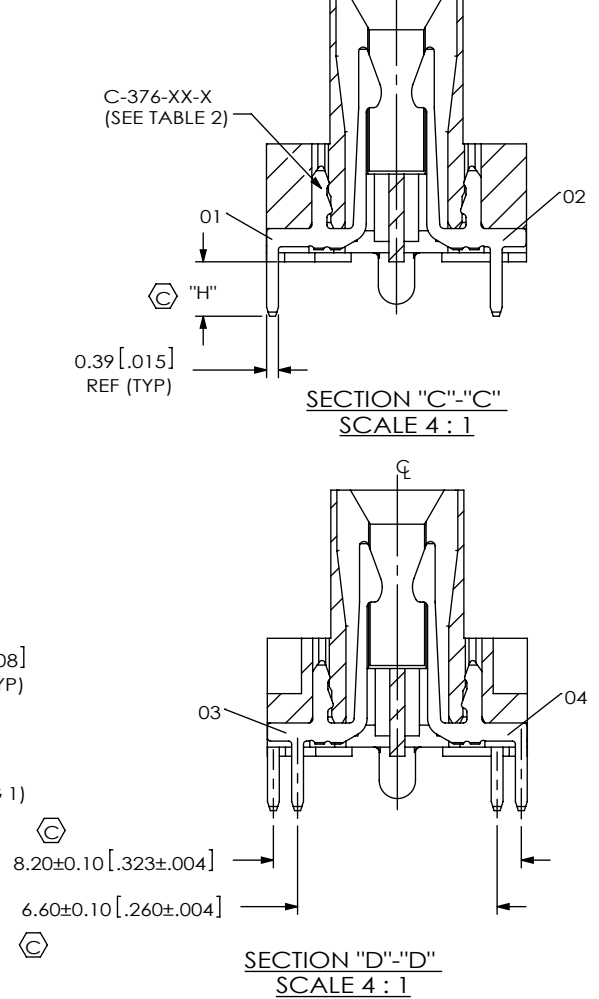
**FIG 2**  
MEC8-140-02-X-VP SHOWN  
(DIFFERENT AS SHOWN, OTHERWISE SAME AS FIG 1)  
(FOR POSITIONS -40, \*-45, \*-50, \*-60 & \*-70)



**FIG 3**  
MEC8-110-02-X-VTX SHOWN  
(DIFFERENT AS SHOWN, OTHERWISE SAME AS FIG 1)  
(FOR POSITIONS -10, -20, -30 & \*-35)  
(\* = NOT TOOLED)

TABLE 2		
TAIL	"H"	C-376-XX-X
*-VT1	1.80 [0.071]	C-376-02-X
*-VT2	2.60 [0.102]	C-376-03-X

(\* = NOT TOOLED)



**SECTION "D"-"D"**  
SCALE 4 : 1  
(DIFFERENT AS SHOWN, OTHERWISE SAME AS SECTION "C"-"C")

**TABLE 1**

No OF POS	"A"	"B"	"C"	"D"	"E"	"F"	"G"
-10	12.60 [0.496]	9.40 [0.370]	7.20 [0.283]	7.200 [0.2835]	N/A	N/A	N/A
-20	20.60 [0.811]	17.40 [0.685]	15.20 [0.598]	15.200 [0.5984]	N/A	N/A	N/A
-30	28.60 [1.126]	25.40 [1.000]	23.20 [0.913]	23.200 [0.9134]	N/A	N/A	N/A
*-35	32.60 [1.283]	29.40 [1.157]	27.20 [1.071]	27.200 [1.0709]	N/A	N/A	N/A
-40	39.80 [1.567]	36.60 [1.441]	34.40 [1.354]	34.400 [1.3543]	18.90 [0.744]	16.80 [0.661]	16.800 [0.6614]
*-45	43.80 [1.724]	40.60 [1.598]	38.40 [1.512]	38.400 [1.5118]	20.50 [0.807]	18.40 [0.724]	18.400 [0.7244]
*-50	47.80 [1.882]	44.60 [1.756]	42.40 [1.669]	42.400 [1.6693]	22.90 [0.902]	20.80 [0.819]	20.800 [0.8189]
*-60	55.80 [2.197]	52.60 [2.071]	50.40 [1.984]	50.400 [1.9843]	26.90 [1.059]	24.80 [0.976]	24.800 [0.9764]
*-70	63.80 [2.512]	60.60 [2.386]	58.40 [2.299]	58.400 [2.2992]	30.90 [1.217]	28.80 [1.134]	28.800 [1.1339]

(\* = NOT TOOLED)

F:\DWG\MISC\MKTG\MEC8-1XX-XX-X-VXX-MKT.SLDDRW

## PROPRIETARY NOTE

THIS DOCUMENT CONTAINS INFORMATION CONFIDENTIAL AND PROPRIETARY TO SAMTEC, INC. AND SHALL NOT BE REPRODUCED OR TRANSFERRED TO OTHER DOCUMENTS OR DISCLOSED TO OTHERS OR USED FOR ANY PURPOSE OTHER THAN THAT WHICH IT WAS OBTAINED WITHOUT THE EXPRESSED WRITTEN CONSENT OF SAMTEC, INC.

DO NOT SCALE DRAWING

SHEET SCALE: 2:1

# samtec

520 PARK EAST BLVD, NEW ALBANY, IN 47150  
PHONE: 812-944-6733 FAX: 812-948-5047  
e-Mail: info@SAMTEC.com code 55322

DESCRIPTION:  
0.80 MM PRESS FIT MINI-EDGE CARD ASSEMBLY  
DWG. NO.

**MEC8-1XX-XX-X-VXX**

BY: ROY LUO 02/04/2012 SHEET 2 OF 2