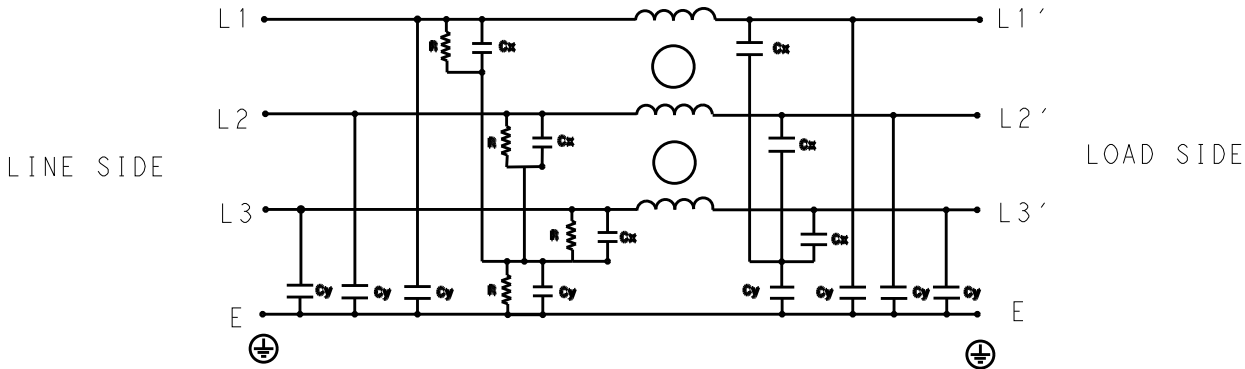


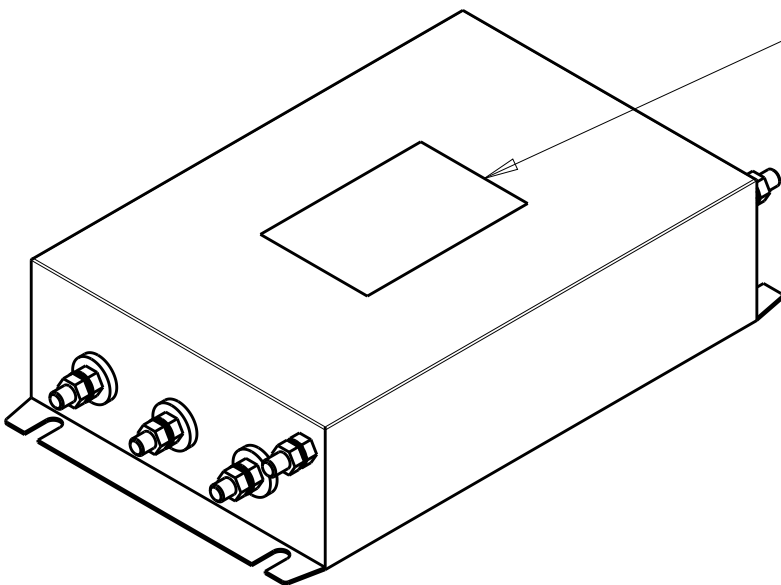
| P | LTR | DESCRIPTION | DATE | DWN | APVD |
|---|-----|-----------------|-----------|-----|------|
| | B | INITIAL RELEASE | 07JUL2020 | SB | LI |
| | | | | | |
| | | | | | |



SCHEMATIC

TYPICAL INSERTION LOSS
COMMON MODE 50/50Ω; DIFFERENTIAL MODE 50/50Ω

| MHz | 0.01 | 0.05 | 0.15 | 0.5 | 1 | 3 | 5 | 10 | 30 |
|-----|------|------|------|-----|----|----|----|----|----|
| CM | 32 | 35 | 51 | 51 | 47 | 39 | 35 | 29 | 26 |
| DM | 33 | 36 | 52 | 52 | 47 | 40 | 37 | 31 | 25 |



LABEL TO TE
MARKING SPECIFICATION

SAFETY ORGANIZATIONS

THIS FILTER WILL BE FORMALLY RECOGNIZED, CERTIFIED OR APPROVED BY THE LISTED AGENCY. THEREFORE, ALL TEST/REQUIREMENTS SPECIFIED IN THE LATEST REVISION OF THE FOLLOWING AGENCY STANDARDS WILL BE MET:

UL RECOGNIZED* 250A 440V 50Hz/60Hz 40°C
CSA CERTIFIED** 250A 440V 50Hz/60Hz 40°C

*31 JULY 2020 ; **31 AUGUST 2020

OPERATING SPECIFICATION

LINE CURRENT/VOLTAGE: 250A, 440VAC
LINE FREQUENCY: 50/60Hz

MAXIMUM LEAKAGE CURRENT: 20mA @ 230VAC, 50Hz

OPERATING AMBIENT TEMPERATURE RANGE @ RATED CURRENT: -25°C TO +40°C

IN AN AMBIENT, T_a, HIGHER THAN 40°C, THE MAXIMUM OPERATING CURRENT, I_o, IS AS FOLLOWS:

$$I_o = I_r \sqrt{\frac{85 - T_a}{45}}$$

RELIABILITY SPECIFICATIONS

STORAGE TEMPERATURE: -40°C TO +85°C
HUMIDITY: 21 DAYS @ 40°C AND 95% RH

TEST SPECIFICATIONS

INDUCTANCE, NOMINAL: 0.12mH

CAPACITANCE @ 1kHz
LINE TO GROUND, NOMINAL: 2.04μF
LINE TO LINE, NOMINAL: 6.8μF


DISCHARGE RESISTOR
L/G I.R. 1MΩ 2W
L/L I.R. 2MΩ 2W
L/N I.R. XXX
N/G I.R. XXX
IR (NO DISCHARGE RESISTOR) 20°C, 50% RH AND 100VDC, MIN: 6MΩ

RECOMMENDED RECEIVING INSPECITON HIPOT

LINE TO GROUND FOR 1 MINUTE: 2632VDC
LINE TO LINE FOR 1 MINUTE: 1892VDC

FILTER APPROVAL

THE BEST WAY TO SELECT AND QUALIFY A FILTER IS FOR YOUR ENGINEERING TO TEST THE UNIT IN YOUR EQUIPMENT.

| | | | | | |
|--|--|-----------------------------------|---|-----------|--------------------|
| THIS DRAWING IS A CONTROLLED DOCUMENT. | | DWN 04MAR2020 SHRICARANA B |  TE Connectivity | | |
| DIMENSIONS: mm | | CHK 04MAR2020 LEO IRUDHAYARAJ | | | |
| TOLERANCES UNLESS OTHERWISE SPECIFIED: | | APVD 04MAR2020 LEO IRUDHAYARAJ | | | |
| 0 PLC ±0.5 1 PLC ±0.4 2 PLC ±0.4 3 PLC ±0.130 4 PLC ±0.0500 ANGLES ±0.5 | | PRODUCT SPEC | | | |
| MATERIAL | | FINISH | NAME POWER LINE FILTER 250KEMS6AFPD | | |
| - | | - | SIZE | CAGE CODE | DRAWING NO |
| - | | - | A3 | 00779 | C-2-1609967-6 |
| - | | - | WEIGHT | - | RESTRICTED TO |
| - | | - | CUSTOMER DRAWING | SCALE 1:4 | SHEET 1 OF 2 REV B |

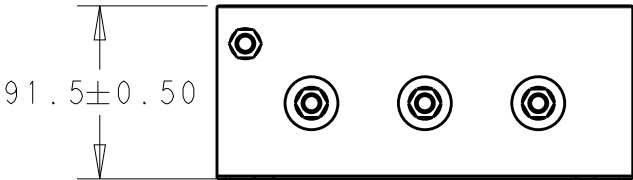
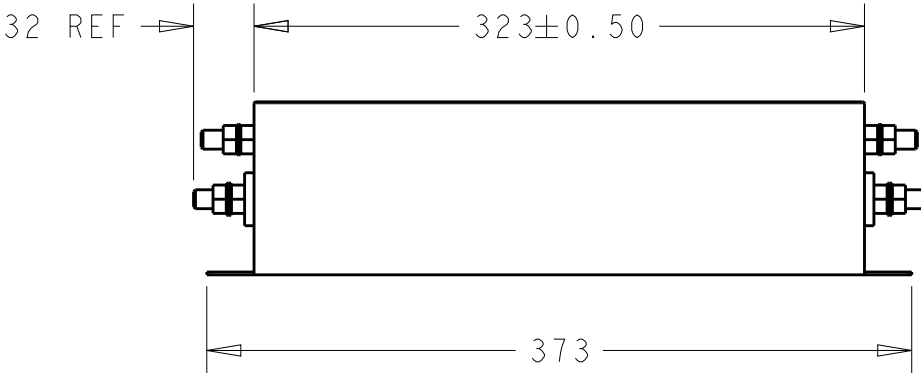
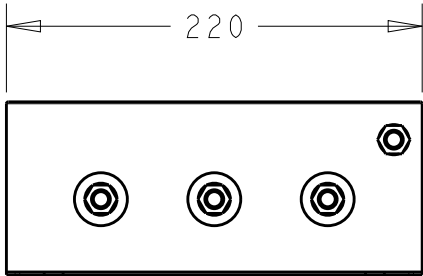
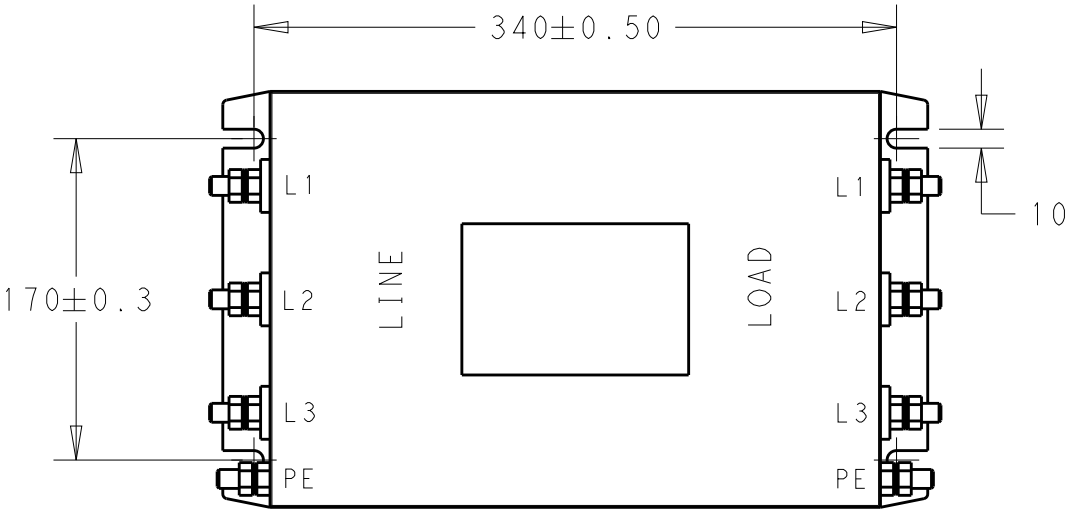
© 2020 TE Connectivity. All Rights Reserved.


NOTE 1 GROUND CONNECTION:
DO NOT LOOSEN INNER GROUND NUTS.
TORQUE OUTER TERMINAL /GROUND NUTS: 4-10Nm

NOTE 2 INPUT OUTPUT CONNECTION TERMINAL
AWG SIZE: XXX
THREADED BOLT SIZE FOR TERMINAL: M10
THREADED BOLT SIZE FOR GROUND: M10

REVISIONS

| P | LTR | DESCRIPTION | DATE | DWN | APVD |
|---|-----|-------------|------|-----|------|
| | | SEE SHEET 1 | | | |
| | | | | | |
| | | | | | |
| | | | | | |



| | | | | | |
|--|--|-----------------------------------|---|-----------------|----------|
| THIS DRAWING IS A CONTROLLED DOCUMENT. | | DWN 04MAR2020 SHRICHARANA B |  TE Connectivity | | |
| DIMENSIONS: mm | | CHK 04MAR2020 LEO IRUDHAYARAJ | | | |
| TOLERANCES UNLESS OTHERWISE SPECIFIED: | | APVD 04MAR2020 LEO IRUDHAYARAJ | NAME POWER LINE FILTER 250KEMS6AFPD | | |
| 0 PLC ±0.5 1 PLC ±0.4 2 PLC ±0.4 3 PLC ±0.130 4 PLC ±0.0500 ANGLES ±0.5 | | PRODUCT SPEC - | SIZE A300779 | | |
| MATERIAL - | | APPLICATION SPEC - | CAGE CODE C-2-1609967-6 | | |
| FINISH - | | WEIGHT - | DRAWING NO C-2-1609967-6 | | |
| CUSTOMER DRAWING | | SCALE 1:4 | | SHEET 2 OF 2 | REV B |