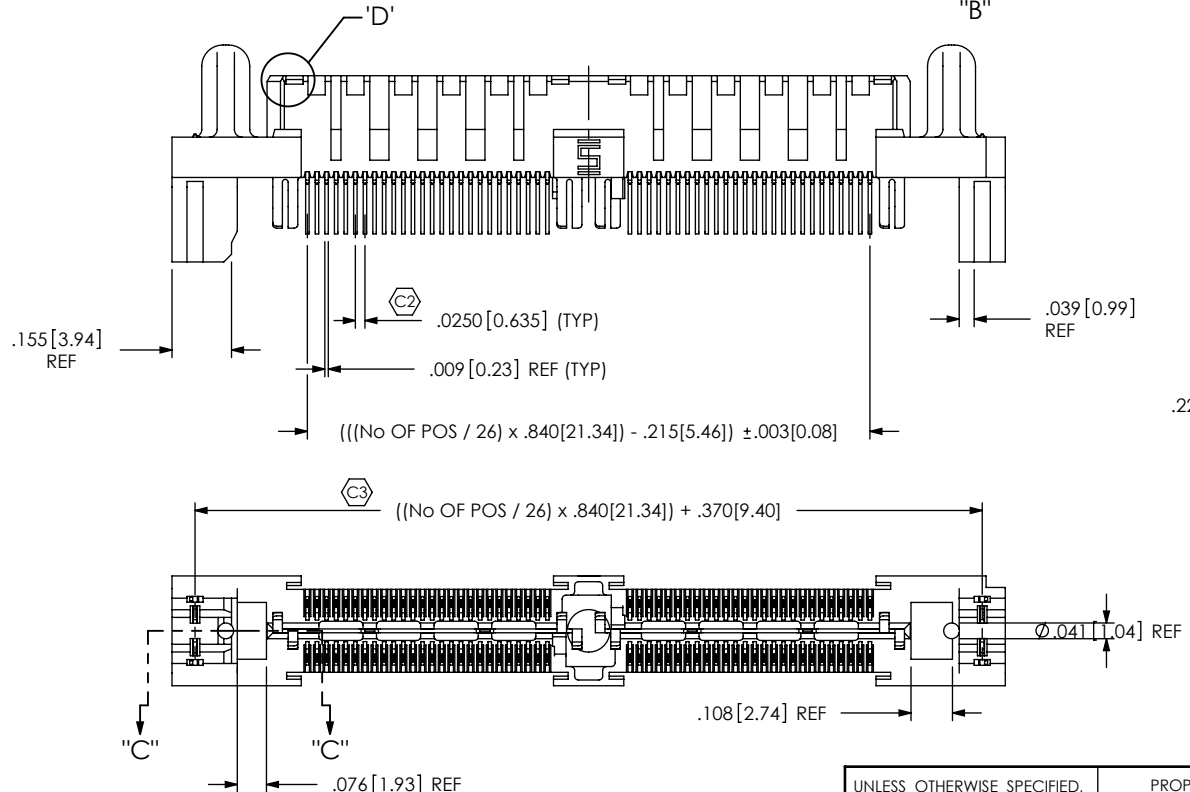
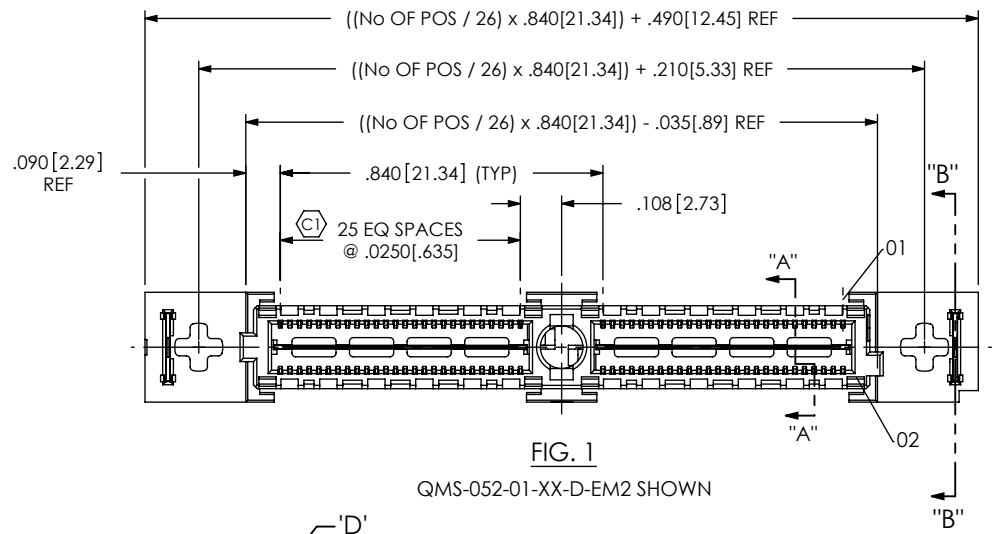


DO NOT
SCALE FROM
THIS PRINT



QMS-XXX-XX-XX-D-EM2-XXX-XX

No OF POSITIONS
-026, -052, -078,
-104, *-130
(PER ROW)

LEAD STYLE
-01

PLATING SPECIFICATION
-S: SELECTIVE GOLD (USE T-1M25-01-S)
-SL: SELECTIVE LIGHT GOLD (USE
T-1M25-01-SL)
-H: HEAVY GOLD (USE T-1M25-01-H)
(ALL PLATING STYLES USE T-1G22-01-G
& WT-17-GF)
-L: LIGHT GOLD, MATTE TIN TAILS
(USE T-1M25-01-L)

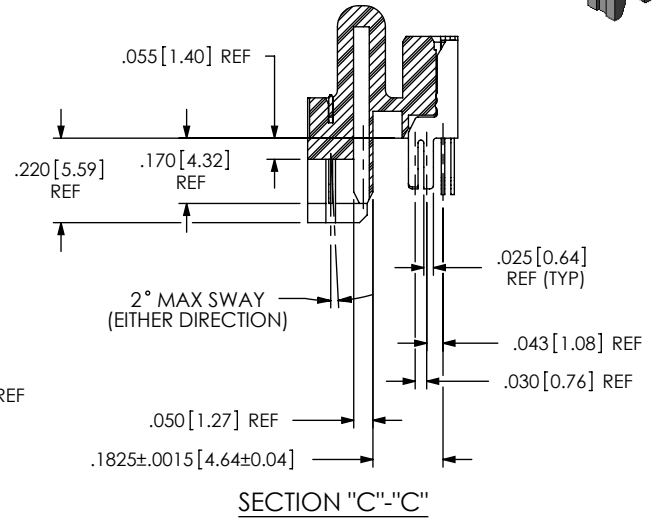
PACKAGING OPTION
-TR: TAPE AND REEL PACKAGING
(-026 & -052 WITH NO OPTIONS
-026 & -052 WITH -PC4)
(-026 WITH -PC8)

POWER COMBO OPTION
-PC4: 4 POWER POS PER END
-PC8: 8 POWER POS PER END
(SEE FIG. 2, SHEET 3)
[-PCX AVAILABLE ON POSITIONS
-026, -052 & -078 ONLY]

-EM2: EDGE MOUNT

ROW SPECIFICATION
-D: DOUBLE

SEE NOTE 4

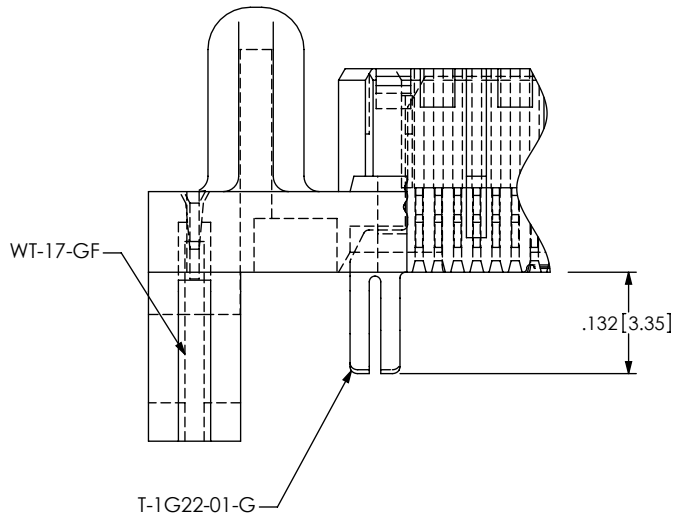


- NOTES:
1. \odot REPRESENTS A CRITICAL DIMENSION.
 2. BURR ALLOWANCE: .0015[0.038] MAX.
 3. MINIMUM PUSHOUT FORCE: SIGNAL: .5 LB, GROUND: 1 LB.
 4. TERMINALS IN ALL POSITIONS TO BE SHEARED.
 5. MAX VARIANCE OF .002[0.05].
 6. DIMENSION APPLIES TO GROUND PLANE & SIGNAL PINS.
 7. PARTS TO BE PACKAGED IN TRAYS AS STANDARD

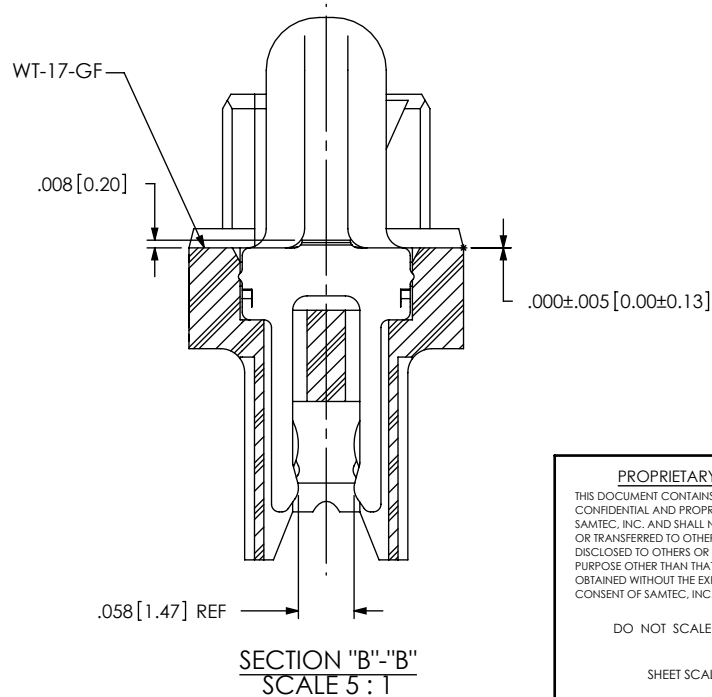
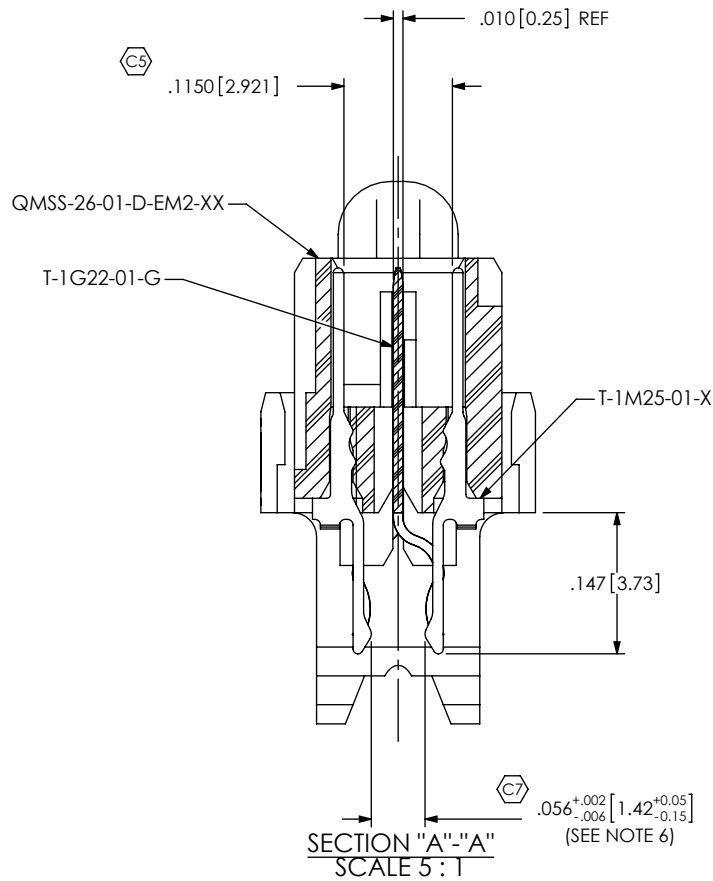
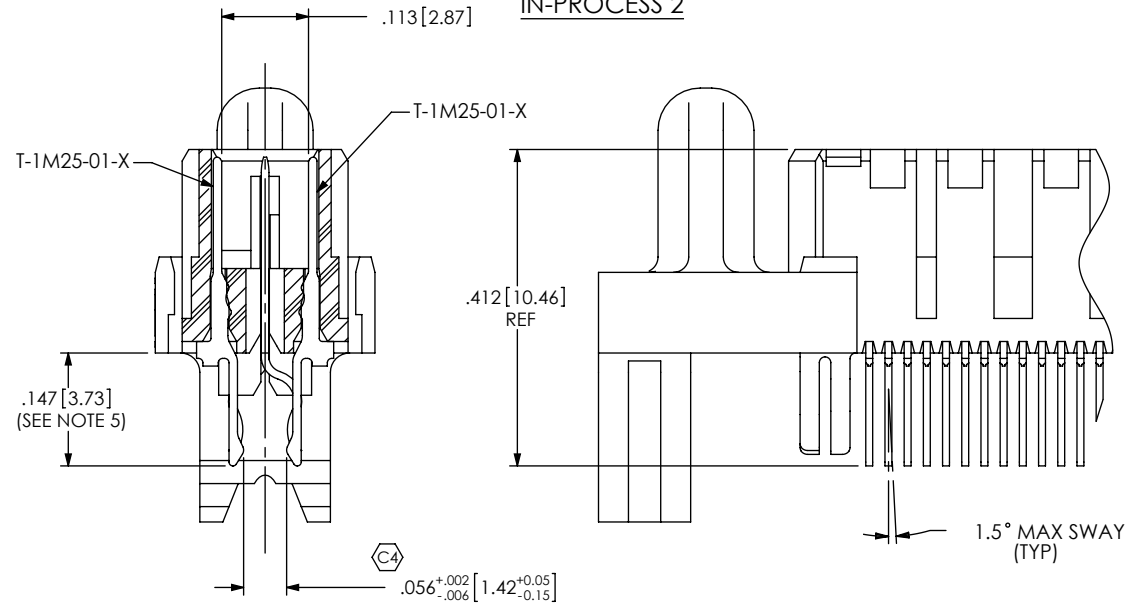
UNLESS OTHERWISE SPECIFIED, DIMENSIONS ARE IN INCHES. TOLERANCES ARE: DECIMALS ANGLES .XX: ±.01 [.3] 2 ° .XXX: ±.005 [.13] .XXXX: ±.0020 [.051]		PROPRIETARY NOTE THIS DOCUMENT CONTAINS INFORMATION CONFIDENTIAL AND PROPRIETARY TO SAMTEC, INC. AND SHALL NOT BE REPRODUCED OR TRANSFERRED TO OTHER DOCUMENTS OR DISCLOSED TO OTHERS OR USED FOR ANY PURPOSE OTHER THAN THAT WHICH IT WAS OBTAINED WITHOUT THE EXPRESSED WRITTEN CONSENT OF SAMTEC, INC.		<div></div> <div>520 PARK EAST BLVD, NEW ALBANY, IN 47150 PHONE: 812-944-6733 FAX: 812-948-5047 e-Mail: info@SAMTEC.com code: 55322</div>	
MATERIAL: DO NOT SCALE DRAWING		SHEET SCALE: 2:1		DESCRIPTION: .635mm DOUBLE ROW EDGE MOUNT TERMINAL STRIP	
INSULATOR: LCP, COLOR: BLACK TERMINAL & GROUND PLANE: PHOS BRONZE				DWG. NO. QMS-XXX-XX-XX-D-EM2-XXX-XX	
F:\DWG\MISC\MTGT\QMS-XXX-XX-XX-D-EM2-XXX-XX-MKTDRAW		BY: E.L.S.		6/18/2003	SHEET 1 OF 3

REVISION N

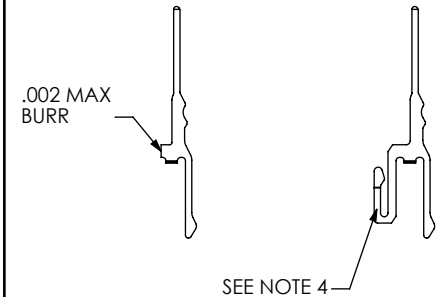
IN-PROCESS 1



IN-PROCESS 2



TERMINAL DETAILS



PROPRIETARY NOTE

THIS DOCUMENT CONTAINS INFORMATION
CONFIDENTIAL AND PROPRIETARY TO
SAMTEC, INC. AND SHALL NOT BE REPRODUCED
OR TRANSFERRED TO OTHER DOCUMENTS OR
DISCLOSED TO OTHERS OR USED FOR ANY
PURPOSE OTHER THAN THAT WHICH IT WAS
OBTAINED WITHOUT THE EXPRESSED WRITTEN
CONSENT OF SAMTEC, INC.

DO NOT SCALE DRAWING

SHEET SCALE: 2.5:1

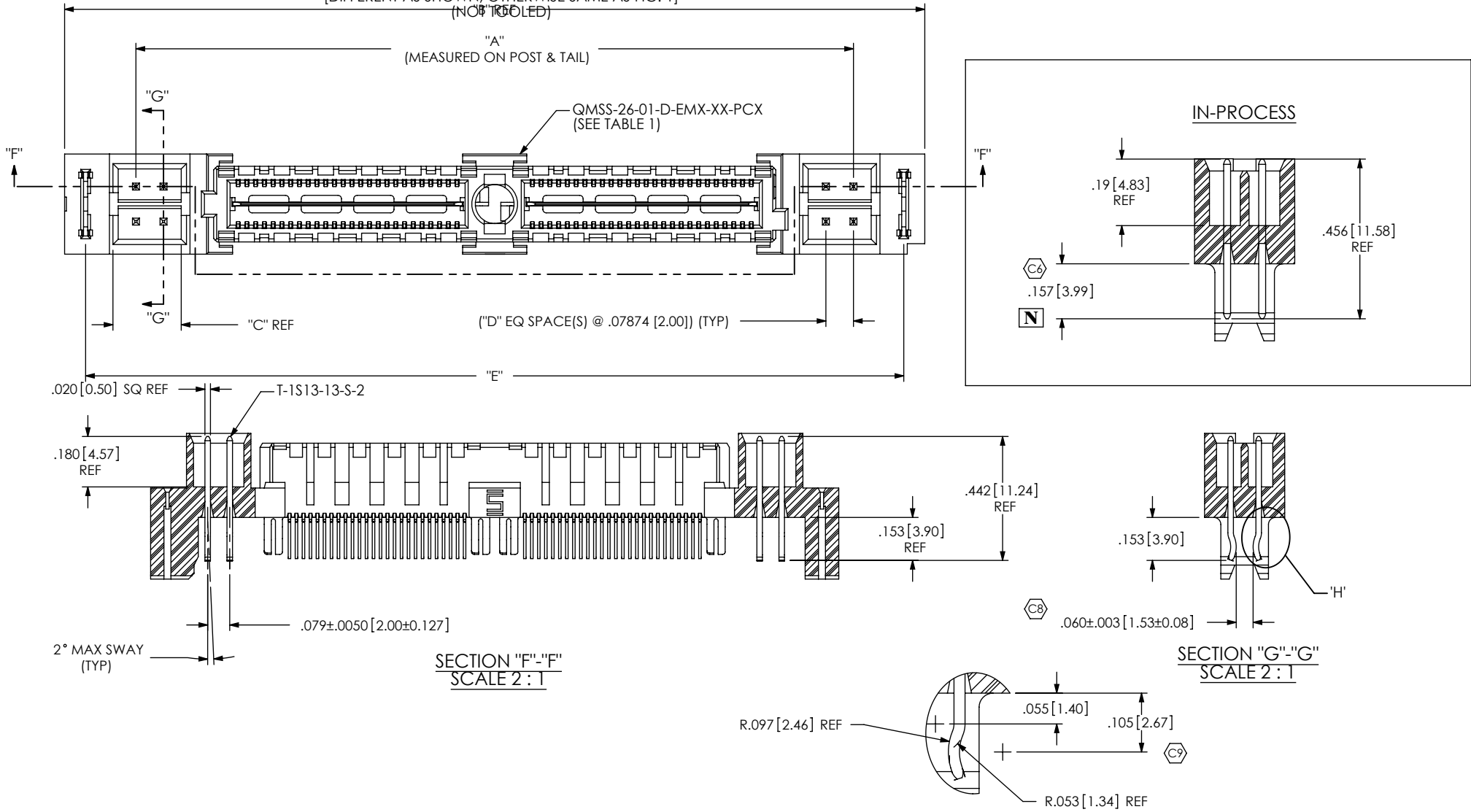
520 PARK EAST BLVD, NEW ALBANY, IN 47150
PHONE: 812-944-6733 FAX: 812-948-5047
e-Mail: info@SAMTEC.com code: 55322

DESCRIPTION:
.635mm DOUBLE ROW EDGE MOUNT TERMINAL STRIP

DWG. NO.
QMS-XXX-XX-XX-D-EM2-XXX-XX

BY: E.L.S. 6/18/2003 SHEET 2 OF 3

FIG. 2 -PCX OPTION
QMS-052-01-XX-D-EM2-PC4 SHOWN
[DIFFERENT AS SHOWN, OTHERWISE SAME AS FIG. 1]
(NOT TO SCALE)



SECTION "F"- "F"
SCALE 2 : 1

SECTION "G"- "G"
SCALE 2 : 1

DETAIL 'H'
SCALE 4 : 1

TABLE 1

--

<p>PROPRIETARY NOTE THIS DOCUMENT CONTAINS INFORMATION CONFIDENTIAL AND PROPRIETARY TO SAMTEC, INC. AND SHALL NOT BE REPRODUCED OR TRANSFERRED TO OTHER DOCUMENTS OR DISCLOSED TO OTHERS OR USED FOR ANY PURPOSE OTHER THAN THAT WHICH IT WAS OBTAINED WITHOUT THE EXPRESSED WRITTEN CONSENT OF SAMTEC, INC.</p> <p>DO NOT SCALE DRAWING</p> <p>SHEET SCALE: 1:0.4</p>	
<p>520 PARK EAST BLVD, NEW ALBANY, IN 47150 PHONE: 812-944-6733 FAX: 812-948-5047 e-Mail: info@SAMTEC.com code: 55322</p>	
<p>DESCRIPTION: .635mm DOUBLE ROW EDGE MOUNT TERMINAL STRIP</p>	
<p>DWG. NO. QMS-XXX-XX-XX-D-EM2-XXX-XX</p>	
BY: E.L.S.	6/18/2003
SHEET 3 OF 3	