

DO NOT
SCALE FROM
THIS PRINT

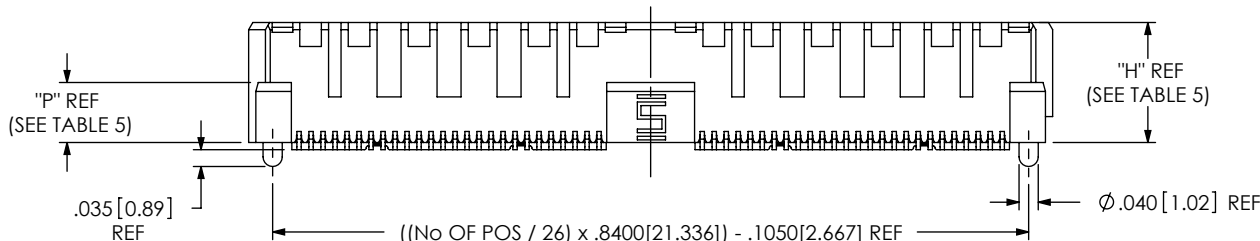
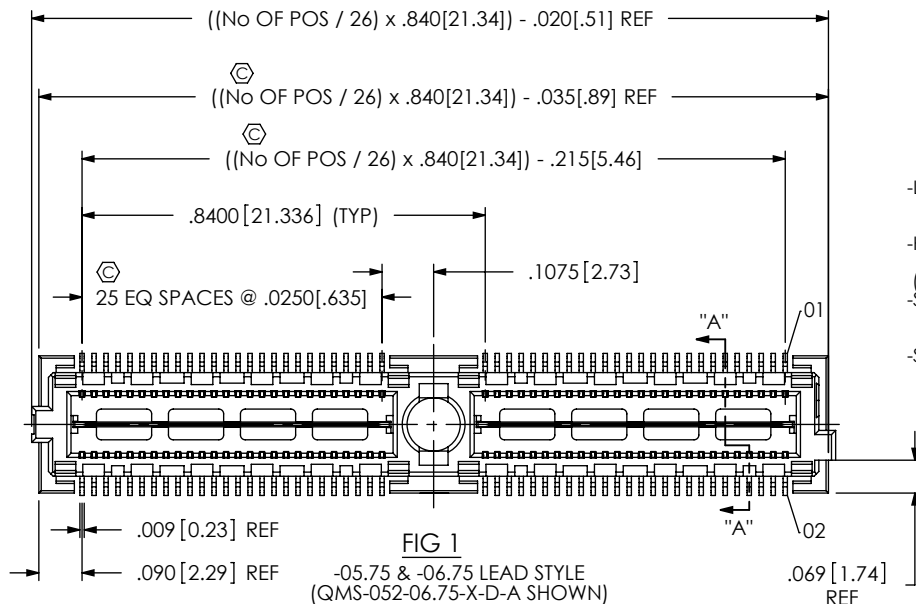
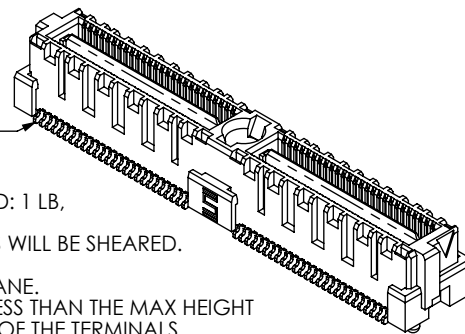


TABLE 5							
LEAD STYLE	"H"	"J"	"P"	QMS BODY	QMS STACKER BODY	TERMINAL	GROUND PLANE
-.05.75	.212 [5.38]	.2268 [5.761]	.085 [2.16]	QMS-26-05.75-D-XX-A	N/A	T-1M 19-05.75-XX	T-1G 19-05.75-L
-.06.75	.250 [6.35]	.2650 [6.731]	.125 [3.18]	QMS-26-06.75-D-XX-A	N/A	T-1M 19-06.75-XX	T-1G 19-06.75-L
-.09.75	.368 [9.35]	.3830 [9.728]	.085 [2.16]	QMS-26-05.75-D-XX	QTS H-26-01-D-XX-A	T-1M 19-09.75-XX	T-1G 19-09.75-L

TABLE 1		
No OF POSITIONS	No OF BANKS	COPLANARITY
-.026 AND -.054	1 AND 2	.004[.10]
-.078 THRU *-130	3 THRU 5	.006[.15]

SEE NOTE 4



- NOTES:
- ① REPRESENTS A CRITICAL DIMENSION.
 - BURR ALLOWANCE: .0015 MAX.
 - MINIMUM PUSHOUT FORCE: SIGNAL: .5 LB, GROUND: 1 LB, POWER: .5 LB, RF: .5 LB.
 - ALL TERMINALS ON THE -.05.75 & -.06.75 LEAD STYLES WILL BE SHEARED.
 - MAX VARIANCE OF .002.
 - DIMENSION APPLIES TO CONTACTS & GROUND PLANE.
 - GROUND PLANE PRESS HEIGHT MUST BE .003[.08] LESS THAN THE MAX HEIGHT OR .001[.03] GREATER THAN THE MINIMUM HEIGHT OF THE TERMINALS.
 - PARTS TO BE PACKAGED IN TRAYS.
 - LEADSTYLES -10 AND -11 MAY BE SUBSTITUTED IN PART CALLOUT FOR -.05.75 AND -.06.75 ACCORDINGLY FOR EXISTING CUSTOMERS ONLY.

QMS-XXX-XX.XX-XX-D-XX-XXX-XX

No OF POSITIONS
-.026, -.052, -.078,
-104, *-130
(PER ROW)

(SEE NOTE 9) LEAD STYLE

-.05.75 (SEE FIG 1)
-.06.75 (SEE FIG 1)
-.09.75 (SEE FIG 4, SHEET 3)

PLATING SPECIFICATION

-L: LIGHT GOLD
(USE T-1M19-XX.XX-L, SEE TABLE 5)
(AVAILABLE ON -.05.75 & -.06.75 LEAD STYLE ONLY)
-H: HEAVY GOLD
(USE T-1M19-XX.XX-H, SEE TABLE 5)
(AVAILABLE ON -.05.75 & -.06.75 LEAD STYLE ONLY)
-S: SELECTIVE GOLD
(USE T-1M19-XX.XX-S, SEE TABLE 5)
(AVAILABLE ON -.09.75 LEAD STYLE ONLY)
-SL: SELECTIVE LIGHT GOLD
(USE T-1M19-XX.XX-SL, SEE TABLE 5)
(AVAILABLE ON -.09.75 LEAD STYLE ONLY)

ROW SPECIFICATION

-D: DOUBLE

OPTION

-A: ALIGNMENT PIN
-GP: GUIDE POSTS
(SEE FIG 3, SHEET 2)
(AVAILABLE ON -.05.75 & -.06.75 LEAD STYLES ONLY)
-K: KAPTON PAD
(SEE FIG 2, SHEET 2)
(OPTIONS NOT AVAILABLE IN COMBINATION WITH -PXX OR -RFX)

PACKAGING OPTION
-TR: TAPE & REEL PACKAGING

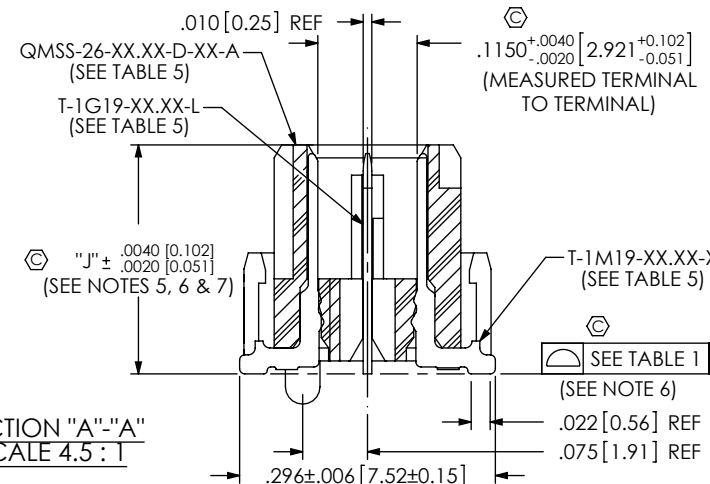
(-.026 THRU -.078 WITH NO OPTIONS)
(-.026 & -.052 WITH -GP, -PXX, -RF1, -RT1)
(-.026 WITH RF2)

END OPTION

-PC4: POWER COMBO 4 (.062" THICK BOARD)
(SEE FIG 5, SHEET 4)
-PC8: POWER COMBO 8 (.062" THICK BOARD)
(SEE FIG 5, SHEET 4)
-PT4: POWER COMBO 4 (.093" THICK BOARD)
(SEE FIG 5, SHEET 4)
-PT8: POWER COMBO 8 (.093" THICK BOARD)
(SEE FIG 5, SHEET 4)
-RF1: 1 RF POS PER END
(SEE FIG 6, SHEET 5)
-RF2: 2 RF POS PER END
(SEE FIG 7, SHEET 5)
-RT1: 1 RT POS PER END
(SEE FIG 8, SHEET 6)

(-PXX & -RFX NOT AVAILABLE IN COMBINATION WITH -A, -GP, OR -K)
(END OPTION APPLIES TO BOTH ENDS, COMBINATIONS ARE NOT AVAILABLE)
(-PXX & -RFX AVAILABLE IN POS
-.026, -.052, & -.078 ONLY)
(-RFX & -RT1 AVAILABLE ON -.05.75 LEAD STYLE ONLY)
(-RT1 AVAILABLE IN -.026, -.052, -.078, & -104 POS WITH -A OPTION ONLY)
(-PXX AVAILABLE ON -.05.75 & -.06.75 LEAD STYLES ONLY)

* = NOT TOOLED



UNLESS OTHERWISE SPECIFIED,
DIMENSIONS ARE IN INCHES.

TOLERANCES ARE:

DECIMALS ANGLES
.XX: $\pm .01[.3]$ 2°
.XXX: $\pm .005[.13]$
.XXXX: $\pm .0020[.051]$

PROPRIETARY NOTE

THIS DOCUMENT CONTAINS INFORMATION
CONFIDENTIAL AND PROPRIETARY TO
SAMTEC, INC. AND SHALL NOT BE REPRODUCED
OR TRANSFERRED TO OTHER DOCUMENTS OR
DISCLOSED TO OTHERS OR USED FOR ANY
PURPOSE OTHER THAN THAT WHICH IT WAS
OBTAINED WITHOUT THE EXPRESSED WRITTEN
CONSENT OF SAMTEC, INC.

MATERIAL:

DO NOT SCALE DRAWING

SHEET SCALE: 1:0.4

INSULATOR: LCP, COLOR: BLACK
TERMINAL & GROUND PLANE:
PHOS BRONZE

DESCRIPTION:

.635mm DOUBLE ROW TERMINAL STRIP

DWG. NO.

QMS-XXX-XX.XX-XX-D-XX-XXX-XX

BY: E.L.S.

10-12-2010

SHEET 1 OF 6

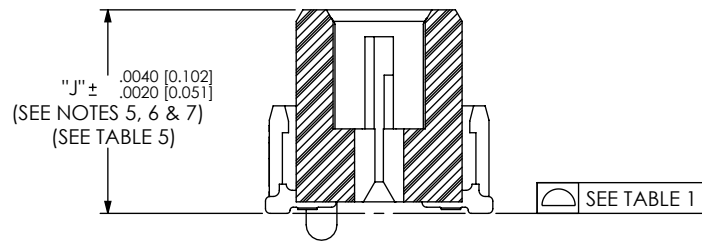
F:\DWG\MISC\WKTG\QMS-XXX-XX.XX-XX-D-XX-XXX-XX-MKT.SLDDRW

samtec

520 PARK EAST BLVD, NEW ALBANY, IN 47150
PHONE: 812-944-6733 FAX: 812-948-5047
e-Mail: info@SAMTEC.com code: 55322

REVISION Z

IN-PROCESS 1



TERMINAL DETAILS

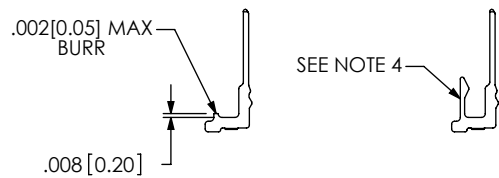


FIG 3

-GP: GUIDE POST OPTION
(QMS-052-06.75-X-D-A-GP SHOWN)
(AVAILABLE ON -.05.75 & -.06.75 LEAD STYLES ONLY)

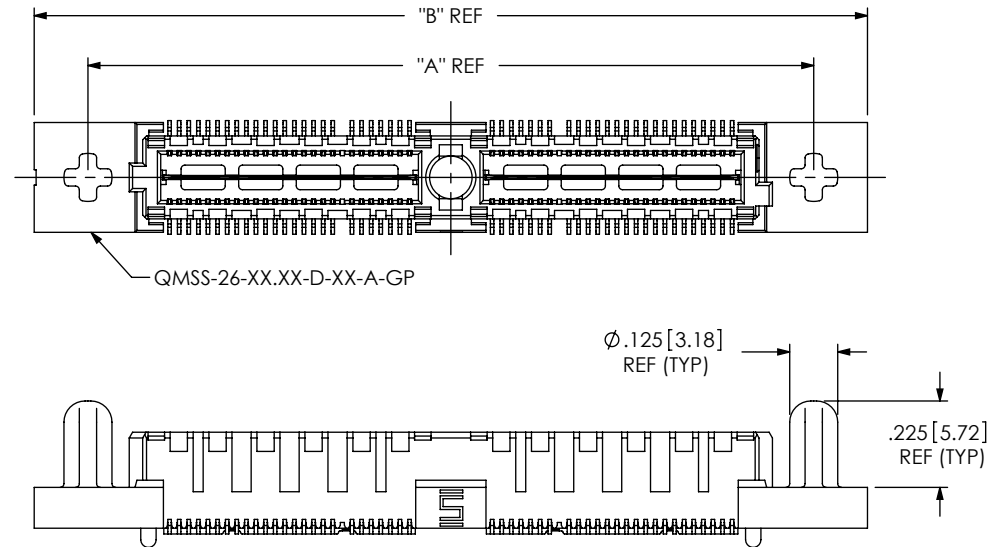


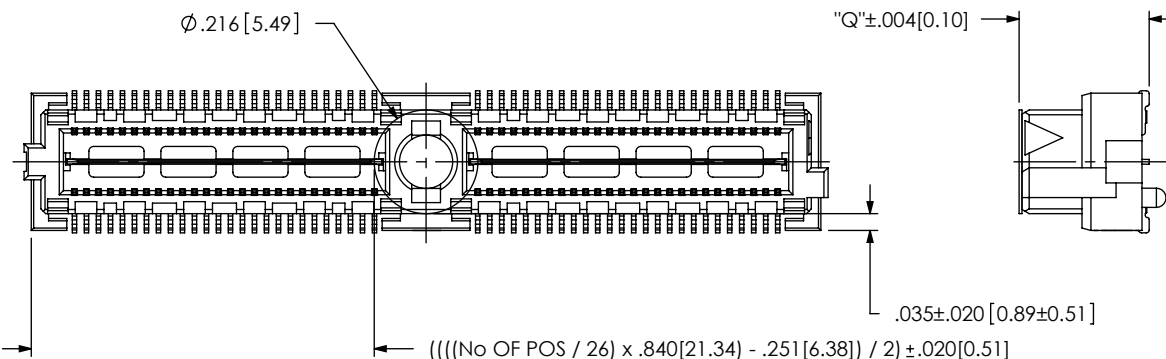
FIG 2

-K: KAPTON PAD OPTION (USE K-500-300)
(QMS-052-06.75-X-D-A-K SHOWN)

TABLE 9	
LEAD STYLE	"Q"
-.05.75	.233 [5.91]
-.06.75	.271 [6.88]
-.09.75	.389 [9.88]

TABLE 2		
ASSEMBLY	"A"	"B"
QMS-026-XX-X-D-A-GP	1.050[26.67]	1.330[33.78]
QMS-052-XX-X-D-A-GP	1.890[48.00]	2.170[55.12]
QMS-078-XX-X-D-A-GP	2.730[69.34]	3.010[76.45]
QMS-104-XX-X-D-A-GP	3.570[90.68]	3.850[97.79]
* QMS-130-XX-X-D-A-GP	4.410[112.01]	4.690[119.13]

*** NOT TOOLED**



PROPRIETARY NOTE

THIS DOCUMENT CONTAINS INFORMATION
CONFIDENTIAL AND PROPRIETARY TO
SAMTEC, INC. AND SHALL NOT BE REPRODUCED
OR TRANSFERRED TO OTHER DOCUMENTS OR
DISCLOSED TO OTHERS OR USED FOR ANY
PURPOSE OTHER THAN THAT WHICH IT WAS
OBTAINED WITHOUT THE EXPRESSED WRITTEN
CONSENT OF SAMTEC, INC.

DO NOT SCALE DRAWING

SHEET SCALE: 1:0.4

samtec

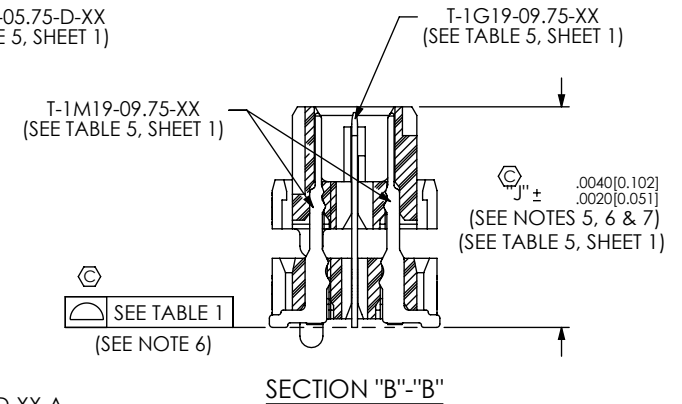
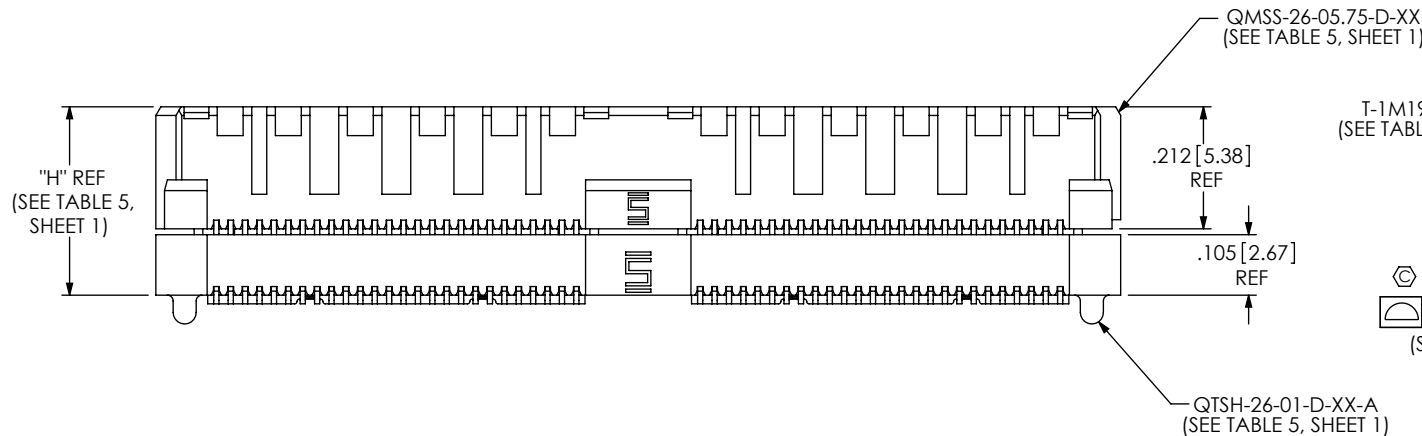
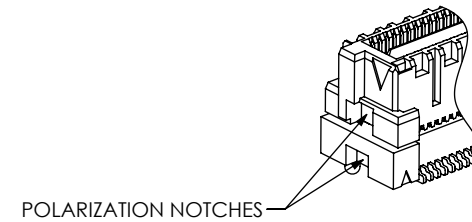
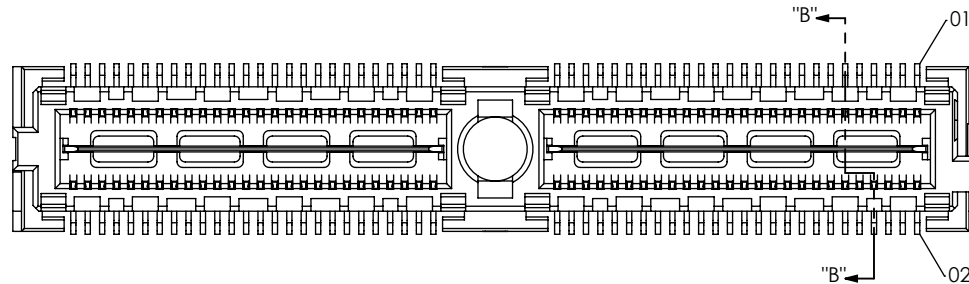
520 PARK EAST BLVD, NEW ALBANY, IN 47150
PHONE: 812-944-6733 FAX: 812-948-5047
e-Mail: info@SAMTEC.com code: 55322

DESCRIPTION:
.635mm DOUBLE ROW TERMINAL STRIP

DWG. NO.
QMS-XXX-XX.XX-D-XX-XXX-XX

BY: E.L.S. 10-12-2010 SHEET 2 OF 6

FIG 4
-09.75 LEAD STYLE
(QMS-052-09.75-X-D-A SHOWN)
(SAME AS FIG 1, EXCEPT AS SHOWN)



PROPRIETARY NOTE

THIS DOCUMENT CONTAINS INFORMATION
CONFIDENTIAL AND PROPRIETARY TO
SAMTEC, INC. AND SHALL NOT BE REPRODUCED
OR TRANSFERRED TO OTHER DOCUMENTS OR
DISCLOSED TO OTHERS OR USED FOR ANY
PURPOSE OTHER THAN THAT WHICH IT WAS
OBTAINED WITHOUT THE EXPRESSED WRITTEN
CONSENT OF SAMTEC, INC.

DO NOT SCALE DRAWING

SHEET SCALE: 3:1

samtec

520 PARK EAST BLVD, NEW ALBANY, IN 47150
PHONE: 812-944-6733 FAX: 812-948-5047
e-Mail: info@SAMTEC.com code: 55322

DESCRIPTION:

.635mm DOUBLE ROW TERMINAL STRIP

DWG. NO.

QMS-XXX-XX.XX-XX-D-XX-XXX-XX

BY: E.L.S.

10-12-2010

SHEET 3 OF 6

FIG 5 -PXX OPTION
POWER COMBO OPTIONS
QMS-052-06.75-X-D-PC4 SHOWN
(SAME AS FIG 1, UNLESS OTHERWISE STATED)
[NOT AVAILABLE WITH -A, -GP OR -K OPTION, AVAILABLE ON LEAD STYLES -05.75 & -06.75 ONLY]
(AVAILABLE ON -026, -052 & -078 POSITIONS ONLY)

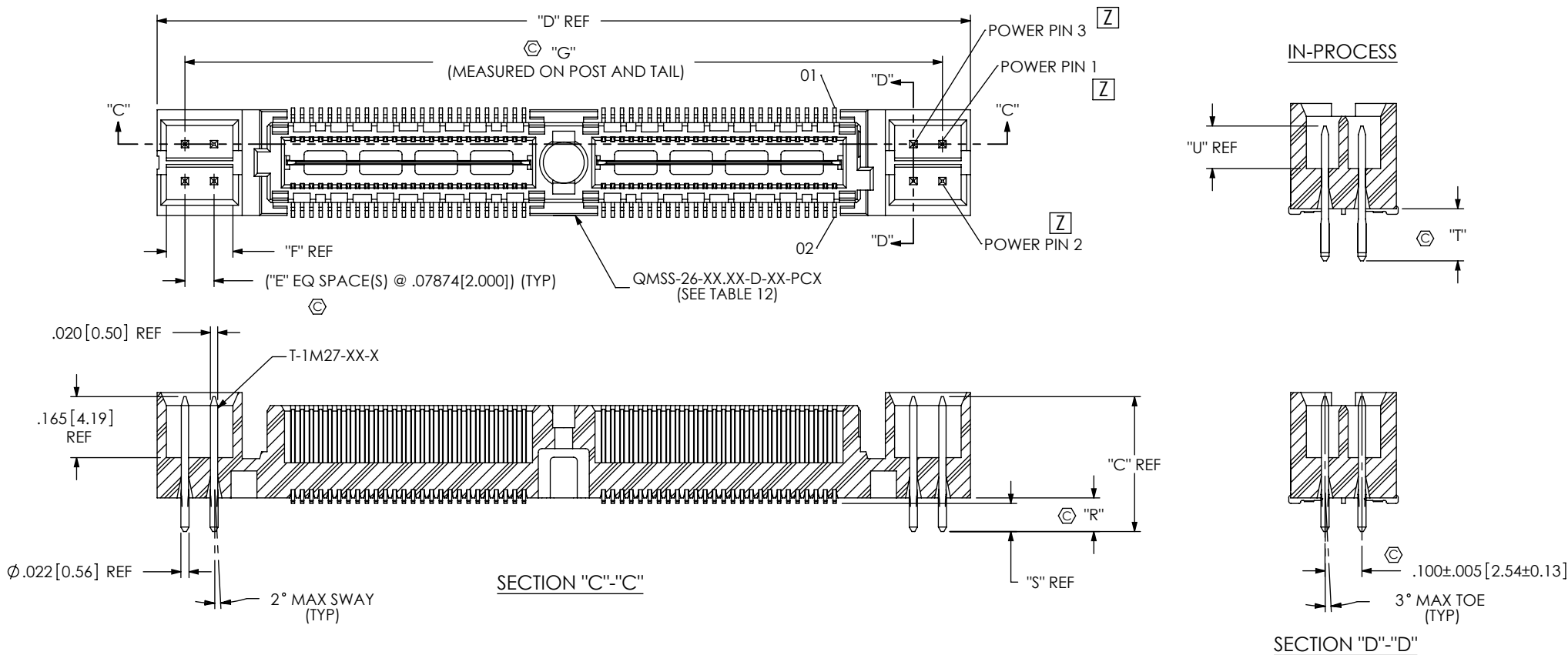


TABLE 10

ASSEMBLY	"D"	"E"	"F"	"G"
QMS-026-XX XX-X-D-X-PX4	1.360[34.54]	1	.180[4.57]	1.209[30.71]
QMS-026-XX XX-X-D-X-PX8	1.675[42.55]	3	.337[8.56]	1.524[38.71]
QMS-052-XX XX-X-D-X-PX4	2.200[55.88]	1	.180[4.57]	2.049[52.04]
QMS-052-XX XX-X-D-X-PX8	2.515[63.88]	3	.337[8.56]	2.364[60.05]
QMS-078-XX XX-X-D-X-PX4	3.040[77.22]	1	.180[4.57]	2.889[73.38]

TABLE 11

LEAD STYLE	POWER OPTION	TERMINAL	"C"	"R"	"S"	"T"	"U"
-06.75	PCX	T-1M27-01-S	.365[9.27]	.091[2.31]	.076[1.93]	.132[3.35]	.124[3.15]
-06.75	PTX	T-1M27-03-S	.400[10.16]	.126[3.20]	.111[2.82]	.132[3.35]	.159[4.04]
-05.75	PCX	T-1M27-02-S	.326[8.28]	.091[2.31]	.076[1.93]	.172[4.37]	.079[2.01]
-05.75	PTX	T-1M27-01-S	.365[9.27]	.126[3.20]	.111[2.82]	.172[4.37]	.118[3.00]

TABLE 12

LEAD STYLE	POWER OPTION	BODY
-06.75	PX4	QMSS-26-06.75-D-XX-PC4
-06.75	PX8	QMSS-26-06.75-D-XX-PC8
-05.75	PX4	QMSS-26-05.75-D-XX-PC4
-05.75	PX8	QMSS-26-05.75-D-XX-PC8

PROPRIETARY NOTE

THIS DOCUMENT CONTAINS INFORMATION CONFIDENTIAL AND PROPRIETARY TO SAMTEC, INC. AND SHALL NOT BE REPRODUCED OR TRANSFERRED TO OTHER DOCUMENTS OR DISCLOSED TO OTHERS OR USED FOR ANY PURPOSE OTHER THAN THAT WHICH IT WAS OBTAINED WITHOUT THE EXPRESSED WRITTEN CONSENT OF SAMTEC, INC.

DO NOT SCALE DRAWING

SHEET SCALE: 1:0.4

samtec

520 PARK EAST BLVD, NEW ALBANY, IN 47150
PHONE: 812-944-6733 FAX: 812-948-5047
e-Mail: info@SAMTEC.com code: 55322

DESCRIPTION:

.635mm DOUBLE ROW TERMINAL STRIP

DWG. NO.

QMS-XXX-XX.XX-XX-D-XX-XXX-XX

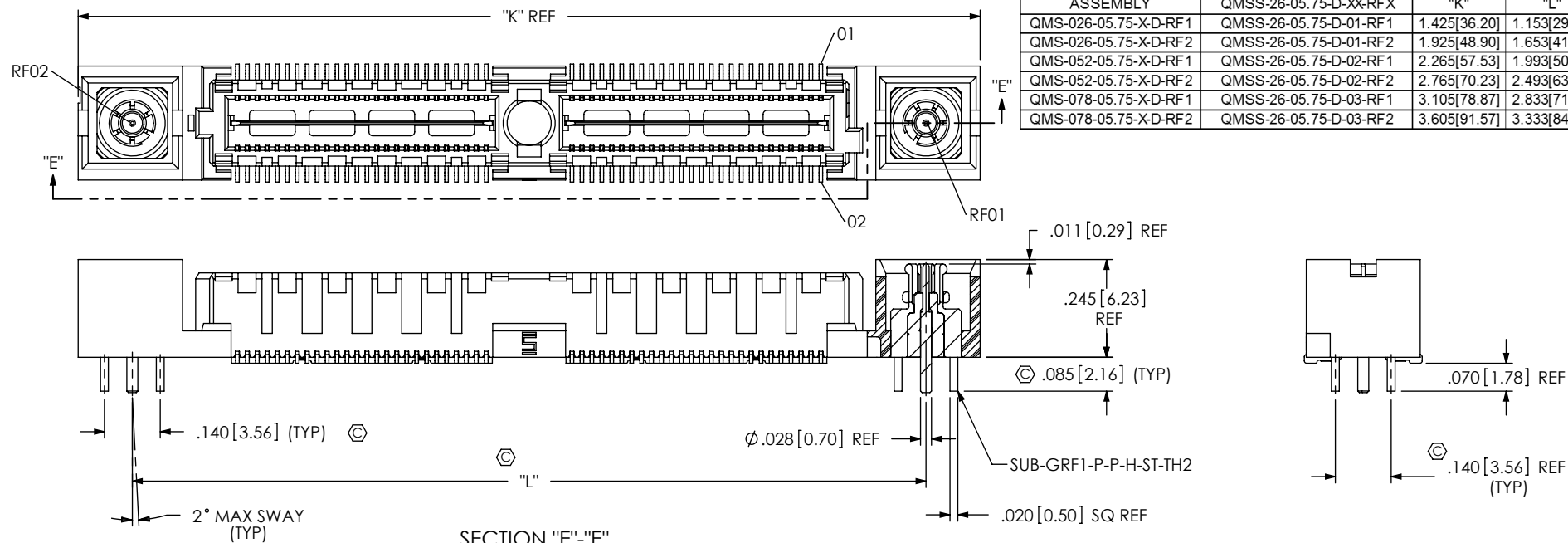
BY: E.L.S.

10-12-2010

SHEET 4 OF 6

FIG 6 -RF1 OPTION
 QMS-052-05.75-X-D-RF1 SHOWN
 (SAME AS FIG 1, UNLESS OTHERWISE STATED)
 [NOT AVAILABLE WITH -A OR -GP OPTION, AVAILABLE ON LEAD STYLE -05.75 ONLY]
 (AVAILABLE ON -026, -052 & -078 POSITIONS ONLY)

TABLE 7			
ASSEMBLY	QMS-26-05.75-D-XX-RFX	"K"	"L"
QMS-026-05.75-X-D-RF1	QMS-26-05.75-D-01-RF1	1.425[36.20]	1.153[29.29]
QMS-026-05.75-X-D-RF2	QMS-26-05.75-D-01-RF2	1.925[48.90]	1.653[41.99]
QMS-052-05.75-X-D-RF1	QMS-26-05.75-D-02-RF1	2.265[57.53]	1.993[50.62]
QMS-052-05.75-X-D-RF2	QMS-26-05.75-D-02-RF2	2.765[70.23]	2.493[63.32]
QMS-078-05.75-X-D-RF1	QMS-26-05.75-D-03-RF1	3.105[78.87]	2.833[71.96]
QMS-078-05.75-X-D-RF2	QMS-26-05.75-D-03-RF2	3.605[91.57]	3.333[84.66]



SECTION "E"-"E"

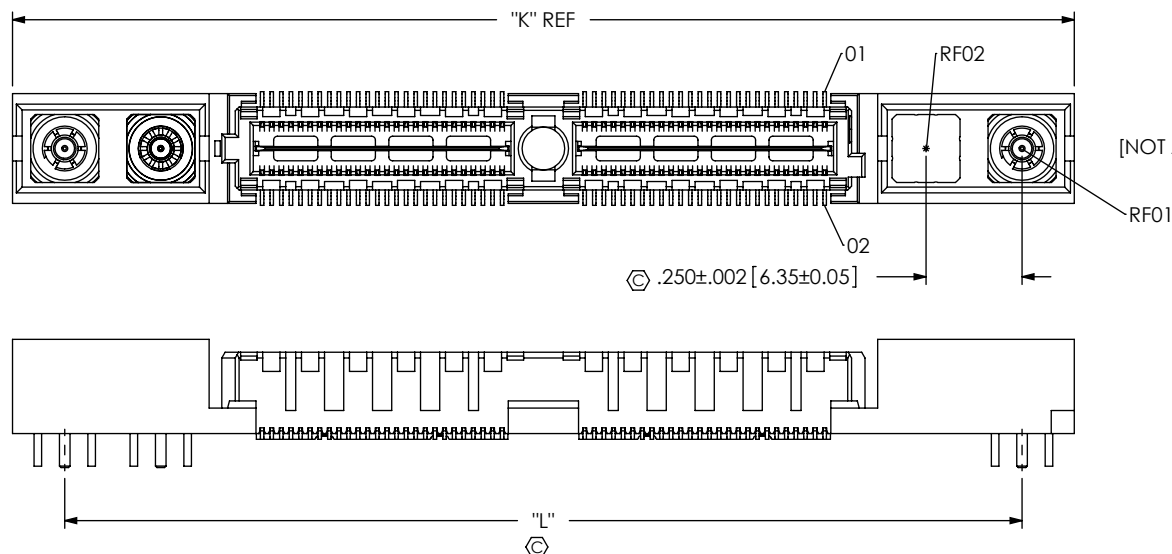


FIG 7 -RF2 OPTION
 QMS-052-05.75-X-D-RF2 SHOWN
 (SAME AS FIG 6, UNLESS OTHERWISE STATED)
 [NOT AVAILABLE WITH -A OR -GP OPTION, AVAILABLE ON LEAD STYLE -05.75 ONLY]
 (AVAILABLE ON -026, -052 & -078 POSITIONS ONLY)

PROPRIETARY NOTE

THIS DOCUMENT CONTAINS INFORMATION
 CONFIDENTIAL AND PROPRIETARY TO
 SAMTEC, INC. AND SHALL NOT BE REPRODUCED
 OR TRANSFERRED TO OTHER DOCUMENTS OR
 DISCLOSED TO OTHERS OR USED FOR ANY
 PURPOSE OTHER THAN THAT WHICH IT WAS
 OBTAINED WITHOUT THE EXPRESSED WRITTEN
 CONSENT OF SAMTEC, INC.

DO NOT SCALE DRAWING

SHEET SCALE: 1:0.4

samtec

520 PARK EAST BLVD, NEW ALBANY, IN 47150
 PHONE: 812-944-6733 FAX: 812-948-5047
 e-Mail: info@SAMTEC.com code: 55322

DESCRIPTION:

.635mm DOUBLE ROW TERMINAL STRIP

DWG. NO.

QMS-XXX-XX.XX-XX-D-XX-XXX-XX

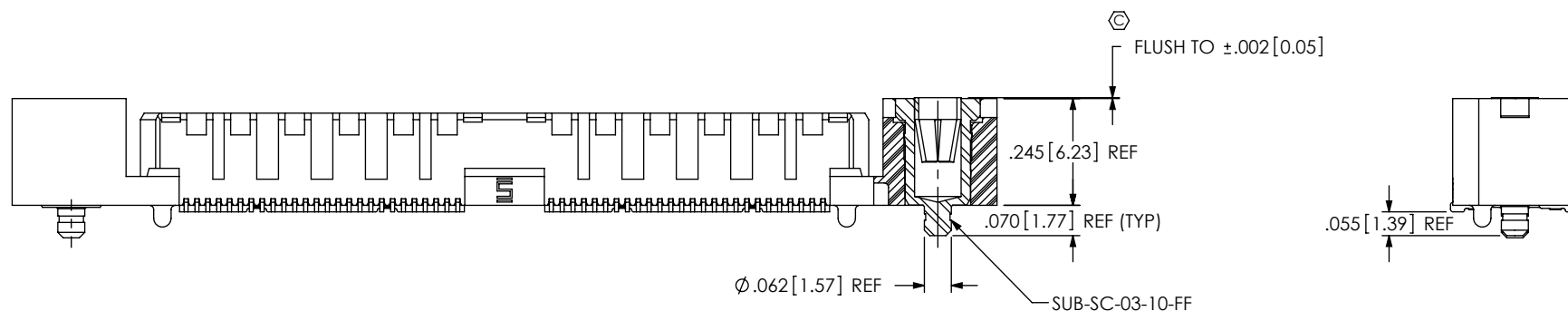
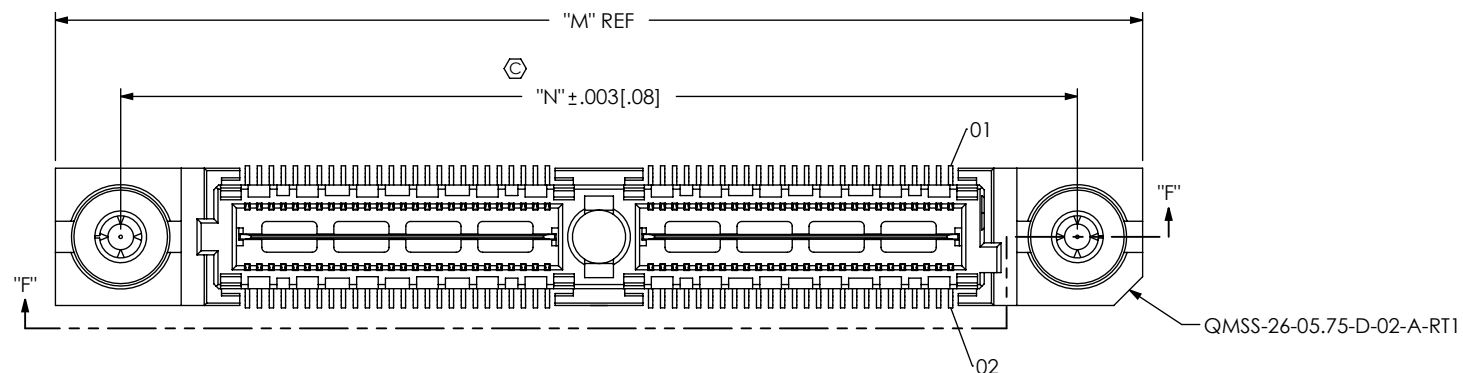
BY: E.L.S.

10-12-2010

SHEET 5 OF 6

FIG 8
-RT1 OPTION
QMS-052-05.75-X-D-A-RT1 SHOWN
(SAME AS FIG 1, UNLESS OTHERWISE STATED)
[NOT AVAILABLE WITH -GP, -PCX OR -RFX OPTION, AVAILABLE ON LEAD STYLE -05.75 ONLY]
(AVAILABLE ON -026, -052, -078, & -104 POSITIONS WITH -A OPTION ONLY)

TABLE 8			
ASSEMBLY	QMS-26-05.75-D-XX-A-RTX	"M"	"N"
QMS-026-05.75-X-D-A-RT1	QMSS-26-05.75-D-01-A-RT1	1.425[36.20]	1.153[29.29]
QMS-052-05.75-X-D-A-RT1	QMSS-26-05.75-D-02-A-RT1	2.265[57.53]	1.993[50.62]
QMS-078-05.75-X-D-A-RT1	QMSS-26-05.75-D-03-A-RT1	3.105[78.87]	2.833[71.96]
QMS-104-05.75-X-D-A-RT1	QMSS-26-05.75-D-04-A-RT1	3.945[100.20]	3.673[93.29]



SECTION "F"-F'

PROPRIETARY NOTE
THIS DOCUMENT CONTAINS INFORMATION
CONFIDENTIAL AND PROPRIETARY TO
SAMTEC, INC. AND SHALL NOT BE REPRODUCED
OR TRANSFERRED TO OTHER DOCUMENTS OR
DISCLOSED TO OTHERS OR USED FOR ANY
PURPOSE OTHER THAN THAT WHICH IT WAS
OBTAINED WITHOUT THE EXPRESSED WRITTEN
CONSENT OF SAMTEC, INC.

DO NOT SCALE DRAWING

SHEET SCALE: 1:0.4

samtec

520 PARK EAST BLVD, NEW ALBANY, IN 47150
PHONE: 812-944-6733 FAX: 812-948-5047
e-Mail: info@SAMTEC.com code: 55322

DESCRIPTION:
.635mm DOUBLE ROW TERMINAL STRIP

DWG. NO.
QMS-XXX-XX.XX-XX-D-XX-XXX-XX

BY: E.L.S. 10-12-2010 SHEET 6 OF 6