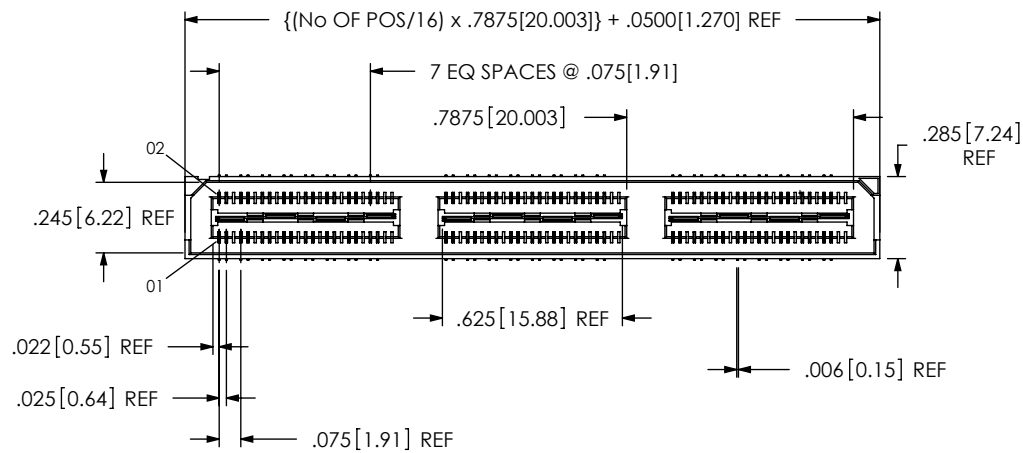


DO NOT  
SCALE FROM  
THIS PRINT

QSS-XXX-XX-X-D-DP-XXX



No OF POSITIONS  
-016, -032, -048,  
\*-064, \*-080  
(PER ROW)

LEAD STYLE —  
-01: .1430[3.632]

**PLATING SPECIFICATION**

- F: FLASH SELECTIVE GOLD  
WITH MATTE TIN TAILS  
(USE C-126-21-F & T-1G2-01-F)  
(SEE NOTES 7 & 9)
- L: LIGHT SELECTIVE GOLD  
WITH MATTE TIN TAILS  
(USE C-126-21-L & T-1G2-01-L)  
(SEE NOTE 9)
- H: HEAVY GOLD  
(USE C-126-21-H & T-1G2-01-G)  
(SEE NOTE 9)

— OPTION

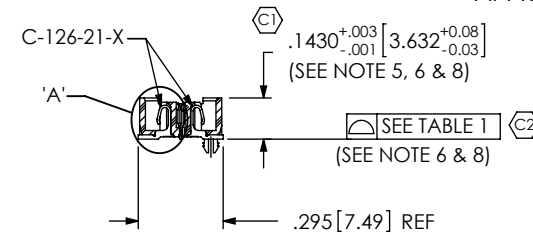
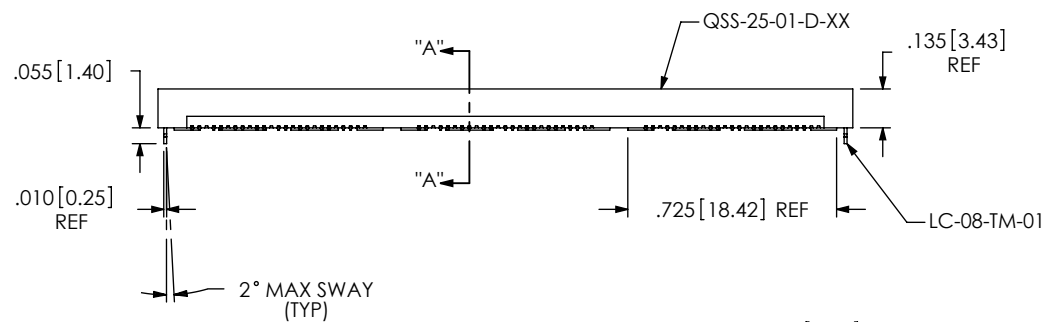
- A: ALIGNMENT PINS  
(SEE FIG. 2, SHEET 2)  
(USE QSS-25-01-D-XX-A)
- LC: LOCKING CLIPS  
(SEE FIG. 1) (USE LC-08-TM-01)
- K: POLYIMIDE FILM PAD  
(SEE FIG. 3, SHEET 2)  
(USE K-850-650)
- TR: TAPE & REEL (48 POS MAX)  
(32 POS MAX FOR -GP OPTION)
- GP: GUIDE POSTS  
(SEE FIG. 4, SHEET 2)  
(USE QSS-25-01-D-XX-X-GP)
- LS2: LOCKING SCREW  
(USE QSS-25-01-D-XX-LS2)  
(SEE FIG. 5, SHEET 3)  
(FOR MATING WITH  
QTS-...-RA..LS2)

## — DIFFERENTIAL PAIRS

— ROW SPECIFICATION  
-D: DOUBLE (USE QSS-25-01-D-XX)  
[SEE TABLE 2]

\* SEE NOTE 10

☒ = NOT ENGINEERING APPROVED



SECTION "A"-"A"

TABLE 2	
POSITIONS	USE BODY
-016	QSS-25-01-D-01
-032	QSS-25-01-D-02
-048	QSS-25-01-D-03
-064	QSS-25-01-D-04
-080	QSS-25-01-D-05

NOTES:


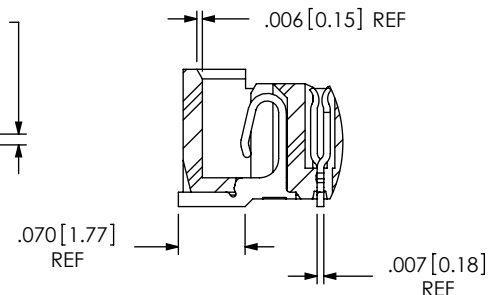
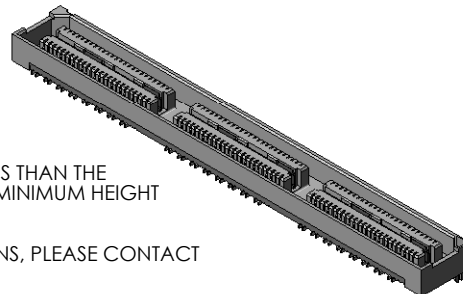
1. CONTACT RETENTION: 5 OZ MIN
  2. GROUND PLANE RETENTION: 8 OZ MIN
  3. Ⓢ REPRESENTS A CRITICAL DIMENSION.
  4. PARTS ARE MOLD TO POSITION.
  5. MAX VARIANCE OF .002[.05].
  6. DIMENSION APPLIES TO CONTACTS AND GROUND PLANES, INDEPENDENT OF EACH OTHER.
  7. -L PLATING CAN BE SUBSTITUTED FOR -F PLATING.
  8. GROUND PLANE PRESS HEIGHT MUST BE .003[.08] LESS THAN THE MAXIMUM HEIGHT OR .001[.03] GREATER THAN THE MINIMUM HEIGHT OF THE SIGNAL PIN.
  9. MAY SUBSTITUTE C-126-01-X FOR C-126-21-X.
  10. FOR NEW APPLICATIONS REQUIRING THESE POSITIONS, PLEASE CONTACT SAMTEC INTERCONNECT PROCESSING GROUP.
- 

FIG. 1

-LC: LOCKING CLIP OPTION SHOWN



DETAIL 'A'  
SCALE 5:1

TABLE 1	
No OF POSITIONS	COPLANARITY (INCLUDES GND PLANE)
-016 THRU -032	.004[.10]
-048 THRU -080	.006[.15]

UNLESS OTHERWISE SPECIFIED,  
DIMENSIONS ARE IN INCHES.

TOLERANCES ARE:

DECIMALS

.XX:  $\pm .01$  [.3]

.XXX: $\pm .005[.13]$
.XXX: $\pm .0020[.0$

PROPRIETARY NOTE

THIS DOCUMENT CONTAINS INFORMATION  
CONFIDENTIAL AND PROPRIETARY TO  
SAMTEC, INC. AND SHALL NOT BE REPRODUCED  
OR TRANSFERRED TO OTHER DOCUMENTS OR  
DISCLOSED TO OTHERS OR USED FOR ANY  
PURPOSE OTHER THAN THAT WHICH IT WAS  
OBTAINED WITHOUT THE EXPRESSED WRITTEN  
CONSENT OF SAMTEC, INC.

**MATERIAL:**

DO NOT SCALE DRAWING

SHEET SCALE: 1.5:1

INSULATOR: LCP, COLOR: BLACK  
CONTACT: PHOS BRONZE  
GROUND PLANE: PHOS BRONZE

DESCRIPTION:	
--------------	--

.635mm DIFFERENTIAL PAIRS HS SOCKET ASSEMBLY

DWG. NO.

QSS-XXX-XX-X-D-DP-XXX

BY: KEVIN B

07/10/2000	SHEET 1 OF 3
------------	--------------

**samtec**

520 PARK EAST BLVD, NEW ALBANY, IN 47150  
PHONE: 812-944-6733 FAX: 812-948-5047  
e-Mail: [info@SAMTEC.com](mailto:info@SAMTEC.com) code: 55322

FIG. 2  
-A: ALIGNMENT PIN OPTION SHOWN

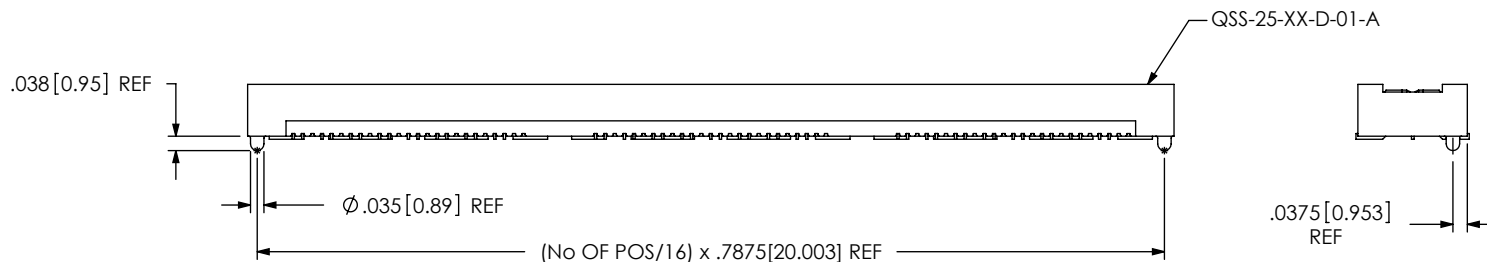
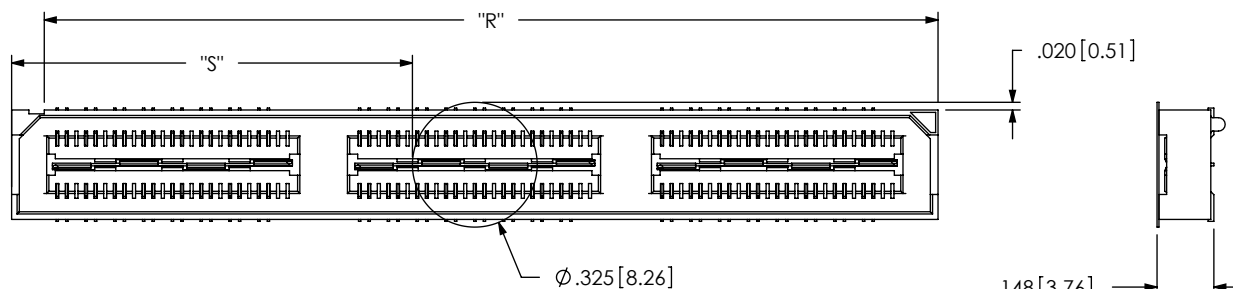


FIG. 3  
-K: POLYIMIDE FILM PAD OPTION



NOTE: "R" = ((No OF POS/16) x .7875[20.003]) + .050[1.27] REF  
"S" = (("R" - .325[8.26]) / 2) ±.020[.51]

FIG. 4  
-GP: GUIDE POST OPTION  
(32 POS MAX FOR TAPE & REEL OFFERING)

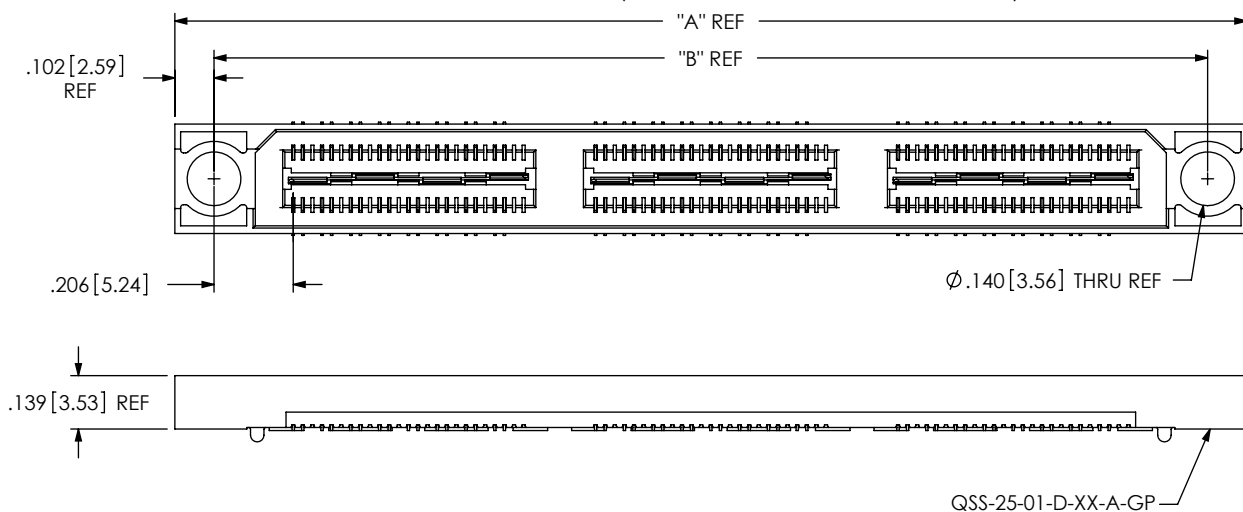


TABLE 3		
POSITIONS	"A" REF	"B" REF
-016	1.2165[30.899]	1.0125[25.718]
-032	2.0040[50.902]	1.8000[45.720]
-048	2.7915[70.904]	2.5875[65.723]
-064	3.5790[90.907]	3.3750[85.725]
-080	4.3665[110.909]	4.1625[105.728]

PROPRIETARY NOTE

THIS DOCUMENT CONTAINS INFORMATION  
CONFIDENTIAL AND PROPRIETARY TO  
SAMTEC, INC. AND SHALL NOT BE REPRODUCED  
OR TRANSFERRED TO OTHER DOCUMENTS OR  
DISCLOSED TO OTHERS OR USED FOR ANY  
PURPOSE OTHER THAN THAT WHICH IT WAS  
OBTAINED WITHOUT THE EXPRESSED WRITTEN  
CONSENT OF SAMTEC, INC.

DO NOT SCALE DRAWING

SHEET SCALE: 2:1

**samtec**

520 PARK EAST BLVD, NEW ALBANY, IN 47150  
PHONE: 812-944-6733 FAX: 812-948-5047  
e-Mail: info@SAMTEC.com code: 55322

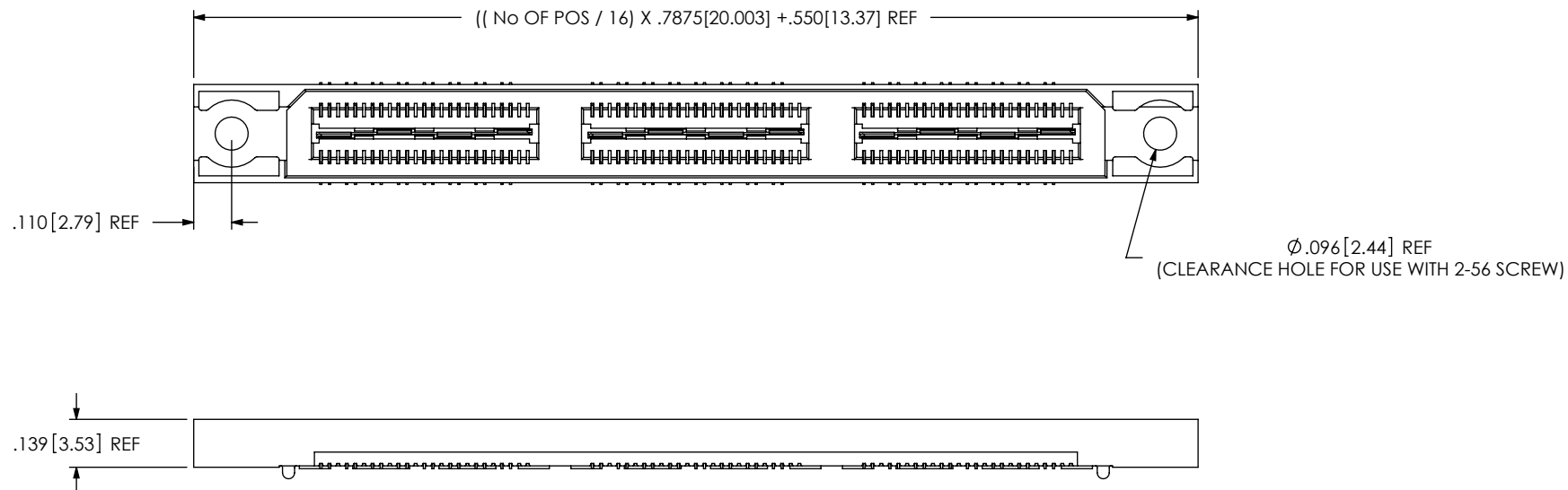
DESCRIPTION:  
.635mm DIFFERENTIAL PAIRS HS SOCKET ASSEMBLY

DWG. NO.  
**QSS-XXX-XX-X-D-DP-XXX**

BY: KEVIN B 07/10/2000 SHEET 2 OF 3

FIG. 5

-LS2: LOCKING SCREW OPTION  
[DIFFERENT AS SHOWN, OTHERWISE SAME AS FIG. 1]



PROPRIETARY NOTE

THIS DOCUMENT CONTAINS INFORMATION  
CONFIDENTIAL AND PROPRIETARY TO  
SAMTEC, INC. AND SHALL NOT BE REPRODUCED  
OR TRANSFERRED TO OTHER DOCUMENTS OR  
DISCLOSED TO OTHERS OR USED FOR ANY  
PURPOSE OTHER THAN THAT WHICH IT WAS  
OBTAINED WITHOUT THE EXPRESSED WRITTEN  
CONSENT OF SAMTEC, INC.

DO NOT SCALE DRAWING

SHEET SCALE: 2:1

**samtec**

520 PARK EAST BLVD, NEW ALBANY, IN 47150  
PHONE: 812-944-6733 FAX: 812-948-5047  
e-Mail: info@SAMTEC.com code: 55322

DESCRIPTION:  
.635mm DIFFERENTIAL PAIRS HS SOCKET ASSEMBLY

DWG. NO.  
**QSS-XXX-XX-X-D-DP-XXX**

BY: KEVIN B 07/10/2000 SHEET 3 OF 3