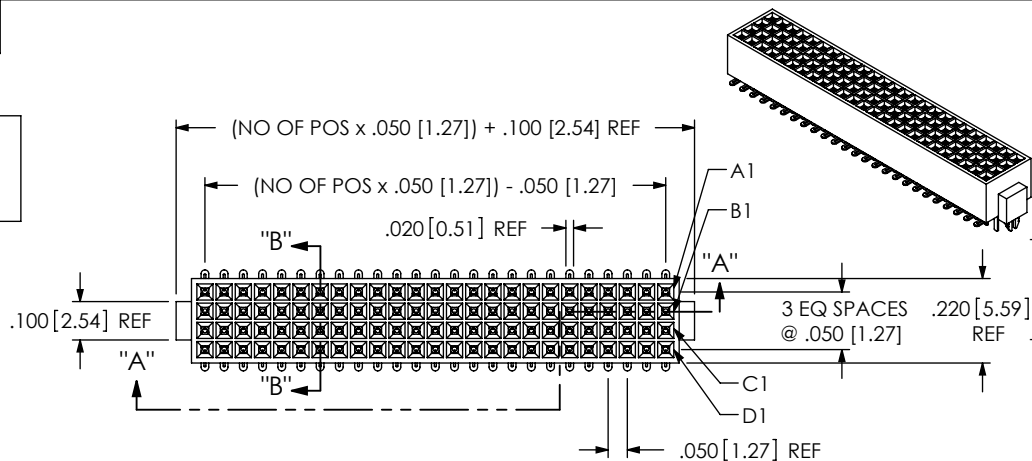


DO NOT  
SCALE FROM  
THIS PRINT



FOLC-1XX-MX-XX-Q-X

No OF POSITIONS  
-05 THRU -50

LEAD STYLE

OPTION

-P: PICK & PLACE PAD  
(USE PPP-18, SEE FIG 3)  
-TR: TAPE & REEL  
-LC: LOCKING CLIP (SEE NOTE 3)  
(USE (2) LC-09-TM, SEE FIG 2)

BODY SPECIFICATION

-Q: FOUR ROW  
(USE FOLC-XX-Q)

PLATING SPECIFICATION

(VALUES GIVEN ARE IN MICRO-INCHES)  
-S: SELECTIVE, 30 Au / 50 Ni MIN  
ON CONTACT, MATTE TIN TAIL.  
-SM: SELECTIVE, 30 Au / 50 Ni MIN  
ON CONTACT, MATTE TIN TAIL.  
-L: LIGHT SELECTIVE, 10 Au / 50 Ni MIN  
ON CONTACT, MATTE TIN TAIL.

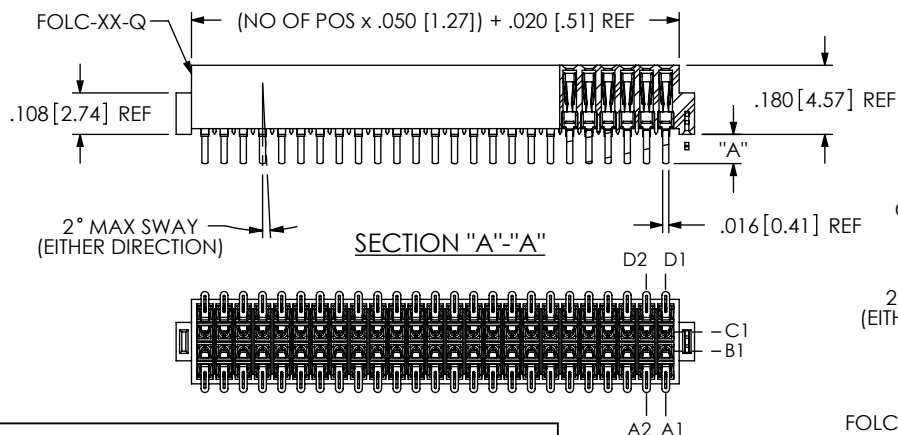


FIG 1

FOLC-1XX-M1-XX-Q SHOWN

NOTES:

1. Ⓢ REPRESENTS A CRITICAL DIMENSION.
2. MINIMUM PUSHOUT FORCE: .5 LBS.
3. DUE TO THE HIGH AMOUNT OF INSERTION FORCE NEEDED, THE -LC OPTION IS NOT COMPATIBLE WITH AUTO PLACEMENT. SAMTEC RECOMMENDS MANUAL PLACEMENT FOR ALL ASSEMBLIES WITH THE -LC OPTION.

"A"	
-M1	.075 [1.91]
-M2	.120 [3.05]

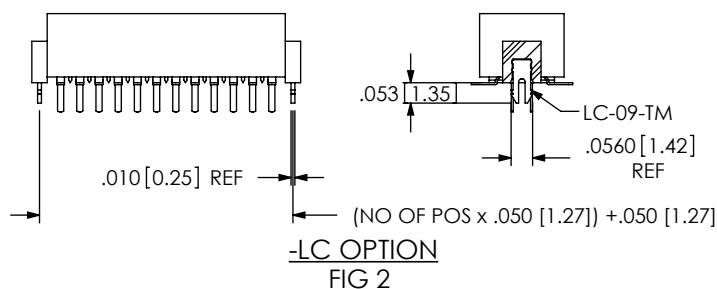


FIG 2

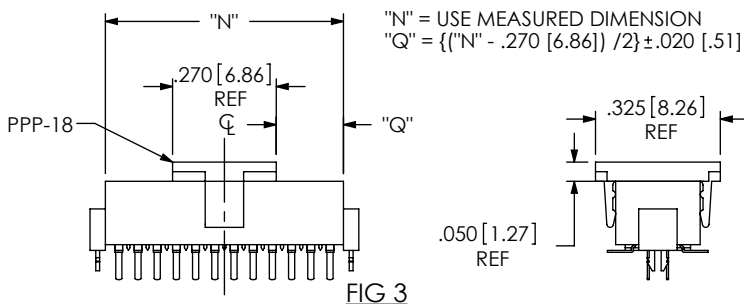
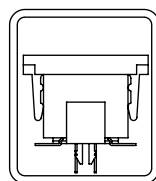


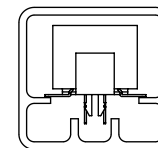
FIG 3

-P: PICK AND PLACE PAD

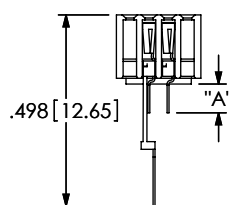
### PACKAGING TUBE VIEW



NOTE:  
-P OPTION VIEW  
TO BE PACKAGED IN PT-1-24-01-127 (TUBES)  
AND (2) TP-03 (PLUG) PER TUBE



NOTE:  
PARTS WITHOUT -P OPTION TO BE PACKAGED  
IN PT-1-24-05-38 (TUBES) AND (2) TP-03 (PLUGS) PER TUBE  
-M2: PLACE SURFACE MOUNT LEADS ABOVE THE HORIZONTAL RIBS.  
-M1: PLACE SURFACE MOUNT LEADS BELOW THE HORIZONTAL RIBS.



IN-PROCESS

UNLESS OTHERWISE SPECIFIED,  
DIMENSIONS ARE IN INCHES.  
TOLERANCES ARE:  
DECIMALS ANGLES  
.XX: ±.01 [.3] 5°  
.XXX: ±.005 [.13]  
.XXXX: ±.0020 [.051]

### PROPRIETARY NOTE

THIS DOCUMENT CONTAINS INFORMATION  
CONFIDENTIAL AND PROPRIETARY TO  
SAMTEC, INC. AND SHALL NOT BE REPRODUCED  
OR TRANSFERRED TO OTHER DOCUMENTS OR  
DISCLOSED TO OTHERS OR USED FOR ANY  
PURPOSE OTHER THAN THAT WHICH IT WAS  
OBTAINED WITHOUT THE EXPRESSED WRITTEN  
CONSENT OF SAMTEC, INC.

MATERIAL: DO NOT SCALE DRAWING

INSULATOR: LCP, UL 94 VO  
COLOR: BLACK  
CONTACT: BeCu

SHEET SCALE: 2:1

DESCRIPTION:  
.050 X .050 CENTERLINE 4 ROW MIXED TECH. SOCKET STRIP

DWG. NO. FOLC-1XX-MX-XX-Q-X

BY: TIM PLUMMER 03-29-96 SHEET 1 OF 1

**samtec**

520 PARK EAST BLVD, NEW ALBANY, IN 47150  
PHONE: 812-944-6733 FAX: 812-948-5047  
e-Mail: info@SAMTEC.com code 55322