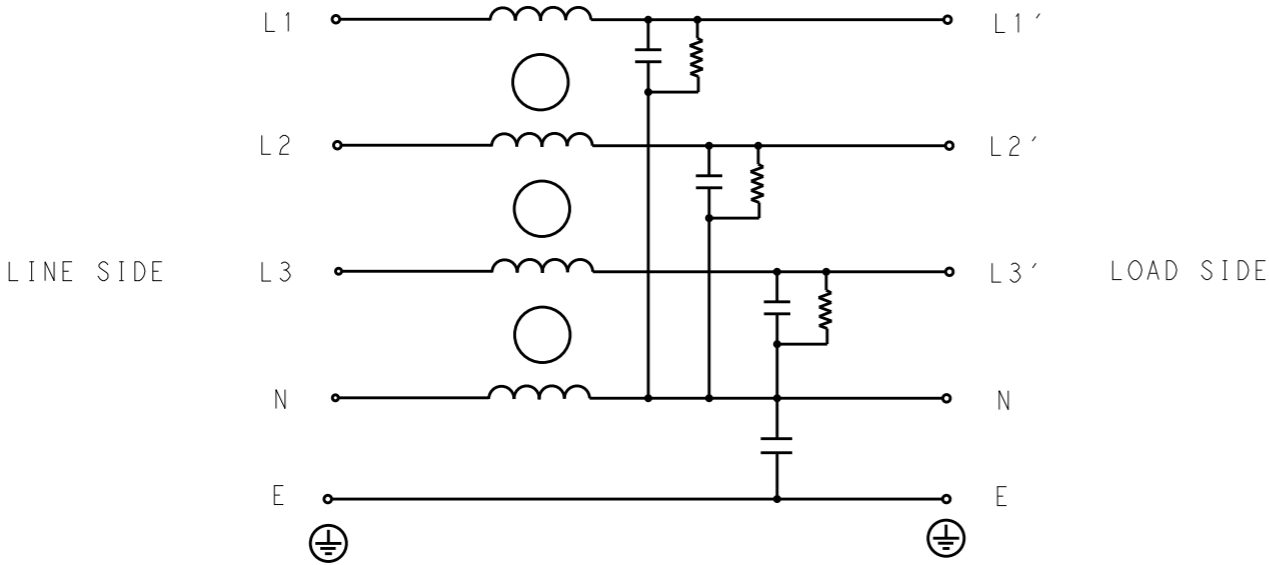


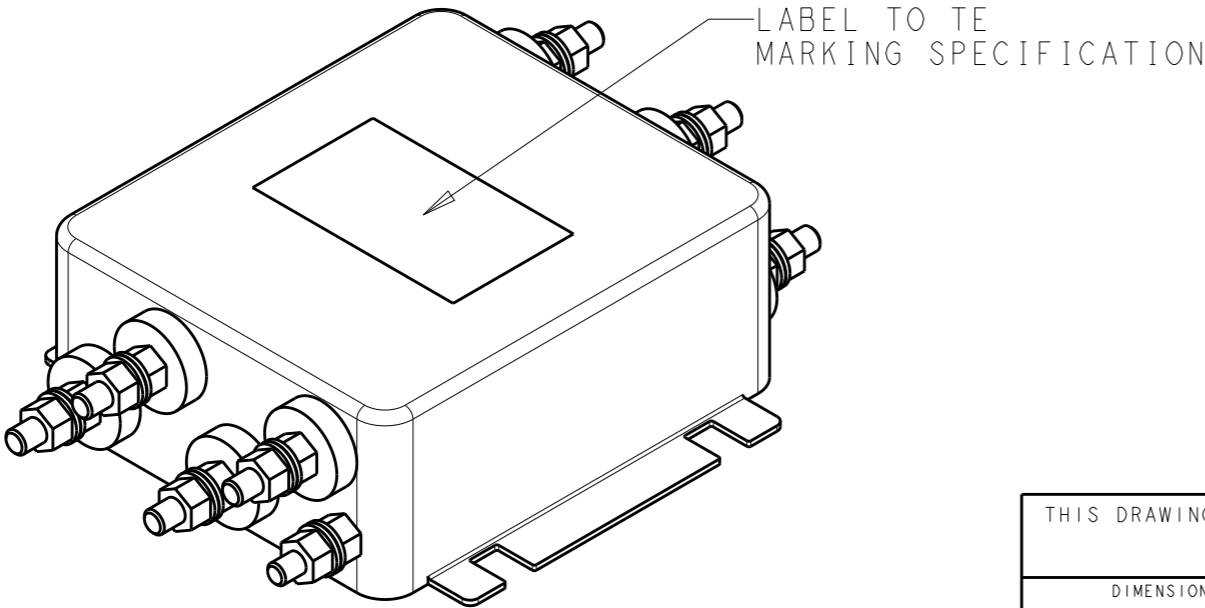
P	LTR	DESCRIPTION	DATE	DWN	APVD
	B	INITIAL RELEASE	07JUL2020	SB	LI



SCHEMATIC

TYPICAL INSERTION LOSS  
COMMON MODE 50/50Ω; DIFFERENTIAL MODE 50/50Ω

MHz	0.01	0.05	0.15	0.5	1	3	5	10	30
CM	4	4	9	21	28	42	58	39	20
DM	17	18	22	39	46	29	26	20	16



SAFETY ORGANIZATIONS  
THIS FILTER WILL BE FORMALLY RECOGNIZED, CERTIFIED OR APPROVED BY THE LISTED AGENCY. THEREFORE, ALL TEST/REQUIREMENTS SPECIFIED IN THE LATEST REVISION OF THE FOLLOWING AGENCY STANDARDS WILL BE MET:

UL RECOGNIZED\* 30A 440V 50Hz/60Hz 40°C  
CSA CERTIFIED\*\* 30A 440V 50Hz/60Hz 40°C  
\*31 JULY 2020 ; \*\*31 AUGUST 2020

OPERATING SPECIFICATION  
LINE CURRENT/VOLTAGE: 30A, 440VAC  
LINE FREQUENCY: 50/60Hz

MAXIMUM LEAKAGE CURRENT: 5mA @ 230VAC, 50Hz

OPERATING AMBIENT TEMPERATURE RANGE @ RATED CURRENT: -25°C TO +40°C

IN AN AMBIENT, T<sub>a</sub>, HIGHER THAN 40°C, THE MAXIMUM OPERATING CURRENT, I<sub>o</sub>, IS AS FOLLOWS:

$$I_o = I_r \sqrt{\frac{85 - T_a}{45}}$$

RELIABILITY SPECIFICATIONS  
STORAGE TEMPERATURE: -40°C TO +85°C  
HUMIDITY: 21 DAYS @ 40°C AND 95% RH


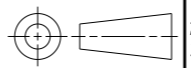
TEST SPECIFICATIONS  
INDUCTANCE, NOMINAL: 0.3mH

CAPACITANCE @ 1kHz  
NEUTRAL TO GROUND, NOMINAL: 22nF  
LINE TO NEUTRAL, NOMINAL: 470nF

DISCHARGE RESISTOR  
L/G I.R. 2MΩ 1W  
L/L I.R. 2MΩ 1W  
L/N I.R. 1MΩ 1W  
N/G I.R. 680KΩ 1W  
IR (NO DISCHARGE RESISTOR) 20°C, 50% RH AND 100VDC, MIN: 6MΩ

RECOMMENDED RECEIVING INSPECITON HIPOT  
LINE TO GROUND FOR 1 MINUTE: 2632VDC  
LINE TO LINE FOR 1 MINUTE: 1892VDC  
LINE TO NEUTRAL FOR 1 MINUTE: 1093VDC

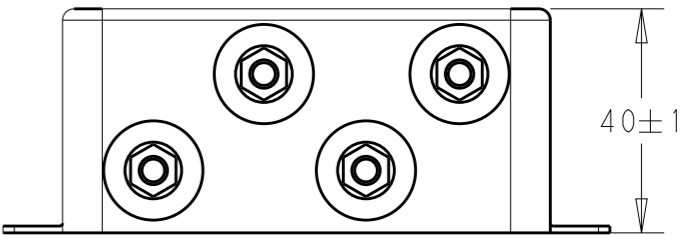
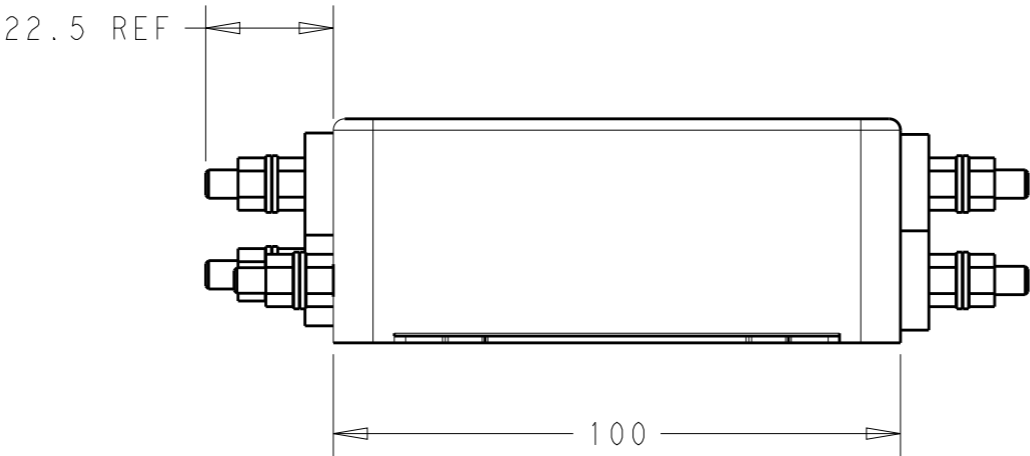
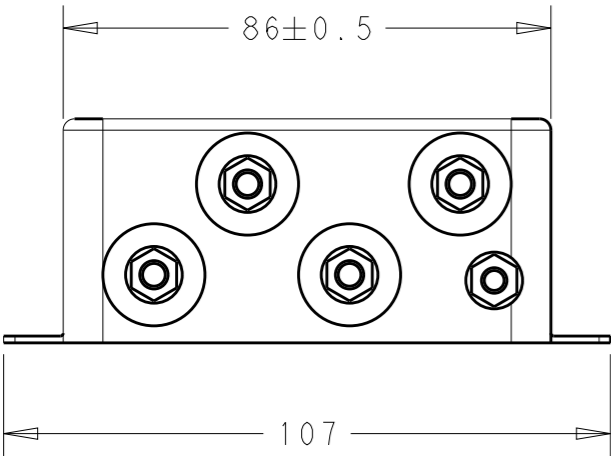
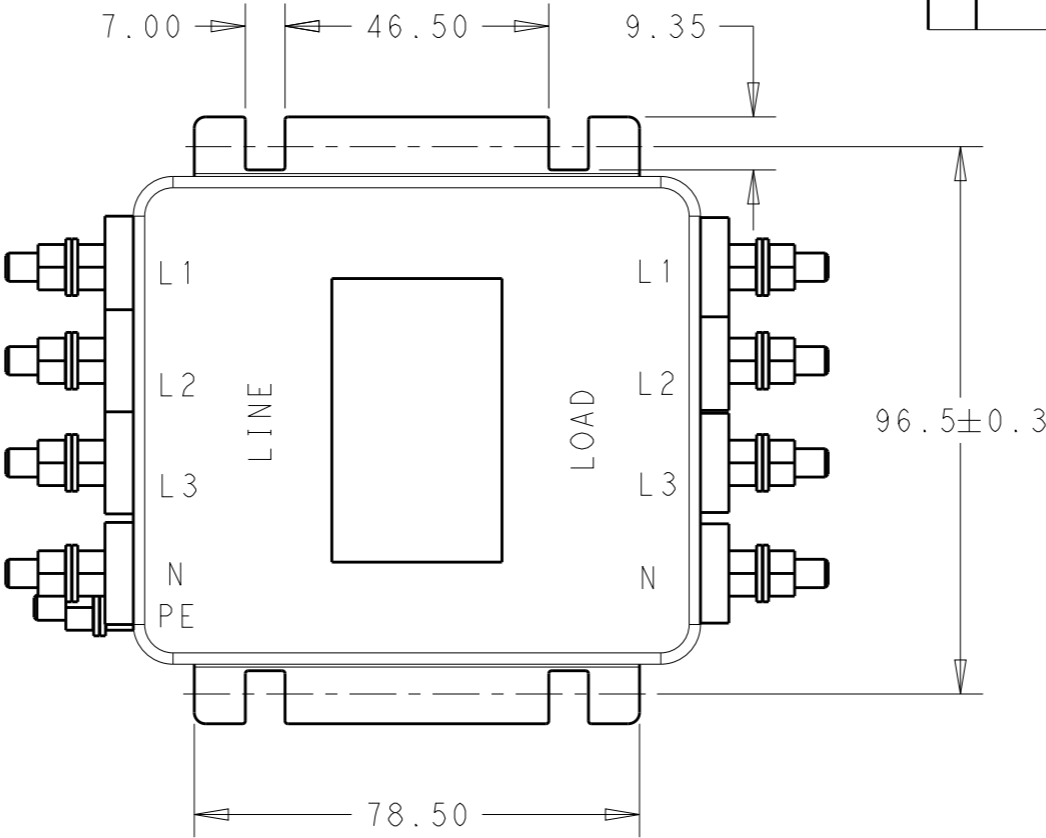
FILTER APPROVAL  
THE BEST WAY TO SELECT AND QUALIFY A FILTER IS FOR YOUR ENGINEERING TO TEST THE UNIT IN YOUR EQUIPMENT.


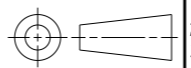
THIS DRAWING IS A CONTROLLED DOCUMENT.		DWN SHRICARANA B 20FEB2020	 TE Connectivity		
DIMENSIONS: mm		CHK LEO IRUDHAYARAJ 20FEB2020			
		APVD LEO IRUDHAYARAJ 20FEB2020			
TOLERANCES UNLESS OTHERWISE SPECIFIED:		PRODUCT SPEC			
		APPLICATION SPEC	NAME POWER LINE FILTER 30KESS6AFPW		
MATERIAL		WEIGHT	SIZE A3	CAGE CODE 00779	DRAWING NO C-1-1609966-7
FINISH		CUSTOMER DRAWING	SCALE 3:4	SHEET 1 OF 2	REV B

NOTE 1 GROUND CONNECTION:  
DO NOT LOOSEN INNER GROUND NUTS.  
TORQUE OUTER TERMINAL /GROUND NUTS: 2Nm

NOTE 2 INPUT OUTPUT CONNECTION TERMINAL  
AWG SIZE: XXX  
THREADED BOLT SIZE FOR TERMINAL: M5  
THREADED BOLT SIZE FOR GROUND: M5

P	LTR	DESCRIPTION	DATE	DWN	APVD
		SEE SHEET 1			



THIS DRAWING IS A CONTROLLED DOCUMENT.		DWN SHRICHARANA B 20FEB2020	 TE Connectivity		
DIMENSIONS: mm		CHK LEO IRUDHAYARAJ 20FEB2020			
TOLERANCES UNLESS OTHERWISE SPECIFIED:		APVD LEO IRUDHAYARAJ 20FEB2020	NAME POWER LINE FILTER 30KESS6AFPW		
		PRODUCT SPEC	SIZE A300779		
0 PLC ±0.5 1 PLC ±0.5 2 PLC ±0.40 3 PLC ±0.130 4 PLC ±0.0500 ANGLES ±0.5		APPLICATION SPEC	CAGE CODE C-1-1609966-7		
MATERIAL -		WEIGHT -	RESTRICTED TO -		
FINISH -		CUSTOMER DRAWING	SCALE 3:4		
			SHEET 2 OF 2		
			REV B		