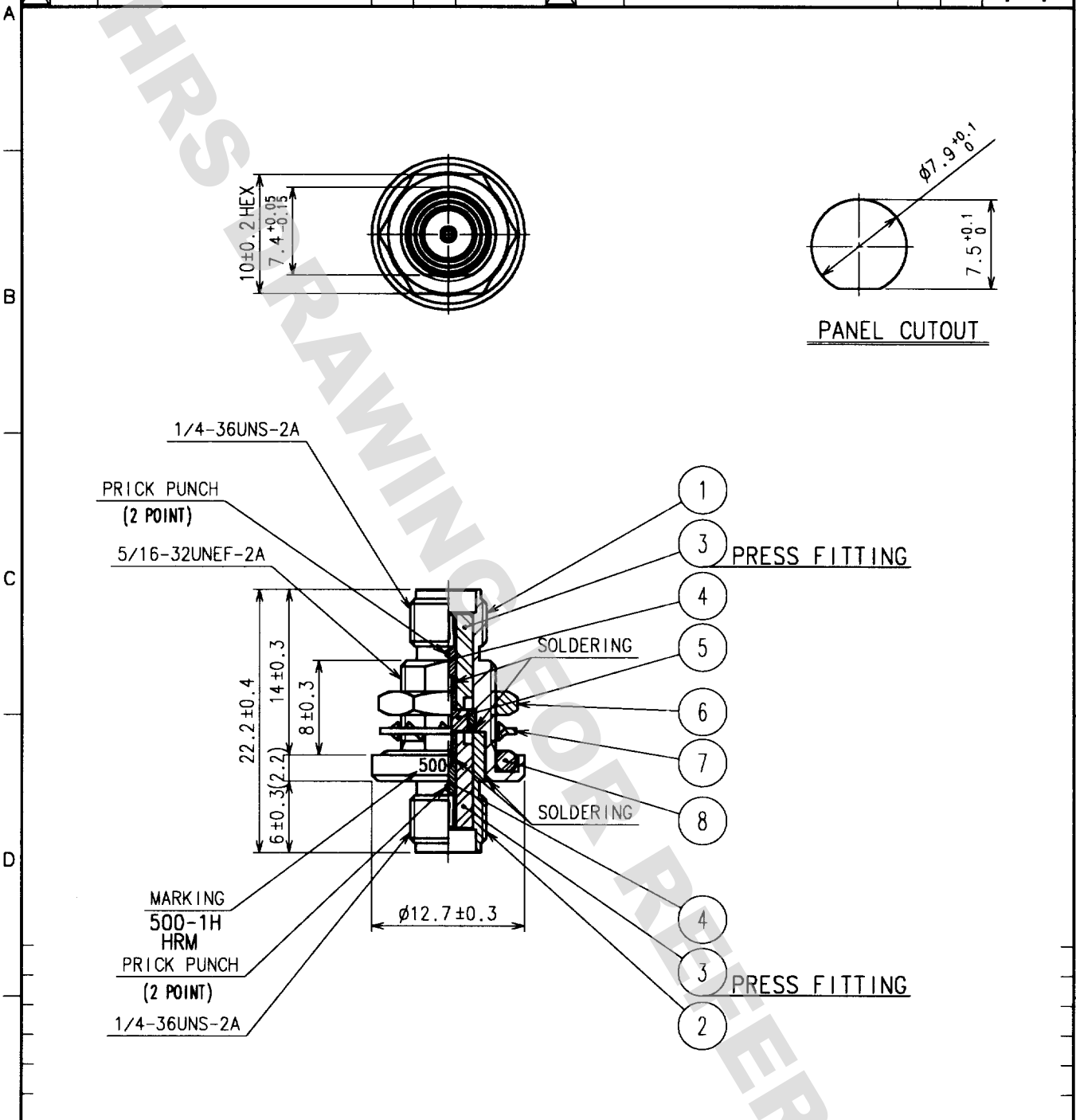


1		2			3			4		
COUNT	DESCRIPTION OF REVISIONS	BY	CHKD	DATE	COUNT	DESCRIPTION OF REVISIONS	BY	CHKD	DATE	
△					△					
△					△					
△					△					



4	BERYLLIUM COPPER	GOLD PLATING	8	SILICONE RUBBER	(RED)
3	PTFE		7	PHOSPHOR BRONZE	GOLD PLATING
2	STAINLESS STEEL	GOLD PLATING	6	BRASS	GOLD PLATING
1	STAINLESS STEEL	GOLD PLATING	5	HERMETIC SEAL	
NO.	MATERIAL	FINISH, REMARKS	NO.	MATERIAL	FINISH, REMARKS

CODE NO. (OLD) CL		DRAWN <i>Y. Sasaki</i> 01-03-01	DESIGNED <i>N. Ninomiya</i> 01-03-01	CHECKED <i>K. Shimizu</i> 01-03-01	APPROVED <i>J. Mitani</i> 01-03-01	RELEASED
DRAWING NO. EDC4-007149-09		PART NO. HRM-500-1H(09)				
SCALE 2 : 1		CODE NO. CL323-0113-5-09				1 1
UNITS mm		HRS HIROSE ELECTRIC CO., LTD.				

TO
RF

DRAWING FOR REFERENCE: This is subject to change without notice
08/11/2012

Mouser Electronics

Authorized Distributor

Click to View Pricing, Inventory, Delivery & Lifecycle Information:

[Hirose Electric:](#)

[HRM-500-1H\(09\)](#)