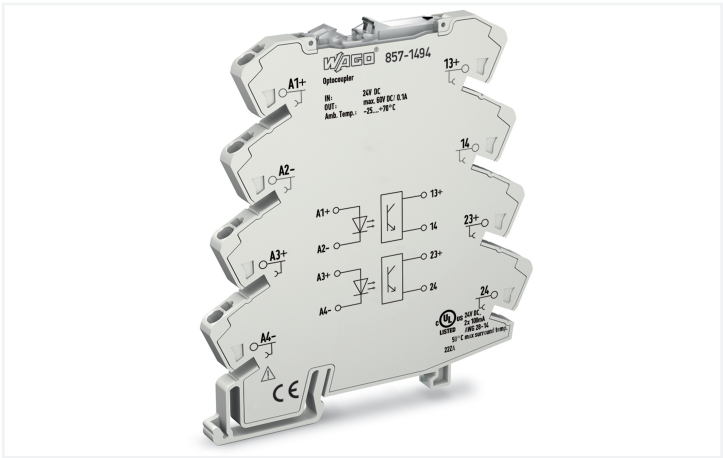


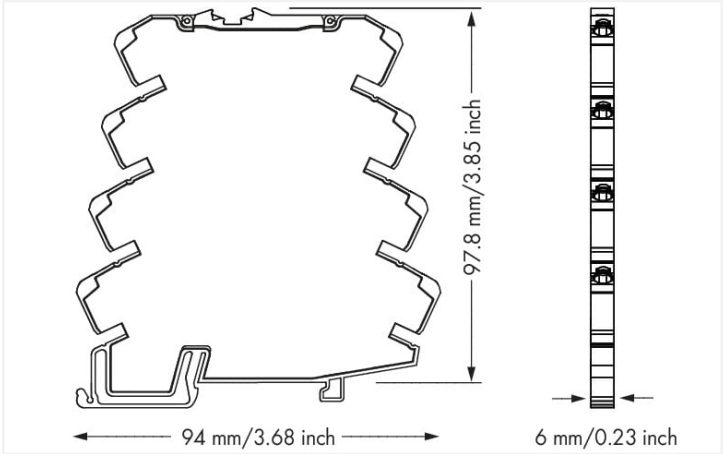
Data Sheet | Item Number: 857-1494

Optocoupler module; 2-port; Nominal input voltage: 24 VDC; Output voltage range: 9 ... 60 VDC; Limiting continuous current: 0.1 A; 2-wire connection; Yellow status indicator; Module width: 6 mm

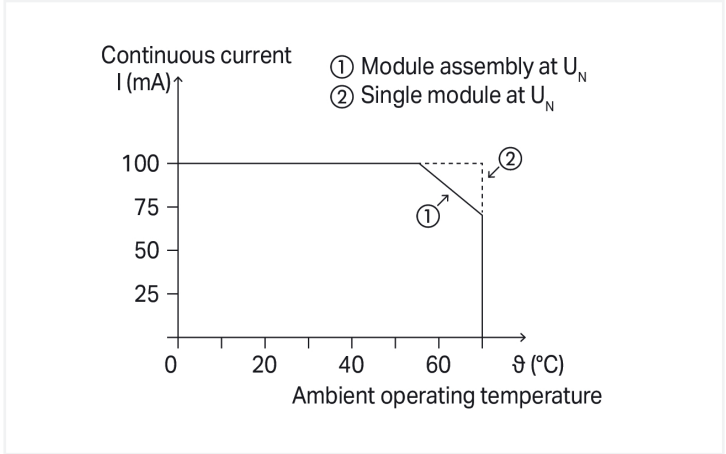
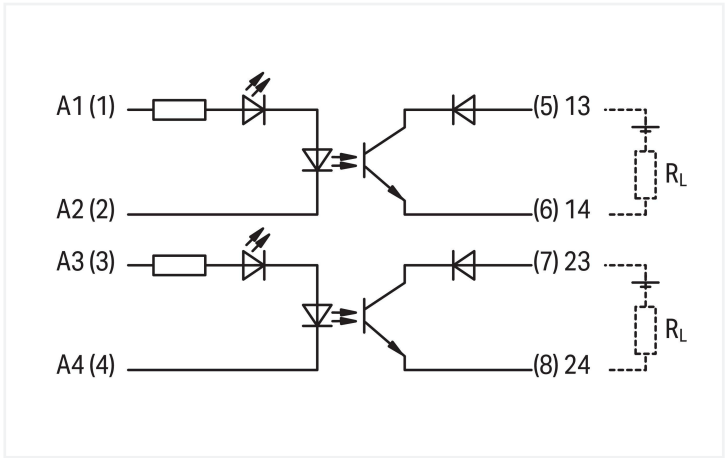
<https://www.wago.com/857-1494>



Color: ■ light gray



Dimensions in mm



Current-carrying capacity curve

Notes	
Note	Optocouplers and solid state relays are designed for use in signal processing networks that are not supplied directly by the low-voltage power supply network.

Technical data	
Control circuit	
Nominal input voltage U_N	DC 24 V
Input voltage range (low level)	DC 0 ... 5 V
Input voltage range (high level)	DC 16.8 ... 31.2 V
Nominal input current at U_N	6 mA
Load circuit	
Circuit type	2-way 2-wire connection
Limiting continuous current	0.1 A
Nominal output voltage	DC 24 V
Output voltage range	DC 9 ... 60 V
Voltage drop	≤ 2 VDC
Leakage current at rated voltage	$\leq 25 \mu\text{A}$
Turn-on time	$\leq 20 \mu\text{s}$
Turn-off time	$\leq 120 \mu\text{s}$
Switching frequency	≤ 1.5 kHz



Signaling	
Status indicator	Yellow LED

Safety and protection	
Rated Voltage	300 V
Overvoltage category	II
Pollution degree	2
Dielectric strength (control/load circuit) (AC, 1 min)	2.5 kVrms
Dielectric strength (channel/channel) (AC, 1 min.)	3.5 kVrms
Insulation type (control/load circuit)	Basic insulation
Insulation type (load/load circuit)	Reinforced insulation (safe isolation)
Insulation type (between adjacent devices of the same type)	Reinforced insulation (safe isolation)
Insulation type (to adjacent devices of different types)	Reinforced insulation (safe isolation)
Protection type	IP20

Connection data	
Connection technology	Push-in CAGE CLAMP®
Solid conductor	0.34 ... 2.5 mm² / 22 ... 14 AWG
Fine-stranded conductor	0.34 ... 2.5 mm² / 22 ... 14 AWG
Fine-stranded conductor; with insulated ferrule	0.34 ... 1.5 mm² / 22 ... 16 AWG
Strip length	9 ... 10 mm / 0.35 ... 0.39 inches

Physical data	
Width	6 mm / 0.236 inches
Height	94 mm / 3.701 inches
Depth from upper-edge of DIN-rail	97.8 mm / 3.85 inches

Mechanical data	
Mounting type	DIN-35 rail
Mounting position	horizontal (standing/lying); vertical

Material data	
Note (material data)	Information on material specifications can be found here
Color	light gray
Insulation material (main housing)	Polyamide (PA66)
Flammability class per UL94	V0
Fire load	0.363 MJ
Weight	30.2 g

Environmental requirements	
Ambient temperature (operation at U _N)	-25 ... +70 °C
Ambient temperature (storage)	-40 ... +70 °C
Processing temperature	-25 ... +50 °C
Temperature range of connection cable	≥ (T _{ambient} + 30 K)
Relative humidity	5 ... 85 % (no condensation permissible)
Operating altitude (max.)	2000 m



Standards and specifications

Standards/specifications	EN 61000-6-2 EN 61000-6-3 EN 61373 EN 61010-2-201 UL 508 (max. 50 °C/0.1 A)
--------------------------	---

Commercial data

Product Group	6 (INTERFACE ELECTRONIC)
eCl@ss 10.0	27-26-15-03
eCl@ss 9.0	27-26-15-03
ETIM 9.0	EC001504
ETIM 8.0	EC001504
PU (SPU)	25 (1) pcs
Packaging type	Box
Country of origin	DE
GTIN	4050821099826
Customs tariff number	85365005000

Environmental Product Compliance

CAS-No.	1303-86-2 7439-92-1 79-94-7
REACH Candidate List Substance	2,2',6,6'-tetrabromo-4,4'-isopropylidenediphenol Diboron trioxide Lead
RoHS Compliance Status	Compliant,With Exemption
RoHS Exemption	6(c) 7(a) 7(c)-I 7(c)-II
SCIP notification number (Austria)	57af3319-7444-4d94-bb8d-34aae68f8577
SCIP notification number (Belgium)	7199ffe9-a6d2-4bb7-bd33-6129e2fb2796
SCIP notification number (Bulgaria)	5bacf8a7-5d2c-4a5b-9f23-2bbe1416c90d
SCIP notification number (Czech Republic)	0189ecbe-86bf-45f1-9d0e-03cceec53e7a
SCIP notification number (Denmark)	62acd2db-7378-4866-bf71-36146db353de
SCIP notification number (Finland)	66bb701c-6f24-479a-a745-54ab521963c9
SCIP notification number (France)	90bd5d27-278a-47f0-859f-e0097af59d89
SCIP notification number (Germany)	cf78282a-1783-4949-9543-70fbac4c523f
SCIP notification number (Hungary)	00616b1a-952c-472a-96de-13608552a86b
SCIP notification number (Italy)	9db7e0b9-eaf8-459d-bdbf-70098daca42b
SCIP notification number (Netherlands)	5f8afb96-d02e-44a1-8a10-0bb1806b8d1c
SCIP notification number (Poland)	d4793033-cf0f-4d48-82c7-8b4c68e1bf56
SCIP notification number (Romania)	17ce3d30-ddb9-4e4c-a240-9fa4bec94c59
SCIP notification number (Sweden)	60fa49bd-797c-40fe-b4f2-dcd3523ccf81



Approvals / Certificates

General approvals



Approval	Standard	Certificate Name
EAC GZO Almaty Standart	TP TC 020/2011	EAC CoC 03081
UL Underwriters Laboratories Inc. (ORDINARY LOCATIONS)	UL 508	E175199 Sec.4

Downloads

Environmental Product Compliance

Compliance Search
Environmental Product Compliance 857-1494



Documentation

Bid Text			
857-1494	19.02.2019	xml 3.86 KB	
857-1494	20.02.2019	docx 15.93 KB	

CAD/CAE-Data

CAD data
2D/3D Models 857-1494



CAE data
EPLAN Data Portal 857-1494
WSCAD Universe 857-1494
ZUKEN Portal 857-1494





1 Compatible Products			
1.1 Optional Accessories			
1.1.1 Ferrule			
1.1.1.1 Ferrule			
Item No.: 216-241 Ferrule; Sleeve for 0.5 mm² / 20 AWG; insulated; electro-tin plated; electrolytic copper; gastight crimped; acc. to DIN 46228, Part 4/09.90; white	Item No.: 216-242 Ferrule; Sleeve for 0.75 mm² / 18 AWG; insulated; electro-tin plated; electrolytic copper; gastight crimped; acc. to DIN 46228, Part 4/09.90; gray	Item No.: 216-243 Ferrule; Sleeve for 1 mm² / AWG 18; insulated; electro-tin plated; electrolytic copper; gastight crimped; acc. to DIN 46228, Part 4/09.90; red	Item No.: 216-244 Ferrule; Sleeve for 1.5 mm² / AWG 16; insulated; electro-tin plated; electrolytic copper; gastight crimped; acc. to DIN 46228, Part 4/09.90; black
1.1.2 Jumper			
1.1.2.1 Jumper			
Item No.: 281-482 Jumper; 2-way; insulated; gray	Item No.: 859-410/000-006 Jumper; for jumper slot; 10-way; insulated; blue	Item No.: 859-410 Jumper; for jumper slot; 10-way; insulated; light gray	Item No.: 859-410/000-005 Jumper; for jumper slot; 10-way; insulated; red
Item No.: 859-410/000-029 Jumper; for jumper slot; 10-way; insulated; yellow	Item No.: 859-402/000-006 Jumper; for jumper slot; 2-way; insulated; blue	Item No.: 859-402 Jumper; for jumper slot; 2-way; insulated; light gray	Item No.: 859-402/000-005 Jumper; for jumper slot; 2-way; insulated; red
Item No.: 859-402/000-029 Jumper; for jumper slot; 2-way; insulated; yellow	Item No.: 859-403/000-006 Jumper; for jumper slot; 3-way; insulated; blue	Item No.: 859-403 Jumper; for jumper slot; 3-way; insulated; light gray	Item No.: 859-403/000-005 Jumper; for jumper slot; 3-way; insulated; red
Item No.: 859-403/000-029 Jumper; for jumper slot; 3-way; insulated; yellow	Item No.: 859-404/000-006 Jumper; for jumper slot; 4-way; insulated; blue	Item No.: 859-404 Jumper; for jumper slot; 4-way; insulated; light gray	Item No.: 859-404/000-005 Jumper; for jumper slot; 4-way; insulated; red
Item No.: 859-404/000-029 Jumper; for jumper slot; 4-way; insulated; yellow	Item No.: 859-405/000-006 Jumper; for jumper slot; 5-way; insulated; blue	Item No.: 859-405 Jumper; for jumper slot; 5-way; insulated; light gray	Item No.: 859-405/000-005 Jumper; for jumper slot; 5-way; insulated; red
Item No.: 859-405/000-029 Jumper; for jumper slot; 5-way; insulated; yellow	Item No.: 859-406/000-006 Jumper; for jumper slot; 6-way; insulated; blue	Item No.: 859-406 Jumper; for jumper slot; 6-way; insulated; light gray	Item No.: 859-406/000-005 Jumper; for jumper slot; 6-way; insulated; red
Item No.: 859-406/000-029 Jumper; for jumper slot; 6-way; insulated; signal yellow	Item No.: 859-407/000-006 Jumper; for jumper slot; 7-way; insulated; blue	Item No.: 859-407 Jumper; for jumper slot; 7-way; insulated; light gray	Item No.: 859-407/000-005 Jumper; for jumper slot; 7-way; insulated; red
Item No.: 859-407/000-029 Jumper; for jumper slot; 7-way; insulated; yellow	Item No.: 859-408/000-006 Jumper; for jumper slot; 8-way; insulated; blue	Item No.: 859-408 Jumper; for jumper slot; 8-way; insulated; light gray	Item No.: 859-408/000-005 Jumper; for jumper slot; 8-way; insulated; red
Item No.: 859-408/000-029 Jumper; for jumper slot; 8-way; insulated; yellow	Item No.: 859-409/000-006 Jumper; for jumper slot; 9-way; insulated; blue	Item No.: 859-409 Jumper; for jumper slot; 9-way; insulated; light gray	Item No.: 859-409/000-005 Jumper; for jumper slot; 9-way; insulated; red



1.1.2.1 Jumper



Item No.: 859-409/000-029
Jumper; for jumper slot; 9-way; insulated; yellow

1.1.3 Marking

1.1.3.1 Double marker carrier



Item No.: 209-128
Adaptor; gray

1.1.3.2 Group marker carrier



Item No.: 249-105
Group marker carrier; gray

1.1.3.3 Marker



Item No.: 209-183
Marker; white



Item No.: 793-5501
WMB marking card; as card; for terminal block width 5 - 17.5 mm; stretchable 5 - 5.2 mm; plain; snap-on type; white



Item No.: 793-502
WMB marking card; as card; MARKED; 1 ... 10 (10x); not stretchable; Horizontal marking; snap-on type; white



Item No.: 793-566
WMB marking card; as card; MARKED; 1 ... 50 (2x); not stretchable; Horizontal marking; snap-on type; white



Item No.: 793-503
WMB marking card; as card; MARKED; 11 ... 20 (10x); not stretchable; Horizontal marking; snap-on type; white



Item No.: 793-504
WMB marking card; as card; MARKED; 21 ... 30 (10x); not stretchable; Horizontal marking; snap-on type; white



Item No.: 793-505
WMB marking card; as card; MARKED; 31 ... 40 (10x); not stretchable; Horizontal marking; snap-on type; white



Item No.: 793-506
WMB marking card; as card; MARKED; 41 ... 50 (10x); not stretchable; Horizontal marking; snap-on type; white



Item No.: 793-501
WMB marking card; as card; not stretchable; plain; snap-on type; white



Item No.: 2009-115
WMB-Inline; for Smart Printer; 1500 pieces on roll; stretchable 5 - 5.2 mm; plain; snap-on type; white

1.1.3.4 Marking device



Item No.: 210-110
Fiber-tip pen

1.1.3.5 Marking strip



Item No.: 2009-110
Marking strips; for Smart Printer; on reel; not stretchable; plain; snap-on type; white

1.1.3.6 Protective marker cover



Item No.: 209-184

Protection cover; transparent

1.1.4 Tool

1.1.4.1 Operating tool

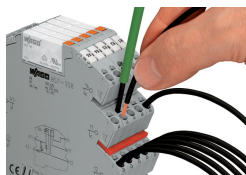


Item No.: 210-720

Operating tool; Blade: 3.5 x 0.5 mm; with a partially insulated shaft; multicoloured

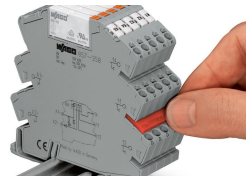
Installation Notes

Conductor termination



Conductor termination

Commoning



Easy commoning using adjacent jumpers

Marking



Marking via WMB Multi Marking System.