

REVISION V

| TABLE 1 | | | | | |
|----------------------|------------|--------------|------------|--------------------|---------------|
| EDGE MOUNT THICKNESS | "A" | "B" | "C" | BODY | CONTACT |
| -EM2 | .130[3.30] | .0670[1.702] | .058[1.47] | QTE-20-01-D-EM2-XX | T-1S42-01-XXX |
| *-EM3 | .160[4.06] | .0980[2.489] | .088[2.24] | QTE-20-01-D-EM3-XX | T-1S42-02-XXX |

* = SEE NOTE 11

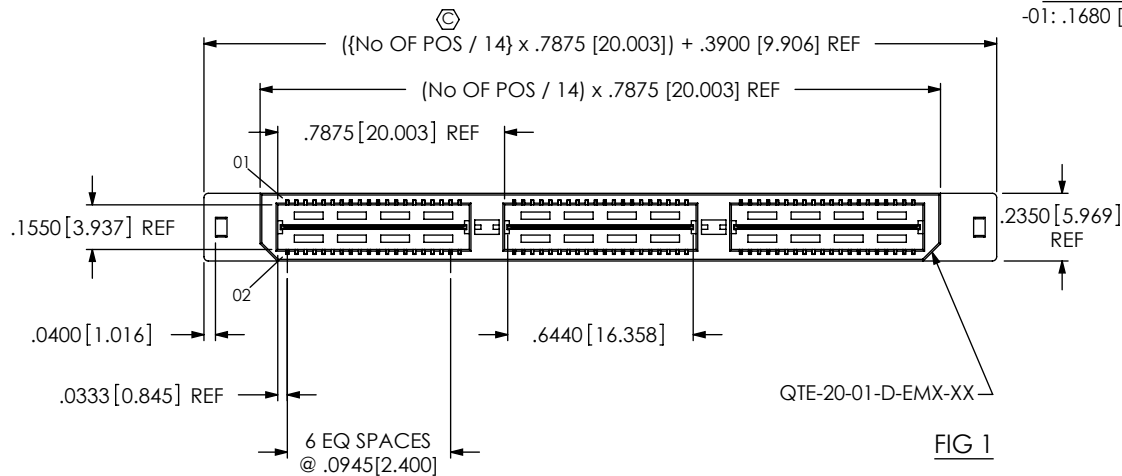


FIG 1

QTE-XXX-01-XXX-D-DP-EMX-XX

No OF POSITIONS
-014, -028, -042
**056, **070
(PER ROW)
**SEE NOTES 12 & 14

LEAD STYLE
-01: .1680 [4.267]

OPTION
-GP: GUIDE POST
(USE QTE-20-01-D-EMX-XX-GP
(SEE FIG 2, SHEET 2)

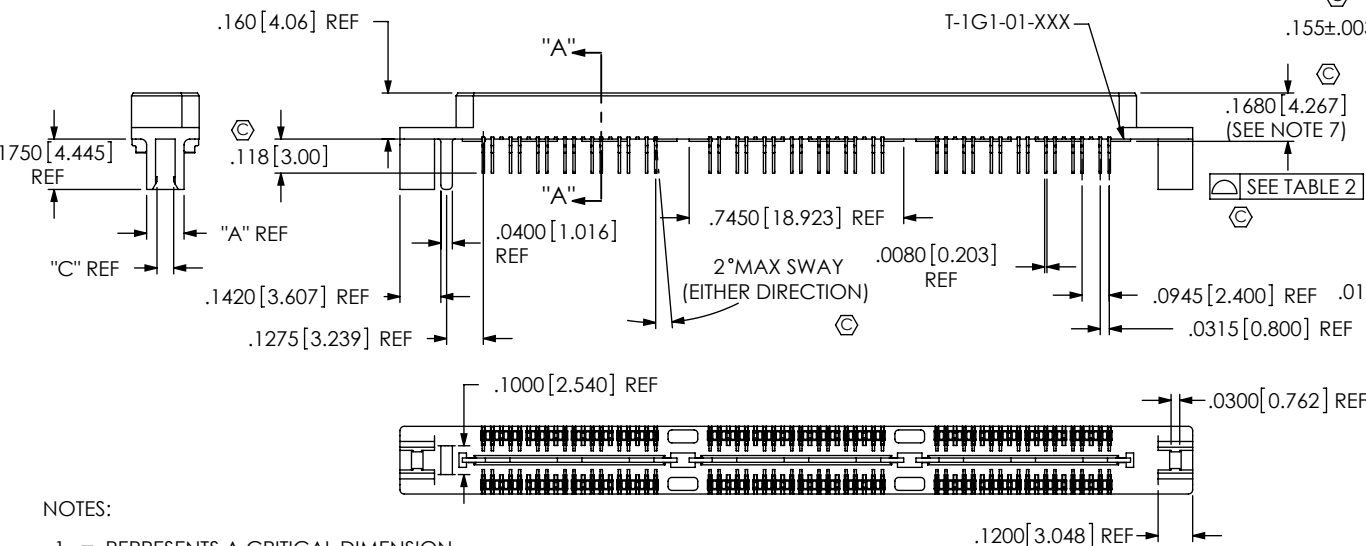
EDGE MOUNT THICKNESS
-EM2: .064[1.63] +/- .004 PCB
(USE QTE-20-01-D-EM2-XX & T-1S42-01-XXX)
*-EM3:(USE QTE-20-01-D-EM3-XX &
T-1S42-02-XXX)
(SEE NOTE 11)

DIFFERENTIAL PAIR
ROW SPECIFICATION
-D: DOUBLE (USE QTE-20-XX-D-EMX-XX)

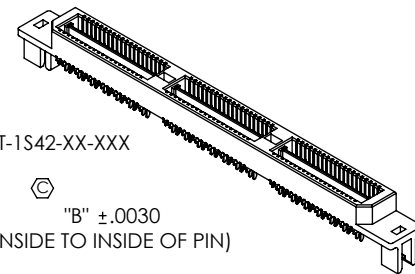
* = NOT ENGINEERING
APPROVED

No OF BANKS

PLATING SPECIFICATION
-F: 3μ" SELECTIVE GOLD IN CONTACT AREA, MATTE TIN
ON TAIL (T-1S42-XX-F & T-1G1-01-F SEE NOTE 6)
-L: 10μ" SELECTIVE GOLD IN CONTACT AREA, MATTE TIN
ON TAILS (USE T-1S42-XX-L & T-1G1-01-L)
-H: 30μ" GOLD IN CONTACT AREA, 3μ" GOLD ON TAIL
(USE T-1S42-XX-H & T-1G1-01-G)
-STL: 30μ" SELECTIVE GOLD IN CONTACT AREA, TIN/LEAD
(90%/10 +/-5%) TAIL (USE T-1S42-XX-STL & T-1G1-01-STL)
-FTL: 3μ" SELECTIVE GOLD IN CONTACT AREA, TIN/LEAD
(90%/10 +/-5%) TAIL (USE T-1S42-XX-FTL & T-1G1-01-FTL)



SECTION "A"-A"



"B" ±.0030
(INSIDE TO INSIDE OF PIN)

| TABLE 2 | | |
|------------------|-----------------------|--------------|
| No OF POSITIONS | GND PLANE COPLANARITY | ASSEMBLY BOW |
| -014 THRU -042 | .0040 | .0040 |
| **056 THRU **070 | .0050 | .0050 |

** = SEE NOTES 12 & 14

NOTES:

1. Ⓢ REPRESENTS A CRITICAL DIMENSION.
2. MAXIMUM BURR ALLOWANCE: .0015 [0.038]
3. MINIMUM TERMINAL RETENTION: 6 OZ.
4. MINIMUM GROUND PLANE RETENTION: 1 LB.
5. PARTS TO BE MOLD-TO-POSITION.
6. -L PLATING CAN BE SUBSTITUTED FOR -F PLATING.
7. MAXIMUM VARIANCE OF .002 [0.05]
8. NOTE DELETED.
9. BOARD THICKNESS TO BE MEASURED FROM SOLDER PAD TO SOLDER PAD.
10. http://www.samtec.com/processing/edgemt_tectalk/index.htm
FOR INFORMATION ON PROCESSING EM PARTS.
11. -EM3 IS NOT A STANDARD OFFERING; AVAILABLE AS AN ASP ONLY. PLEASE CONTACT SAMTEC INTERCONNECT PROCESSING GROUP WITH ORDER INQUIRIES
12. FOR NEW APPLICATIONS REQUIRING THESE POSITIONS, PLEASE CONTACT SAMTEC INTERCONNECT PROCESSING GROUP.
13. PARTS WITHOUT -TY OPTION SHALL BE PACKAGED IN TRAYS.
14. AVAILABLE FOR EXISTING CUSTOMERS ONLY.

UNLESS OTHERWISE SPECIFIED,
DIMENSIONS ARE IN INCHES.
TOLERANCES ARE:
DECIMALS ANGLES
.XX: ±.01 [.3]
.XXX: ±.005 [.13]
.XXXX: ±.0020 [.051]

PROPRIETARY NOTE

THIS DOCUMENT CONTAINS INFORMATION
CONFIDENTIAL AND PROPRIETARY TO
SAMTEC, INC. AND SHALL NOT BE REPRODUCED
OR TRANSFERRED TO OTHER DOCUMENTS OR
DISCLOSED TO OTHERS OR USED FOR ANY
PURPOSE OTHER THAN THAT WHICH IT WAS
OBTAINED WITHOUT THE EXPRESSED WRITTEN
CONSENT OF SAMTEC, INC.

MATERIAL: DO NOT SCALE DRAWING
INSULATOR: LCP, COLOR: BLACK
TERMINAL & GROUND PLANE: PHOS BRONZE

SHEET SCALE: 1.5:1

samtec

520 PARK EAST BLVD, NEW ALBANY, IN 47150
PHONE: 812-944-6733 FAX: 812-948-5047
e-Mail: info@SAMTEC.com code 55322

DESCRIPTION:
.8mm HS EDGEMOUNT TERMINAL ASSEMBLY

DWG. NO.
QTE-XXX-01-XXX-D-DP-EMX-XX

BY: KEVIN B 12/12/00 SHEET 1 OF 2

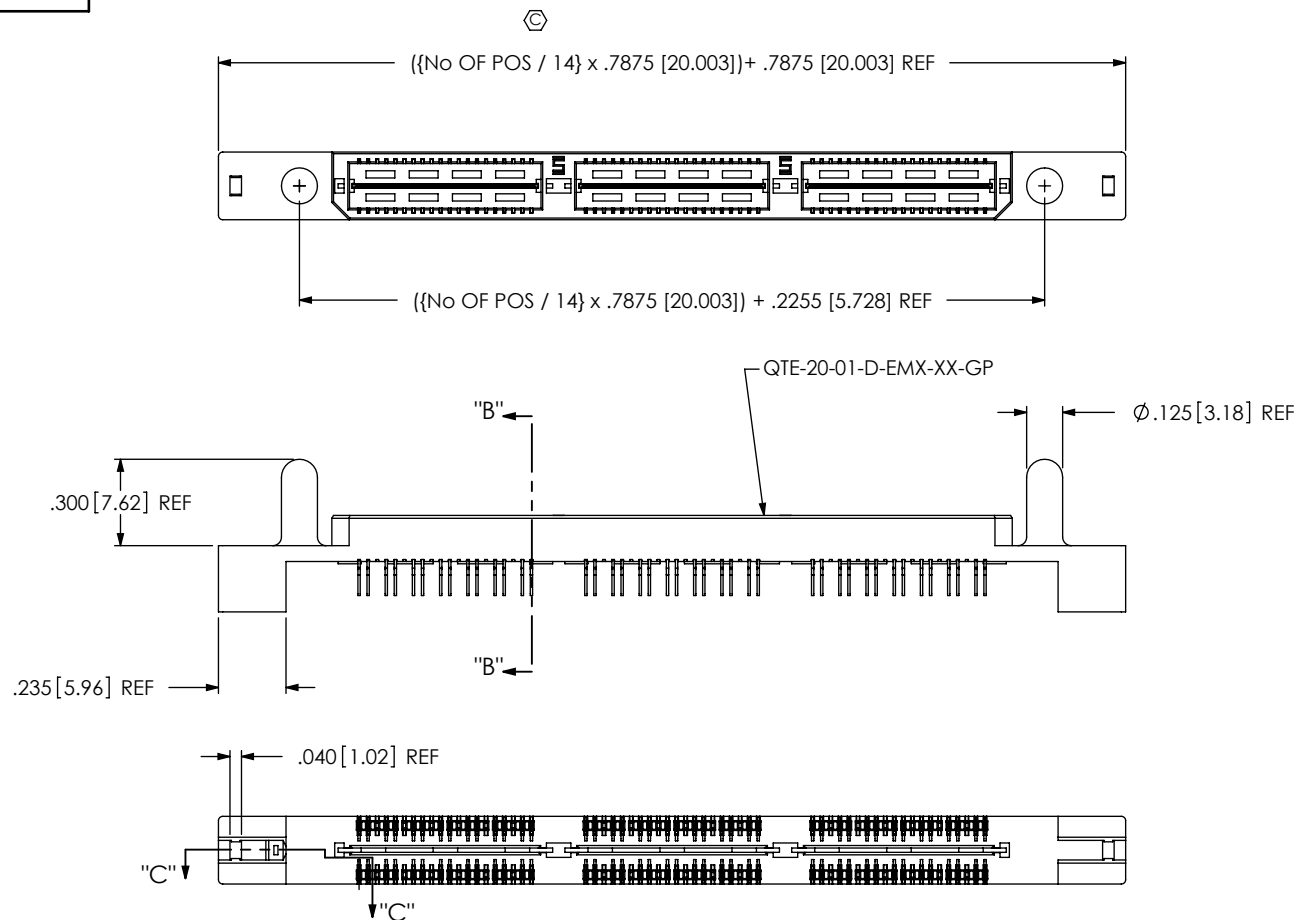
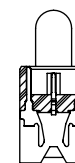
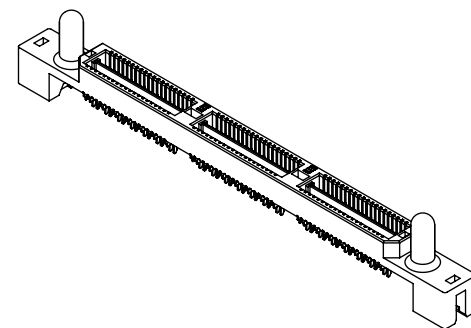
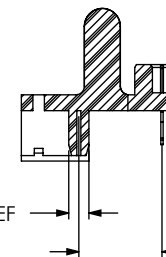


FIG 2
-GP OPTION SHOWN
(SAME AS FIG 1, UNLESS OTHERWISE STATED)



SECTION "B"-"B"



SECTION "C"-"C"

C:\EnterpriseVault\DWG\MISC\MKTG\QTE-XXX-01-XXX-D-DP-EMX-XX-MKT.SLDDRW

PROPRIETARY NOTE
THIS DOCUMENT CONTAINS INFORMATION
CONFIDENTIAL AND PROPRIETARY TO
SAMTEC, INC. AND SHALL NOT BE REPRODUCED
OR TRANSFERRED TO OTHER DOCUMENTS OR
DISCLOSED TO OTHERS OR USED FOR ANY
PURPOSE OTHER THAN THAT WHICH IT WAS
OBTAINED WITHOUT THE EXPRESSED WRITTEN
CONSENT OF SAMTEC, INC.

DO NOT SCALE DRAWING

SHEET SCALE: 1.5:1

samtec

520 PARK EAST BLVD, NEW ALBANY, IN 47150
PHONE: 812-944-6733 FAX: 812-948-5047
e-Mail: info@SAMTEC.com code 55322

DESCRIPTION:
.8mm HS EDGEMOUNT TERMINAL ASSEMBLY

DWG. NO.
QTE-XXX-01-XXX-D-DP-EMX-XX

BY: KEVIN B 12/12/00 SHEET 2 OF 2