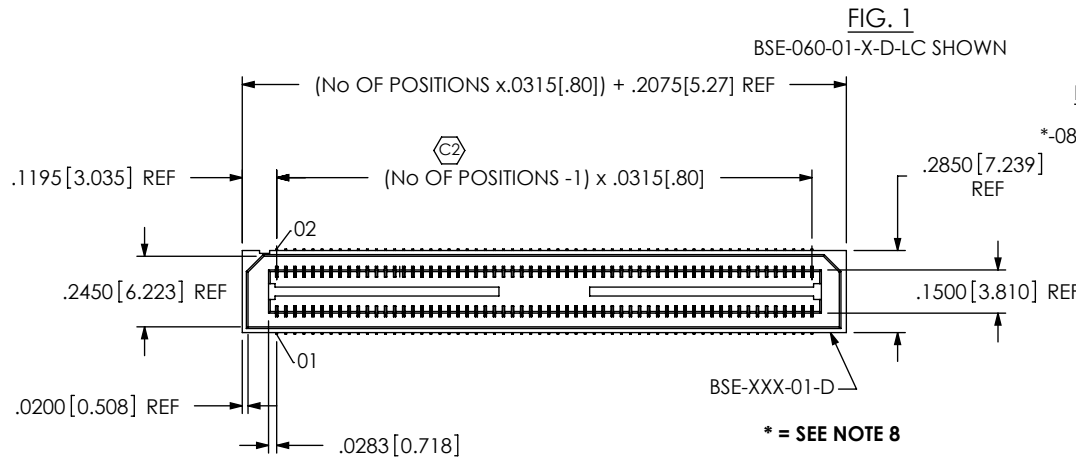


DO NOT  
SCALE FROM  
THIS PRINT



**BSE-XXX-01-X-D-XX**

No OF POSITIONS  
-020, -040, -060,  
\*-080, \*-090, \*-100, \*-120  
(PER ROW)

LEAD STYLE  
-01: .1280 [3.25]

PLATING SPECIFICATION  
-F: FLASH SELECTIVE GOLD WITH MATTE TIN TAILS (SEE NOTE 6 & 9)  
-L: LIGHT SELECTIVE GOLD WITH MATTE TIN TAILS (SEE NOTE 9)  
-H: HEAVY GOLD (SEE NOTE 9)  
-C: ELECTRO-POLISHED SELECTIVE (SEE NOTE 9)

OPTION  
-A: ALIGNMENT PINS (USE BSE-XXX-01-D-A)  
-LC: LOCKING CLIPS (USE LC-08-TM-01)  
-TR: TAPE & REEL (80 POS. MAX)  
-FL: FRICTION LOCK (SEE FIG. 2) (USE BSE-XXX-01-D-X-FL)

ROW SPECIFICATION  
-D: DOUBLE (USE BSE-XXX-01-D-X)

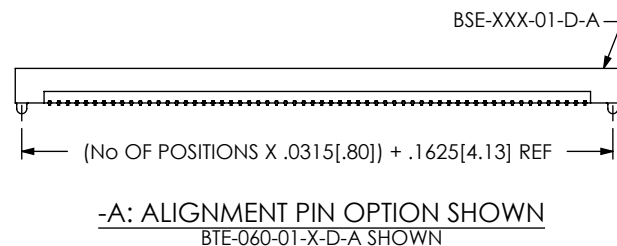
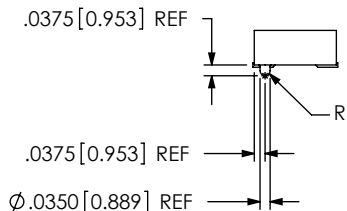
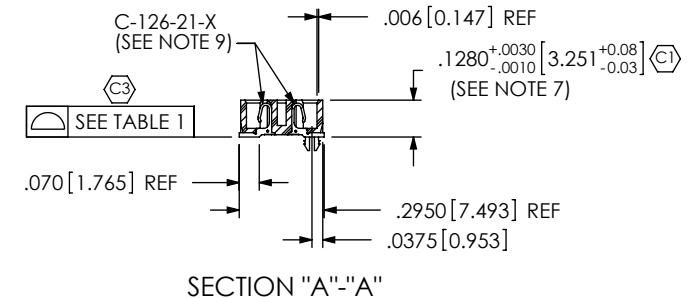
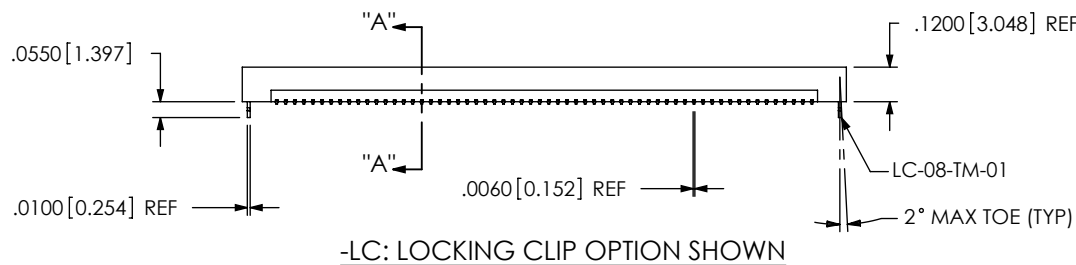
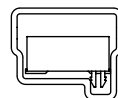


TABLE 1	
No OF POS	COPLANARITY
-020 THRU -080	.004[.10]
-90 THRU -120	.006[.15]

NOTES:

1. © REPRESENTS A CRITICAL DIMENSION.
2. NOTE DELETED.
3. BURR ALLOWANCE: .0015 [.04] MAX.
4. MINIMUM PUSHOUT FORCE: .5 LB.
5. NOTE DELETED.
6. -L PLATING MAY BE SUBSTITUTED FOR -F PLATING.
7. MAX VARIANCE: .002 [.05]
8. FOR NEW APPLICATIONS REQUIRING THESE POSITIONS, PLEASE CONTACT SAMTEC INTERCONNECT PROCESSING GROUP.
9. -90 THROUGH -120 POSITION PARTS USE C-269-11-X. DO NOT SUB C-126-XX-X OR C-224-01-X.

PACKAGING VIEW



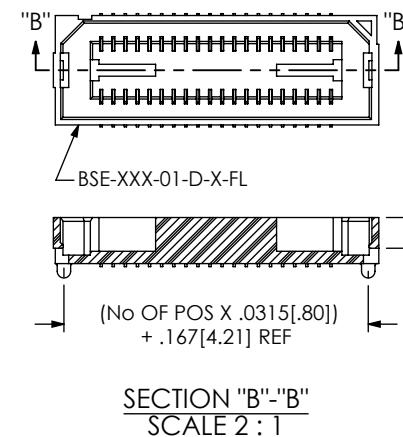
TUBE: PT-1-24-03-78  
PLUG: TP-09

UNLESS OTHERWISE SPECIFIED,  
DIMENSIONS ARE IN INCHES.  
TOLERANCES ARE:  
DECIMALS ANGLES  
.XX: ±.01[.25]  
.XXX: ±.005[.13]  
.XXXX: ±.0020[.051]

PROPRIETARY NOTE  
THIS DOCUMENT CONTAINS INFORMATION  
CONFIDENTIAL AND PROPRIETARY TO  
SAMTEC, INC. AND SHALL NOT BE REPRODUCED  
OR TRANSFERRED TO OTHER DOCUMENTS OR  
DISCLOSED TO OTHERS OR USED FOR ANY  
PURPOSE OTHER THAN THAT WHICH IT WAS  
OBTAINED WITHOUT THE EXPRESSED WRITTEN  
CONSENT OF SAMTEC, INC.

MATERIAL: DO NOT SCALE DRAWING SHEET SCALE: 1.5:1  
INSULATOR: BLACK LCP  
SOCKET: PHOS BRONZE

F:\DWG\MISC\MKTG\BSE-XXX-01-X-D-XX-MKT.SLDDRW



**FIG. 2**  
-FL OPTION  
BSE-020-01-X-D-A-FL SHOWN  
(SAME AS FIG. 1, UNLESS OTHERWISE STATED)

**samtec**

520 PARK EAST BLVD, NEW ALBANY, IN 47150  
PHONE: 812-944-6733 FAX: 812-948-5047  
e-Mail: info@SAMTEC.com code: 55322

DESCRIPTION:  
.8mm DOUBLE ROW SOCKET ASSEMBLY

DWG. NO. **BSE-XXX-01-X-D-XX**

BY: DEAN P 05/24/1999 SHEET 1 OF 1