

DO NOT
SCALE FROM
THIS PRINT

TABLE 1	
No OF POS	COPLANARITY INCLUDING GROUND PLANE
-030 THRU -060	.004 [0.10]
-090	.006 [0.15]

TABLE 2		
POS	"A"	"B"
-030	.839 [21.31]	.793 [20.13]
-060	1.627 [41.31]	1.580 [40.13]
-090	2.417 [61.38]	2.368 [60.13]

QSH-XXX-11-X-D-XXX

No OF POSITIONS
-030, -060, -090,
(PER ROW)

LEAD STYLE
-11: .1290[3.277]

PLATING SPECIFICATION

**S: 30μ" SELECTIVE GOLD IN CONTACT AREA,
MATTE TIN ON TAIL
**F: 3μ" FLASH SELECTIVE IN CONTACT AREA,
MATTE TIN ON TAIL
(SEE NOTE 7)
-L: 10μ" LIGHT SELECTIVE GOLD IN CONTACT
AREA, MATTE TIN ON TAIL
**H: 30μ" HEAVY GOLD IN CONTACT AREA,
3μ" GOLD ON TAIL
**C: 50μ" ELECTRO-POLISHED SELECTIVE GOLD
IN CONTACT AREA, MATTE TIN ON TAIL

** = NOT TOOLED

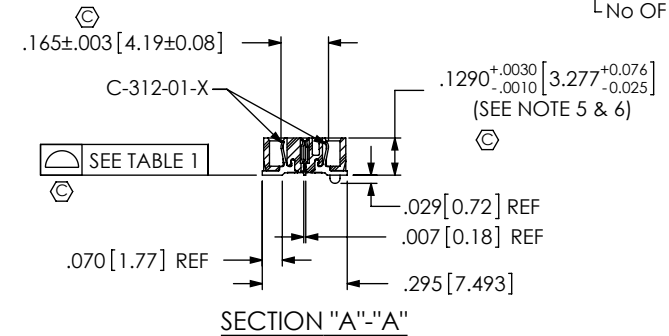
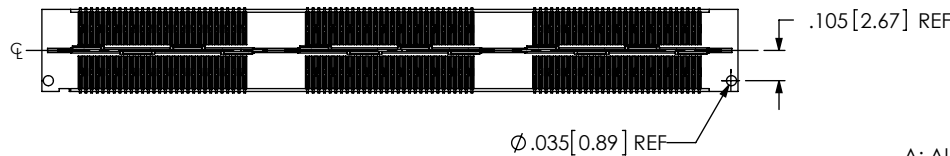
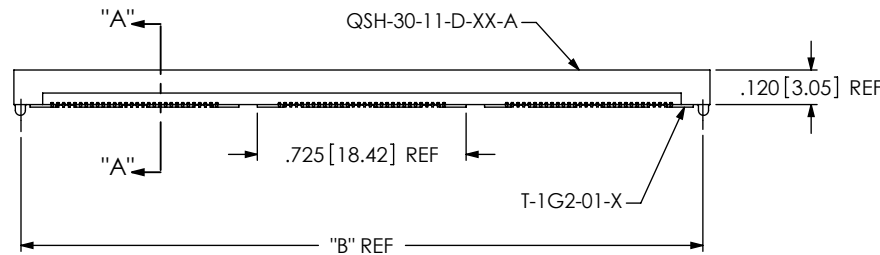
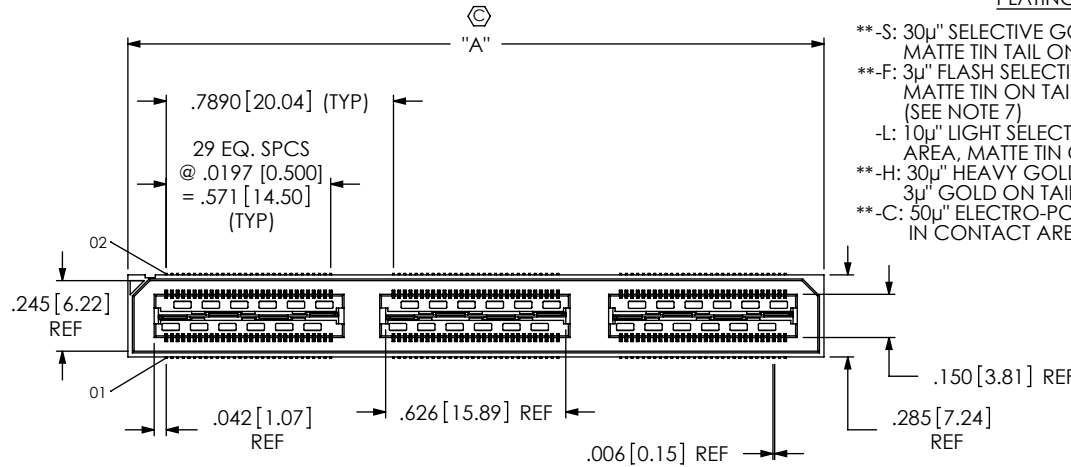
OPTION

-A: ALIGNMENT PINS
(USE QSH-30-11-D-XX-A)
(NOT AVAILABLE WITH -LC)
**LC: LOCKING CLIPS
(USE LC-08-TM-01, SEE FIG 2, SHT 2)
(NOT AVAILABLE WITH -A)
(SEE NOTE 10)
**GP: GUIDE POSTS
(USE QSH-30-11-D-XX-X-GP)
(SEE FIG 4, SHT 3)
(TAPE & REEL FOR -GP, -060 POS MAX)
-K: POLYIMIDE FILM PAD
(USE K-DOT-.325-.450-.005, SEE FIG 3, SHT 2)
-TR: TAPE & REEL (-090 POS MAX)
**FL: FRICTION LOCKS
(SEE FIG 5, SHT 3)
(NOT AVAILABLE WITH -GP)
**RT1: RETENTION (MUST USE -A OPTION)
(USE QSH-30-11-D-XX-A-RT1
& SUB-SC-05-01-FF, SEE FIG 6, SHT 4)
(NOT AVAILABLE WITH -LC, -GP, OR -FL)
**L: LATCHING
(USE QSH-30-11-D-XX-X-L, SEE FIG 7, SHT 4)
(NOT AVAILABLE WITH -LC, -GP, -FL, OR -RT1)

ROW SPECIFICATION

-D: DOUBLE (USE QSH-30-11-D-XX)

No OF BANKS



SECTION "A"- "A"

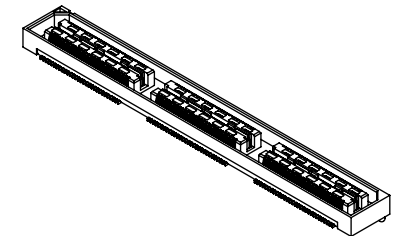


FIG 1
-A: ALIGNMENT PIN OPTION
(QSH-090-11-X-D-A SHOWN)

NOTES:

1. Ⓢ REPRESENTS A CRITICAL DIMENSION.
2. MINIMUM CONTACT RETENTION: 3 OZ.
3. MINIMUM GROUND PLANE RETENTION: 8 OZ.
4. MAXIMUM BURR ALLOWANCE: .0015[0.038].
5. MAXIMUM VARIANCE: .002[0.05].
6. DIMENSION APPLIES TO CONTACT & GROUND PLANE.
7. -L PLATING CAN BE SUBSTITUTED FOR -F PLATING.
8. SUB-SC-05-01-XX RETENTION TO BE 1.0 LBF IN BODY.
9. NOTE DELETED.
10. DUE TO THE HIGH AMOUNT OF INSERTION FORCE NEEDED, THE -LC OPTION IS NOT COMPATIBLE WITH AUTO PLACEMENT. SAMTEC RECOMMENDS MANUAL PLACEMENT FOR ALL ASSEMBLIES WITH THE -LC OPTION.

UNLESS OTHERWISE SPECIFIED,
DIMENSIONS ARE IN INCHES.
TOLERANCES ARE:
DECIMALS ANGLES
.XX: ±.01[.3]
.XXX: ±.005[.13]
.XXXX: ±.0020[.051]

PROPRIETARY NOTE

THIS DOCUMENT CONTAINS INFORMATION
CONFIDENTIAL AND PROPRIETARY TO
SAMTEC, INC. AND SHALL NOT BE REPRODUCED
OR TRANSFERRED TO OTHER DOCUMENTS OR
DISCLOSED TO OTHERS OR USED FOR ANY
PURPOSE OTHER THAN THAT WHICH IT WAS
OBTAINED WITHOUT THE EXPRESSED WRITTEN
CONSENT OF SAMTEC, INC.

MATERIAL: DO NOT SCALE DRAWING SHEET SCALE: 3:2
INSULATOR: LCP UL94V-0, COLOR: NATURAL
CONTACT & GROUND PLANE: PHOS BRONZE

F:\DWG\MISC\MKTG\QSH-XXX-11-X-D-XXX-MKT.SLDDRW

samtec

520 PARK EAST BLVD, NEW ALBANY, IN 47150
PHONE: 812-944-6733 FAX: 812-948-5047
e-Mail: info@SAMTEC.com code 55322

DESCRIPTION:
.5mm DOUBLE ROW HS SOCKET ASSEMBLY
DWG. NO. QSH-XXX-11-X-D-XXX
BY: J. BROWNING 08/09/2010 SHEET 1 OF 4

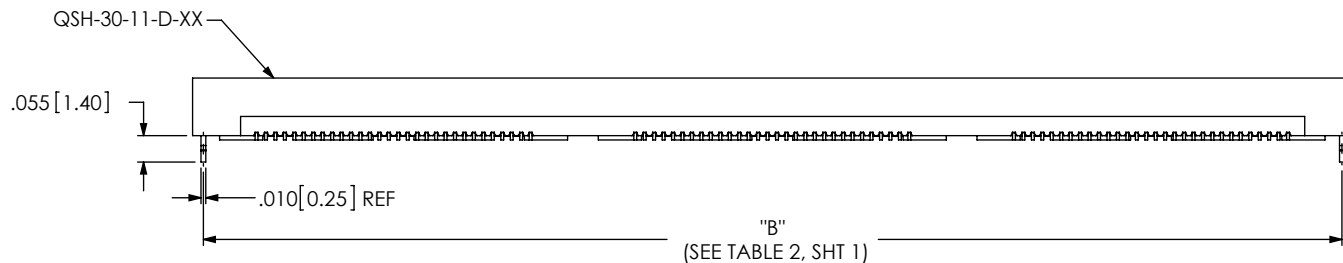
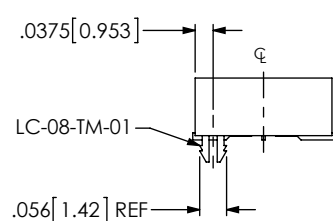


FIG 2
 **LC: LOCKING CLIP OPTION
 (QSH-090-11-X-D-LC SHOWN)
 (NOT AVAILABLE WITH -A OPTION)
 (SAME AS FIG 1, EXCEPT AS SHOWN)
 (** NOT TOOLED)

TABLE 3								
No OF POS	"R"				"S"			
	-LC, -A, -FL	-GP	-RT1	-L	-LC, -A, -FL	-GP	-RT1	-L
-030	.839 [21.31]	1.216 [30.89]	1.129 [28.66]	1.048 [26.61]	.257 [6.53]	.446 [11.32]	.402 [10.20]	.361 [9.18]
-060	1.627 [41.31]	2.004 [50.89]	1.916 [48.67]	1.835 [46.61]	.651 [16.53]	.839 [21.32]	.796 [20.21]	.755 [19.18]
-090	2.417 [61.38]	2.791 [70.89]	2.704 [68.67]	2.623 [66.61]	1.046 [26.56]	1.233 [31.32]	1.189 [30.21]	1.149 [29.18]

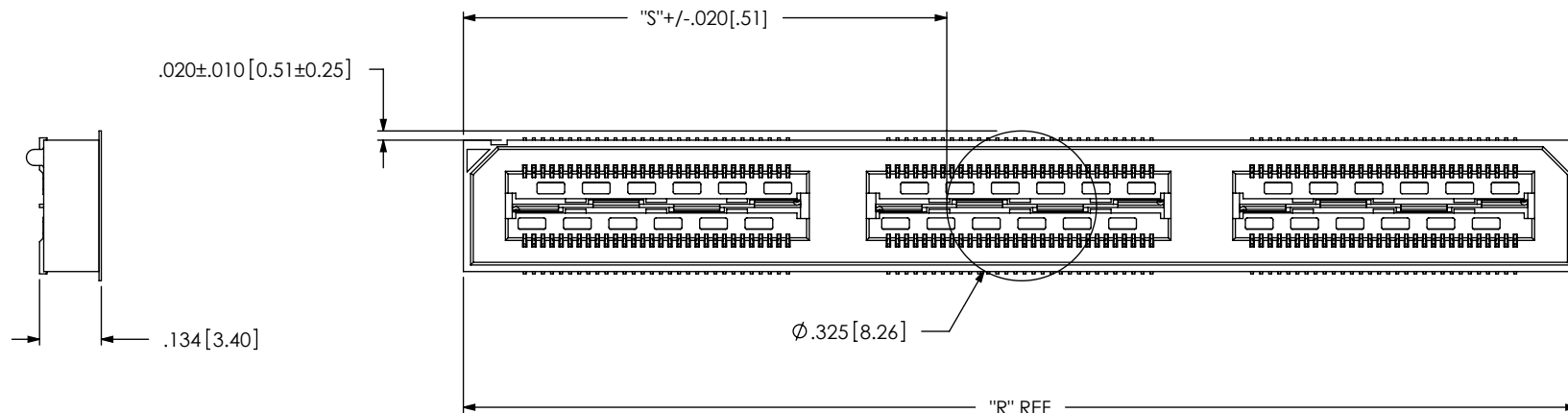


FIG 3
 -K: POLYIMIDE FILM PAD
 (USE K-DOT-.325-.450-.005)

PROPRIETARY NOTE
 THIS DOCUMENT CONTAINS INFORMATION
 CONFIDENTIAL AND PROPRIETARY TO
 SAMTEC, INC. AND SHALL NOT BE REPRODUCED
 OR TRANSFERRED TO OTHER DOCUMENTS OR
 DISCLOSED TO OTHERS OR USED FOR ANY
 PURPOSE OTHER THAN THAT WHICH IT WAS
 OBTAINED WITHOUT THE EXPRESSED WRITTEN
 CONSENT OF SAMTEC, INC.

DO NOT SCALE DRAWING

SHEET SCALE: 2.5:1

samtec

520 PARK EAST BLVD, NEW ALBANY, IN 47150
 PHONE: 812-944-6733 FAX: 812-948-5047
 e-Mail: info@SAMTEC.com code 55322

DESCRIPTION:
 .5mm DOUBLE ROW HS SOCKET ASSEMBLY

DWG. NO.
 QSH-XXX-11-X-D-XXX

BY: J. BROWNING 08/09/2010 SHEET 2 OF 4

TABLE 4		
POS	"C"	"D"
-030	1.216 [30.89]	1.013 [25.73]
-060	2.004 [50.89]	1.801 [45.73]
-090	2.791 [70.89]	2.588 [65.74]

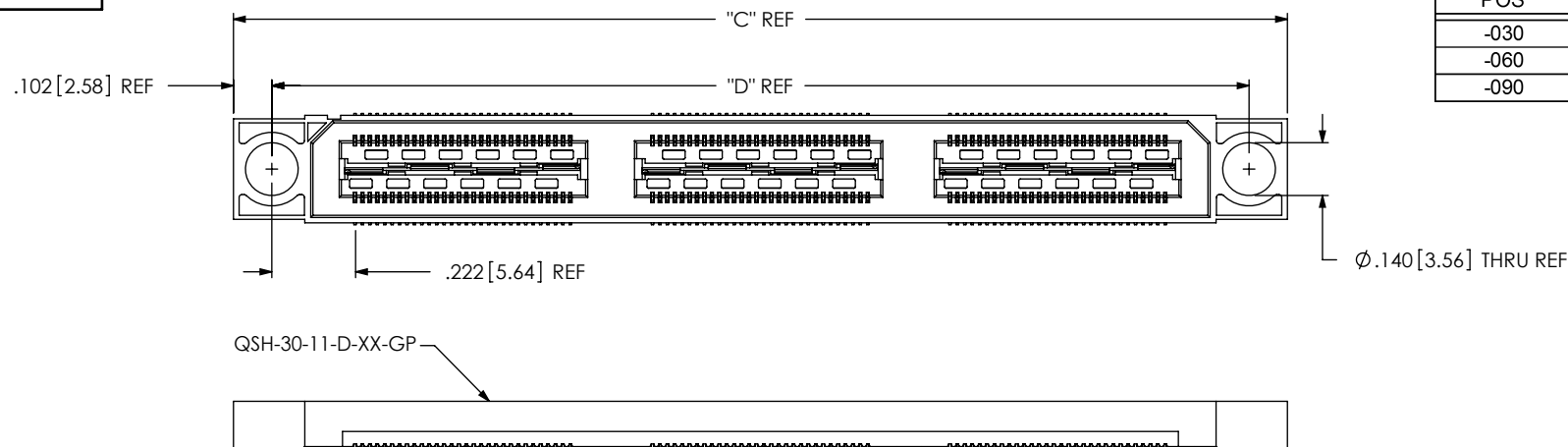


FIG 4
 **_GP: GUIDE POSTS
 (QSH-090-11-X-D-GP SHOWN)
 (SAME AS FIG 1, EXCEPT AS SHOWN)
 (** NOT TOOLED)

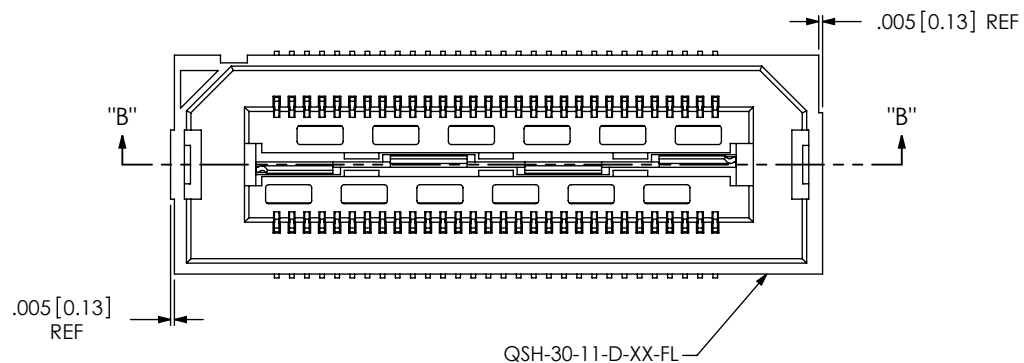
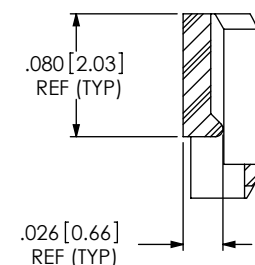
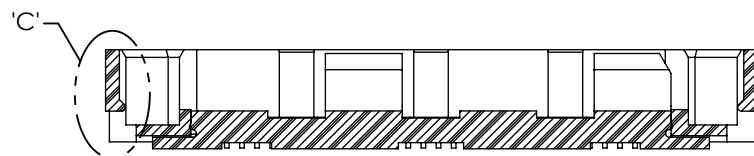


FIG 5
 **_FL: FRICTION LOCKS
 (QSH-030-11-X-D-FL SHOWN)
 (NOT AVAILABLE WITH -GP OPTION)
 (SAME AS FIG 1, EXCEPT AS SHOWN)
 (** NOT TOOLED)



DETAIL 'C'
 SCALE 8 : 1



SECTION "B"-"B"
 SCALE 4 : 1

PROPRIETARY NOTE

THIS DOCUMENT CONTAINS INFORMATION
 CONFIDENTIAL AND PROPRIETARY TO
 SAMTEC, INC. AND SHALL NOT BE REPRODUCED
 OR TRANSFERRED TO OTHER DOCUMENTS OR
 DISCLOSED TO OTHERS OR USED FOR ANY
 PURPOSE OTHER THAN THAT WHICH IT WAS
 OBTAINED WITHOUT THE EXPRESSED WRITTEN
 CONSENT OF SAMTEC, INC.

DO NOT SCALE DRAWING

SHEET SCALE: 1.5:1

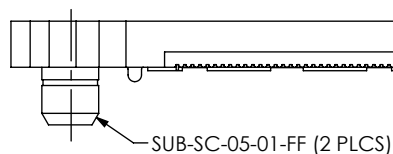
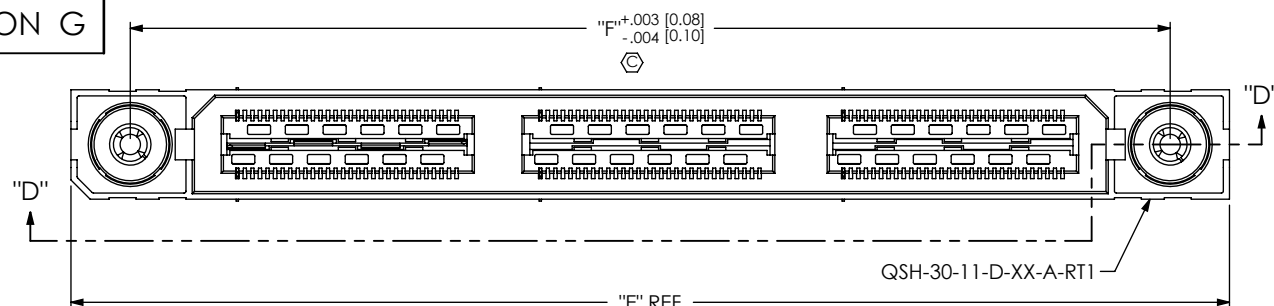
samtec

520 PARK EAST BLVD, NEW ALBANY, IN 47150
 PHONE: 812-944-6733 FAX: 812-948-5047
 e-Mail: info@SAMTEC.com code 55322

DESCRIPTION:
 .5mm DOUBLE ROW HS SOCKET ASSEMBLY

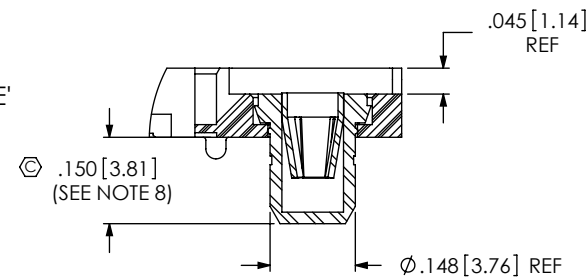
DWG. NO. QSH-XXX-11-X-D-XXX

BY: J. BROWNING 08/09/2010 SHEET 3 OF 4



SECTION "D"-"D"

FIG 6
 **RT1: RETENTION OPTION
 (MUST USE -A OPTION)
 (QSH-090-11-X-D-A-RT1 SHOWN)
 (NOT AVAILABLE WITH -LC, -GP, OR -FL OPTIONS)
 (SAME AS FIG 1, EXCEPT AS SHOWN)
 (** NOT TOOLED)



DETAIL 'E'
 SCALE 3:1

TABLE 5		
POS	"E"	"F"
-030	1.438 [36.51]	1.129 [28.66]
-060	2.225 [56.52]	1.916 [48.67]
-090	3.013 [76.52]	2.704 [68.67]

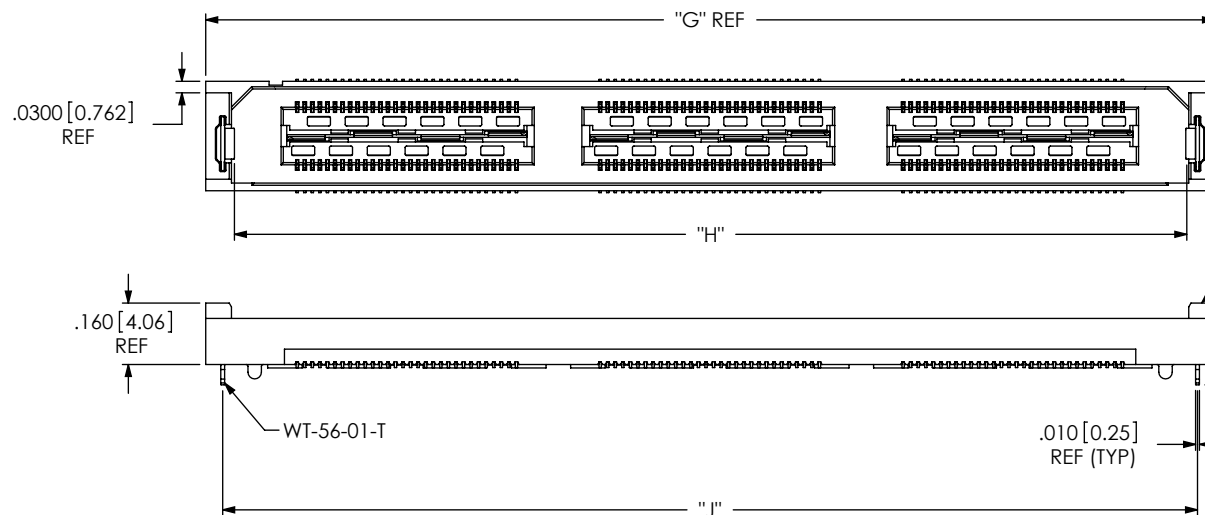


TABLE 6			
POS	"G"	"H"	"J"
-030	1.048 [26.61]	.897 [22.78]	.959 [24.36]
-060	1.835 [46.61]	1.684 [42.78]	1.747 [44.36]
-090	2.623 [66.61]	2.472 [62.78]	2.534 [64.36]

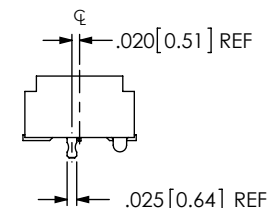


FIG 7
 **L: LATCHING OPTION
 (QSH-090-11-X-D-A-L SHOWN)
 (NOT AVAILABLE WITH -LC, -GP, -FL, OR -RT1 OPTIONS)
 (SAME AS FIG 1, EXCEPT AS SHOWN)
 (** NOT TOOLED)

PROPRIETARY NOTE
 THIS DOCUMENT CONTAINS INFORMATION
 CONFIDENTIAL AND PROPRIETARY TO
 SAMTEC, INC. AND SHALL NOT BE REPRODUCED
 OR TRANSFERRED TO OTHER DOCUMENTS OR
 DISCLOSED TO OTHERS OR USED FOR ANY
 PURPOSE OTHER THAN THAT WHICH IT WAS
 OBTAINED WITHOUT THE EXPRESSED WRITTEN
 CONSENT OF SAMTEC, INC.

DO NOT SCALE DRAWING

SHEET SCALE: 2:1

samtec

520 PARK EAST BLVD, NEW ALBANY, IN 47150
 PHONE: 812-944-6733 FAX: 812-948-5047
 e-Mail info@SAMTEC.com code 55322

DESCRIPTION:
 .5mm DOUBLE ROW HS SOCKET ASSEMBLY

DWG. NO. **QSH-XXX-11-X-D-XXX**

BY: J. BROWNING08/09/2010 SHEET 4 OF 4