

Illuminated pushbutton Ø 16 mm silver contact

82-4152.1123



<https://eao.com/p/82-4152.1123>

Your product:



82-4152.1123

Illuminated pushbutton Ø
16 mm silver contact

FRONT

Front dimension:	Ø 18 mm
Front bezel shape:	flush
Front bezel material:	Stainless steel
Front form:	round

MOUNTING

Mounting cut-out:	Ø 16 mm
Mounting type:	Panel mounting

OPERATING-/INDICATION PART

Lens illumination:	illuminative
Lens colour:	Silver
Lens shape:	flush
Illumination colour:	Blue
Lens optics:	opaque
Shape of illumination:	Ring
Lens material:	Stainless steel

ELECTRICAL CHARACTERISTICS

Operating voltage:	12 V AC/DC
Rated insulation voltage Ui:	250 V
Contacts:	1 C

Operation current:	7 mA	
Rated Operational Voltage Ue:	250 VAC	
Electric strength:	1500 VAC, 50 Hz 1 minute between life terminals and ground	
Thermal current Ith:	5 A	
Electrical lifetime:	50 000 cycles of operation	
Switching voltage and switching current:	according to IEC 60947-5-1 (Silver contacts) Service categorie AC-15 Voltage 24 VAC 35 VAC 110 VAC 220 VAC Switch rating DC service categorie DC-13 (Silver contacts) Voltage 24 VDC 35 VDC 110 VDC 220 VDC	Current 1 A 1 A (M12 versio 1 A 0.5 A Current 0.7 A 0.5 A (M12 vers 0.2 A 0.1 A
	according to UL 508 (Silver contacts) cosφ 0,75 ... 0,8 Voltage 120 VAC 240 VAC 24 VAC	Current 5 A 3 A 1 A
Pollution degree:	2, according to EN IEC 60947-1	

MECHANICAL CHARACTERISTIC

Operating force:	4 N ... 7 N
Operating Travel:	ca. 3 mm
Mechanical lifetime:	1 Mio. cycles of operation
Switching action:	Momentary
Tightening torque:	0.5 ... 0.6 Nm, Screw terminal 0.1 Nm
Switching system:	Snap-action switching element
Contact material:	Silver
Terminal:	Screw terminal
Weight:	0.018 kg

AMBIENT CONDITION

Operating temperature:	– 30 °C ... + 70 °C
Storage temperature:	– 40 °C ... + 80 °C
Shock resistance:	

Max. 500 m / s² as per IEC 60068-2-27

Climate resistance: Damp heat, 21 days according to IEC 60512-11

IP front protection: IP65, IP67

Vibration resistance: 10 ... 500 Hz, amplitude 1.5 mm p-p according to IEC 60068-2-6

CERTIFICATE

Conformities: CE, 2011 / 65 / EC (RoHS), 2014 / 35 / EU (LVD)

RoHS: RoHS compliant

Approbations: CB, CCC, C UL, UL

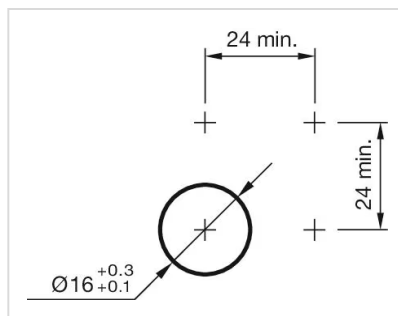
REACH: REACH compliant

OTHER

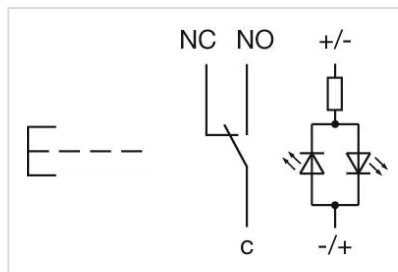
Kind of illumination: Single-LED

Short Description: Illuminated pushbutton Ø 16 mm silver contact, Momentary, 12 V AC/DC, 1 C, Screw terminal, round, Stainless steel, Blue, Silver

Mounting cut-outs:



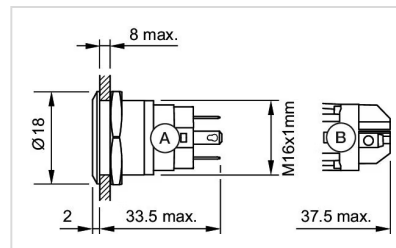
Wiring diagrams:



Component layouts:



Dimension drawings:



A = Solder terminal
B = Screw terminal