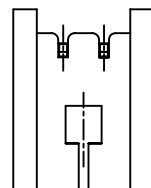
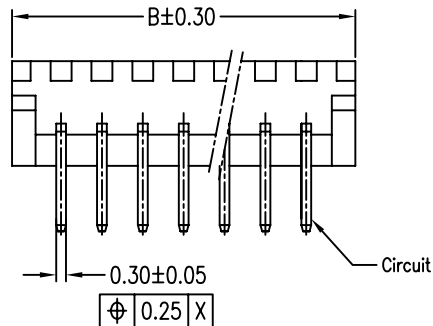
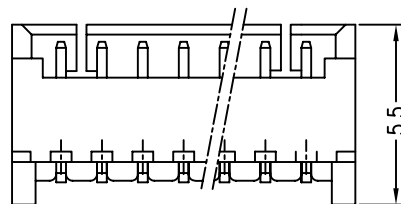
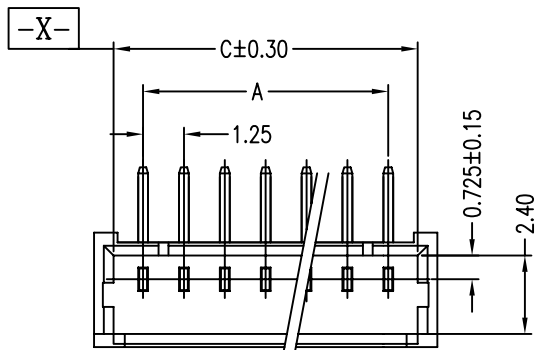
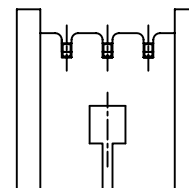




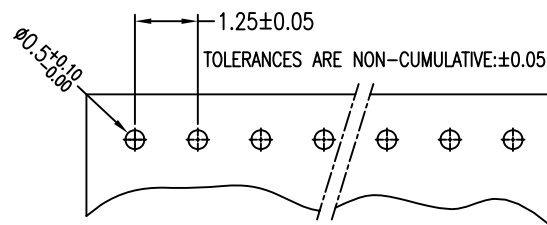
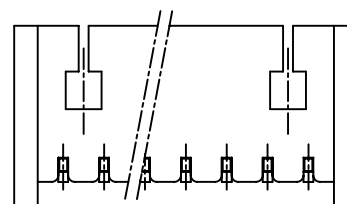
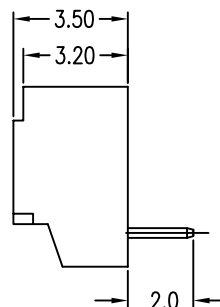
Copyright FCI.



2 POS



3 POS



P.C. BOARD LAYOUT
(PCB THK=0.8)

NOTES:

1. SPECIFICATIONS

Current Rating: 1A AC,DC
Voltage Rating: 125V AC,DC
Temperature Range: -40°C ~ +105°C
Contact Resistance: 20mΩ Max.
Insulation Resistance: 100MΩ Min.
Withstanding Voltage: 500V AC/minute

2. Material & finish:

Housing: Natural Thermoplastic, UL94V-0
Contact and metal hold-down: Phosphor Bronze
Plating of contact: Matte Tin or gold plating over Nickel

3. Crimping application hand tool P/N: 10118656-1000

4. Ordering Information & Dimensions:




10114831- X X X XX LF

Material: LCP
1: LCP
Plating: 0: Matte Tin
1: Gold Flash
2: 15u" Gold ON CONTACT AREA
3: 30u" Gold ON CONTACT AREA

LF: See note A
pin counts from 02~15
Packaging: 1: Tape & Reel

Part No.	Dimensions			
	POS	A	B	C
10114831-xxx02LF	2	1.25±0.10	4.25	3.05
10114831-xxx03LF	3	2.50±0.10	5.50	4.30
10114831-xxx04LF	4	3.75±0.10	6.75	5.55
10114831-xxx05LF	5	5.00±0.10	8.00	6.80
10114831-xxx06LF	6	6.25±0.15	9.25	8.05
10114831-xxx07LF	7	7.50±0.15	10.50	9.30
10114831-xxx08LF	8	8.75±0.15	11.75	10.55
10114831-xxx09LF	9	10.00±0.15	13.00	11.80
10114831-xxx10LF	10	11.25±0.20	14.25	13.05
10114831-xxx11LF	11	12.50±0.20	15.50	14.30
10114831-xxx12LF	12	13.75±0.20	16.75	15.55
10114831-xxx13LF	13	15.00±0.20	18.00	16.80
10114831-xxx14LF	14	16.25±0.20	19.25	18.05
10114831-xxx15LF	15	17.50±0.20	20.50	19.30

Note A: The LF means RoHS compliance, the housing will withstand exposure to peak temperature 260 degree C for 5 sec in the IR re-flow process.

www.fciconnect.com			surface 6.4 / ISO 1302 ✓		tolerance std ISO 406 ISO 1101		projection 		MM 		
			TOLERANCES UNLESS OTHERWISE SPECIFIED								
Dr	JASON HSU	12/1/10	ANGULAR	LINEAR	0.X	±0.25	size A4	Scale 1.000			
Eng	JASON HSU	12/1/10			0.XX	±0.15					
Chr	GARY HSIEH	12/1/10			0° ±2°	0.XXX					
Appr	JOSEPH HSIA	12/1/10	Product family WTB				Spec ref				
			title WTB 1.25MM WAFER 90° DIP				dwg no 10114831		Rev C		
			catalog no				CUSTOMER		sheet 1 of 1		

rev	ecn no	dr	date
A	T10-0145	J.H	12/1/10
B	ELX-N-011323	J.Z	2012-04-17
C	ELX-N-17285	TIM	03/24/14