

Illuminated pushbutton Ø 16 mm silver contact

82-4152.2113



<https://eao.com/p/82-4152.2113>

Your product:



82-4152.2113

Illuminated pushbutton Ø 16 mm silver contact

FRONT

Front bezel material:	Stainless steel
Front form:	round
Front dimension:	Ø 18 mm
Front bezel shape:	flush

MOUNTING

Mounting type:	Panel mounting
Mounting cut-out:	Ø 16 mm

OPERATING-/INDICATION PART

Shape of illumination:	Ring
Illumination colour:	Red
Lens optics:	opaque
Lens material:	Stainless steel
Lens shape:	flush
Lens colour:	Silver
Lens illumination:	illuminative

ELECTRICAL CHARACTERISTICS

Operation current:	7 mA
Electrical lifetime:	50 000 cycles of operation
Pollution degree:	2, according to EN IEC 60947-1

Switching voltage and switching current:

according to IEC 60947-5-1 (Silver contacts)	
Service categorie AC-15	
Voltage	Current
24 VAC	1 A
35 VAC	1 A (M12 versio
110 VAC	1 A
220 VAC	0.5 A
Switch rating DC service categorie DC-13 (Silver contacts)	
Voltage	Current
24 VDC	0.7 A
35 VDC	0.5 A (M12 vers
110 VDC	0.2 A
220 VDC	0.1 A

according to UL 508 (Silver contacts)

$\cos\phi$ 0,75 ... 0,8

Voltage	Current
120 VAC	5 A
240 VAC	3 A
24 VAC	1 A

Electric strength: 1500 VAC, 50 Hz 1 minute between life terminals and ground

Thermal current I_{th}: 5 A

Rated insulation voltage U_i: 250 V

Operating voltage: 12 V AC/DC

Contacts: 1 C

Rated Operational Voltage U_e: 250 VAC

MECHANICAL CHARACTERISTIC

Operating Travel: ca. 3 mm

Terminal: Screw terminal

Tightening torque: 0.5 ... 0.6 Nm, Screw terminal 0.1 Nm

Switching action: Maintained

Mechanical lifetime: 500 000 cycles of operation

Contact material: Silver

Switching system: Snap-action switching element

Weight: 0.018 kg

Operating force: 4 N ... 7 N

AMBIENT CONDITION

IP front protection: IP65, IP67

Operating temperature: – 30 °C ... + 70 °C

Climate resistance:

Storage temperature: $-40\text{ }^{\circ}\text{C} \dots +80\text{ }^{\circ}\text{C}$

Shock resistance: Max. 500 m / s² as per IEC 60068-2-27

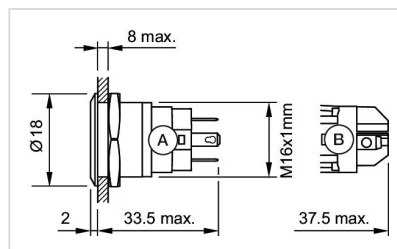
Approbations: CB, CCC, C UL, UL

Conformities: CE, 2011 / 65 / EC (RoHS), 2014 / 35 / EU (LVD)

OTHER

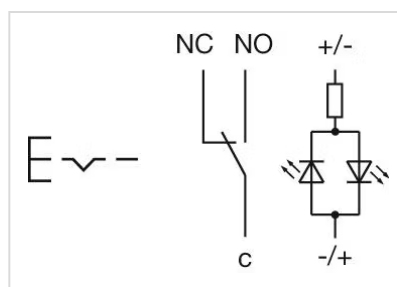
Kind of illumination: Single-LED

Dimension drawings:

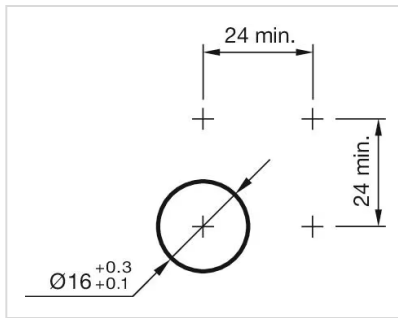


A = Solder terminal
B = Screw terminal

Wiring diagrams:



Mounting cut-outs:



Component layouts:

