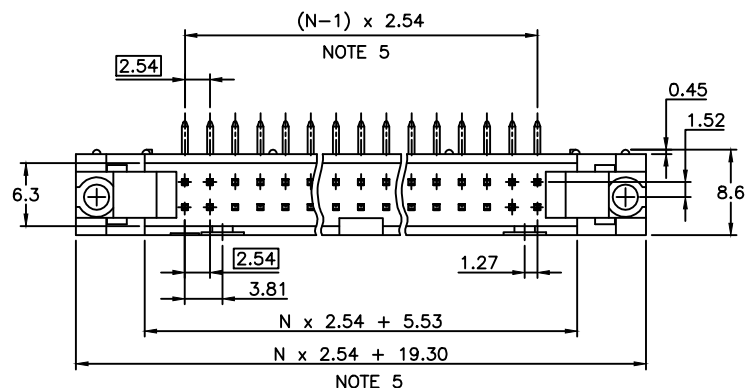


71922-YXXZLF

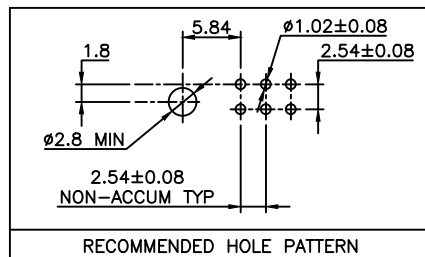
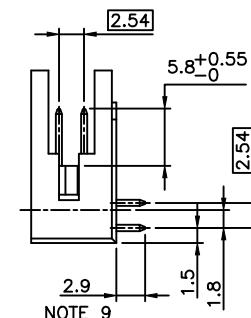
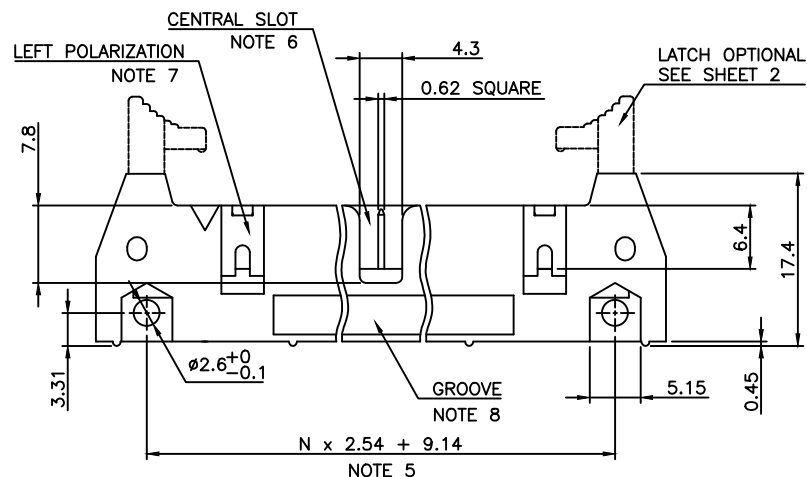
= STANDARD HOUSING COLOR GREY
(WITHOUT OPTIONAL LETTER)
B= OPTIONAL HOUSING COLOR BLACK
S= SPECIFIC CUSTOMER PLATING OPTION
HOUSING COLOR GREY



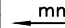
- LATCHING
 - 0= WITHOUT LATCH
 - 1= STANDARD LATCH
 - 2= LOW PROFILE LATCH



- 1 - HOUSING MAT'L : GLASS FILLED THERMOPLASTIC. UL94V-0
- 2 - PIN MATERIAL : PHOSPHOR BRONZE
- 3 - PRODUCT PACKAGED IN TUBES
- 4 - 40N MIN LATCH RETENTION FORCE AT FIRST EXTRACTION
- 5 - TO DETERMINE DIMENSIONS :
N = NUMBER OF POSITIONS PER ROW
EXAMPLE : 8 POS N x 2.54 = 20.32mm
- 6 - NO CENTRAL SLOT ON POSITIONS 6 & 8
- 7 - NO LEFT POLARIZATION ON POSITIONS 06, 08, 10, 14.
- 8 - NO GROOVE ON POSITIONS 06, 08, 10, 14, 30, 34
- 9 - 4.5mm SOLDER TAIL
ORDER 71922-4XX (WITH STANDARD LATCH ONLY)
ORDER 71922-5XX (WITH LOW PROFILE LATCH ONLY)
- 10 - RoHS COMPATIBLE PRODUCT SPECIFICATIONS

- a - PLATING:
 - "LF" MEANS THE PRODUCT IS LEAD-FREE, 2μm MINIMUM MATTE TIN OVER 1.27μm MINIMUM NICKEL UNDERPLATE.
- b - MANUFACTURING PROCESS COMPATIBILITY
 - THE HOUSING WILL WITHSTAND EXPOSURE TO 260°C ±5°C SOLDER BATH TEMPERATURE FOR 5 SECONDS IN A WAVE SOLDER APPLICATION WITH A 1.6mm MIN THICK CIRCUIT BOARD.
- c - LABELING:
 - MEETS PACKAGING SPECS AS PER GS-14-920
- d - LEGAL STATEMENT: SEE GS-47-0004.

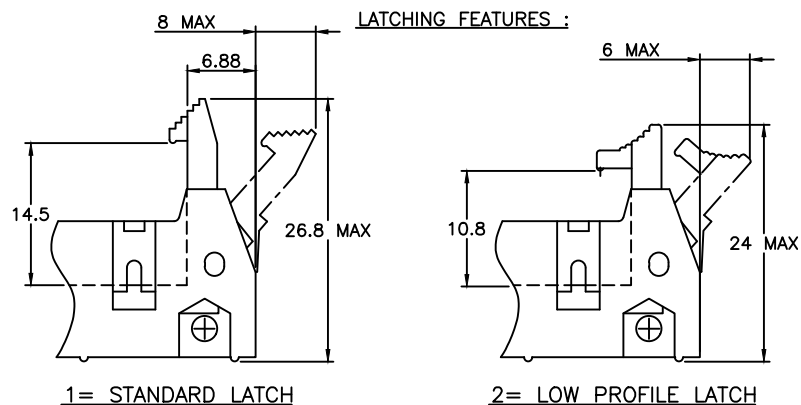
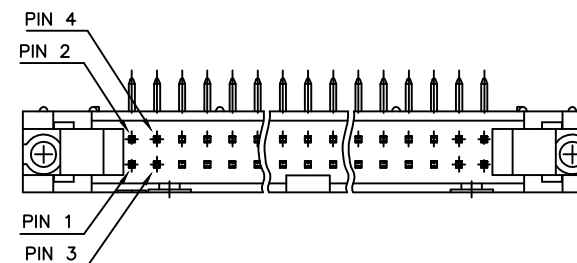


mat'l. code SEE NOTES				surface ISO 1302 ✓		tolerance ISO 406 ISO 1101		projection 		product family QUICKIE			
ltr	ecn no	dr	date	tolerances unless otherwise specified		XX ±0.3				title SHR.EL.HEADER RA DR TMT			
V	F10-0054	LMU	10.05.19	angles	linear	.XX ±0.13							
W	B-16776	LMU	01.14.23			.XXX ±0.05							
X	B-18018	JCO	14.06.19										
Y	B-18236	LMU	14.07.08	dr	D.LE	01.01.24			dwg no		sheet 1 of 2	size	
AA	B-19092	LMU	14.10.16	engr	JM.C	01.01.24			71922		A3		
				chr	JF.N	01.01.24							
U	F08-0146	YOY	08.04.11	appd	JM.C	01.01.24			type		CUSTOMER Drawing		
sheet index	revision sheet	AA	S	1	2								

PRODUCT NUMBER	SIZE	LATCHING AVAILABILITY	MISSING PIN POSITIONS
71922-X06(B)LF	2x3	0/1/2	
71922-X08(B)LF	2x4	0/1/2	
71922-X10(B)LF	2x5	0/1/2	
71922-X14(B)LF	2x7	0/1/2	
71922-X16(B)LF	2x8	0/1/2	
71922-X18(B)LF	2x9	0/1/2	
71922-X20(B)LF	2x10	0/1/2	
71922-X26(B)LF	2x13	0/1/2	
71922-X28(B)LF	2x13	0/1/2	PIN 5 & 12
71922-X30(B)LF	2x15	0/1/2	
71922-X34(B)LF	2x17	0/1/2	
71922-X35(B)LF	2x17	0/1/2	PIN 2 & 3
71922-X39(B)LF	2x20	0/1/2	PIN 20
71922-X40(B)LF	2x20	0/1/2	
71922-X44(B)LF	2x22	0/1/2	
71922-X50(B)LF	2x25	0/1/2	
71922-X60(B)LF	2x30	0/1/2	
71922-X64(B)LF	2x32	0/1/2	

PLATING :

- 0.76µm GOLD/GXT
(PdNi WITH GOLD FLASH) ON CONTACT AREA
- 2µm MIN MATTE TIN ON TAIL
- UNDERPLATE : 1.27µm Ni MIN



mat'l. code				surface	tolerance	projection	product family
				ISO 1302	ISO 406 ISO 1101		QUICKIE
ltr	ecn no	dr	date	tolerances unless otherwise specified			title
M	F06-0229	LMU	06.07.17	angles	linear	mm	SHR.EL.HEADER
N	F07-0195	LMU	07.05.25				RA DR TMT
P	F08-0146	YOV	08.04.11			scale 2:1	
R	B-16776	LMU	14.01.23	dr	D.LE	01.01.24	dwg no
S	B-19092	LMU	14.10.16	enrg	JM.C	01.01.24	71922
L	F04-0389	JCO	04.12.21	appd	JF.N	01.01.24	type
sheet	revision						CUSTOMER Drawing
index	sheet						