

Pushbutton Ø 16 mm silver contact

82-4172.1000



<https://eao.com/p/82-4172.1000>

Your product:



82-4172.1000

Pushbutton Ø 16 mm silver contact

FRONT

Front dimension:	Ø 18 mm
Front bezel material:	Stainless steel
Front form:	round
Front bezel shape:	flush

MOUNTING

Mounting type:	Panel mounting
Mounting cut-out:	Ø 16 mm

OPERATING-/INDICATION PART

Lens optics:	opaque
Lens illumination:	non illuminative
Lens material:	Stainless steel
Lens colour:	Silver
Lens shape:	convex

ELECTRICAL CHARACTERISTICS

Contacts:	1 C
Rated insulation voltage Ui:	250 V
Switching voltage and switching current:	

according to IEC 60947-5-1 (Silver contacts)	
Service categorie AC-15	
Voltage	Current
24 VAC	1 A
35 VAC	1 A (M12 version)
110 VAC	1 A
220 VAC	0.5 A
Switch rating DC service categorie DC-13 (Silver contacts)	
Voltage	Current
24 VDC	0.7 A
35 VDC	0.5 A (M12 version)
110 VDC	0.2 A
220 VDC	0.1 A

according to UL 508 (Silver contacts)	
cosφ 0,75 ... 0,8	
Voltage	Current
120 VAC	5 A
240 VAC	3 A
24 VAC	1 A

Pollution degree:	2, according to EN IEC 60947-1
Electric strength:	1500 VAC, 50 Hz 1 minute between life terminals and ground
Electrical lifetime:	50 000 cycles of operation
Rated Operational Voltage Ue:	250 VAC
Thermal current Ith:	5 A

MECHANICAL CHARATERISTIC

Switching action:	Momentary
Terminal:	Screw terminal
Weight:	0.019 kg
Mechanical lifetime:	1 Mio. cycles of operation
Operating Travel:	ca. 3 mm
Operating force:	4 N ... 7 N
Switching system:	Snap-action switching element
Contact material:	Silver
Tightening torque:	0.5 ... 0.6 Nm, Screw terminal 0.1 Nm

AMBIENT CONDITION

Storage temperature:	– 40 °C ... + 80 °C
Operating temperature:	– 30 °C ... + 70 °C
Vibration resistance:	10 ... 500 Hz, amplitude 1.5 mm p-p according to IEC 60068-2-6
Climate resistance:	

Damp heat, 21 days according to IEC 60512-11

Shock resistance: Max. 500 m / s² as per IEC 60068-2-27

IP front protection: IP65, IP67

CERTIFICATE

Conformities: CE, 2011 / 65 / EC (RoHS), 2014 / 35 / EU (LVD)

Approbations: CB, CCC, C UL, UL

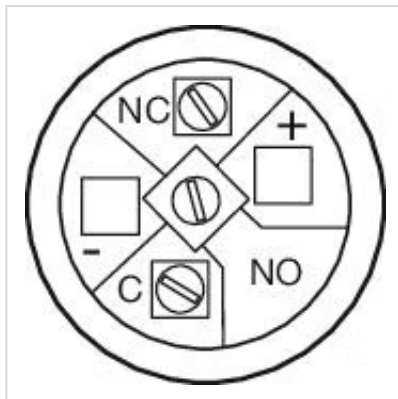
REACH: REACH compliant

RoHS: RoHS compliant

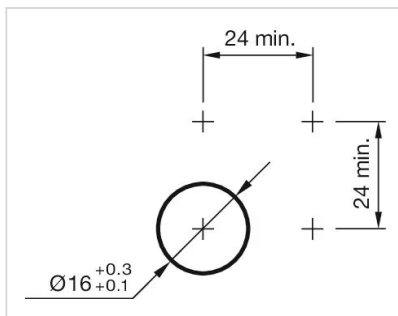
OTHER

Short Description: Pushbutton Ø 16 mm silver contact, Momentary, 1 C, Screw terminal, round, Stainless steel, Silver

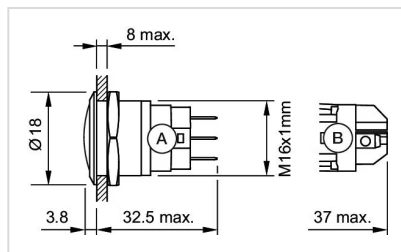
Component layouts:



Mounting cut-outs:



Dimension drawings:



A = Solder terminal
B = Screw terminal

Wiring diagrams:

