

DO NOT  
SCALE FROM  
THIS PRINT

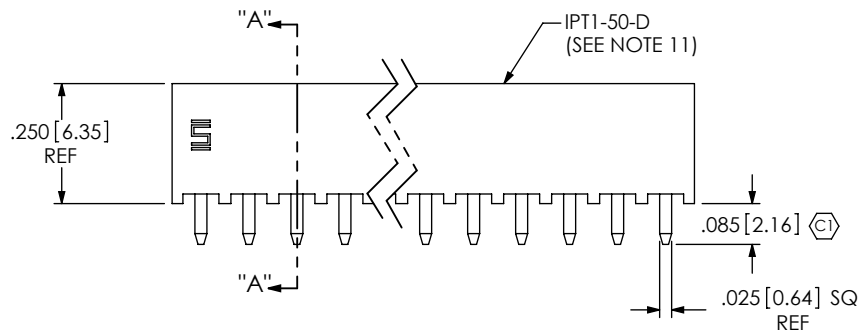
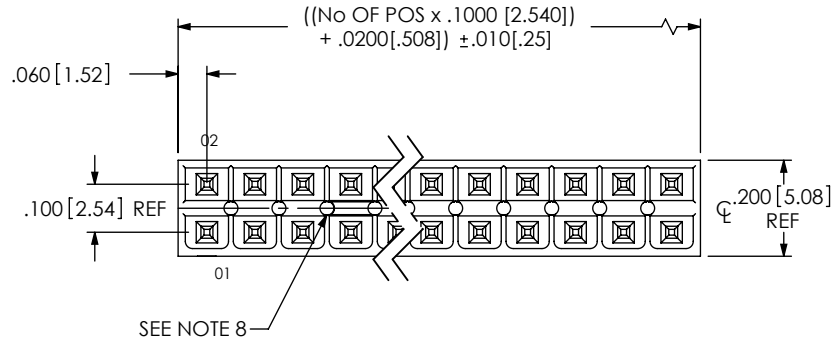


FIG 1  
(IPT1-125-01-XX-D-XXX SHOWN)

# IPT1-1XX-XX-XX-D-XX

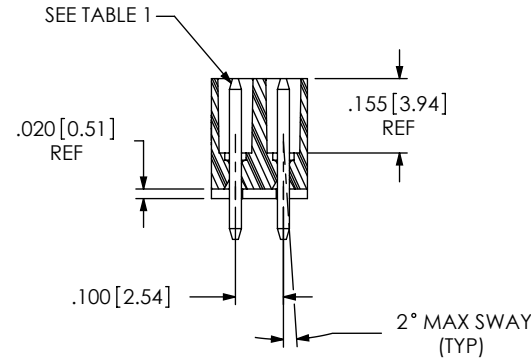
No OF POS PER ROW  
-02 THRU -25

LEAD STYLE  
SEE TABLE 1, SHEET 2

OPTION  
(SEE NOTE 11)  
-PL: POSITION #1 REMOVED  
(USE IPT1-XX-D-P)  
(SEE NOTE 12)  
-FL: FRICTION LOCK [POS -05 THRU -25]  
(USE IPT1-XX-D-FL-X & T-1S64-XX-X)

ROW SPECIFICATION  
(SEE NOTE 11)  
-D: DOUBLE (USE IPT1-XX-D-XX-X)

PLATING SPECIFICATION  
-S: SELECTIVE, 30 Au / 50 Ni MIN ON CONTACT,  
MATTE TIN TAIL  
-SM: SELECTIVE, 30 Au / 50 Ni MIN ON CONTACT,  
MATTE TIN TAIL  
-L: LIGHT SELECTIVE, 10 Au / 50 Ni MIN ON CONTACT,  
MATTE TIN TAIL



## NOTES:

## SECTION "A"-"A"

1.  $\text{C}$  REPRESENTS A CRITICAL DIMENSION.
2. MAXIMUM ALLOWABLE CUT FLASH: .010 [.25].
3. MINIMUM TERMINAL PUSH OUT FORCE: 2 lbs.
4. MAXIMUM VARIATION BETWEEN PIN ROWS: .005 [.13].
5. "END WALLS" AFTER CUTTING SHOULD BE .015+/- .003 [.38+/- .08].
6. PARTS TO BE BULK PACKAGED.
7. ALL DIMENSIONS TO BE ABOUT CENTERLINE WITHIN +/- .005 [.13].
8. PRESENCE OF VOIDS IS OPTIONAL AND PATTERN TO WHICH THEY OCCUR IS VARIABLE.
9. -T PLATING OPTION AVAILABLE FOR EXISTING CUSTOMERS ONLY.
10. NOTE DELETED.
11. STANDARD BODIES CAN BE CUT TO POSITION.  
FOR -PL & -FL OPTIONS, BODIES MUST BE MOLDED TO POSITION.
12. FOR EXISTING CUSTOMERS ONLY, -POL CAN BE SUBSTITUED FOR -PL.

UNLESS OTHERWISE SPECIFIED,  
DIMENSIONS ARE IN INCHES.  
TOLERANCES ARE:  
DECIMALS ANGLES  
.XX: ±.01 [.3] ± 2°  
.XXX: ±.005 [.13]  
.XXXX: ±.0020 [.051]

PROPRIETARY NOTE  
THIS DOCUMENT CONTAINS INFORMATION  
CONFIDENTIAL AND PROPRIETARY TO  
SAMTEC, INC. AND SHALL NOT BE REPRODUCED  
OR TRANSFERRED TO OTHER DOCUMENTS OR  
DISCLOSED TO OTHERS OR USED FOR ANY  
PURPOSE OTHER THAN THAT WHICH IT WAS  
OBTAINED WITHOUT THE EXPRESSED WRITTEN  
CONSENT OF SAMTEC, INC.

**samtec**

520 PARK EAST BLVD, NEW ALBANY, IN 47150  
PHONE: 812-944-6733 FAX: 812-948-5047  
e-Mail: info@SAMTEC.com code 55322

MATERIAL: DO NOT SCALE DRAWING SHEET SCALE: 1:0.4  
INSULATOR: LCP, UL 94 VO, COLOR: BLACK  
CONTACT: PHOS BRONZE, 510, 3/4 HARD

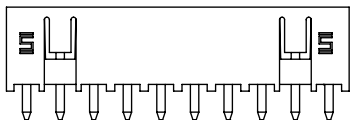
DESCRIPTION:  
.100 DOUBLE ROW SHROUDED TERMINAL ASSEMBLY

DWG. NO.  
IPT1-1XX-XX-XX-D-XX

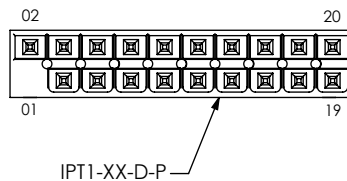
BY: DEAN P 11-05-2002 SHEET 1 OF 2

c:\enterprisvault\DWG\MISC\MKTG\IPT1-1XX-XX-XX-D-XX-MKT.SLDRW

-FL: FRICTION LOCK OPTION  
(IPT1-110-01-X-D-FL SHOWN)



-PL: POLARIZED OPTION  
(IPT1-110-01-X-D-PL SHOWN)



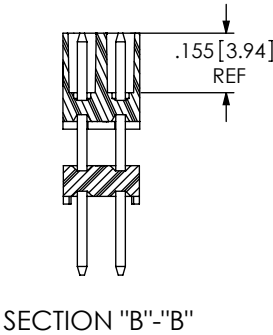
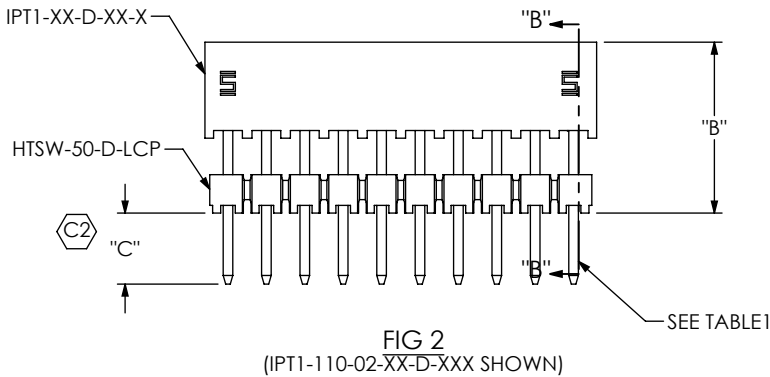



TABLE 1		BOARD STACK HEIGHT WHEN MATED WITH IPS1	TERMINAL	"C"
LEADSTYLE	"B"			
-01	N/A	N/A	T-1S6-21-X2	
-02	.366[9.30]	.551[14.00]	T-1S6-26-X2	.104[2.64]
-03	.445[11.30]	.630[16.00]	T-1S6-08-X2	.085[2.16]
-04	.484[12.30]	.669[17.00]	T-1S6-24-X2	.106[2.69]
-05	.563[14.30]	.748[19.00]	T-1S6-27-X2	.097[2.46]
-06	.602[15.30]	.787[20.00]	T-1S6-23-X2	.093[2.35]
-07	.799[20.30]	.984[25.00]	T-1S6-28-X2	.091[2.31]
-08	.996[25.30]	1.181[30.00]	T-1S6-29-X2	.094[2.39]
-09	1.193[30.30]	1.378[35.00]	T-1S6-30-X2	.097[2.46]

<p>PROPRIETARY NOTE</p> <p>THIS DOCUMENT CONTAINS INFORMATION CONFIDENTIAL AND PROPRIETARY TO SAMTEC, INC. AND SHALL NOT BE REPRODUCED OR TRANSFERRED TO OTHER DOCUMENTS OR DISCLOSED TO OTHERS OR USED FOR ANY PURPOSE OTHER THAN THAT WHICH IT WAS OBTAINED WITHOUT THE EXPRESSED WRITTEN CONSENT OF SAMTEC, INC.</p> <p>DO NOT SCALE DRAWING</p> <p>SHEET SCALE: 2:1</p>	 <p>520 PARK EAST BLVD, NEW ALBANY, IN 47150 PHONE: 812-944-6733 FAX: 812-948-5047 e-Mail info@SAMTEC.com code 55322</p>	
	DESCRIPTION: .100 DOUBLE ROW SHROUDED TERMINAL ASSEMBLY	
	DWG. NO. IPT1-1XX-XX-XX-D-XX	
	BY: DEAN P	11-05-2002