

Illuminated pushbutton Ø 22 mm stainless steel 304, with symbol

82-6151.2AA4.B001



<https://eao.com/p/82-6151.2AA4.B001>

Your product:



82-6151.2AA4.B001

Illuminated pushbutton Ø 22 mm
stainless steel 304, with symbol

FRONT

Front bezel shape:	flush
Front dimension:	Ø 25 mm
Front bezel material:	Stainless steel
Front form:	round

MOUNTING

Mounting cut-out:	Ø 22 mm
Mounting type:	Panel mounting

OPERATING-/INDICATION PART

Illumination colour:	Red/Green
Symbol:	ON/OFF
Shape of illumination:	Symbol
Lens shape:	flush
Lens illumination:	illuminative
Lens colour:	Silver
Lens material:	Plastic metalised
Lens optics:	opaque

ELECTRICAL CHARACTERISTICS

Operating voltage:	24 V DC
Electric strength:	1500 VAC, 50 Hz 1 minute between life terminals and ground

Rated Operational Voltage Ue:	250 VAC		
Operation current:	7 mA		
Switching voltage and switching current:	according to IEC 60947-5-1 (Silver contacts) Service categorie AC-15 Voltage 24 VAC 35 VAC 110 VAC 220 VAC Switch rating DC service categorie DC-13 (Silver contacts) Voltage 24 VDC 35 VDC 110 VDC 220 VDC	Current 1 A 1 A (M12 versio 1 A 0.5 A Current 0.7 A 0.5 A (M12 vers 0.2 A 0.1 A	
	according to UL 508 (Silver contacts) cosφ 0,75 ... 0,8 Voltage 120 VAC 240 VAC 24 VAC	Current 5 A 3 A 1 A	
Pollution degree:	2, according to EN IEC 60947-1		
Electrical lifetime:	50 000 cycles of operation		
Contacts:	1 C		
Rated insulation voltage Ui:	250 V		
Thermal current Ith:	5 A		

MECHANICAL CHARACTERISTIC

Contact material:	Silver
Terminal:	Soldering terminal, 2.8 x 0.5 mm
Weight:	0.025 kg
Operating Travel:	ca. 3 mm
Mechanical lifetime:	500 000 cycles of operation
Operating force:	4 N ... 7 N
Tightening torque:	0.5 ... 0.6 Nm
Switching action:	Maintained
Switching system:	Snap-action switching element

AMBIENT CONDITION

Storage temperature:	– 40 °C ... + 80 °C
Operating temperature:	

– 30 °C ... + 70 °C

Vibration resistance:

10 ... 500 Hz, amplitude 1.5 mm p-p according to IEC 60068-2-6

IP front protection:

IP65, IP67

Shock resistance:

Max. 500 m / s² as per IEC 60068-2-27

Climate resistance:

Damp heat, 21 days according to IEC 60512-11

CERTIFICATE

Approbations:

CB, CCC, C UL, UL

RoHS:

RoHS compliant

REACH:

REACH compliant

Conformities:

CE, 2011 / 65 / EC (RoHS), 2014 / 35 / EU (LVD)

OTHER

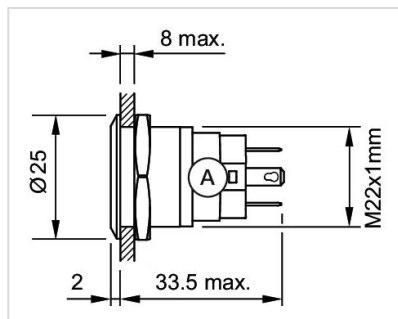
Short Description:

Illuminated pushbutton Ø 22 mm stainless steel 304, with symbol, Maintained, 24 V DC, 1 C, Soldering terminal, 2.8 x 0.5 mm, round, Stainless steel, Red/Green, ON/OFF, Silver

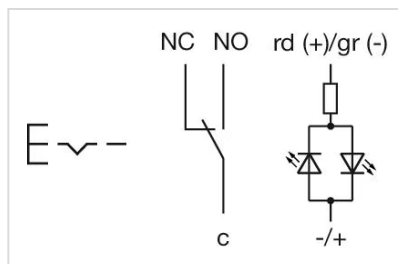
Kind of illumination:

Bi-colour-LED

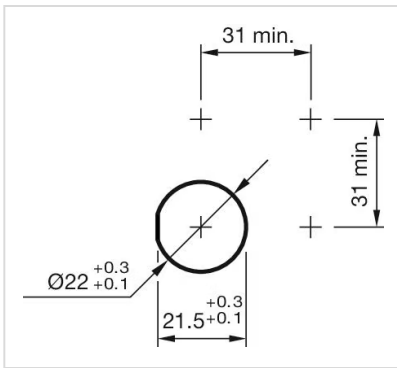
Dimension drawings:



Wiring diagrams:



Mounting cut-outs:



Component layouts:

