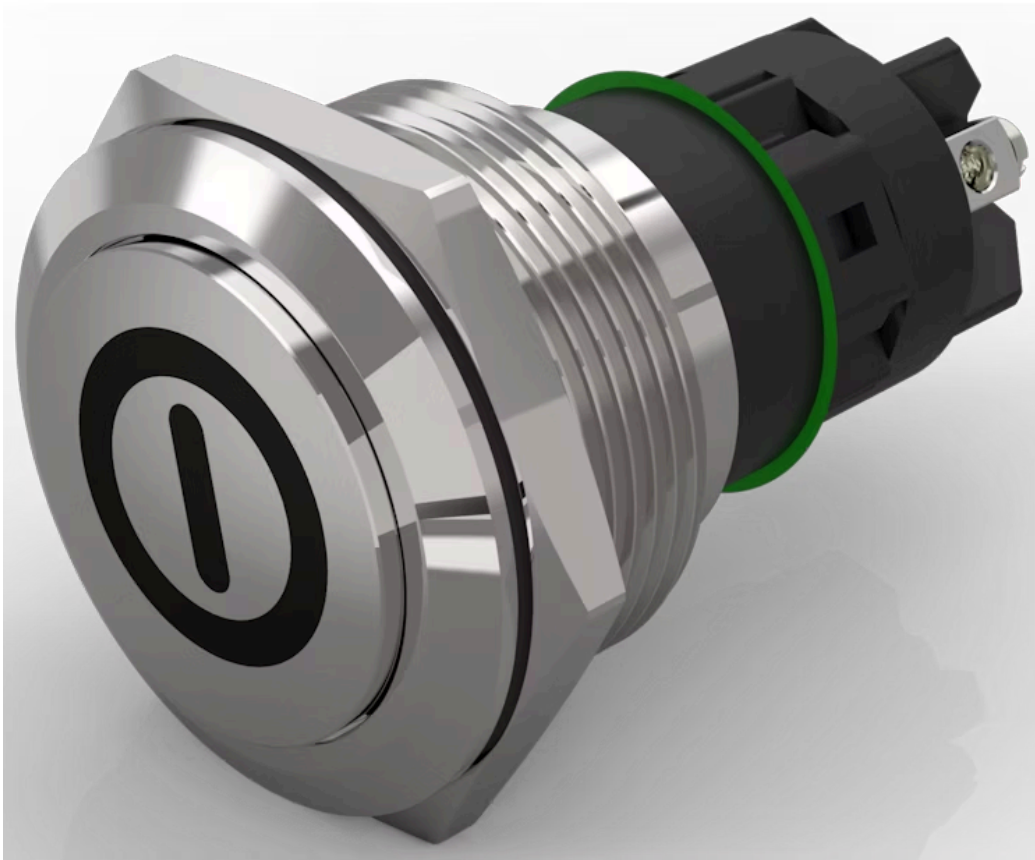


Pushbutton Ø 22 mm silver contact

82-6162.1000.B001



<https://eao.com/p/82-6162.1000.B001>

Your product:



82-6162.1000.B001

Pushbutton Ø 22 mm silver contact

FRONT

| | |
|-----------------------|-----------------|
| Front bezel shape: | flush |
| Front bezel material: | Stainless steel |
| Front form: | round |
| Front dimension: | Ø 25 mm |

MOUNTING

| | |
|-------------------|----------------|
| Mounting cut-out: | Ø 22 mm |
| Mounting type: | Panel mounting |

OPERATING-/INDICATION PART

| | |
|--------------------|------------------|
| Lens shape: | flush |
| Lens optics: | opaque |
| Lens illumination: | non illuminative |
| Lens material: | Stainless steel |
| Symbol: | ON/OFF |
| Lens colour: | Silver |

ELECTRICAL CHARACTERISTICS

| | |
|------------------------------------------|---------|
| Rated Operational Voltage Ue: | 250 VAC |
| Switching voltage and switching current: | |

| | |
|------------------------------------------------------------|---------------------|
| according to IEC 60947-5-1 (Silver contacts) | |
| Service categorie AC-15 | |
| Voltage | Current |
| 24 VAC | 1 A |
| 35 VAC | 1 A (M12 version) |
| 110 VAC | 1 A |
| 220 VAC | 0.5 A |
| Switch rating DC service categorie DC-13 (Silver contacts) | |
| Voltage | Current |
| 24 VDC | 0.7 A |
| 35 VDC | 0.5 A (M12 version) |
| 110 VDC | 0.2 A |
| 220 VDC | 0.1 A |

| | |
|---------------------------------------|---------|
| according to UL 508 (Silver contacts) | |
| cosφ 0,75 ... 0,8 | |
| Voltage | Current |
| 120 VAC | 5 A |
| 240 VAC | 3 A |
| 24 VAC | 1 A |

| | |
|-------------------------------------|------------------------------------------------------------|
| Electrical lifetime: | 50 000 cycles of operation |
| Pollution degree: | 2, according to EN IEC 60947-1 |
| Thermal current Ith: | 5 A |
| Rated insulation voltage Ui: | 250 V |
| Electric strength: | 1500 VAC, 50 Hz 1 minute between life terminals and ground |
| Contacts: | 1 C |

MECHANICAL CHARATERISTIC

| | |
|-----------------------------|---------------------------------------|
| Switching action: | Momentary |
| Contact material: | Silver |
| Tightening torque: | 0.5 ... 0.6 Nm, Screw terminal 0.1 Nm |
| Weight: | 0.02 kg |
| Terminal: | Screw terminal |
| Switching system: | Snap-action switching element |
| Operating Travel: | ca. 3 mm |
| Mechanical lifetime: | 1 Mio. cycles of operation |
| Operating force: | 4 N ... 7 N |

AMBIENT CONDITION

| | |
|-------------------------------|---------------------------------------------------|
| IP front protection: | IP65, IP67 |
| Shock resistance: | Max. 500 m / s ² as per IEC 60068-2-27 |
| Operating temperature: | |

– 30 °C ... + 70 °C

Vibration resistance: 10 ... 500 Hz, amplitude 1.5 mm p-p according to IEC 60068-2-6

Storage temperature: – 40 °C ... + 80 °C

Climate resistance: Damp heat, 21 days according to IEC 60512-11

CERTIFICATE

RoHS: RoHS compliant

Conformities: CE, 2011 / 65 / EC (RoHS), 2014 / 35 / EU (LVD)

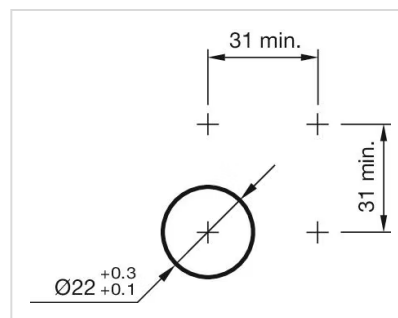
REACH: REACH compliant

Approbations: CB, CCC, C UL, UL

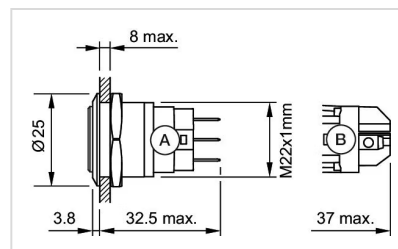
OTHER

Short Description: Pushbutton Ø 22 mm silver contact, Momentary, 1 C, Screw terminal, round, Stainless steel, ON/OFF, Silver

Mounting cut-outs:

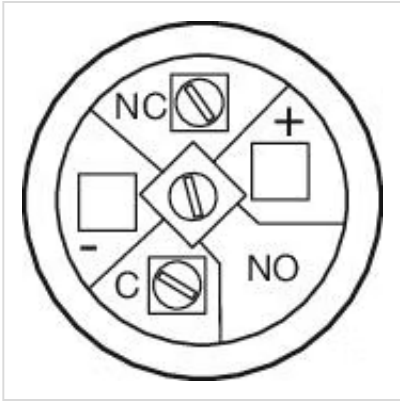


Dimension drawings:



A = Solder terminal
B = Screw terminal

Component layouts:



Wiring diagrams:

