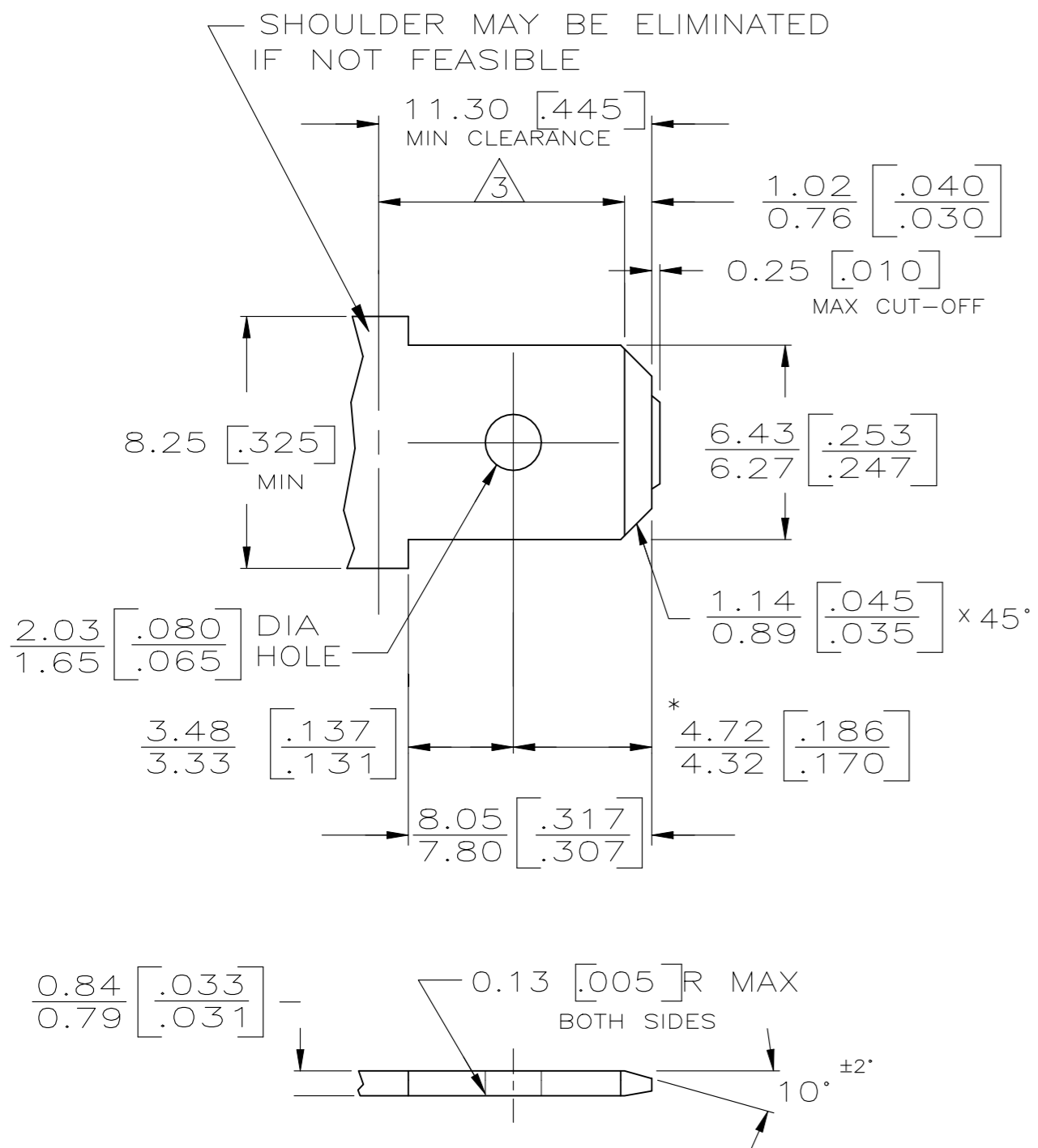


THIS DRAWING IS UNPUBLISHED. RELEASED FOR PUBLICATION. ALL RIGHTS RESERVED.

LOC	DIST	REVISIONS					
		P	LTR	DESCRIPTION	DATE	DWN	APVD
G	01	S		REVISED PER ECR-20-100918	15FEB2020	PC	AF
		S1		REVISED PER ECR-21-109740	18AUG2021	BDA	AF

# SUGGESTED MATING TAB



1 - MATL: 1/2H BRASS OR NICKEL PL STEEL.

2 - NO BURRS PERMISSIBLE AT HOLE.

3 - MUST BE FLAT WITHIN 0.076 [.003] OVER THIS LENGTH.

4 - TIN PLATING IS REQUIRED ON BRASS WHEN TERMINAL TEMP. IS OVER 225°F

5 - HOLE MUST BE SYMMETRICAL ABOUT TAB Q WITHIN 0.076 [.003] \* TO BE USED ONLY WHEN SHOULDER IS ELIMINATED.

1 FOR USE WITH MKII POSITIVE LOCK, LOW INSERTION FORCE FASTON RECEPTACLES AND MOST BUDGET FASTON RECEPTACLES.

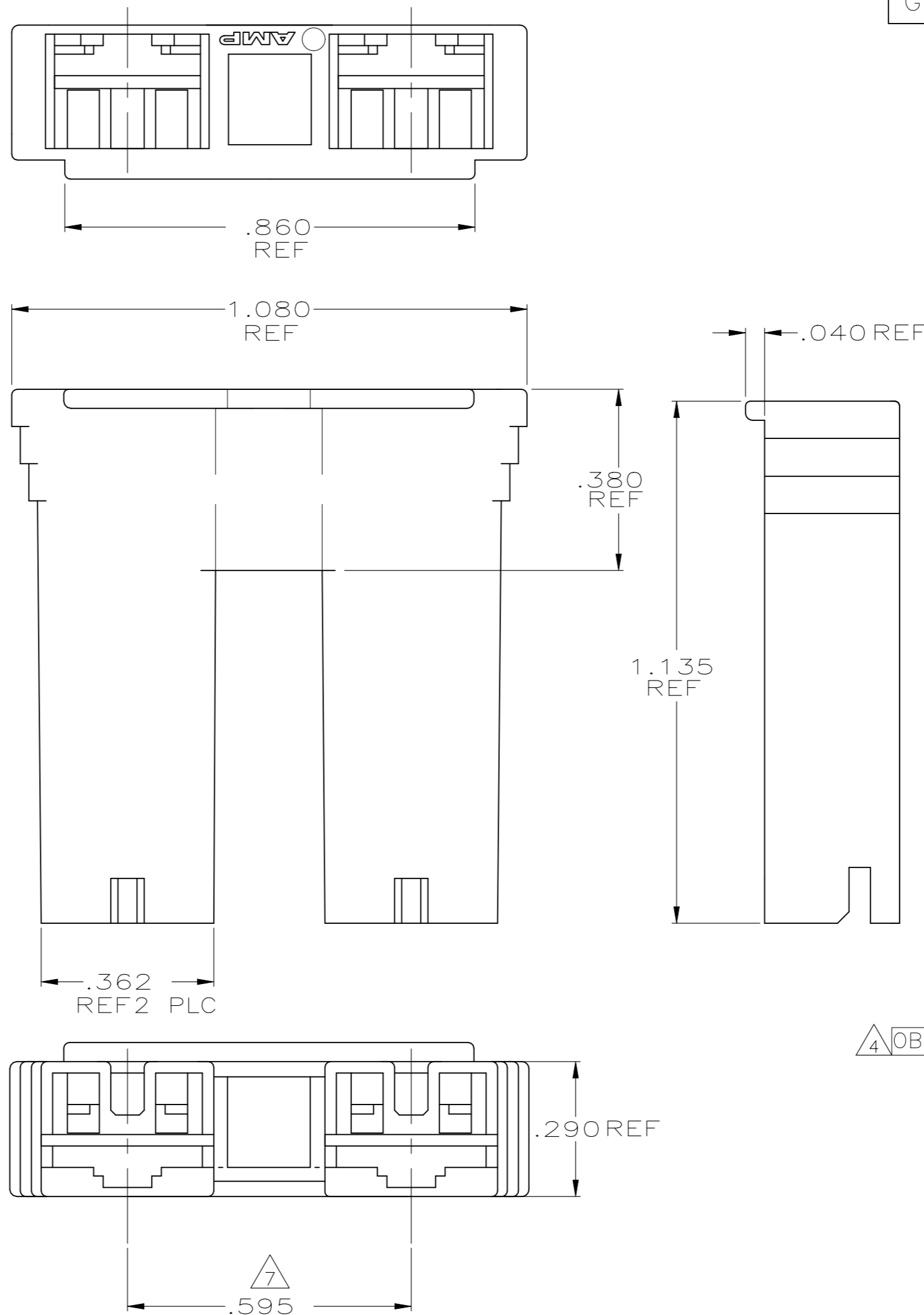
2 PRELIMINARY - NOT FOR PRODUCTION

3 PREPRODUCTION - FASR REQUIRED

4 OBSOLETE PARTS: OBSOLETE CIS STREAMLINING PER D.RENAUD/D.SINISI

5 HOUSING IS MOLDED FROM A MATERIAL THAT MEETS MINIMUM GLOW WIRE FLAMMABILITY INDEX OF 850°C PER IEC 60695-2-12 AND MINIMUM GLOW WIRE IGNITION TEMPERATURE OF 775°C PER IEC 60695-2-13.

6 HOUSING TESTED TO IEC 60695-2-11 FOR NYLON, GLOW-WIRE FLAMMABILITY TEST METHOD FOR END-PRODUCTS (GWEPT) 750°C.



7 DIMENSION IS BETWEEN CENTERLINES OF INSIDE CORE WIDTHS.

66 NYLON, 130°C V0 BLUE	4-520935-3
66 NYLON, 130°C V0 RED	4-520935-2
66 NYLON, 130°C V0 NATURAL	4-520935-1
NYLON, 130°C V0 GREEN	1-520935-4
6 NYLON V0, NATURAL	2-520935-4
66 NYLON V0, NATURAL	2-520935-3
6 NYLON V2 RED	2-520935-2
6 NYLON V2 NATURAL	2-520935-1
V0 GREEN	1-520935-9
NYLON, 130°C, V0 BLACK	1-520935-8
NYLON, 130°C, V0 BROWN/TAN	1-520935-7
NYLON, 130°C, V0 YELLOW	1-520935-6
NYLON, 130°C, V0 BLUE	1-520935-5
NYLON, 130°C, V0 RED	1-520935-2
NYLON, 130°C, V0 NATURAL	1-520935-1
66 NYLON, 120°C V0 WEATHER RESIST BLACK	520935-9
BLACK	520935-8
BROWN	520935-7
YELLOW	520935-6
BLUE	520935-5
GREEN	520935-4
WEATHER RESIST BLACK	520935-3
RED	520935-2
NATURAL	520935-1
COLOR	PART NO

THIS DRAWING IS A CONTROLLED DOCUMENT.		DWN	JR RUTH	4/14/88	 TE Connectivity
DIMENSIONS: INCHES		CHK	M FEHER	4/14/88	
TOLERANCES UNLESS OTHERWISE SPECIFIED:		APVD	R KUZO	4/14/88	
0 PLC ± - 1 PLC ± - 2 PLC ± - 3 PLC ± .010 4 PLC ± - ANGLES ± -		PRODUCT SPEC	NAME		
MATERIAL	6/6 NYLON	FINISH	SEE TABLE		APPLICATION SPEC
WEIGHT		SCALE		4:1	SHEET
CUSTOMER DRAWING		CAGE CODE		A2 00779	DRAWING NO
SCALE		SHEET		1 OF 1	REV
SHEET		REV		S1	RESTRICTED TO

# Mouser Electronics

Authorized Distributor

Click to View Pricing, Inventory, Delivery & Lifecycle Information:

[TE Connectivity:](#)

[4-520935-3](#)