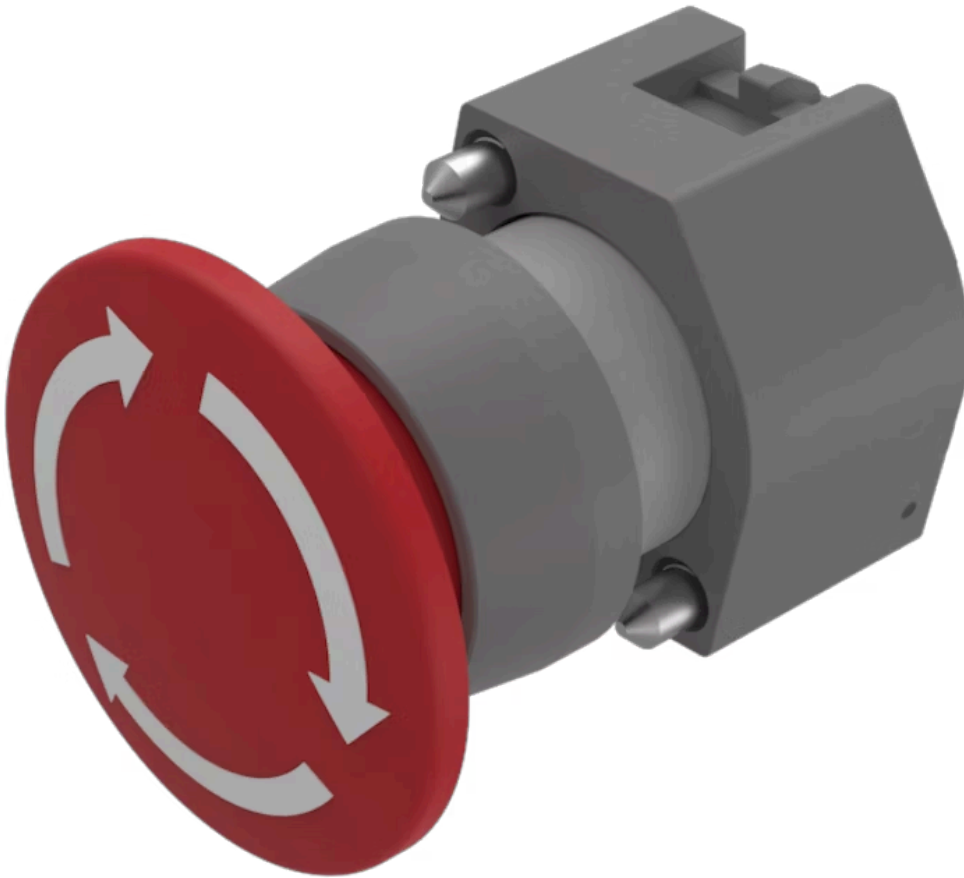


Actuator

704.074.2



<https://eao.com/p/704.074.2>

Your product:



704.074.2 Actuator

FRONT

Front bezel colour:	Grey
Front form:	round
Front bezel material:	Plastic
Front dimension:	Ø 40 mm

MOUNTING

Mounting type:	Panel mounting
Design:	raised

OPERATING-/INDICATION PART

Lens material:	Plastic
Lens shape:	mushroom-head
Lens illumination:	non illuminative
Lens colour:	Red
Lens optics:	opaque

ELECTRICAL CHARACTERISTICS

Standards:	The switches comply with the "Standards for low-voltage switching devices" DIN EN 60947-1
------------	---

MECHANICAL CHARACTERISTIC

Operating force:	8 N
Weight:	0.047 kg

Operating Travel:	ca. 5.8 mm ± 0.2 mm
Switching action:	Maintained
Mechanical lifetime:	≤50 000 cycles of operation

AMBIENT CONDITION

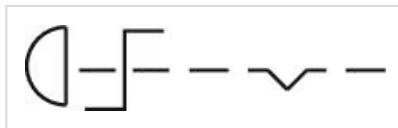
Operating temperature:	– 40 °C ... + 55 °C
Storage temperature:	– 40 °C ... + 85 °C
IP Protection:	IP65 front side

CERTIFICATE

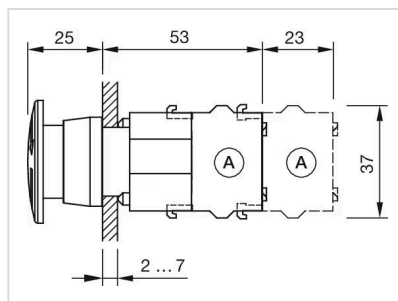
REACH:	REACH compliant
RoHS:	RoHS compliant

OTHER

max. number of switching elements:	3
Short Description:	Actuator, Ø 40 mm, mushroom-head, non illuminative, Red, Plastic, opaque, round, Grey, Plastic, Maintained
Housing colour:	Grey
Marking:	Arrows
Housing material:	Plastic
Wiring diagrams:	

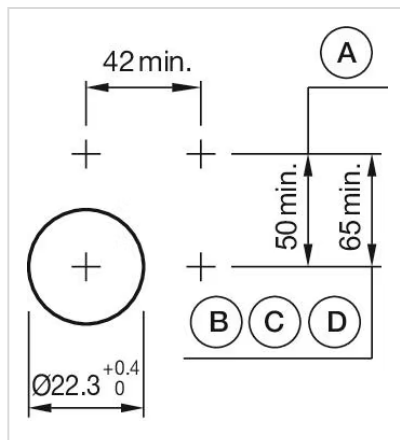


Dimension drawings:



A = Screw terminal

Mounting cut-outs:



- A = Screw terminal
- B = Push-in terminal (PIT)
- C = Plug-in terminal 6.3 mm x 0.8 mm
- D = Double plug-in terminal 6.3 mm x 0.8 mm