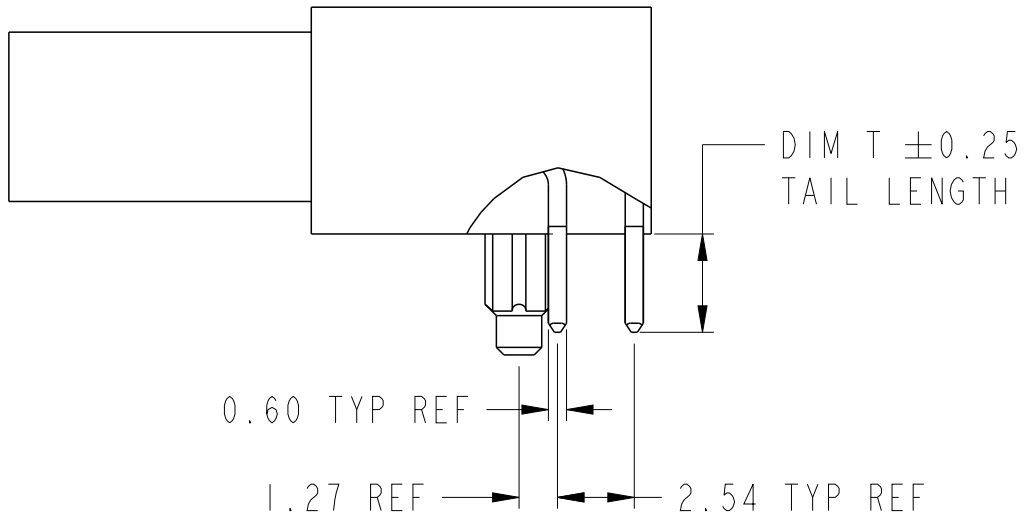
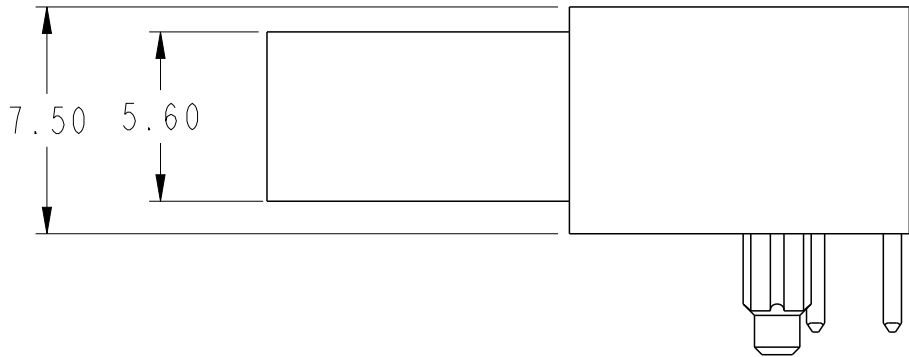
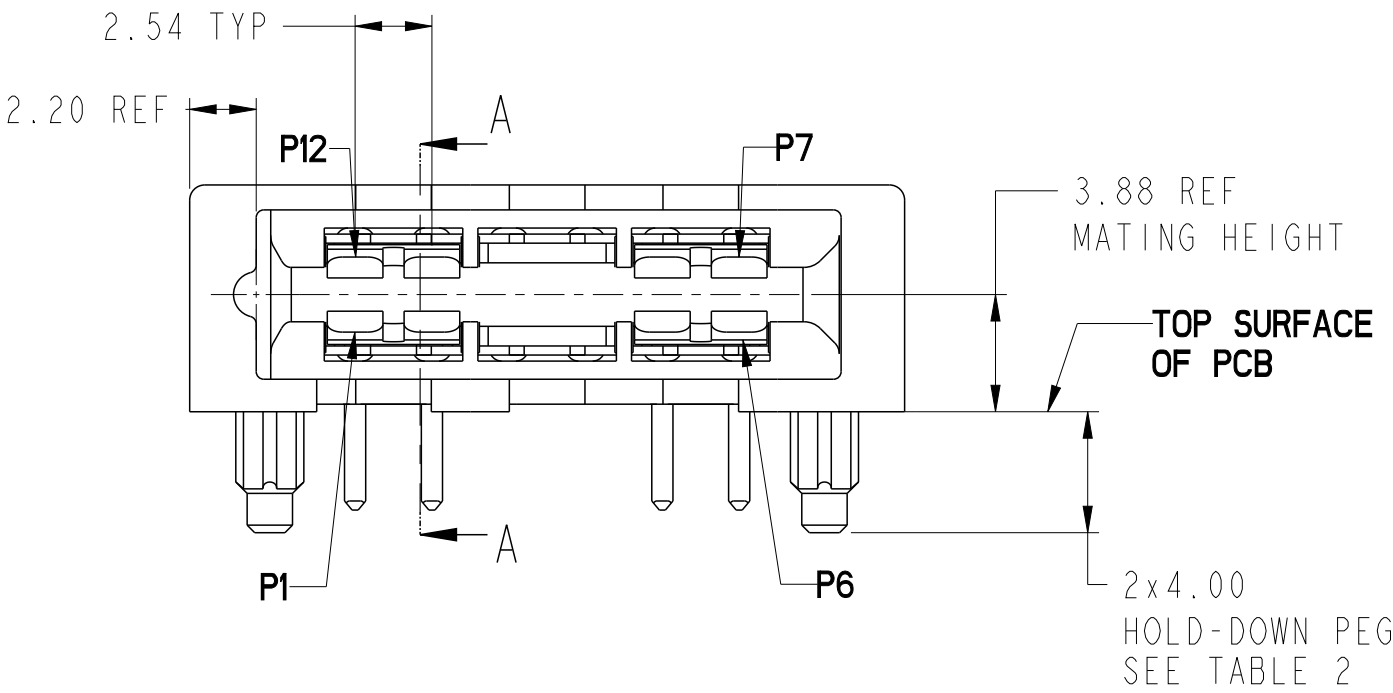
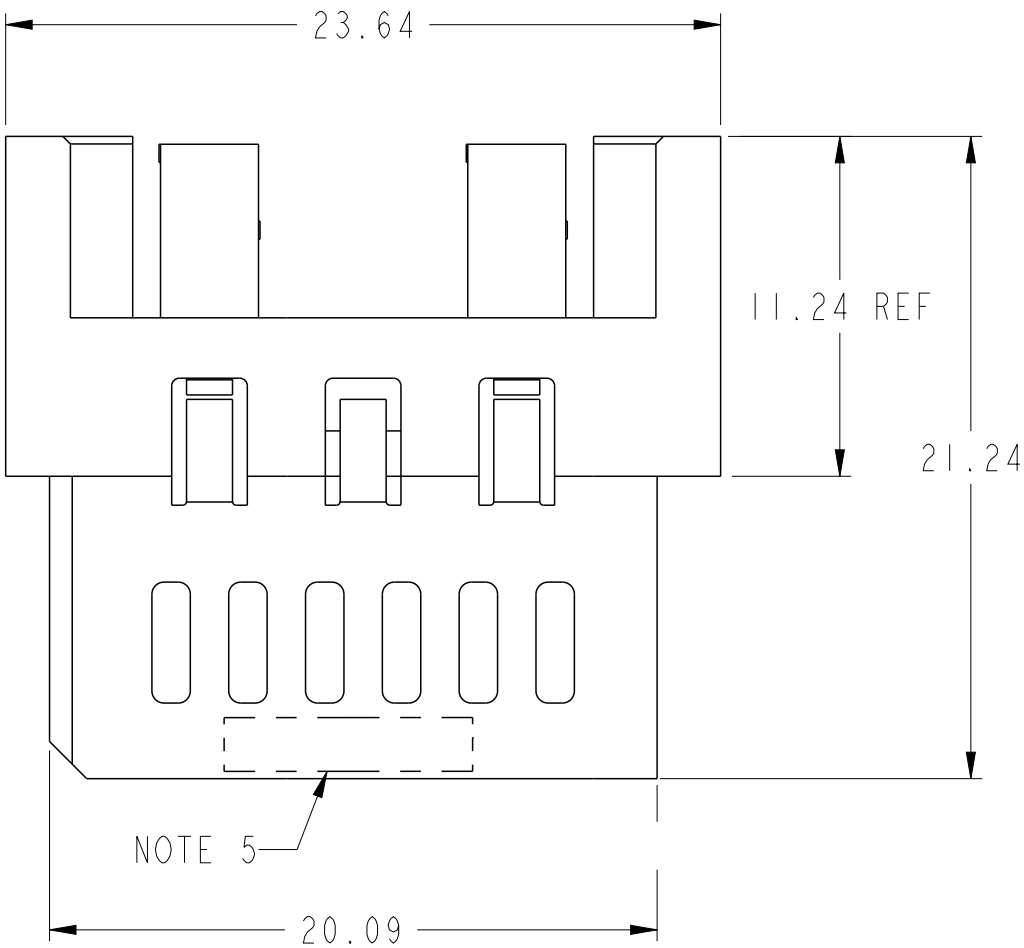


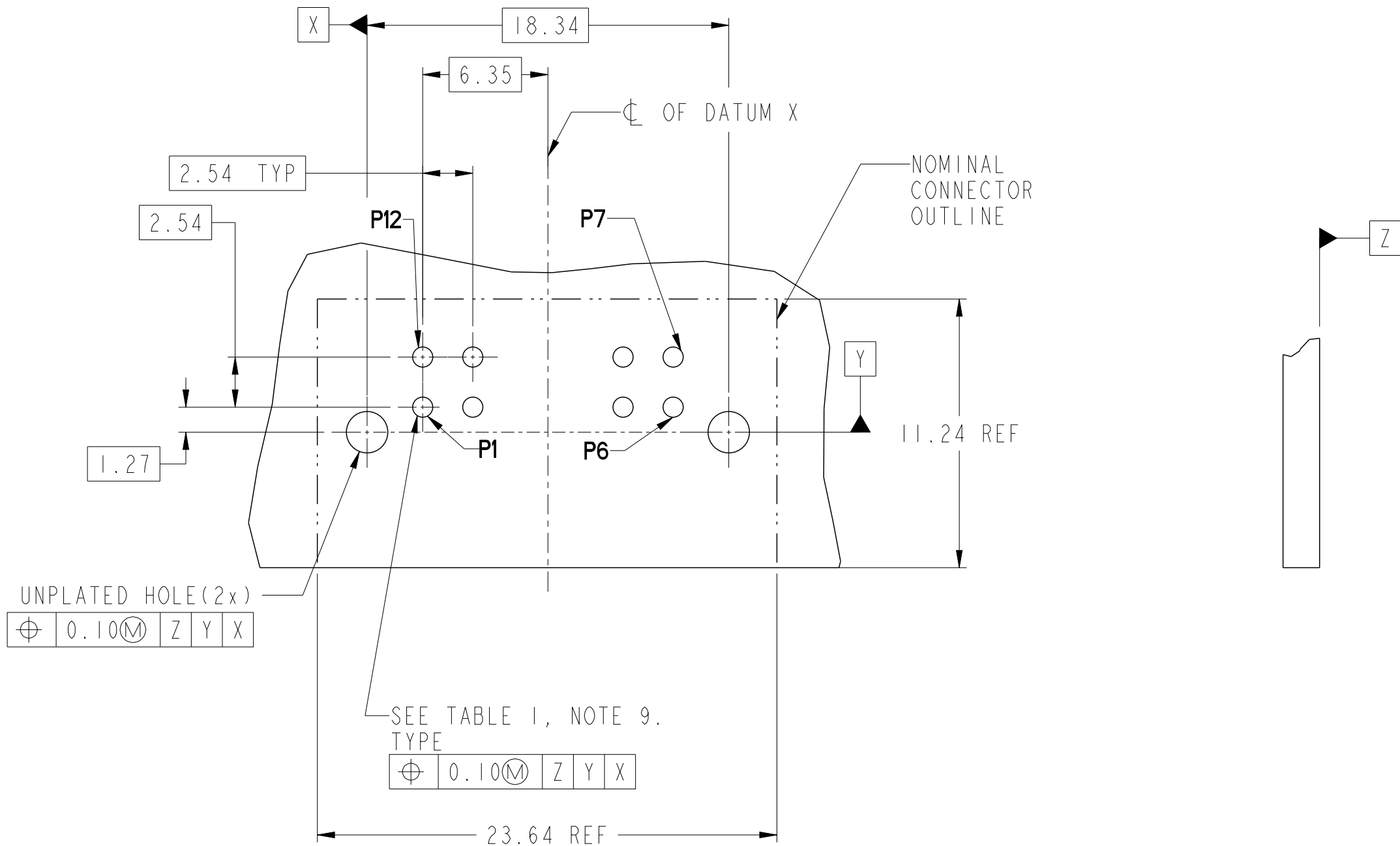
A  
B  
C  
D  
E  
F



SECTION A-A  
SCALE 4:1

spec ref	-	dr	Hai-Ling Liu	2015/03/02	projection	MM	size	A2	scale	4:1
tolerance std	ISO 406 ISO 1101	eng	Hai-Ling Liu	2015/04/10	chr	Terris Liu	2015/04/10	ecn no	-	
surface	ISO 1302	appr	Pei-Ming Zheng	2015/04/10	product family		rel level	Released		
linear	0.X ±0.50 0.XX ±0.25 0.XXX ±0.1	FCI	HPCE BTB R/A RECEPTACLE 6LP OMITTED 2LP	dwg no	10133698	rev	A			
angular	0° ±2°	www.fci.com	cat. no.	Product - Customer Drw	sheet 1 of 3					

CONTACT TYPE	TOP LAYER DESCRIPTION	TABLE I (HPCE / SOLDER TAILS) PLATED THROUGH-HOLE REQUIREMENTS				
		DRILLED HOLE DIAMETER	COPPER THICKNESS	TIN-LEAD THICKNESS	TIN THICKNESS	FINISHED HOLE DIAMETER
POWER & SIGNAL	TIN-LEAD	1.10-1.16 (1.15 DRILL)	0.025 - 0.050	0.005 - 0.015	--	0.94 - 1.10
	IMMERSION TIN	1.10-1.16 (1.15 DRILL)	0.025 - 0.050	--	0.9 - 1.5um	0.94 - 1.10
	COPPER (SEE NOTE 8)	1.10-1.16 (1.15 DRILL)	0.025 - 0.050	--	--	0.94 - 1.10

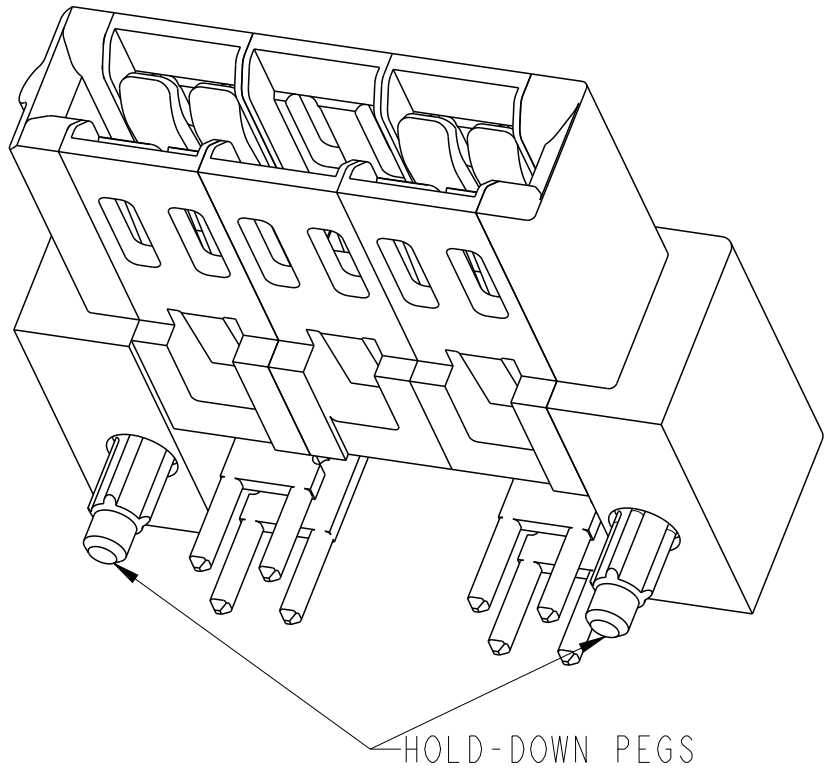


## RECOMMENDED PCB LAYOUT

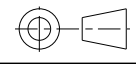


spec ref	-	dr	Hai-Ling Liu	2015/03/02	projection	MM	size	A2	scale	4:1
tolerance std	ISO 406 ISO 1101	eng	Hai-Ling Liu	2015/04/10	chr	Terris Liu	2015/04/10	ecn no	-	
surface	ISO 1302	appr	Pei-Ming Zheng	2015/04/10	product family	HPCE BTB R/A RECEPTACLE	6LP OMITTED 2LP	rel level	Released	
linear	0.X ±0.50 0.XX ±0.25 0.XXX ±0.1	angular	0° ±2°	www.fci.com	cat. no.	Product - Customer Drw	sheet 2 of 3	rev	A	

A  
B  
C  
D  
E  
F

HPCE PART NUMBER (TABLE 2)			
PART NUMBER	TAIL TYPE	HOLD-DOWN PEGS OPTION	DIM T ±0.25 TAIL LENGTH
10133698-001LF	SOLDER TAIL	YES	3.25
10133698-002LF		NO	
10133698-003LF		YES	2.60
10133698-004LF		NO	



- NOTES:
- CONNECTOR MATERIALS:
    - HOUSING: HIGH TEMPERATURE THERMAL PLASTIC, BLACK  
UL 94V-0 COMPLIANT
    - CONTACTS: HIGH PERFORMANCE COPPER ALLOY.
  - CONTACT FINISH REF. GS-12-1125.
  - PRODUCT SPECIFICATION: GS-12-1125.
  - APPLICATION SPECIFICATION: GS-20-0388.
  - PRODUCT MARKING (FCI - PART NUMBER & DATE CODE) ON HOUSING IN AREA SHOWN.
  - PACKAGING MEETS FCI SPECIFICATION GS-14-2272.
  - HOUSING COMPONENT WILL WITHSTAND EXPOSURE TO 260°C PEAK TEMPERATURE FOR 60 SECONDS IN A CONVECTION, INFRA-RED, OR VAPOR PHASE REFLOW OVEN.
  - COPPER PLATING THICKNESS IN CENTER OF VIA-HOLE CAN BE NO MORE THAN 0.003 LESS THAN OTHER AREAS.
  - ALL HOLE SIZES ARE FINISHED HOLE SIZES.
  - MOUNTING HOLES ARE UNPLATED  
Ø 2.18 +/- 0.03 FOR SOLDER TAILS

spec ref		-		dr	Hai-Ling Liu	2015/03/02	projection		MM	size	A2	scale	4:1	
tolerance std		TOLERANCES UNLESS OTHERWISE SPECIFIED		eng	Hai-Ling Liu	2015/04/10				ecn no	-			
ISO 406 ISO 1101				chr	Terris Liu	2015/04/10				rel level	Released			
				appr	Pei-Ming Zheng	2015/04/10	product family							
surface		linear	0.X	±0.50		title	HPCE BTB R/A RECEPTACLE 6LP OMITTED 2LP			dwg no	10133698		rev	A
			0.XX	±0.25										
			0.XXX	±0.1										
		angular	0°	±2°										

A  
B  
C  
D  
E  
F