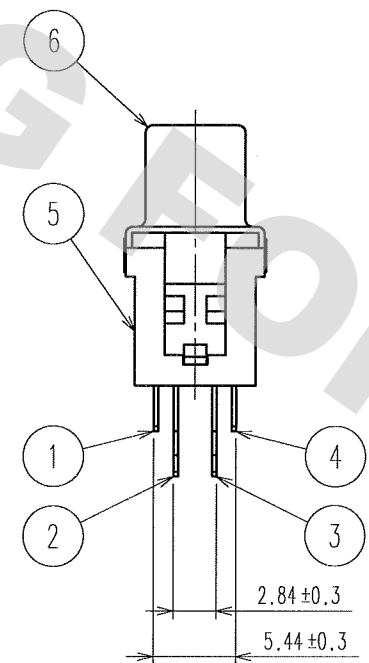
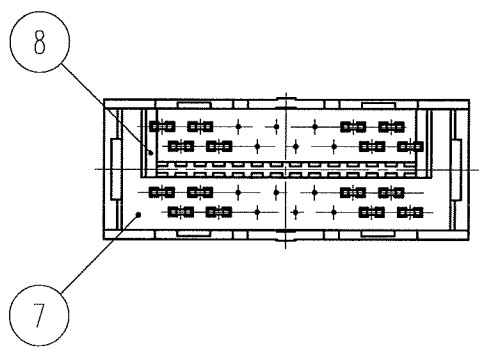
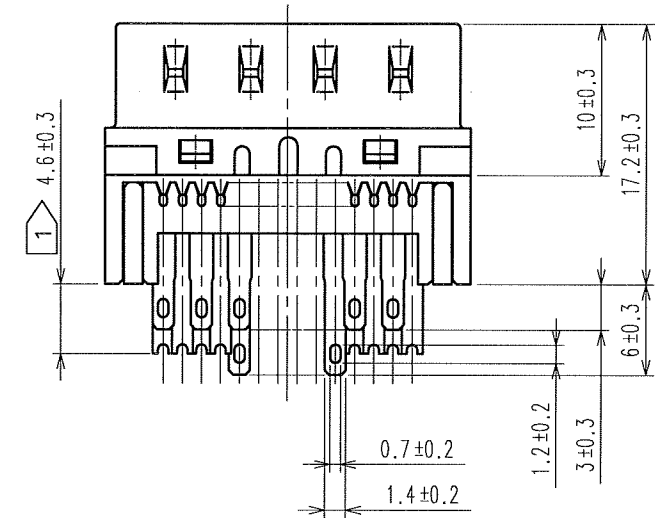
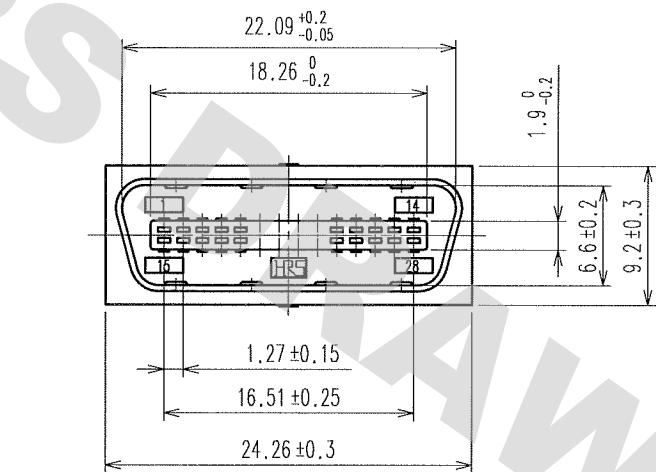


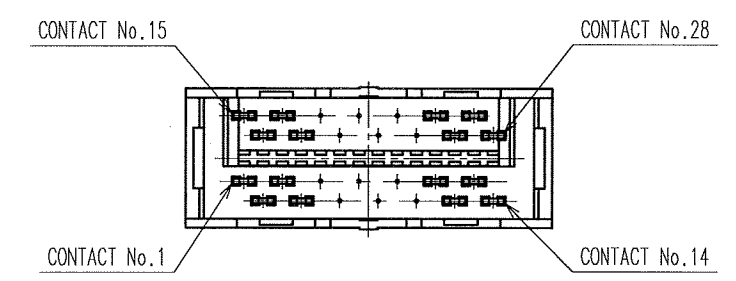
DRAWING FOR REFERENCE: This is subject to change without notice  
08/11/2012

TO
Q1

COUNT	DESCRIPTION OF REVISIONS	BY	CHKD	DATE	COUNT	DESCRIPTION OF REVISIONS	BY	CHKD	DATE
△				..	△				..
△				..	△				..
△				..	△				..



CONTACT NO. ON THE SIDE OF CABLE ASSEMBLY IS AS SHOWN BELOW.



NOTE 1 THE LENGTH OF CONTACT NO.1,3,11,13,16,18,26,AND 28 IS 4.6±0.3.

4	PHOSPHOR BRONZE	CONTACT AREA:GOLD PLATING 0.2μm TERMINAL AREA:GOLD FLASH PLATING	8	PBT	UL94V-0 (BLACK)
3	PHOSPHOR BRONZE	CONTACT AREA:GOLD PLATING 0.2μm TERMINAL AREA:GOLD FLASH PLATING	7	PBT	UL94V-0 (BLACK)
2	PHOSPHOR BRONZE	CONTACT AREA:GOLD PLATING 0.2μm TERMINAL AREA:GOLD FLASH PLATING	6	STEEL	NICKEL PLATING 1~3μm
1	PHOSPHOR BRONZE	CONTACT AREA:GOLD PLATING 0.2μm TERMINAL AREA:GOLD FLASH PLATING	5	PBT	UL94V-0 (MILKY-WHITE)
NO.	MATERIAL	FINISH, REMARKS	NO.	MATERIAL	FINISH, REMARKS
CODE NO.(OLD)			DRAWN	DESIGNED	CHECKED
			Y. Sato 05.09.01	T. Toniguchi 05.09.01	J. Enami 05.09.01
SCALE 2 : 1			APPROVED H. Miura 05.09.01		
UNITS mm			RELEASED		
DRAWING NO. EDC3-040138-01			PART NO. DX40-28P(55)		
HRS HIROSE ELECTRIC CO., LTD			CODE NO. CL230-0108-5-55		