

REVISION X

TABLE 1					
EDGE MOUNT THICKNESS	"A"	"B"	"C"	BODY	CONTACT
-EM2	.130[3.30]	.0670[1.702]	.058[1.47]	QTE-20-01-D-EM2-XX	T-1S42-01-XXX
*-EM3	.160[4.06]	.0980[2.489]	.088[2.24]	QTE-20-01-D-EM3-XX	T-1S42-02-XXX

* = SEE NOTE 11

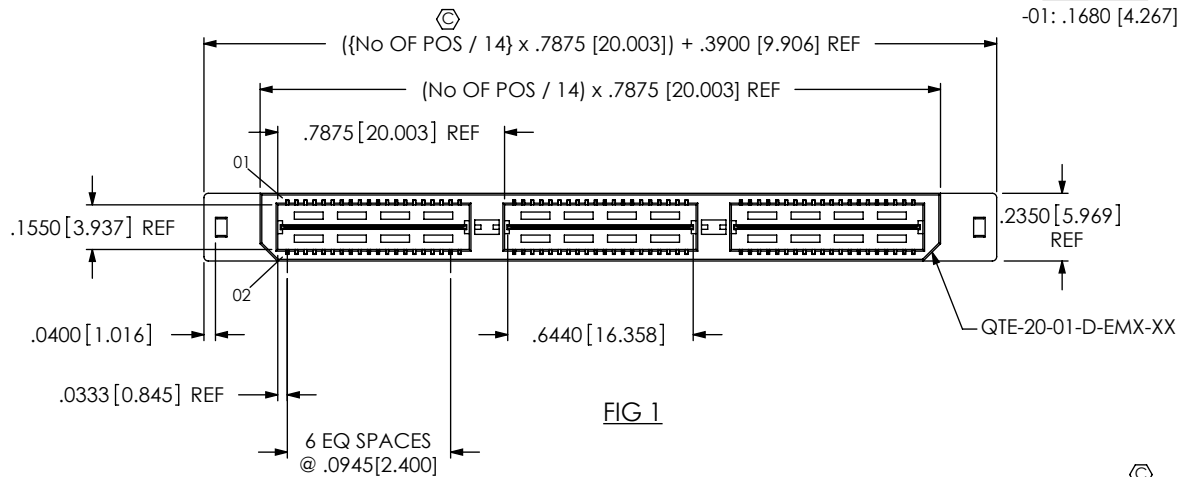
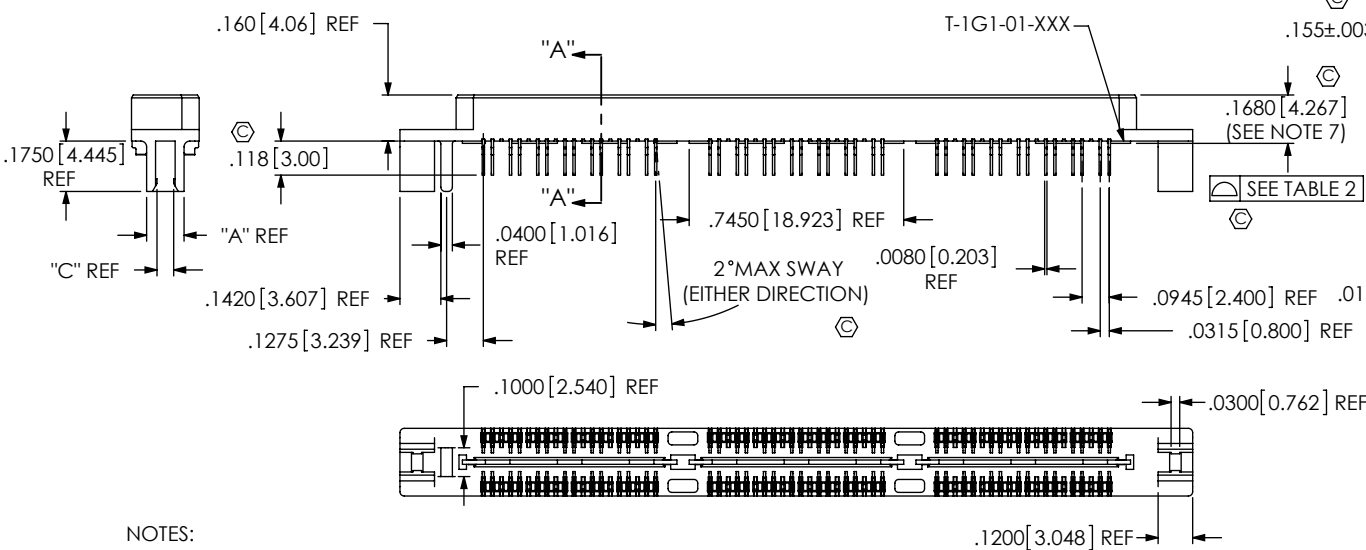


FIG 1



SECTION "A"-A"

TABLE 2		
No OF POSITIONS	GND PLANE COPLANARITY	ASSEMBLY BOW
-014 THRU -042	.0040	.0040
**-.056 THRU **.070	.0050	.0050

** = SEE NOTE 14

NOTES:

- ⊗ REPRESENTS A CRITICAL DIMENSION.
- MAXIMUM BURR ALLOWANCE: .0015 [0.038]
- MINIMUM TERMINAL RETENTION: 6 OZ.
- MINIMUM GROUND PLANE RETENTION: 1 LB.
- PARTS TO BE MOLD-TO-POSITION.
- L PLATING CAN BE SUBSTITUTED FOR -F PLATING.
- MAXIMUM VARIANCE OF .002 [0.05]
- NOTE DELETED.
- BOARD THICKNESS TO BE MEASURED FROM SOLDER PAD TO SOLDER PAD.
- [Http://www.samtec.com/processing/edgemt_tectalk/index.htm](http://www.samtec.com/processing/edgemt_tectalk/index.htm) FOR INFORMATION ON PROCESSING EM PARTS.
- EM3 IS NOT A STANDARD OFFERING; AVAILABLE AS AN ASP ONLY.
- NOTE DELETED.
- PARTS WITHOUT -TY OPTION SHALL BE PACKAGED IN TRAYS.
- AVAILABLE FOR EXISTING CUSTOMERS ONLY.

QTE-XXX-01-XXX-D-DP-EMX-XX

No OF POSITIONS

-014, -028, -042
**-056, **-070
(PER ROW)
**SEE NOTE 14

LEAD STYLE

-01: .1680 [4.267]

OPTION

-GP: GUIDE POST
(USE QTE-20-01-D-EMX-XX-GP
(SEE FIG 2, SHEET 2)

EDGE MOUNT THICKNESS

-EM2: .064[1.63] +/- .004 PCB
(USE QTE-20-01-D-EM2-XX & T-1S42-01-XXX)
*-EM3:(USE QTE-20-01-D-EM3-XX & T-1S42-02-XXX)
(SEE NOTE 11)

DIFFERENTIAL PAIR

ROW SPECIFICATION

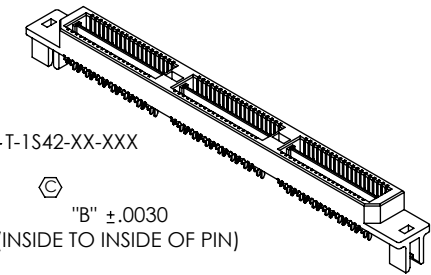
-D: DOUBLE (USE QTE-20-XX-D-EMX-XX)

No OF BANKS

* = NOT ENGINEERING APPROVED

PLATING SPECIFICATION

-F: 3μ" SELECTIVE GOLD IN CONTACT AREA, MATTE TIN ON TAIL (T-1S42-XX-F & T-1G1-01-F SEE NOTE 6)
-L: 10μ" SELECTIVE GOLD IN CONTACT AREA, MATTE TIN ON TAILS (USE T-1S42-XX-L & T-1G1-01-L)
-H: 30μ" GOLD IN CONTACT AREA, 3μ" GOLD ON TAIL (USE T-1S42-XX-H & T-1G1-01-G)
-STL: 30μ" SELECTIVE GOLD IN CONTACT AREA, TIN/LEAD (90%/10 +/-5%) TAIL (USE T-1S42-XX-STL & T-1G1-01-STL)
-FTL: 3μ" SELECTIVE GOLD IN CONTACT AREA, TIN/LEAD (90%/10 +/-5%) TAIL (USE T-1S42-XX-FTL & T-1G1-01-FTL)



"B" ±.0030
(INSIDE TO INSIDE OF PIN)

UNLESS OTHERWISE SPECIFIED, DIMENSIONS ARE IN INCHES.

TOLERANCES ARE:
DECIMALS ANGLES
.XX: ±.01 [.3] 2°
.XXX: ±.005 [.13]
.XXXX: ±.0020 [.051]

PROPRIETARY NOTE
THIS DOCUMENT CONTAINS CONFIDENTIAL AND PROPRIETARY INFORMATION AND ALL DESIGN, MANUFACTURING, REPRODUCTION, USE, PATENT RIGHTS AND SALES RIGHTS ARE EXPRESSLY RESERVED BY SAMTEC, INC. THIS DOCUMENT SHALL NOT BE DISCLOSED, IN WHOLE OR PART, TO ANY UNAUTHORIZED PERSON OR ENTITY NOR REPRODUCED, TRANSFERRED OR INCORPORATED IN ANY OTHER PROJECT IN ANY MANNER WITHOUT THE EXPRESS WRITTEN CONSENT OF SAMTEC, INC.

MATERIAL: DO NOT SCALE DRAWING
INSULATOR: LCP, COLOR: BLACK
TERMINAL & GROUND PLANE: PHOS BRONZE

SHEET SCALE: 1.5:1

samtec

520 PARK EAST BLVD, NEW ALBANY, IN 47150
PHONE: 812-944-6733 FAX: 812-948-5047
e-Mail: info@SAMTEC.com code 55322

DESCRIPTION:
.8mm HS EDGEMOUNT TERMINAL ASSEMBLY

DWG. NO.
QTE-XXX-01-XXX-D-DP-EMX-XX

BY: KEVIN B 12/12/00 SHEET 1 OF 2

F:\DWG\MISC\MKTG\QTE-XXX-01-XXX-D-DP-EMX-XX-MKT.SLDDRW

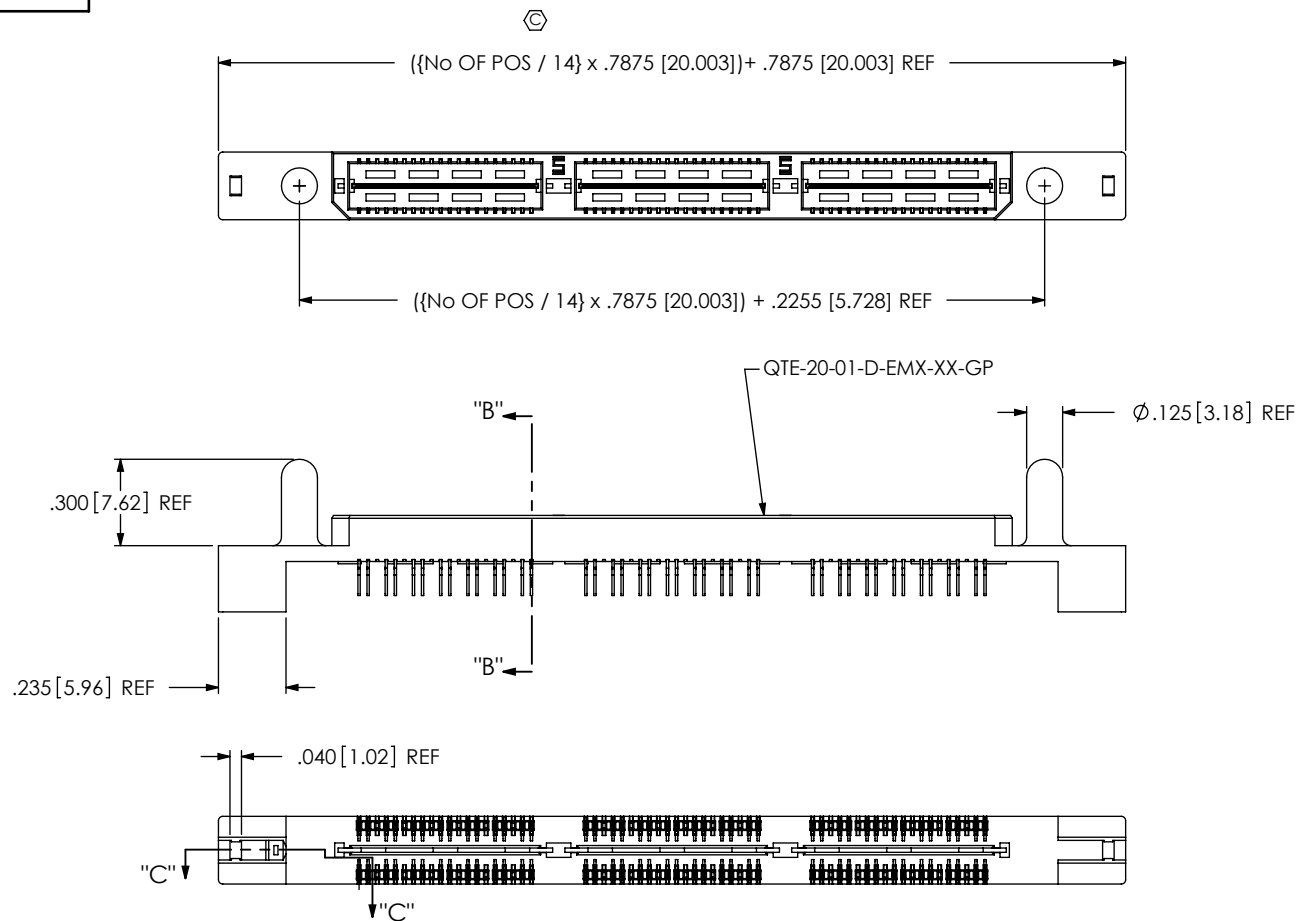
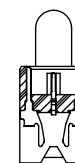
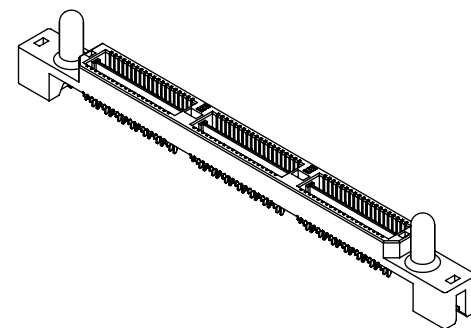
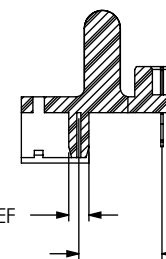


FIG 2
-GP OPTION SHOWN
(SAME AS FIG 1, UNLESS OTHERWISE STATED)



SECTION "B"-"B"



.0700 [1.778] REF
.2887 [7.332] REF

SECTION "C"-"C"

F:\DWG\MISC\MKTG\QTE-XXX-01-XXX-D-DP-EMX-XX-MKT.SLDDRW

<p>• PROPRIETARY NOTE •</p> <p>THIS DOCUMENT CONTAINS CONFIDENTIAL AND PROPRIETARY INFORMATION AND ALL DESIGN, MANUFACTURING, REPRODUCTION, USE, PATENT RIGHTS AND SALES RIGHTS ARE EXPRESSLY RESERVED BY SAMTEC, INC. THIS DOCUMENT SHALL NOT BE DISCLOSED, IN WHOLE OR PART, TO ANY UNAUTHORIZED PERSON OR ENTITY NOR REPRODUCED, TRANSFERRED OR INCORPORATED IN ANY OTHER PROJECT IN ANY MANNER WITHOUT THE EXPRESS WRITTEN CONSENT OF SAMTEC, INC.</p>	<p>samtec</p> <p>520 PARK EAST BLVD, NEW ALBANY, IN 47150 PHONE: 812-944-6733 FAX: 812-948-5047 e-Mail: info@SAMTEC.com code 55322</p>
<p>DO NOT SCALE DRAWING</p> <p>SHEET SCALE: 1.5:1</p>	<p>DESCRIPTION: .8mm HS EDGEMOUNT TERMINAL ASSEMBLY</p> <p>DWG. NO. QTE-XXX-01-XXX-D-DP-EMX-XX</p> <p>BY: KEVIN B 12/12/00 SHEET 2 OF 2</p>