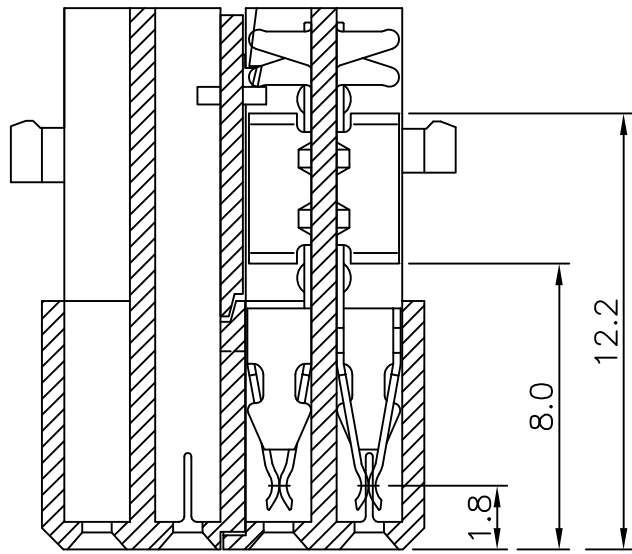
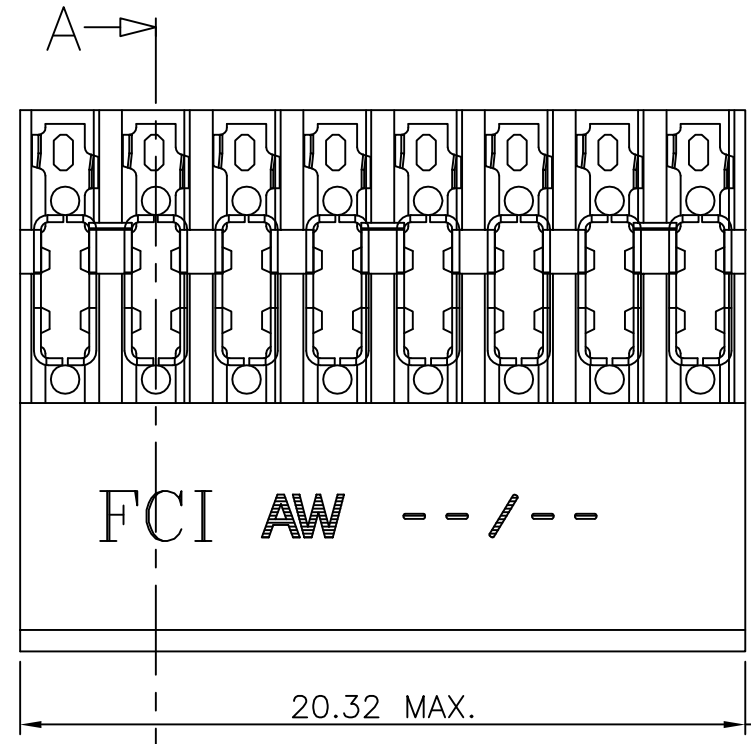
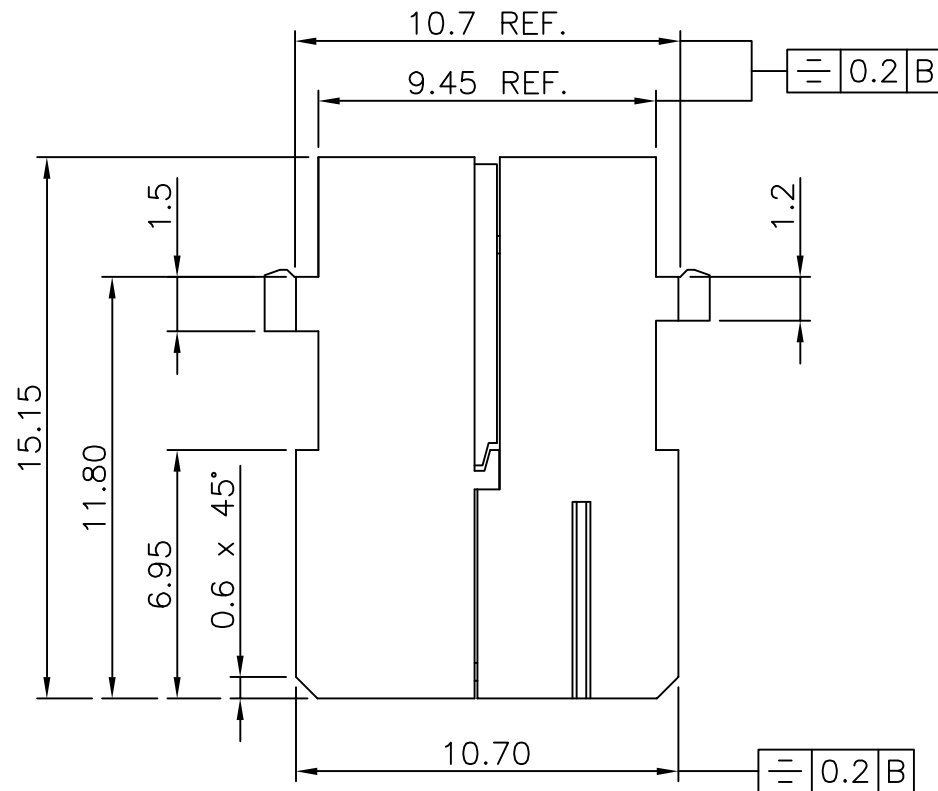


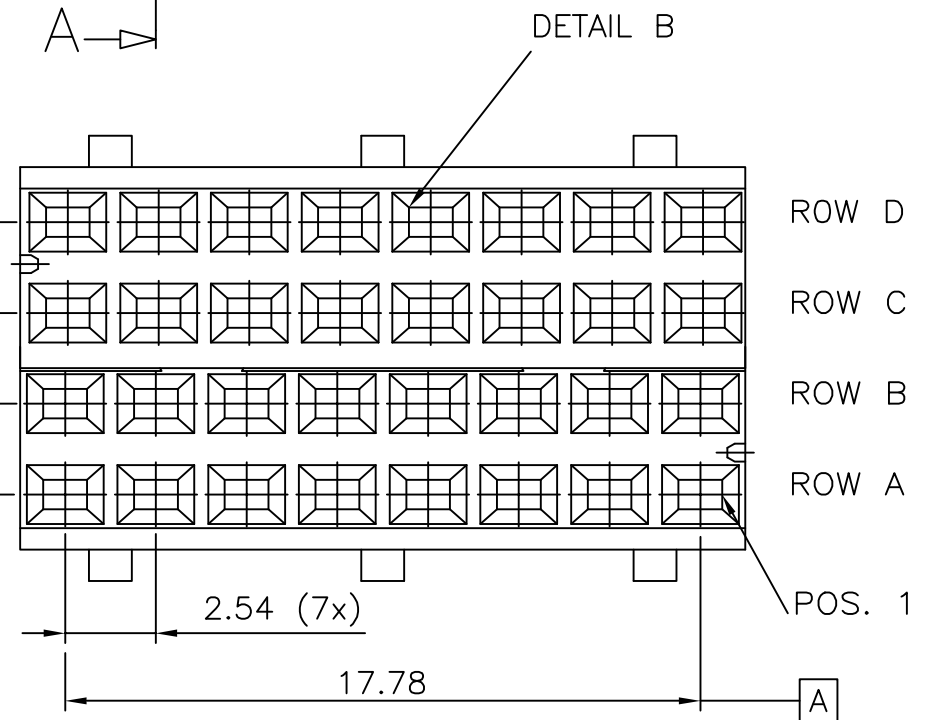
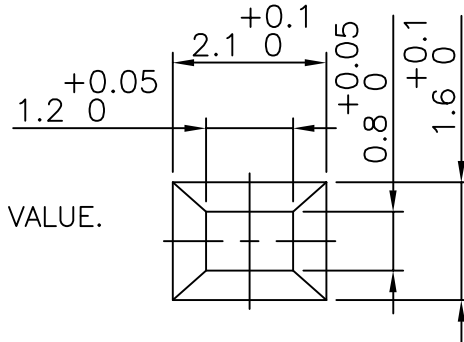
PRODUCT NUMBER  
 BPS9B32CDD-00L9  
 BPS9B32CDD-00L9LF ← RoHS COMPATIBLE



SECTION AA



DETAIL B



**PERFORMANCES CHARACTERISTICS**

VOLTAGE RATING : 250 VAC(rms)  
 CURRENT RATING : 1 A AT 70 °C; 1.5 A AT 25 °C.  
 INSULATION RESISTANCE : INITIAL 1000 MΩ MIN.  
 AFTER TEST 100 MΩ MIN.  
 DIEL. WITHST VOLTAGE : 1000 VAC(rms)  
 CONTACT RESISTANCE : INITIAL 15 mW MAX.  
 AFTER TEST 5 mW MAX. RISE OF INITIAL VALUE.  
 OPERATING TEMPERATURE : -55 °C TO +105 °C.  
 INSERTION FORCE : 1N MAX./CONTACT.  
 WITHDRAWAL FORCE : 0,2 N MIN./CONTACT.

**CONSTRUCTION**

BODY : GLASS-REINFORCED THERMOPLASTIC UL-RATED 94-V-0.  
 INSULATION PLATE : GLASS-REINFORCED THERMOPLASTIC UL-RATED 94-V-0.  
 CONTACTS : PHOSPHOR BRONZE  
 PLATING : 1.25 μm Au SELECTIVE OVER Ni IN CONTACT AREA;  
 SnPb ON I.D.C. TERMINAL FOR LEADED PRODUCTS.  
 Sn (MATTE TIN) ON I.D.C TERMINAL FOR LEAD FREE PRODUCTS.

**PARTNUMBERS**

BPS9B32CDD000-- : CONNECTOR FOR WIRE SIZE AWG28, AWG30  
 BPS9B32CDD000--LF : CONNECTOR FOR WIRE SIZE AWG28, AWG30  
 BPS9B32CDD200-- : CONNECTOR FOR WIRE SIZE AWG24, AWG26  
 BPS9B32CDD200--LF : CONNECTOR FOR WIRE SIZE AWG24, AWG26

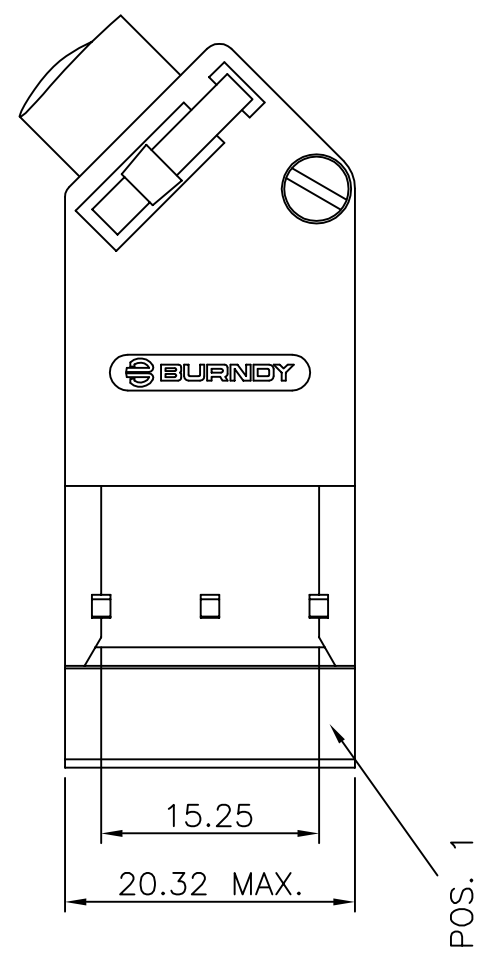
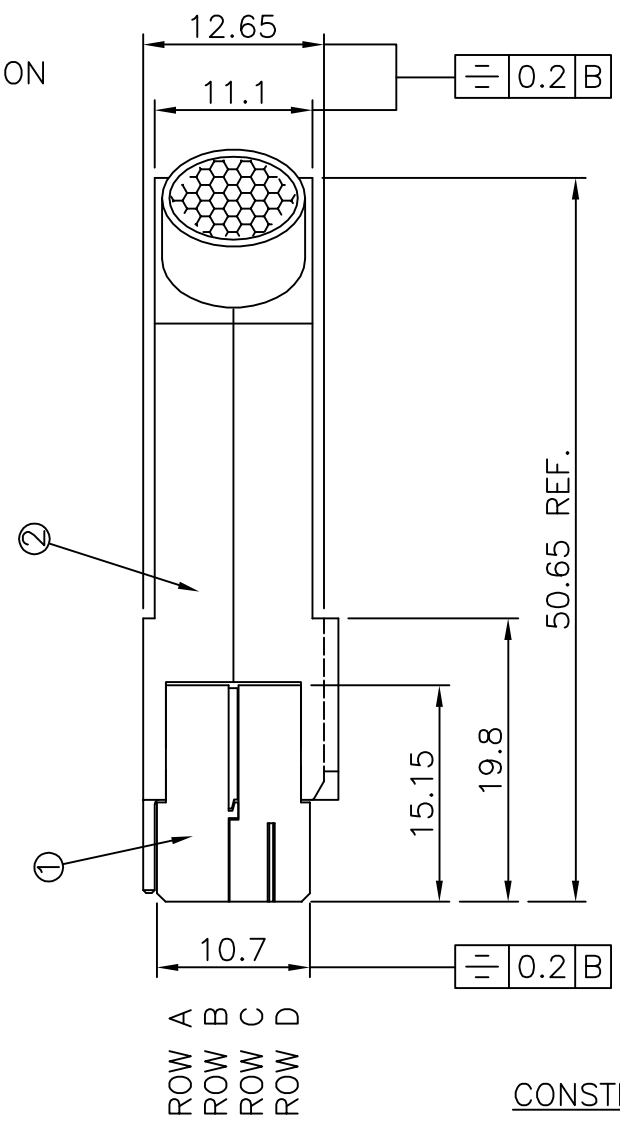
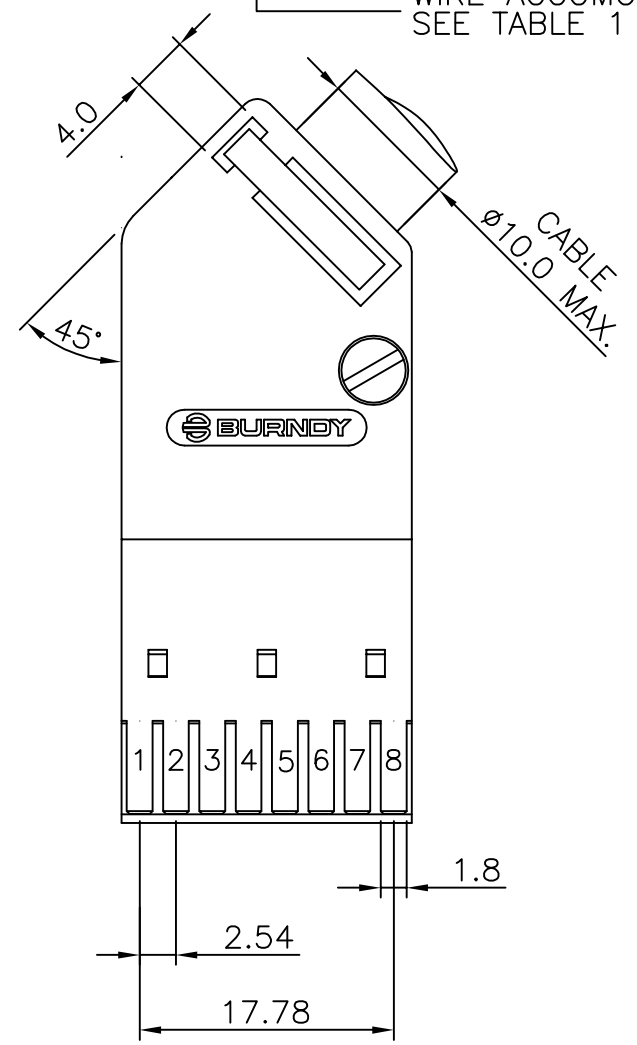
**NOTE:**  
 1. THE "LF" PRODUCT MEETS EUROPEAN UNION DIRECTIVES AND OTHER COUNTRY REGULATIONS AS DESCRIBED IN GS-22-008.  
 2. LEAD FREE OR RoHS DIRECTIVE LABELING TO BE PROVIDED AS PER GS-14-920.

mat'l. code		surface		tolerance		projection		product family	
SEE NOTES		ISO 1302		ISO 406 ISO 1101		mm		BPS9	
ltr	ecn no	dr	date	tolerances unless otherwise specified		mm		title	
A	F00833	DLE	2000-11-02	angles	linear	mm		ASSY BPS9	
B	I05-0169	MINI	2005-09-22	±1'		scale 5:1		32 POS. C,D LOADED	
C	I06-0115	MINI	2006-07-11					dwg no	
		dr	D.LEGRAND	2000-11-02		FCI		sheet 1 of 2	
		enr	J.F.NOTTEAU	2000-11-02				size	
		chr	RAKHEE GEORGE	2006-07-11				A3	
		app	RAKHEE GEORGE	2006-07-11				type	
								Product Customer Drawing	
sheet index	revision sheet	C	C						
		1	2						

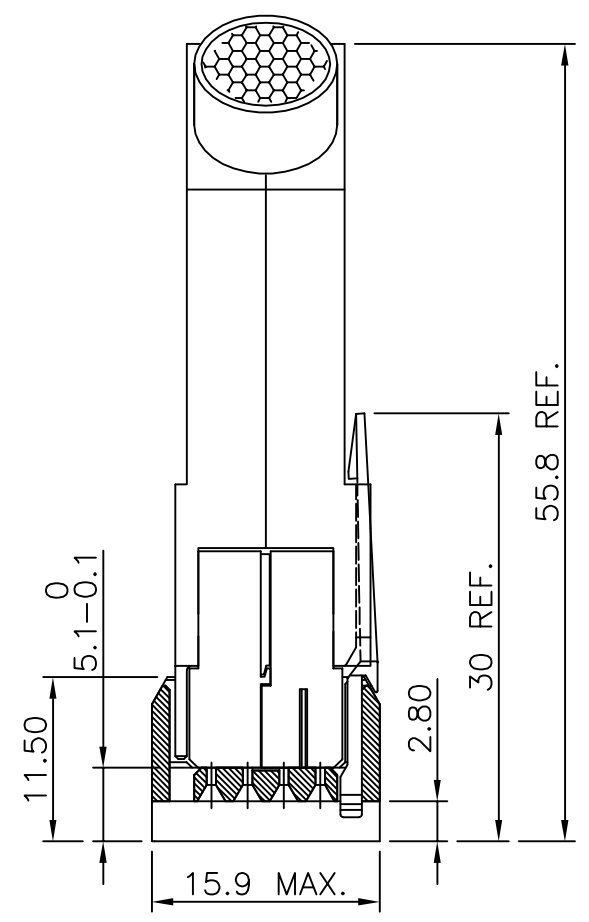
PRODUCT NUMBER  
 BPS9B32CDD-C0--  
 BPS9B32CDD-C0--LF

RoHS COMPATIBLE  
 PLATING CODE  
 SEE TABLE  
 WIRE ACCOMODATION  
 SEE TABLE 1

**NOTE:**  
 1. THE "LF" PRODUCT MEETS EUROPEAN UNION DIRECTIVES AND OTHER COUNTRY REGULATIONS AS DESCRIBED IN GS-22-008.  
 2. LEAD FREE OR RoHS DIRECTIVE LABELING TO BE PROVIDED AS PER GS-14-920.



SYSTEM OVERVIEW



CONSTRUCTION

COVER : GLASS-REINFORCED THERMOPLASTIC UL-RATED 94-V-0.  
 TIE-WRAP. : OPTIONAL(CAT. NR. TF3)  
 LOCKING KEY : OPTIONAL(CAT. NR. BPBH9L0) SEE DRAWING N° 54745  
 DISCRIMINATION KEY : OPTIONAL(CAT. NR. BPBH9L1) SEE DRAWING N° 54746

**NOTE:**  
 MAXIMUM SCREW (HPT1600 & HPT1600LF) DRIVING TORQUE : 0.17 NM.

TABLE 1

PART NUMBER	DESCRIPTION
BPS9B32CDD2C0--LF	ROW C & D LOADED CONN. FOR AWG 24 / AWG 26
BPS9B32CDD0C0--LF	ROW C & D LOADED CONN. FOR AWG 28 / AWG 30
BPS9B32CDD2C0--	ROW C & D LOADED CONN. FOR AWG 24 / AWG 26
BPS9B32CDD0C0--	ROW C & D LOADED CONN. FOR AWG 28 / AWG 30

mat'l. code SEE NOTES		surface ISO 1302 ✓		tolerance ISO 406 ISO 1101		projection mm		product family BPS9	
ltr	ecn no	dr	date	tolerances unless otherwise specified		mm		title ASSY BPS9 32 POS. C,D WITH COVER	
A	F00833	DLE	2000-11-02	angles	0.1±0.2	mm		dwg no 54751	
B	I05-0169	MINI	2005-09-22	linear	0.01±0.1	scale 2:1		sheet 2 of 2 A3	
C	I06-0115	MINI	2006-07-11	±1°				type Product Customer Drawing	
sheet index		revision sheet		dr D.LEGRAND 2000-11-02		FCI			
				engr J.F.NOTTEAU 2000-11-02					
				chr RAKHEE GEORGE 2006-07-11					
				appd RAKHEE GEORGE 2006-07-11					



Copyright FCI