

## 6 x 3.5mm Compact Tactile Switch

### Features

#### Optimized Mechanical Features

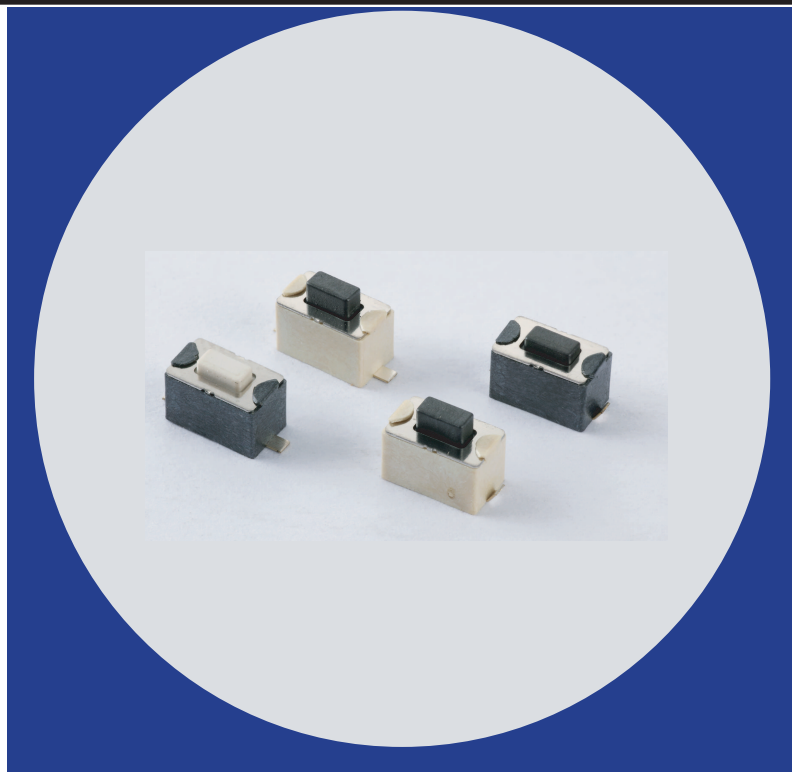
- Surface mount gull-wing and J bend terminal configurations
- Compatible with IR reflow and manual soldering
- Variety of operating force & actuator height options

#### Optimized Contact System

- Excellent tactile feedback

#### Materials

- Silver coated terminals for better solderability
- High temperature materials (UL94V-0)
- RoHS compliant



## Electrical and Mechanical Specifications

#### Switch Contact Resistance

100 milliohms maximum

#### Insulation Resistance

100 Megohms minimum between terminals

#### Maximum Rating

50mA, 12 VDC

#### Dielectric Strength

250 VAC for 1 minute between adjacent terminals

#### Operating Force

160 gf or 260gf

#### Travel

0.25mm

#### Operating Temperature

- 40°C to +85°C

#### Storage Temperature

- 40°C to +85°C

#### Actuator Strength

2 Kgf maximum

#### Actuation Life

160 gf: 50,000 cycles

260 gf: 30,000 cycles

#### Allowable Solder Time

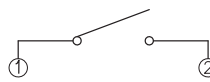
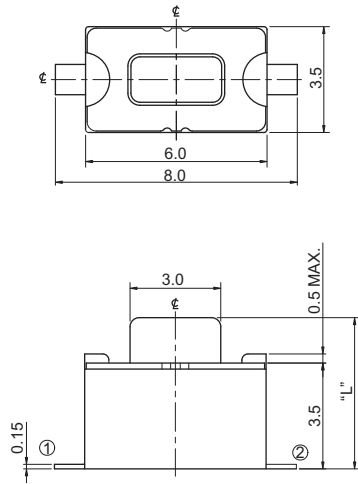
IR Reflow: Up to 5 seconds at 260°C

Manual soldering: Up to 3 seconds at 350°C

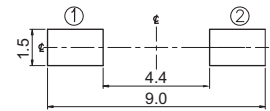
#### Packaging

Standard: Tape and reel packaging with 330mm diameter reel and 16mm wide plastic tape

## CTS SERIES 222BMV - Surface Mount Gull Wing, Vertical Actuation



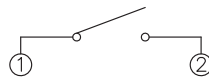
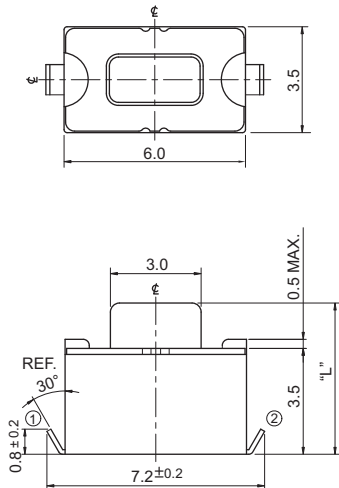
CIRCUIT DIAGRAM



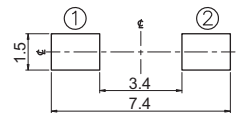
PCB LAYOUT

DIMENSION : mm  
STANDARD TOLERANCE :  
.X (1 PLACE) :  $\pm 0.15$

## CTS SERIES 222BJV - Surface Mount J Bend, Vertical Actuation



CIRCUIT DIAGRAM



PCB LAYOUT

DIMENSION : mm  
STANDARD TOLERANCE :  
.X (1 PLACE) :  $\pm 0.15$

## Ordering Information

