

Han-Eco 16B Outd.-HSM2-f. DL-M40-cov.-gl

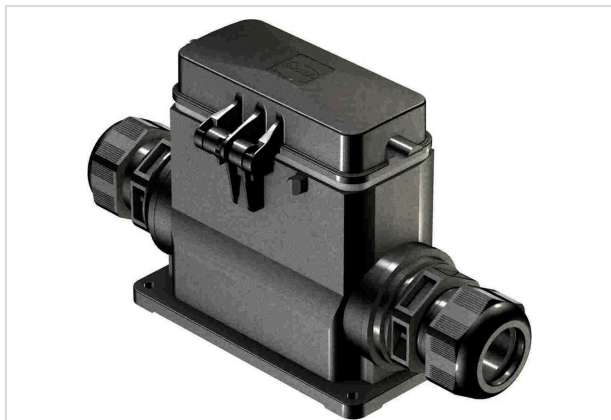


Image is for illustration purposes only. Please refer to product description.

Part number	19 43 316 0268
Specification	Han-Eco 16B Outd.-HSM2-f. DL-M40-cov.-gl
HARTING eCatalogue	https://b2b.harting.com/19433160268

Identification

Category	Hoods/Housings
Series of hoods/housings	Han-Eco® B
Type of hood/housing	Surface mounted housing
Description of hood/housing	With thermo-plastic cover With integrated cable gland

Version

Size	16 B
Version	Side entry
Number of cable entries	2
Cable entry	2x M40
Locking type	Double locking lever (on the hood)

Technical characteristics

Limiting temperature	-40 ... +125 °C
Note on the limiting temperature	For use as a connector according to IEC 61984.
Number of relockings	≥500
Degree of protection acc. to IEC 60529	IP66
Clamping range	16 ... 28 mm

Material properties

Material (hood/housing)	Polyamide (PA) Fibre-glass reinforced
Colour (hood/housing)	RAL 9005 (jet black)



Pushing Performance
Since 1945

Material properties

Material (seal)	FPM
Colour (seal)	RAL 7001 (silver-grey)
Material flammability class acc. to UL 94	V-0

Specifications and approvals

Specifications	IEC 61984
	EN 45545-2 Fire protection on railway vehicles
Approvals	CE

Commercial data

Packaging size	1
Country of origin	Germany
European customs tariff number	85389099
GTIN	5713140179417
ETIM	EC000437
eCl@ss	27440202 Shell for industrial connectors