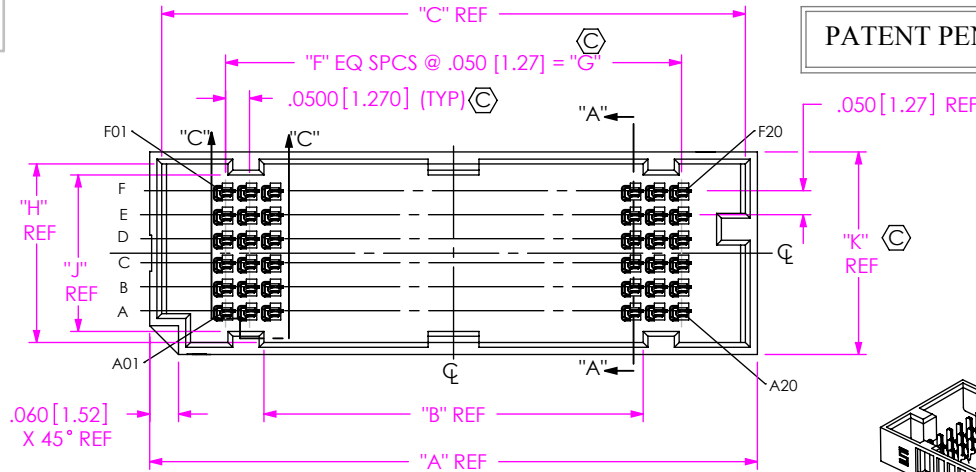


DO NOT  
SCALE FROM  
THIS PRINT



PATENT PENDING

LPAM-XX-XX.X-X-XX-X-K-TR

No. OF POSITIONS  
-10, -20, -30, -40, \*\*50  
(PER ROW)

LEAD STYLE  
-01.0: 1.0mm  
-01.5: 1.5mm

PLATING  
SPECIFICATION  
-L: 10μ" GOLD IN CONTACT AREA,  
MATTE TIN ON TAIL  
-S: 30μ" GOLD IN CONTACT AREA,  
MATTE TIN ON TAIL

ROW  
-04: 4 ROWS  
-06: 6 ROWS  
-08: 8 ROWS  
\*-10: 10 ROWS

(\* = NOT TOOLED)

(\*\*=NOT ENGINEERING APPROVED,  
NOT TOOLED FOR 04, 06 & 10 ROWS)

PACKAGING  
-TR: TAPE & REEL  
(SEE NOTES  
4, 5 & 7)

OPTIONS  
-K: POLYIMIDE PAD  
(SEE SHT 3, FIG. 3)

SOLDER COMPOSITION  
& STYLE

-1: 63.0% TIN / 37.0% LEAD  
CRIMP TAIL  
-2: 95.5% TIN / 3.8% SILVER/  
.7% COPPER CRIMP TAIL

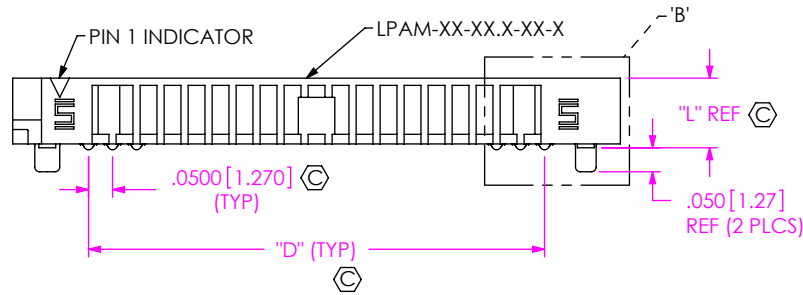


TABLE 5			
LEAD STYLE	"L"	"M"	"V"
-01.0	0.145 [3.68]	0.043 [1.09]	0.007 [0.18]
-01.5	0.165 [4.19]	0.063 [1.60]	0.017 [0.43]

TABLE 4			
No. OF ROWS	"H"	"J"	"K"
-04	0.272 [6.91]	0.226 [5.74]	0.322 [8.18]
-06	0.372 [9.45]	0.326 [8.28]	0.422 [10.72]
-08	0.472 [11.99]	0.426 [10.82]	0.522 [13.26]
*-10	0.572 [14.53]	0.526 [13.36]	0.622 [15.80]

(\* = NOT TOOLED)

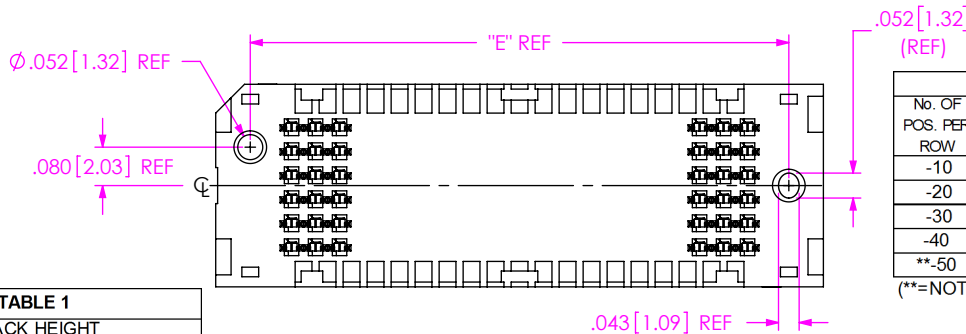


TABLE 3							
No. OF POS. PER ROW	"A"	"B"	"C"	"D"	"E"	"F"	"G"
-10	0.766 [19.46]	0.290 [7.37]	0.716 [18.19]	0.450 [11.43]	0.622 [15.80]	9	0.450 [11.43]
-20	1.266 [32.16]	0.790 [20.07]	1.216 [30.89]	0.950 [24.13]	1.122 [28.50]	19	0.950 [24.13]
-30	1.766 [44.86]	1.290 [32.77]	1.716 [43.59]	1.450 [36.83]	1.622 [41.20]	29	1.450 [36.83]
-40	2.266 [57.56]	1.790 [45.47]	2.216 [56.29]	1.950 [49.53]	2.122 [53.90]	39	1.950 [49.53]
**50	2.766 [70.26]	2.290 [58.17]	2.716 [68.99]	2.450 [62.23]	2.622 [66.60]	49	2.450 [62.23]

(\*\*=NOT ENGINEERING APPROVED, NOT TOOLED FOR 04, 06 & 10 ROWS)

TABLE 1		
STACK HEIGHT		
LPAM LEAD STYLE	LPAF LEAD STYLE	
	-03.0	-03.5
-01.0	.157 [4.00]	.177 [4.50]
-01.5	.177 [4.50]	.197 [5.00]

FIG 1  
LPAM-20-01.0-X-06-2-K-TR SHOWN  
(SOME CENTER FEATURES REMOVED FOR CLARITY)

TABLE 2		
LPAM ASSY	BODY CALLOUT	TERMINAL SUB ASSY
LPAM-XX-01.0-X-XX-X-TR	LPAM-XX-01.0-XX-X	SUB-T-1M78-01.0-X-X
LPAM-XX-01.5-X-XX-X-TR	LPAM-XX-01.5-XX-X	SUB-T-1M78-01.5-X-X

NOTES:

- ⑥ REPRESENTS A CRITICAL DIMENSION.
- PUSH OUT FORCE: 25LBS [1.11N].
- DIMENSION TO BE MEASURED IN ALL FOUR CORNERS.
- TAPE & REEL WILL BE SUPPLIED WHETHER OR NOT -TR IS SPECIFIED.
- FOR QUANTITIES UP TO 49 PCS., NO LEADER, TRAILER OR REEL WILL BE SUPPLIED. FOR 50-124 PIECES, NO LEADER OR TRAILER WILL BE SUPPLIED.
- NOTE DELETED.
- ATTACH LABEL "SEAX-0001" TO EACH TAPE & REEL PACKAGE.
- MAXIMUM VARIATION BETWEEN ROWS: .003[0.08]. TO BE MEASURED AT FIRST AND LAST POSITIONS ONLY, ALL ROWS.

UNLESS OTHERWISE SPECIFIED,  
DIMENSIONS ARE IN INCHES.  
TOLERANCES ARE:  
DECIMALS ANGLES  
.XX: ±.01[.3]  
.XXX: ±.005[.13]  
.XXXX: ±.0020[.051]

\* PROPRIETARY NOTE  
THIS DOCUMENT CONTAINS CONFIDENTIAL AND  
PROPRIETARY INFORMATION AND ALL DESIGN,  
MANUFACTURING, REPRODUCTION, USE, PATENT RIGHTS  
AND SALES RIGHTS ARE EXPRESSLY RESERVED BY SAMTEC,  
INC. THIS DOCUMENT SHALL NOT BE DISCLOSED, IN WHOLE  
OR PART, TO ANY UNAUTHORIZED PERSON OR ENTITY NOR  
REPRODUCED, TRANSFERRED OR INCORPORATED IN ANY  
OTHER PROJECT IN ANY MANNER WITHOUT THE EXPRESS  
WRITTEN CONSENT OF SAMTEC, INC.

MATERIAL: DO NOT SCALE DRAWING  
INSULATOR: LCP, COLOR: BLACK  
TERMINAL: COPPER ALLOY

SHEET SCALE: 1:0.4

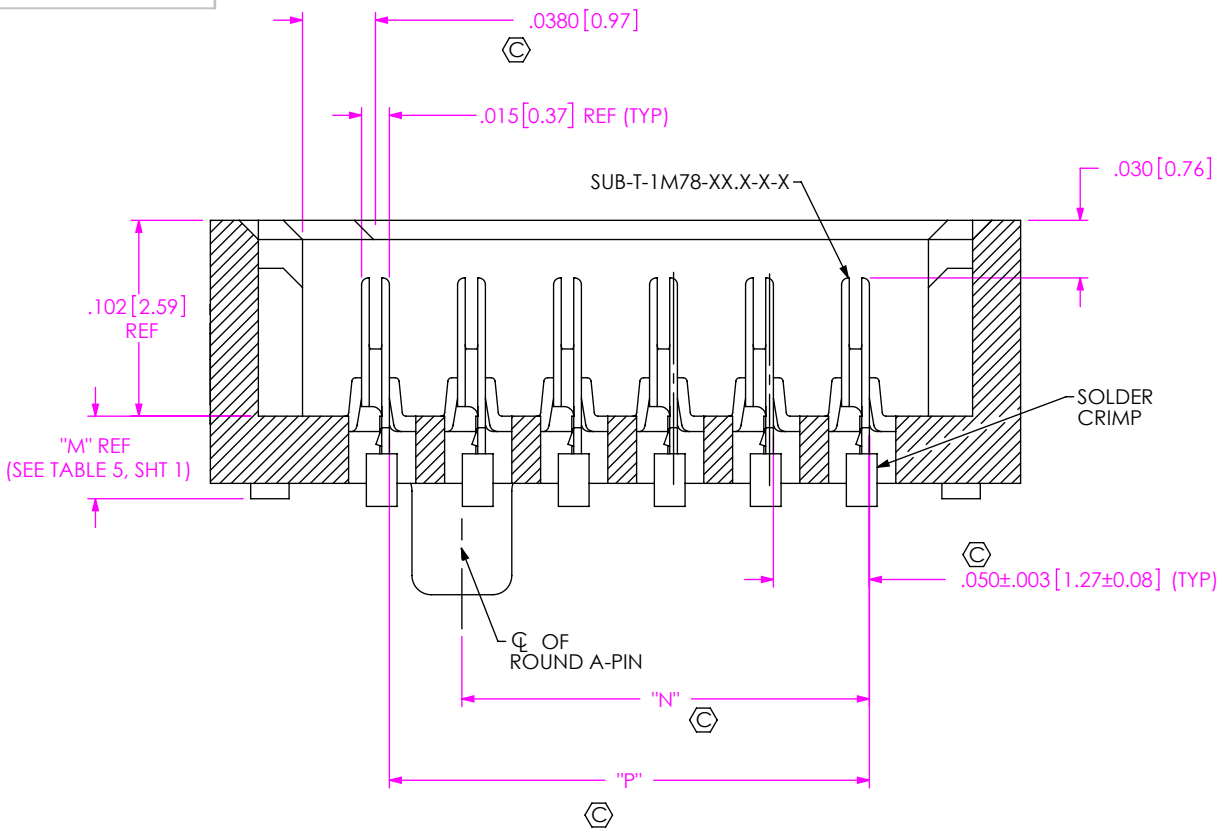
DESCRIPTION:  
LPAM TERMINAL ARRAY ASSY

DWG. NO.  
LPAM-XX-XX.X-X-XX-X-K-TR

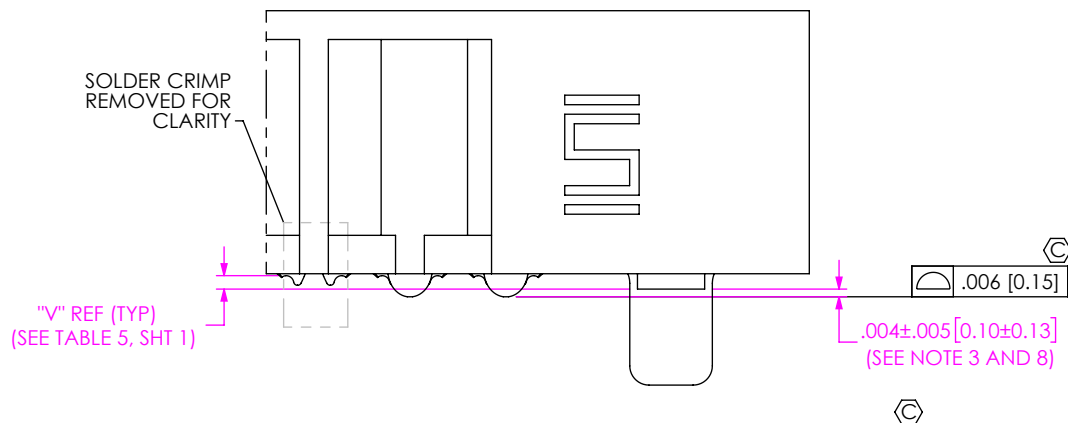
BY: KNOWLDEN 06/09/2009 SHEET 1 OF 3

**samtec**

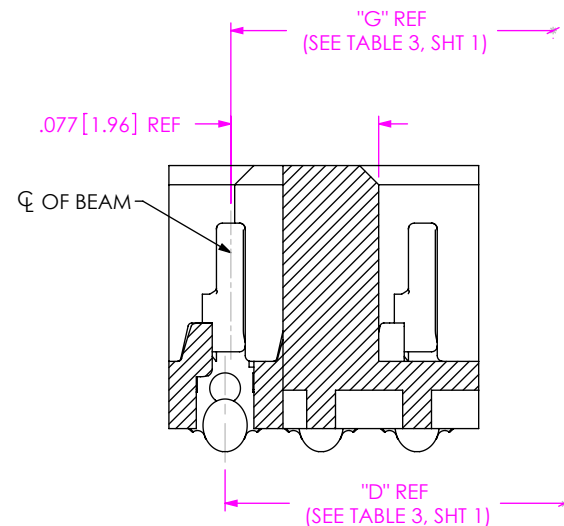
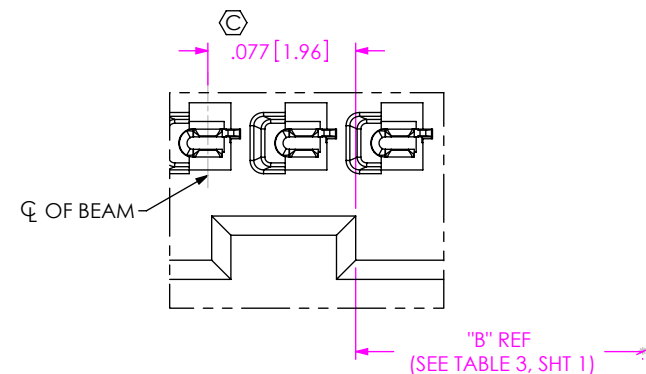
520 PARK EAST BLVD, NEW ALBANY, IN 47150  
PHONE: 812-944-6733 FAX: 812-948-5047  
e-Mail: info@SAMTEC.com code 55322



SECTION "A"-"A"  
SCALE 10:1



DETAIL 'B'  
SCALE 10:1



SECTION "C"-"C"  
SCALE 10:1

TABLE 6				
-No. OF ROWS	"N"		"P"	
-04	0.162	[4.11]	0.150	[3.81]
-06	0.212	[5.38]	0.250	[6.35]
-08	0.262	[6.65]	0.350	[8.89]
*-10	0.312	[7.92]	0.450	[11.43]

\*= NOT TOOLED

**PROPRIETARY NOTE**  
THIS DOCUMENT CONTAINS CONFIDENTIAL AND PROPRIETARY INFORMATION AND ALL DESIGN, MANUFACTURING, REPRODUCTION, USE, PATENT RIGHTS AND SALES RIGHTS ARE EXPRESSLY RESERVED BY SAMTEC, INC. THIS DOCUMENT SHALL NOT BE DISCLOSED, IN WHOLE OR PART, TO ANY UNAUTHORIZED PERSON OR ENTITY NOR REPRODUCED, TRANSFERRED OR INCORPORATED IN ANY OTHER PROJECT IN ANY MANNER WITHOUT THE EXPRESS WRITTEN CONSENT OF SAMTEC, INC.

DO NOT SCALE DRAWING

SHEET SCALE: 2:1

**samtec**

520 PARK EAST BLVD, NEW ALBANY, IN 47150  
PHONE: 812-944-6733 FAX: 812-948-5047  
e-Mail: info@SAMTEC.com code 55322

DESCRIPTION:  
LPAM TERMINAL ARRAY ASSY

DWG. NO.  
LPAM-XX-XX.X-X-XX-X-K-TR

BY: KNOWLDEN 06/09/2009 SHEET 2 OF 3

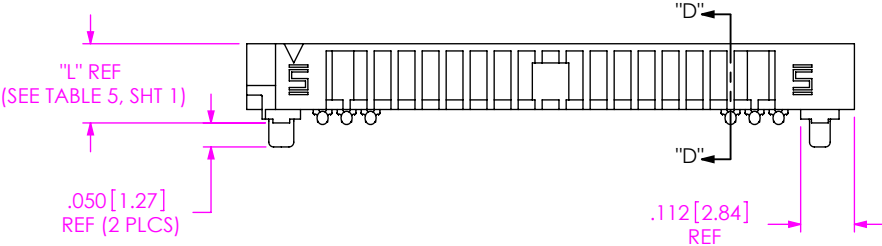
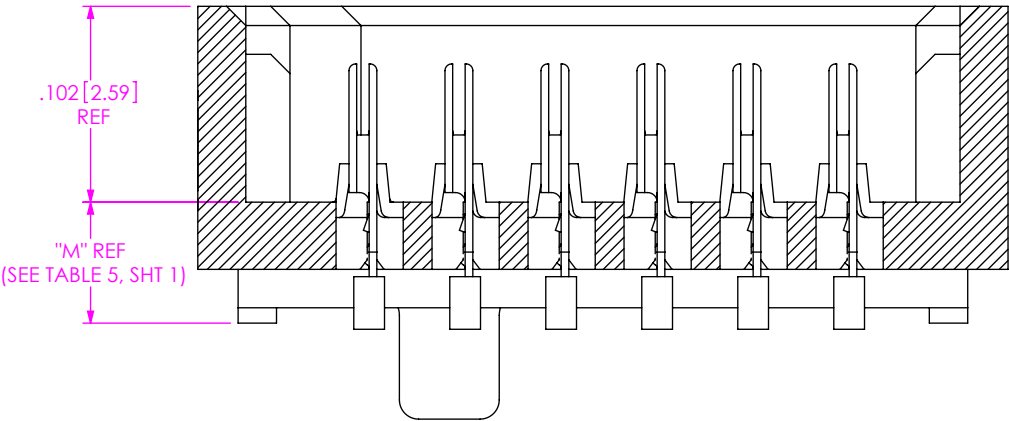


FIG 2  
LPAM-20-01.5-X-06-2-K-TR SHOWN  
(SOME CENTER FEATURES REMOVED FOR CLARITY)



SECTION "D"-"D"  
SCALE 10 : 1

TABLE 7								
ROWS	DOT APPLICATOR POLYIMIDE TAPE CALLOUT	"R"	"S"	"T"				
				10 POS.	20 POS.	30 POS.	*40 POS	*50 POS.
-04	K-DOT-.354-.469-.005	0.354 [8.99]	0.016 [0.41]	0.206 [5.23]	0.456 [11.58]	0.706 [17.93]	0.956 [24.28]	1.206 [30.63]
-06	K-DOT-.460-.550-.005	0.460 [11.68]	0.019 [0.48]	0.153 [3.89]	0.403 [10.24]	0.653 [16.59]	0.903 [22.94]	1.153 [29.29]
-08	K-DOT-.551-.625-.010	0.551 [14.00]	0.015 [0.37]	0.108 [2.74]	0.358 [9.09]	0.608 [15.44]	0.858 [21.79]	1.108 [28.14]
*-10	K-DOT-.649-.750-.005	0.649 [16.48]	0.014 [0.34]	0.059 [1.50]	0.309 [7.85]	0.559 [14.20]	0.809 [20.55]	1.059 [26.90]

\*= NOT TOOLED

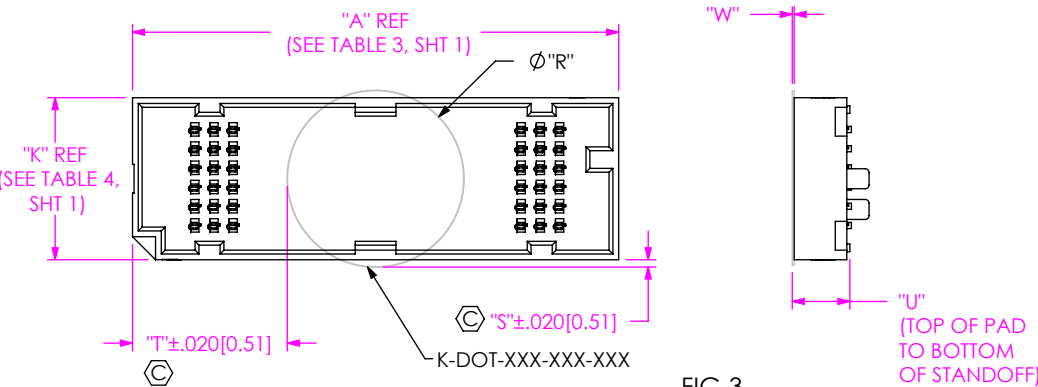


FIG 3  
-K POLYIMIDE PAD  
(USE K-DOT-XXX-XXX-XXX)  
LPAM-20-01.0-X-06-2-K-TR SHOWN  
(SOME CENTER FEATURES REMOVED FOR CLARITY)

TABLE 8			
ROW	"U"		"W"
	LEAD STYLE		
	-1.0	-1.5	
-04	.150 [3.81]	.170 [4.32]	.005 [0.13]
-06	.150 [3.81]	.170 [4.32]	.005 [0.13]
-08	.155 [3.94]	.175 [4.45]	.010 [0.25]
*-10	.150 [3.81]	.170 [4.32]	.005 [0.13]

(\*= NOT TOOLED)

PROPRIETARY NOTE  
THIS DOCUMENT CONTAINS CONFIDENTIAL AND PROPRIETARY INFORMATION AND ALL DESIGN, MANUFACTURING, REPRODUCTION, USE, PATENT RIGHTS AND SALES RIGHTS ARE EXPRESSLY RESERVED BY SAMTEC, INC. THIS DOCUMENT SHALL NOT BE DISCLOSED, IN WHOLE OR PART, TO ANY UNAUTHORIZED PERSON OR ENTITY NOR REPRODUCED, TRANSFERRED OR INCORPORATED IN ANY OTHER PROJECT IN ANY MANNER WITHOUT THE EXPRESS WRITTEN CONSENT OF SAMTEC, INC.

DO NOT SCALE DRAWING

SHEET SCALE: 2:1



520 PARK EAST BLVD, NEW ALBANY, IN 47150  
PHONE: 812-944-6733 FAX: 812-948-5047  
e-Mail info@SAMTEC.com code 55322

DESCRIPTION:  
LPAM TERMINAL ARRAY ASSY

DWG. NO.  
LPAM-XX-XX.X-X-XX-X-K-TR

BY: KNOWLDEN 06/09/2009 SHEET 3 OF 3