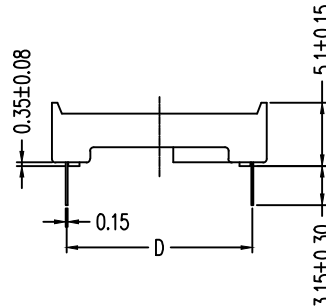
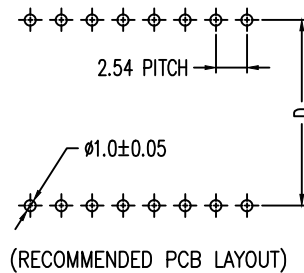
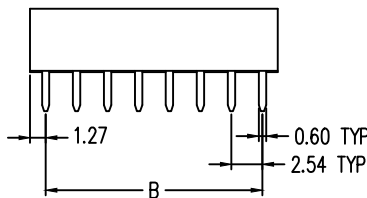
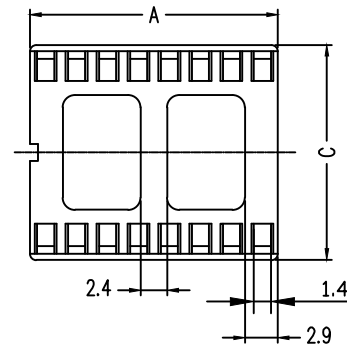
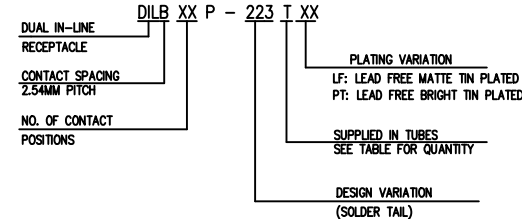


CATALOG NO	NO.OF CONTACTS	TABLE OF DIMENSIONS			
		A±0.30	B±0.25	C±0.30	D±0.20
DILB8P-223TXX	8P	10.16	7.62	10.16	7.62
DILB14P-223TXX	14P	17.78	15.24		
DILB16P-223TXX	16P	20.32	17.78		
DILB18P-223TXX	18P	22.86	20.32		
DILB20P-223TXX	20P	25.40	22.86		
DILB24P-224TXX	24P	30.48	27.94	17.78	15.24
DILB24P-223TXX	24P	30.48	27.94		
DILB28P-223TXX	28P	35.56	33.02		
DILB32P-223TXX	32P	40.64	38.10		
DILB40P-223TXX	40P	50.80	48.26		
DILB42P-223TXX	42P	53.34	50.80		



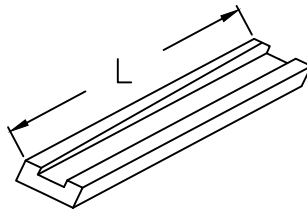
NOTES

- MATERIALS**
HOUSING: POLYAMIDE, UL94V-0 COLOR IN BLACK.
CONTACT: COPPER ALLOY.
- FINISH**
100u" MIN. MATTE OR BRIGHT TIN OVER 50u" MIN. NICKEL.
- PERFORMANCE CHARACTERISTICS**
 - OPERATING VOLTAGE: 200VAC;
 - CONTACT RESISTANCE: 30 MILLIOHMS MAX. AT 6 VDC;
 - CURRENT RATING: 1 AMP. MAX.;
 - OPERING TEMPERATURE: CONTINUOUS, -55°C TO 105°C;
 - INSULATION RESISTANCE: 1000 MEGAOHMS MIN AT 500 VDC;
 - DIELECTRIC WITHSTANDING VOLTAGE: 1000 VAC RMS MIN.;
 - DURABILITY: NO ELECTRICAL DEGRADATION AFTER 25 CYCLES;
 - THERMAL SHOCK: NO PHYSICAL OR ELECTRICAL DEGRADATION PER MIN-STD-1344, METHOD 1003, COND A;
 - MOISTURE RESISTANCE: 300 MEGAOHMS MIN PER MIL-STD-202, METHOD 106. OMIT STEPS 7a AND 7b;
 - VIBRATION: NO ELECTRICAL INTERRUPTION GREATER THAN 1 MICROSECOND PER MIL-STD-1344. METHOD 2005 COND III;
 - MECHANICAL SHOCK: NO ELECTRICAL INTERRUPTION GREATER THAN 1 MICROSECOND WHEN 17.64 oz (500g) IS APPLIED FOR 0.75 MILLISECONDS;
 - FLAMMABILITY: UL94 V-0;
 - INSERTION FORCE 340.2g /CONTACT MAX.;
WITHDRAWAL FORCE: 14.5g /CONTACT MIN.;
- ORDERING INFORMATION**

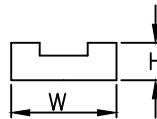


- DILBXXP-22XTLF: THE HOUSING WILL WITHSTAND EXPOSURE TO 260° PER PERK TEMPERATURE FOR 10 SECONDS IN A WAVE SOLDER APPLICATION.

mat'l. code				surface	tolerance	projection	product family	
				ISO1302	ISO406 ISO1101		EDGE CARD	
ltr	ecr no	dr	date	tolerances unless otherwise specified			title	
A	T05-0016	W.L	2005-01-24	angles	.X ± 0.3		DILB ASSEMBLY	
B	T06-0053	J.H	2006-03-28	length	.XX ± 0.2			
C	T06-0068	J.H	2006-07-07	Ø ± Z	.XXX ± 0.05			
D	ELX-24650	SAL	2016-08-03	dr	WADE LIU 2005-01-05		sheet 1 of 2	
				enrg	WADE LIU 2005-01-05		dwg no	
				chr	S. ALOSUS 2016-08-03		10052485	
				appd	BAU K PAUL 2016-08-03		type	
sheet index				revision	D D		Product-Customer Drw	
				sheet	1 2			



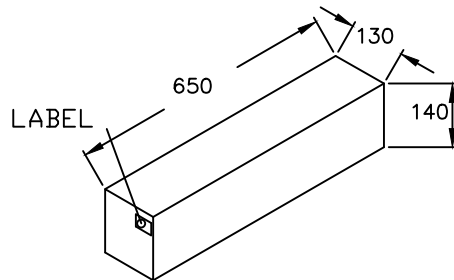
L	635	635
W	136	136
H	116	116



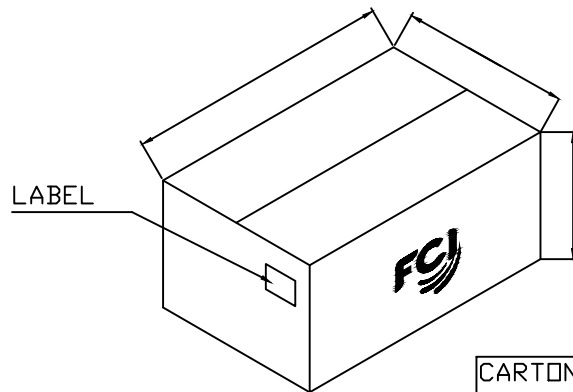
TUBE

DILB PACKING LIST FOR TUBE

DILB8P-223TXX	8P	60	100	6000	3	18000
DILB14P-223TXX	14P	34	100	3400	3	10200
DILB16P-223TXX	16P	30	100	3000	3	9000
DILB18P-223TXX	18P	26	100	2600	3	7800
DILB20P-223TXX	20P	24	100	2400	3	7200
DILB24P-224TXX	24P	20	100	2000	3	6000
DILB24P-223TXX	24P	20	60	1200	3	3600
DILB28P-223TXX	28P	17	60	1020	3	3060
DILB32P-223TXX	32P	15	60	900	3	2700
DILB40P-223TXX	40P	12	60	720	3	2160
DILB42P-223TXX	42P	11	60	660	3	1980



BOX



CARTON

mat'l. code				surface ISO1302 ✓		tolerance ISO406 ISO1101		projection MM		product family EDGE CARD	
ltr	ecr no	dr	date	tolerances unless otherwise specified						title	
D	EX-1-24650	SAL	2016-08-03	angles	.X ± 0.3					DILB ASSEMBLY	
				σ ± 2°	.XX ± 0.2					sheet 2 of 2	
				dr	WADE LIU	2005-01-05				dwg no	
				enr	WADE LIU	2005-01-05				10052485	
				chr	S. ALOSUS	2016-08-03				A4	
				appd	BAU K PAUL	2016-08-03				type	
sheet index		revision	D	D							
sheet		1	2								