

# Actuator

61-1200.0



<https://eao.com/p/61-1200.0>

Your product:

---



## 61-1200.0 Actuator

### OPERATING-/INDICATION PART

**Lens illumination:** illuminative

### MECHANICAL CHARACTERISTIC

**Operating Travel:** 3 mm

**Weight:** 0.005 kg

**Switching action:** Maintained

**Mechanical lifetime:** According to DIN/IEC 60512-5-6 and EN/IEC 60947-5-1, 1 Mio. cycles of operation

**Operating force:** 3 N ... 5 N snap-action switching element, 3.5 ... 11 N slow-make switching element

**Tightening torque:** Max. 0.5 Nm

### AMBIENT CONDITION

**IP Protection:** IP40 rear side, according to EN IEC 60529, IP67 front side, according to EN IEC 60529

**Storage temperature:** – 40 °C ... + 85 °C

### OTHER

**Short Description:** Actuator, illuminative, Maintained

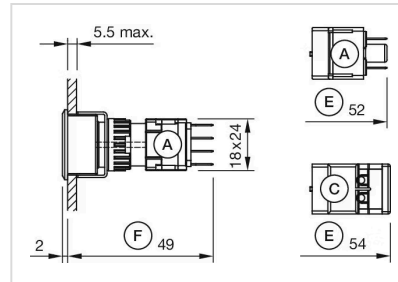
**Housing colour:** Black

**Housing material:** Plastic, according to UL 94 V0, self-extinguishing

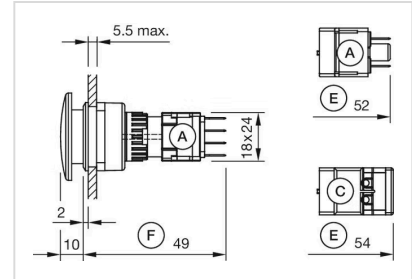
**Wiring diagrams:**



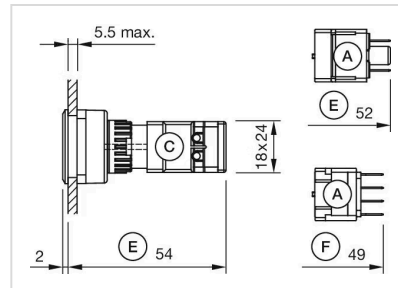
### Dimension drawings:



A = Plug-in terminal 2.8 mm x 0.5 mm  
C = Screw terminal  
E = Slow-make switching element  
F = Snap-action switching element

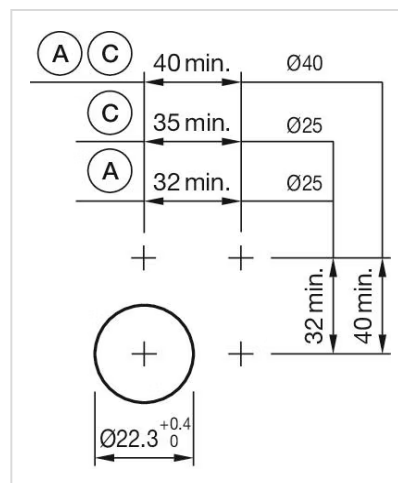


A = Plug-in terminal 2.8 mm x 0.5 mm  
C = Screw terminal  
E = Slow-make switching element  
F = Snap-action switching element

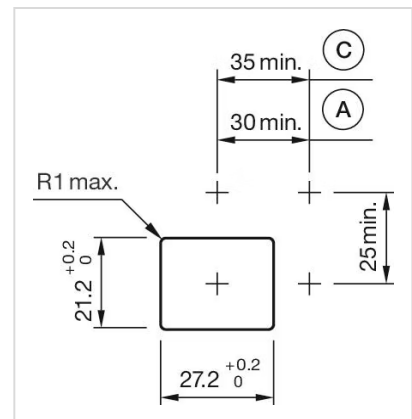


A = Plug-in terminal 2.8 mm x 0.5 mm  
C = Screw terminal  
E = Slow-make switching element  
F = Snap-action switching element

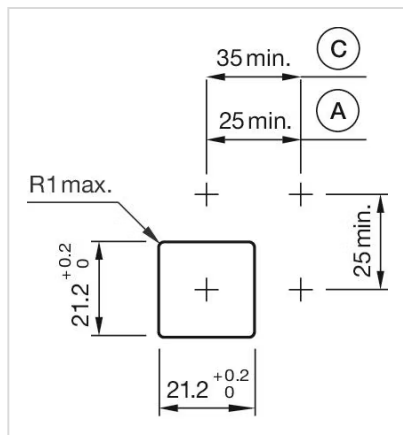
### Mounting cut-outs:



A = Solder/Plug-in terminal 2.8 mm x 0.5 mm  
B = Solder terminal  
C = Screw terminal

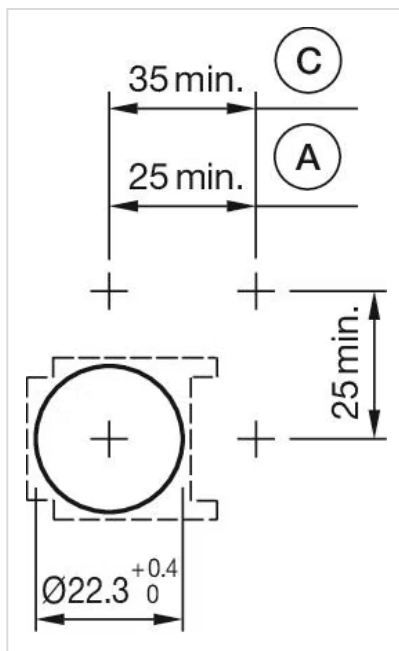


A = Solder/Plug-in terminal 2.8 mm x 0.5 mm  
C = Screw terminal



A = Solder/Plug-in terminal 2.8 mm x 0.5 mm

C = Screw terminal



A = Solder/Plug-in terminal 2.8 mm x 0.5 mm

C = Screw terminal