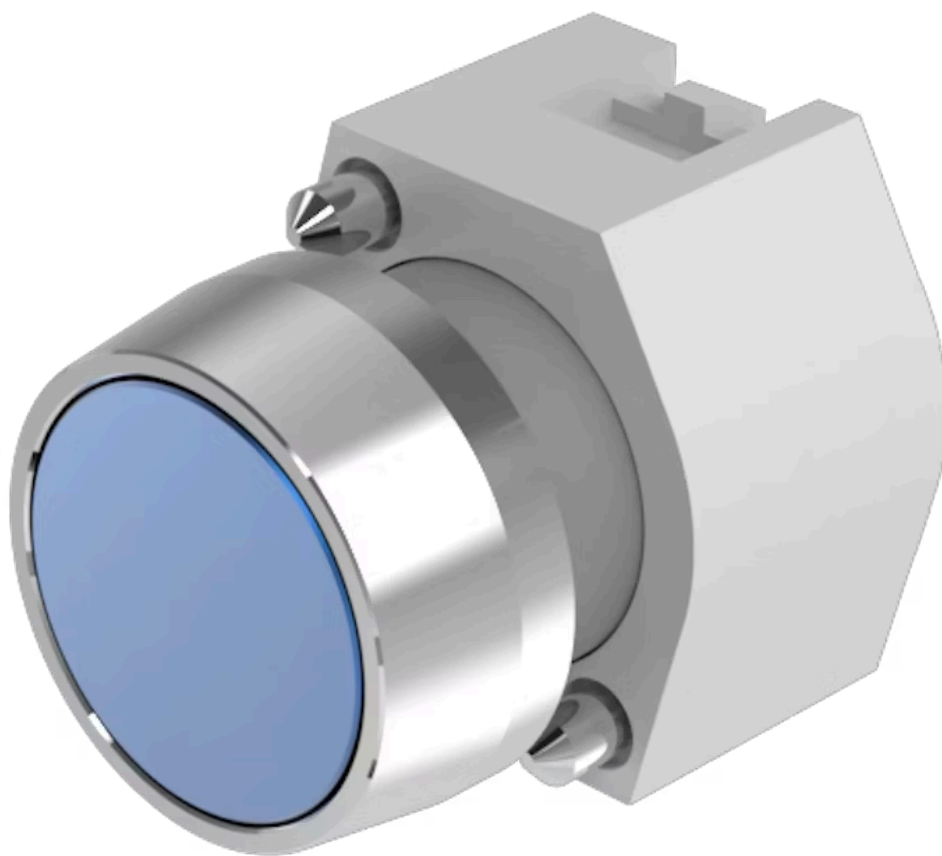


Actuator

704.041.6



<https://eao.com/p/704.041.6>

Your product:



704.041.6 Actuator

FRONT

| | |
|-----------------------|-----------|
| Front bezel material: | Aluminium |
| Front form: | round |
| Front bezel colour: | Nature |
| Front dimension: | Ø 29 mm |

MOUNTING

| | |
|---------|--------|
| Design: | raised |
|---------|--------|

OPERATING-/INDICATION PART

| | |
|--------------------|------------------|
| Lens optics: | opaque |
| Lens shape: | flush |
| Lens illumination: | non illuminative |
| Lens colour: | Blue |
| Lens material: | Aluminium |

ELECTRICAL CHARACTERISTICS

| | |
|------------|-------------------------------------------------------------------------------------------|
| Standards: | The switches comply with the "Standards for low-voltage switching devices" DIN EN 60947-1 |
|------------|-------------------------------------------------------------------------------------------|

MECHANICAL CHARACTERISTIC

| | |
|----------------------|-----------------------------|
| Operating Travel: | ca. 5.8 mm ± 0.2 mm |
| Operating force: | 8 N |
| Mechanical lifetime: | ≤3 Mio. cycles of operation |

Weight: 0.04 kg

Switching action: Maintained

AMBIENT CONDITION

Storage temperature: – 40 °C ... + 85 °C

IP Protection: IP65 front side

Operating temperature: – 40 °C ... + 55 °C

OTHER

max. number of switching elements: 3

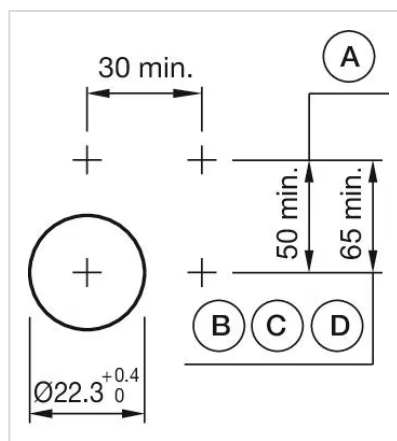
Hints: Frontring with protective cover to be mounted with a torque of 0.4 Nm onto actuator, Max. 3 switching elements can be clipped on

Short Description: Actuator, Ø 29 mm, flush, non illuminative, Blue, Aluminium, opaque, round, Nature, Aluminium, anodised, Maintained

Housing material: Plastic

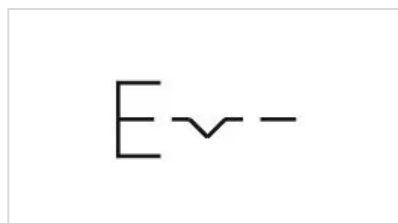
Housing colour: Grey

Mounting cut-outs:

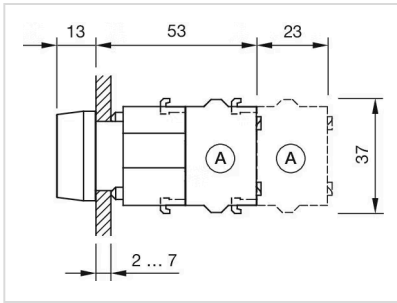


A = Screw terminal
B = Push-in terminal (PIT)
C = Plug-in terminal 6.3 mm x 0.8 mm
D = Double plug-in terminal 6.3 mm x 0.8 mm

Wiring diagrams:



Dimension drawings:



A = Screw terminal