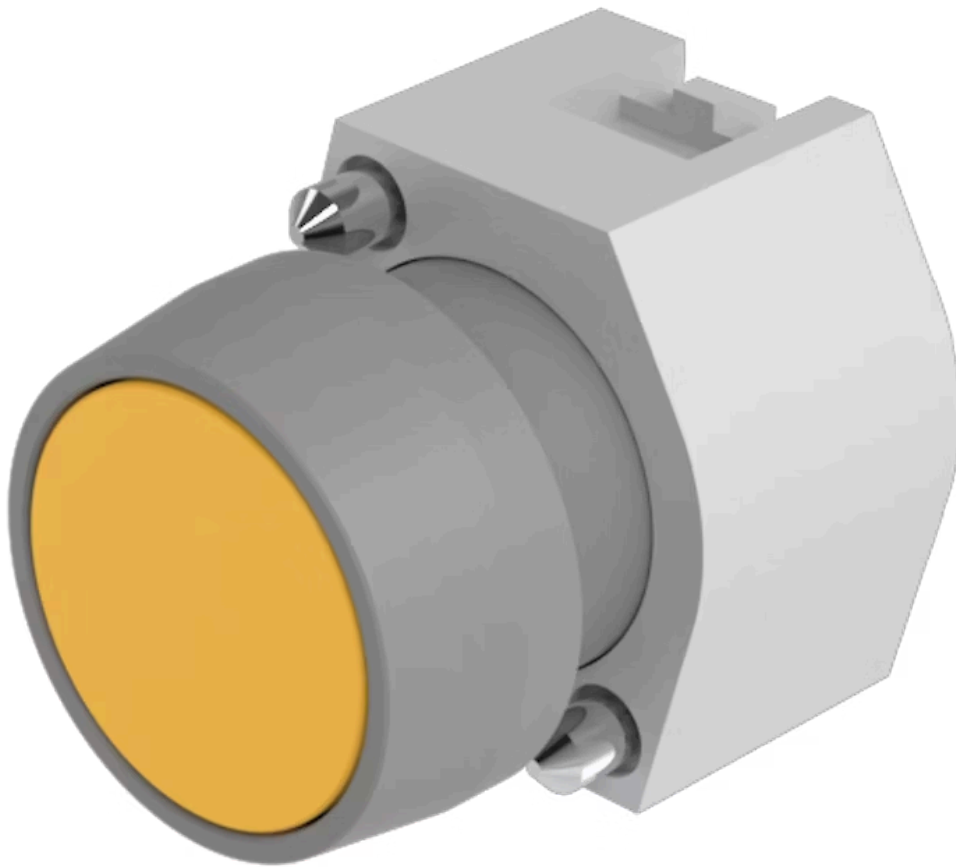


Actuator

704.040.4



<https://eao.com/p/704.040.4>

Your product:



704.040.4 Actuator

FRONT

Front form:	round
Front bezel material:	Plastic
Front bezel colour:	Grey
Front dimension:	Ø 29 mm

MOUNTING

Design:	raised
---------	--------

OPERATING-/INDICATION PART

Lens colour:	Yellow
Lens shape:	flush
Lens material:	Plastic
Lens illumination:	non illuminative
Lens optics:	transparent

ELECTRICAL CHARACTERISTICS

Standards:	The switches comply with the "Standards for low-voltage switching devices" DIN EN 60947-1
------------	---

MECHANICAL CHARACTERISTIC

Mechanical lifetime:	≤3 Mio. cycles of operation
Switching action:	Maintained
Operating force:	8 N

Operating Travel: ca. 5.8 mm ± 0.2 mm

Weight: 0.04 kg

AMBIENT CONDITION

Storage temperature: – 40 °C ... + 85 °C

IP Protection: IP65 front side

Operating temperature: – 40 °C ... + 55 °C

OTHER

max. number of switching elements: 3

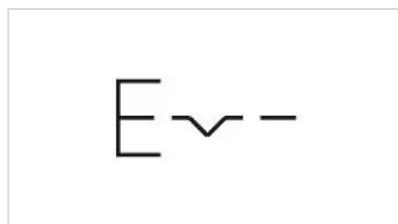
Housing colour: Grey

Short Description: Actuator, Ø 29 mm, flush, non illuminative, Yellow, Plastic, transparent, round, Grey, Plastic, Maintained

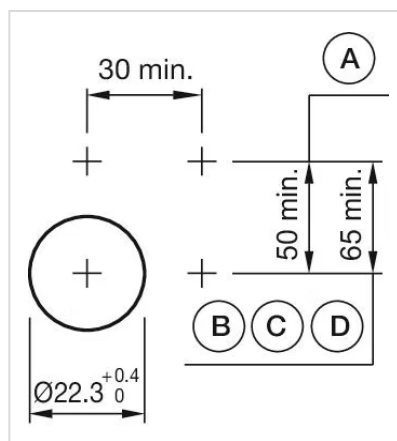
Housing material: Plastic

Hints: Frontring with protective cover to be mounted with a torque of 0.4 Nm onto actuator, Max. 3 switching elements can be clipped on

Wiring diagrams:

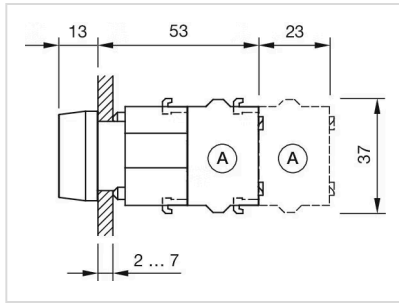


Mounting cut-outs:



A = Screw terminal
B = Push-in terminal (PIT)
C = Plug-in terminal 6.3 mm x 0.8 mm
D = Double plug-in terminal 6.3 mm x 0.8 mm

Dimension drawings:



A = Screw terminal