

# Actuator

704.632.1



<https://eao.com/p/704.632.1>

Your product:

---



## 704.632.1 Actuator

### OPERATING-/INDICATION PART

**Lens illumination:** illuminative

### ELECTRICAL CHARACTERISTICS

**Standards:** The switches comply with the "Standards for low-voltage switching devices" DIN EN 60947-1

### MECHANICAL CHARACTERISTIC

**Weight:** 0.009 kg

**Operating Travel:** ca. 5.8 mm ± 0.2 mm

**Mechanical lifetime:** ≤3 Mio. cycles of operation

**Operating force:** 8 N

**Switching action:** Maintained

### AMBIENT CONDITION

**Storage temperature:** – 40 °C ... + 85 °C

**Operating temperature:** – 40 °C ... + 55 °C

**IP Protection:** IP65 front side

### OTHER

**Hints:** Max. 3 switching elements can be clipped on

**max. number of switching elements:** 3

**Housing material:** Plastic

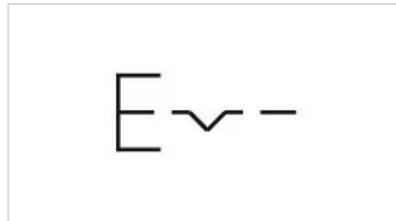
**Housing colour:**

Grey

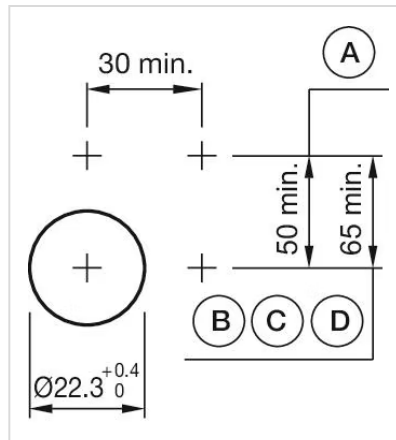
**Short Description:**

Actuator, illuminative, Maintained

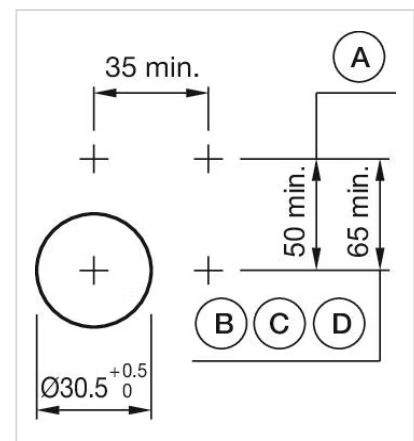
**Wiring diagrams:**



**Mounting cut-outs:**

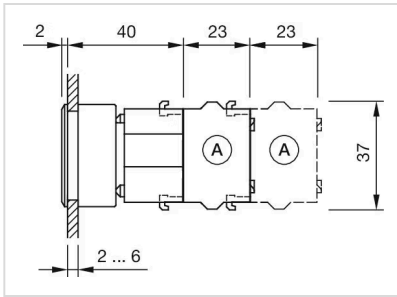


A = Screw terminal  
B = Push-in terminal (PIT)  
C = Plug-in terminal 6.3 mm x 0.8 mm  
D = Double plug-in terminal 6.3 mm x 0.8 mm

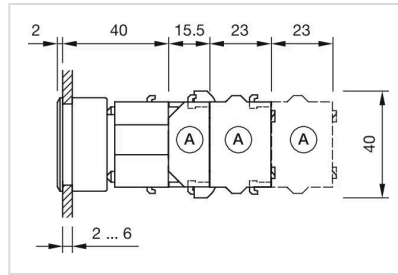


A = Screw terminal  
B = Push-in terminal (PIT)  
C = Plug-in terminal 6.3 mm x 0.8 mm  
D = Double plug-in terminal 6.3 mm x 0.8 mm

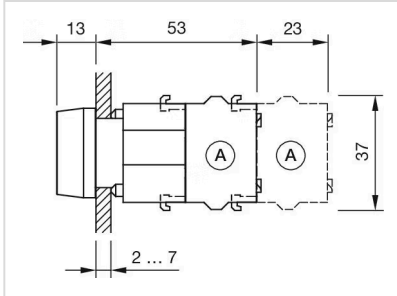
**Dimension drawings:**



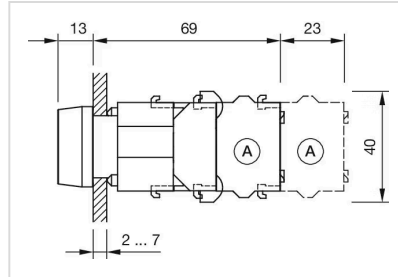
A = Screw terminal



A = Screw terminal



A = Screw terminal



A = Screw terminal