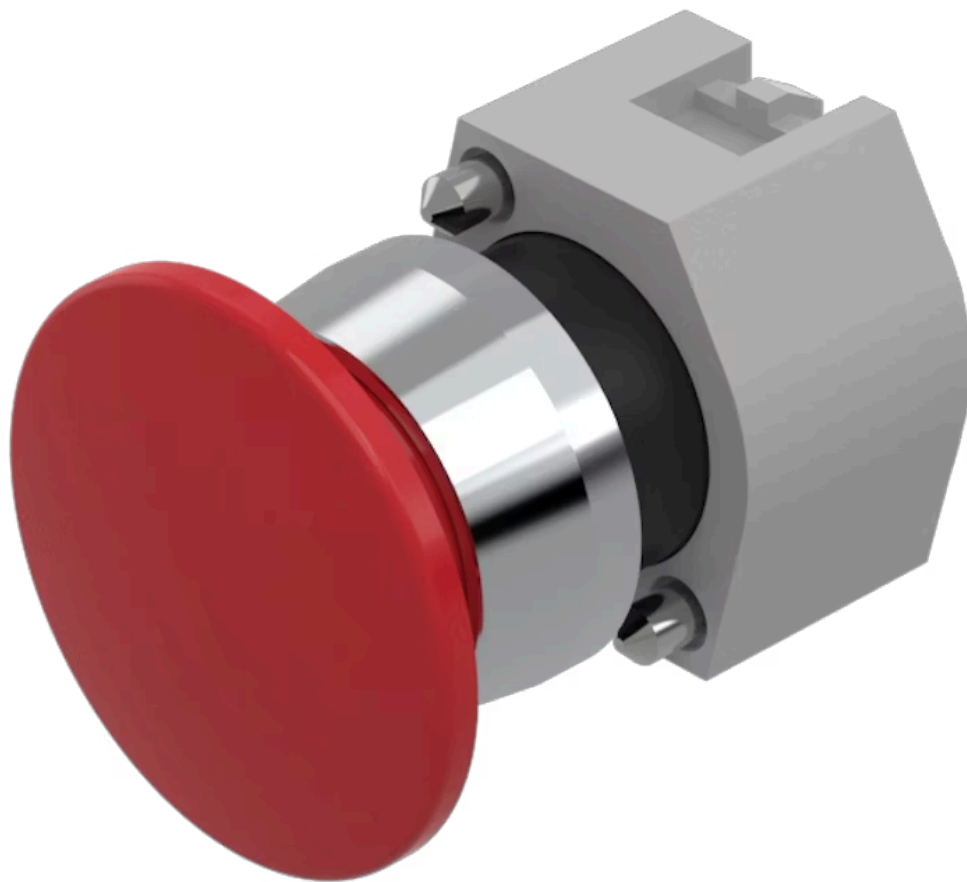


Actuator

704.075.3



<https://eao.com/p/704.075.3>

Your product:



704.075.3 Actuator

FRONT

| | |
|-----------------------|-----------|
| Front bezel material: | Aluminium |
| Front bezel colour: | Nature |
| Front dimension: | Ø 40 mm |

MOUNTING

| | |
|---------|--------|
| Design: | raised |
|---------|--------|

OPERATING-/INDICATION PART

| | |
|--------------------|------------------|
| Lens material: | Plastic |
| Lens colour: | Red |
| Lens shape: | mushroom-head |
| Lens optics: | opaque |
| Lens illumination: | non illuminative |

ELECTRICAL CHARACTERISTICS

| | |
|------------|---|
| Standards: | The switches comply with the "Standards for low-voltage switching devices" DIN EN 60947-1 |
|------------|---|

MECHANICAL CHARACTERISTIC

| | |
|-------------------|---------------------|
| Weight: | 0.047 kg |
| Operating Travel: | ca. 5.8 mm ± 0.2 mm |
| Switching action: | Maintained |
| Operating force: | 8 N |

Mechanical lifetime: ≤50 000 cycles of operation

AMBIENT CONDITION

IP Protection: IP65 front side

Storage temperature: – 40 °C ... + 85 °C

Operating temperature: – 40 °C ... + 55 °C

OTHER

Marking: Stop

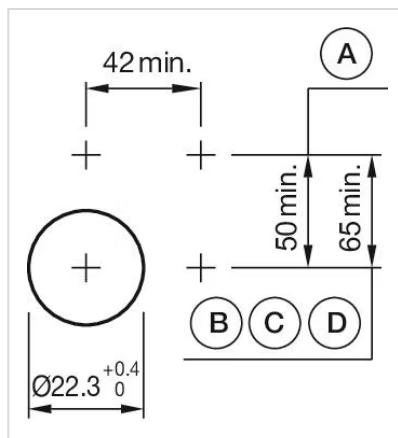
max. number of switching elements: 3

Housing colour: Grey

Short Description: Actuator, Ø 40 mm, mushroom-head, non illuminative, Red, Plastic, opaque, Nature, Aluminium, anodised, Maintained

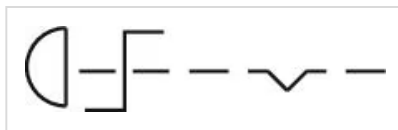
Housing material: Plastic

Mounting cut-outs:

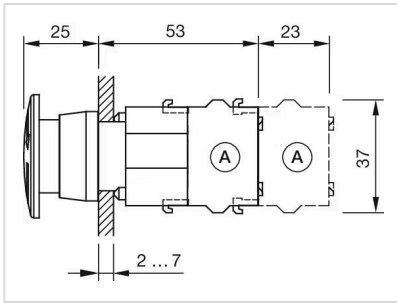


A = Screw terminal
B = Push-in terminal (PIT)
C = Plug-in terminal 6.3 mm x 0.8 mm
D = Double plug-in terminal 6.3 mm x 0.8 mm

Wiring diagrams:



Dimension drawings:



A = Screw terminal