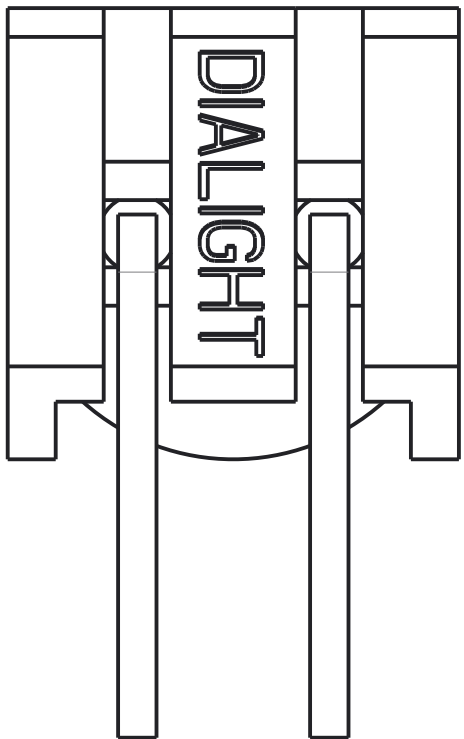
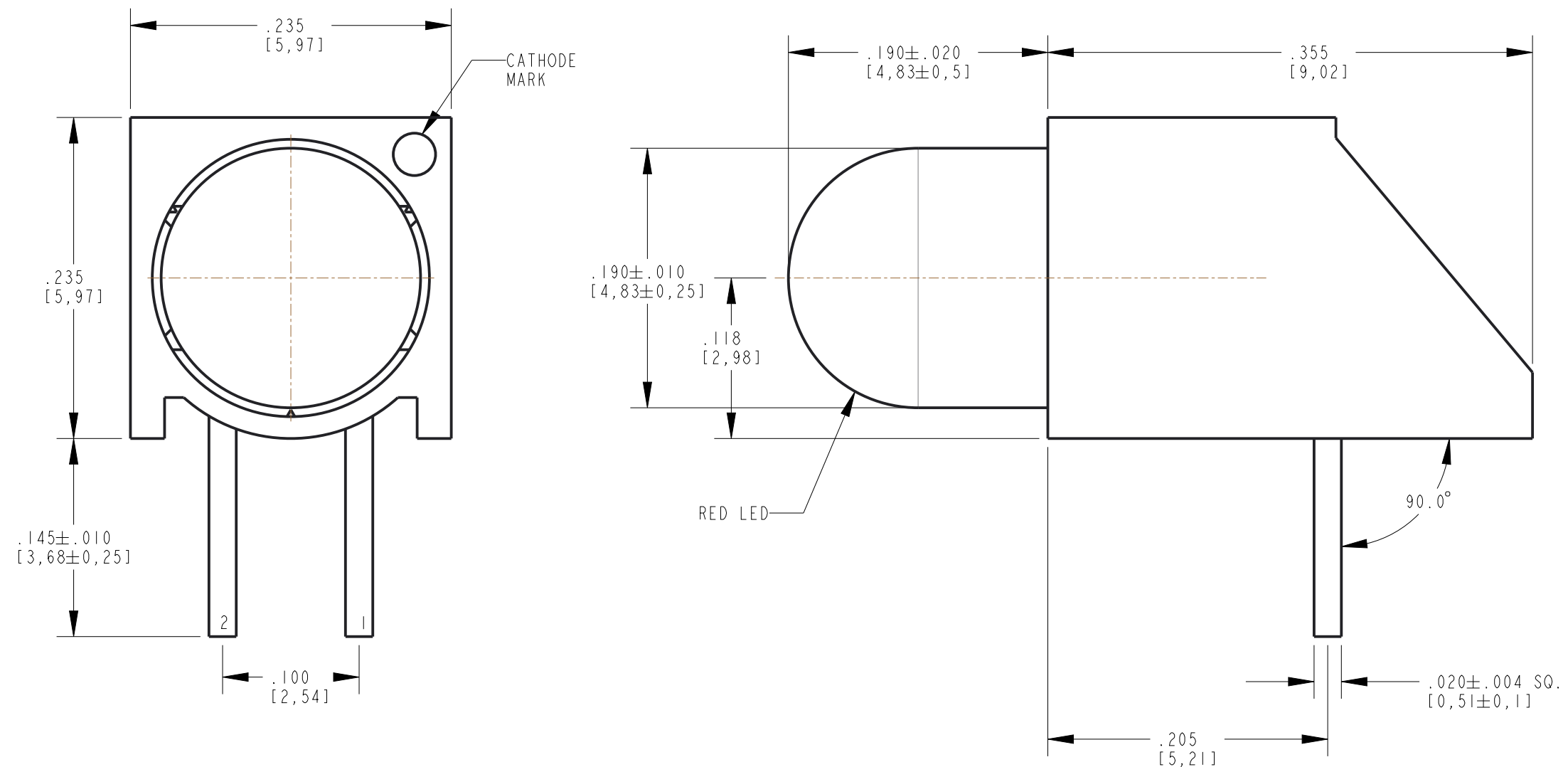
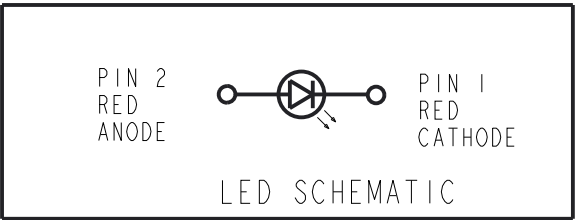


REV	ECN NO	REVISIONS	DRN	CKD	APP	QA	CM	DATE
A	105753	NEW RELEASE	LD	NO	CS			8-3-23

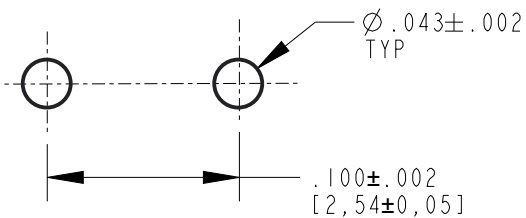


ABSOLUTE MAXIMUM RATINGS AT 25° C AMBIENT						VALUES	UNITS
POWER DISSIPATION						60	mW
CONTINUOUS FORWARD CURRENT						20	mA
PEAK FORWARD CURRENT (1/10 DUTY CYCLE, 10ms PULSE WIDTH)						60	mA
REVERSE VOLTAGE						3	V
REFLOW SOLDERING TEMPERATURE FOR 5 SEC.						260	°C
OPERATING TEMPERATURE						-25 TO +85	°C
STORAGE TEMPERATURE						-30 TO +100	°C

OPERATING CHARACTERISTICS AT 25° C AMBIENT										
LED COLOR	TEST CONDITION (mA)	LUMINOUS INTENSITY (mcd)			FORWARD VOLTAGE (V)		PEAK WAVELENGTH (nm)		REVERSE CURRENT (uA)	VIEWING ANGLE (DEGREES)
		TYP	MIN	TYP	MAX	TYP	MAX	TYP	MAX	TYP
RED	10	9	18	—	2.0	3.0	650	—	10	40



- NOTES:
- LED LEAD DIMENSIONS SHOWN ARE MEASURED AT HOUSING EXIT.
 - LEADS TO FIT INTO HOLES SPACED AS PER PATTERN.
 - PIN NUMBERS FOR REFERENCE ONLY, DESIGNATION NON-EXISTENT ON PART.
 - DIALIGHT PART NUMBER: 550-0001-853F.
 - THIS ASSEMBLY CONTAINS ELECTROSTATIC DISCHARGE SENSITIVE DEVICES (ESDS). MAINTAIN ALL PRECAUTIONARY MEASURES DURING ASSEMBLY, HANDLING, AND STORAGE IN ACCORDANCE WITH IPC-A-610.



THIS DRAWING AND THE CONTENTS HEREIN ARE CONFIDENTIAL AND THE SOLE PROPERTY OF DIALIGHT CORP. REPRODUCTION OF THIS DRAWING OR CONSTRUCTION OF ANY PARTS WITHIN THIS DRAWING ARE FORBIDDEN WITHOUT THE WRITTEN CONSENT OF DIALIGHT CORP.		
DIALIGHT CORP. INTERNAL REFERENCE ONLY = 3D MODEL : 5500001853F-A.3		
SCALE: 10.000	DRAWING NUMBER	REV
ALL DIM's: INCH (mm)	C-18680	A
TOLERANCES: UNLESS OTHERWISE SPECIFIED	TITLE	
FRACTIONS: ±1/64	CUSTOM 5MM LED CBI	
DECIMALS (.XX): ±.01	MATERIAL	
DECIMALS (.XXX): ±.005	-	
DECIMALS (.XXXX): ±.0005	FINISH	
ANGLES: ±1°	-	
FSCM 83330	Dialight 1501 ROUTE 34 SOUTH FARMINGDALE, NJ 07727 (732) 919-3119 www.dialight.com	
SHEET 1 OF 1	FAMILY TABLE:	