

NOTES:

1. DCP-HD19T-HD SHOWN IN EXPLODED VIEW. (*HDMI-STYLE CONNECTOR TO 20 PIN HEADER WITH THREADED COUPLING.)
2. THE *HDMI-STYLE CONNECTOR STYLE IS TYPE "A".
3. THE DIMENSION DOES NOT INCLUDE GASKET COMPRESSION.
4. THE HEADER PINOUT IS TYPICAL FOR ALL VERSIONS.
5. THE NUMBERS ARE FOR REFERENCE ONLY AND DO NOT APPEAR ON THE PART.
6. UNLESS OTHERWISE SPECIFIED, DIMENSIONS WITH TWO DECIMAL PLACES HAVE TOLERANCES OF ± 0.02 .

MATERIALS:

GASKET: ELASTOMER, BLACK
HEX NUT: THERMOPLASTIC, BLACK
HDMI PANEL HOUSING: THERMOPLASTIC, BLACK
HDMI CONNECTOR:
SHELL: COPPER ALLOY, TIN PLATED
CONTACTS: COPPER ALLOY, SELECTIVE GOLD PLATED
INSULATOR: THERMOPLASTIC, BLACK
20 PIN HEADER:
CONTACTS: COPPER ALLOY, GOLD PLATED
INSULATOR: THERMOPLASTIC, BLACK
PCB: FR-4

ELECTRICAL:

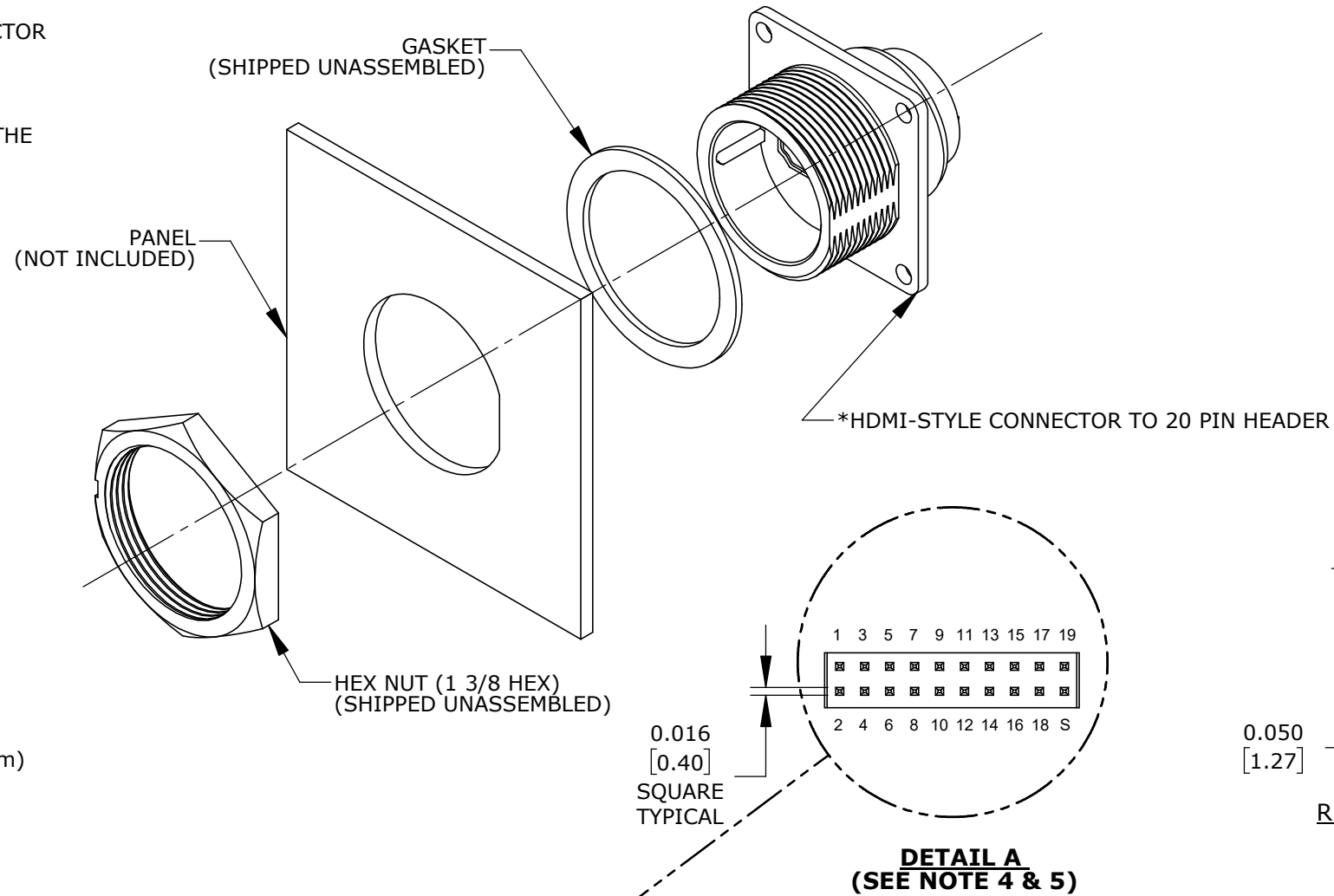
CURRENT RATING: 1A MINIMUM
CONTACT RESISTANCE: 50 MILLIOHMS MAXIMUM
INSULATION RESISTANCE: 10 MEGAOHMS MINIMUM (MATED)
DIELECTRIC WITHSTANDING VOLTAGE: 300V AC (MATED)

PRODUCT RATING:

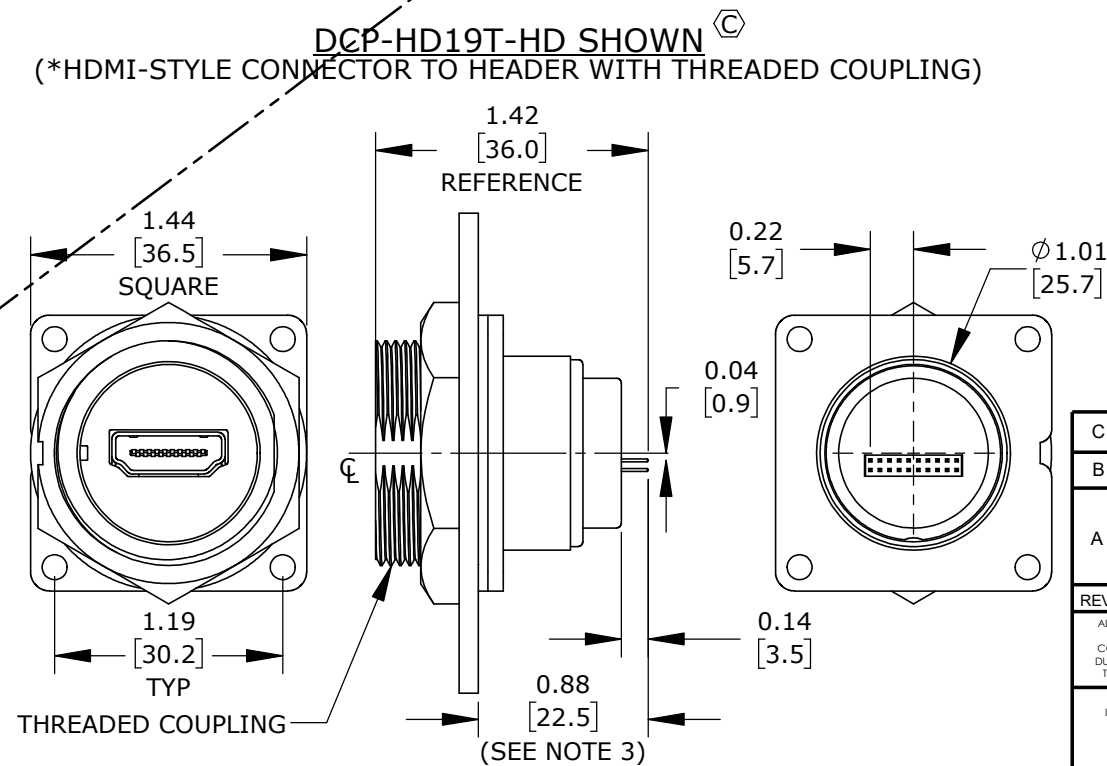
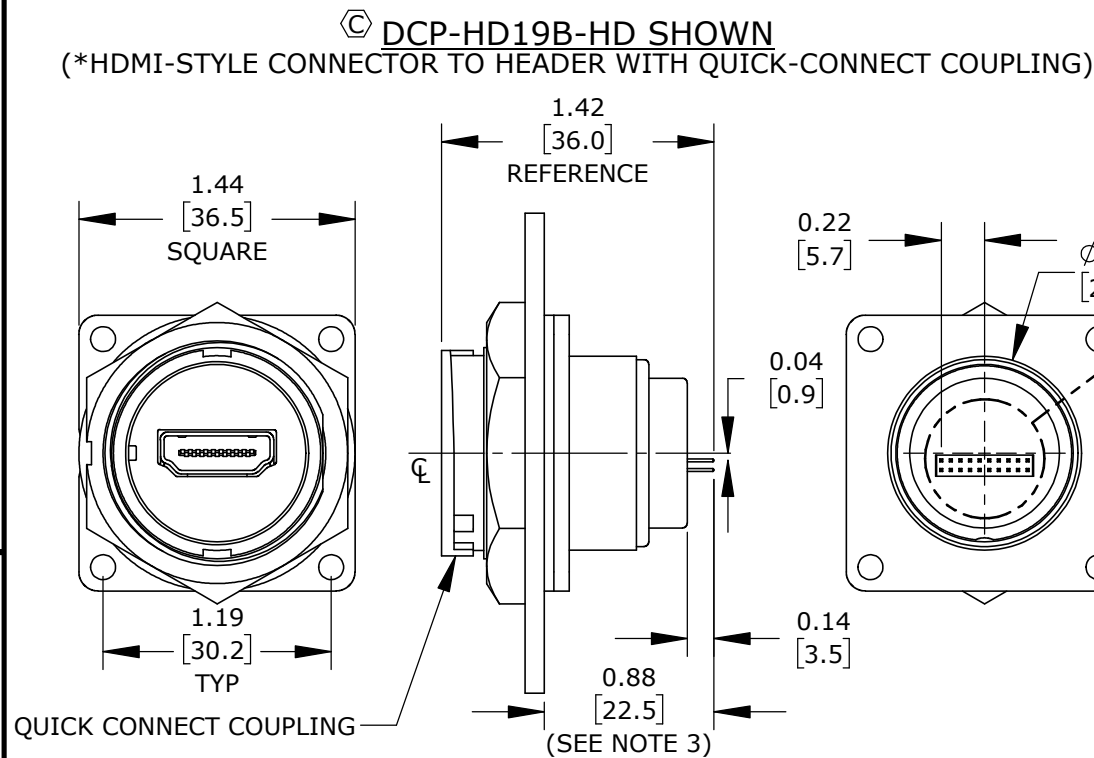
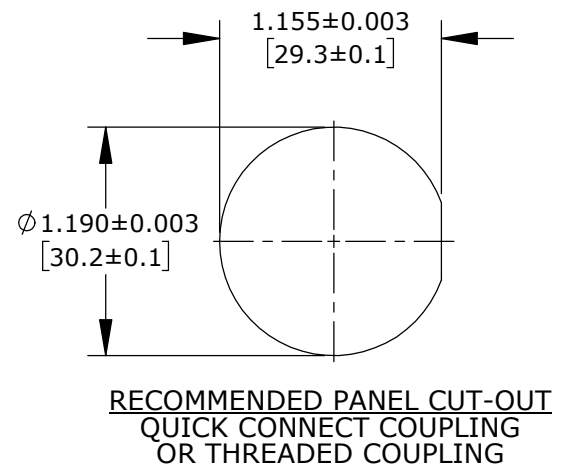
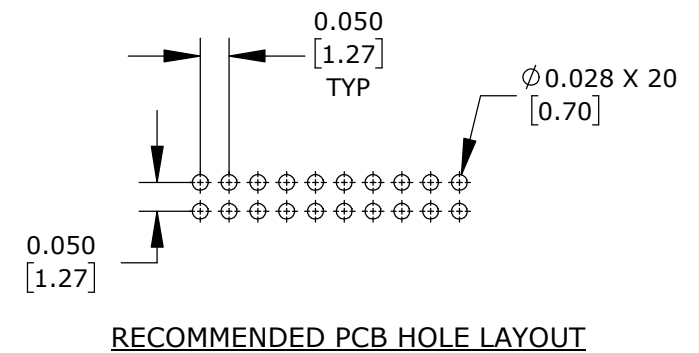
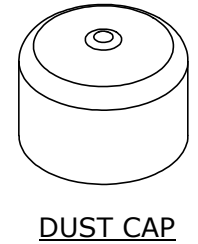
IP67 & IP68, NEMA 250 (6P), WHEN MATED

OTHER:

OPERATING TEMPERATURE: -20°C TO $+80^{\circ}\text{C}$ [-4°F TO $+176^{\circ}\text{F}$]
RECOMMENDED PANEL THICKNESS:
QUICK CONNECT COUPLING: 1/32" TO 3/16" (0.8mm to 4.8mm)
THREADED COUPLING: 1/32" TO 5/32" (0.8mm to 3.9mm)



PART NUMBER	COUPLING TYPE
DCP-HD19B-HD	QUICK CONNECT
DCP-HD19T-HD	THREADED



*HDMI IS A REGISTERED TRADEMARK OF HDMI LICENSING LLC CORPORATION

DIMENSIONS IN BRACKET [] ARE METRIC.

RoHS COMPLIANT

C	SS	07-26-21	DRAWING NUMBER WAS DCP-HDMIX-HD SERIES PER ECR 9593
B	MA	03-13-18	ADDED "*".....-STYLE" TO ALL REFERENCES OF HDMI PER DOR 12003 #3
A	AN	02-09-17	DRAWING RELEASED PER DCR 12003
	JGK	11-12-15	ADDED FLANGE HOLE DIMENSIONS.
	JGK	05-22-13	DRAWING CREATED PER PROJECT #12003.
REV.	INIT.	DATE	DESCRIPTION
ALL INFORMATION ILLUSTRATED IS THE PROPERTY OF "CONXALL CORPORATION". UNAUTHORIZED DUPLICATION OR DISTRIBUTION OF THIS DOCUMENT IS PROHIBITED.			ORIG. DRAWN BY: JGK DATE: 5/22/13 CHECKED BY:
ALL UNITS ARE IN FEET, INCHES, FRACTION OF INCHES AND DECIMALS. TOLERANCES: 3 PLACE DECIMALS ± 0.005 ANGLES $\pm 1^{\circ}$ FRACTIONS $\pm 1/16$ - CRITICAL CHARACTERISTIC FLAG PER SPEC. XXXX			APPROVED BY:
SCALE: NTS SIZE: B SHEET: 1 OF 1			TITLE: *HDMI-STYLE PANEL CONNECTOR *HDMI-STYLE TO 20 PIN HEADER DATA-CON-X CUSTOMER: STANDARD PRODUCT
FILE: DCP-HD19X-HD SERIES_CD DIRECTORY: SLW			PART NUMBER: DCP-HD19X-HD SERIES REV: c