

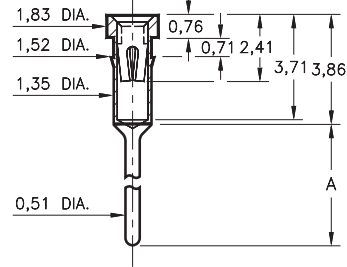
PIN RECEPTACLES

FOR 0,38 - 0,64 DIAMETER PINS

1005/1013/8898

XXXX-0-15-XX-3X-XX-04-0

Press-fit in 1,45 mounting hole
Annealed brass shell for auto-clinching *



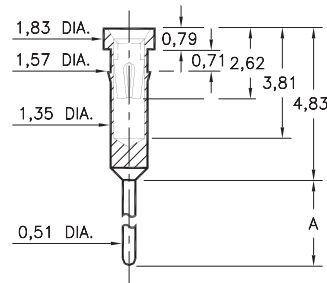
| Basic Part Number | Length A |
|-------------------|----------|
| 1005-0 | 3,51 |
| 1013-0 | 4,19 |
| 8898-0 | 5,69 |

* NOTE: 8898 is not annealed & not suitable for auto-clinching

0145/0146

014X-0-15-XX-30-XX-04-0

Press-fit in 1,5 mounting hole

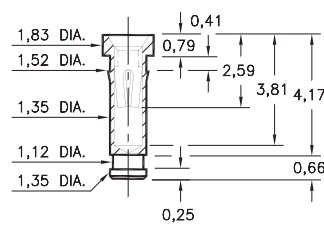


| Basic Part Number | Length A |
|-------------------|----------|
| 0145-0 | 7,62 |
| 0146-0 | 10,41 |

4378

4378-0-15-XX-30-XX-10-0

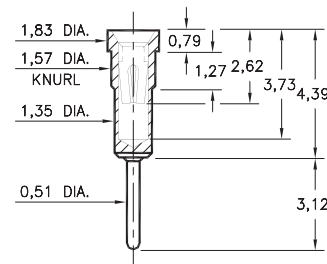
Press-fit in 1,45 mounting hole



0556

0556-0-15-XX-30-XX-04-0

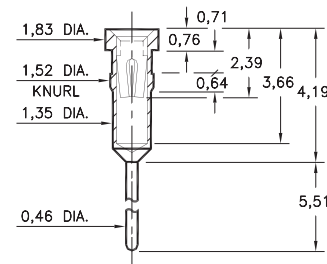
Press-fit in 1,5 mounting hole



1103

1103-0-15-XX-30-XX-04-0

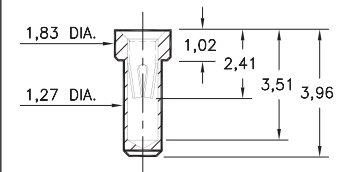
Press-fit in 1,45 mounting hole



9234

9234-0-15-XX-30-XX-10-0

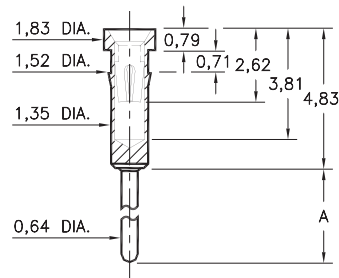
Solder mount in 1,32 min. mounting hole



0136/37/38/39/41/48/52

01XX-0-15-XX-30-XX-04-0

Press-fit in 1,45 mounting hole

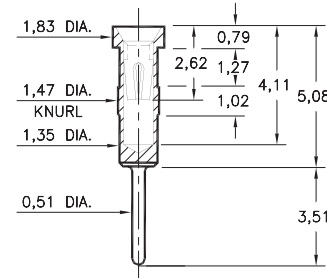


| Basic Part Number | Length A |
|-------------------|----------|
| 0136-0 | 30,86 |
| 0137-0 | 14,22 |
| 0138-0 | 5,33 |
| 0139-0 | 16,13 |
| 0141-0 | 17,78 |
| 0148-0 | 11,56 |
| 0152-0 | 10,41 |

0447

0447-0-15-XX-30-XX-04-0

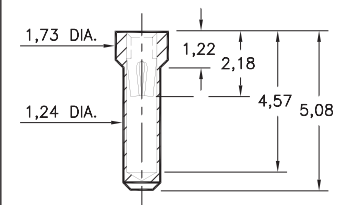
Press-fit in 1,42 mounting hole



5660

5660-0-15-XX-30-XX-10-0

Solder mount in 1,3 min. mounting hole



SPECIFICATIONS:

Shell Material: Brass Alloy 360, 1/2 Hard

Contact Material: Beryllium Copper Alloy 172, HT

Dimensions: Millimeters

Tolerances On: Lengths: ± 0,13

Diameters: ± 0,051

Angles: ± 2°



ORDER CODE: XXXX - X - 15 - XX - XX - XX - XX - 0

BASIC PART #

SPECIFY SHELL FINISH:

- 01 5,08µm TIN/LEAD OVER NICKEL
- ◆ 80 5,08µm TIN OVER NICKEL (RoHS)
- ◆ 15 0,25µm GOLD OVER NICKEL (RoHS)

SPECIFY CONTACT FINISH:

- 02 2,54µm TIN/LEAD OVER NICKEL
- ◆ 84 2,54µm TIN OVER NICKEL (RoHS)
- ◆ 27 0,76µm GOLD OVER NICKEL (RoHS)

SELECT CONTACT:

#30 or #32 CONTACT (DATA ON PAGE 253)

(For alternate contact choices, see groups B and C on page 248)

