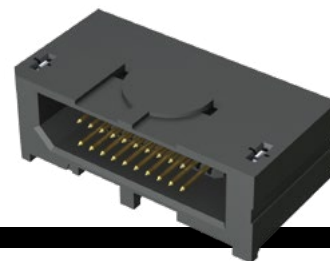
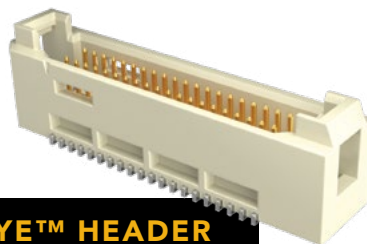


**(0.80 mm) .0315" PITCH • MICRO TIGER EYE™ HEADER**



TEM	1	NO. OF POSITIONS	02	DH1	PLATING OPTION	D	OPTION
		10, 15, 20, 25, 30, 35, 40, 45, 50 (Per Row) (Standard sizes)			-F = Gold Flash on contact, Matte Tin on tail		-A = Alignment Pin
					-L = 10 μ" (0.25 μm) Gold on contact, Matte Tin on tail		
					-S = 30 μ" (0.76 μm) Gold on contact, Matte Tin on tail		

**TEM-DH**

**Board Mates:**

SEM, SEML

**SPECIFICATIONS**

**Insulator Material:**

Black Liquid Crystal Polymer

**Terminal Material:**

Phosphor Bronze

**Plating:**

Au or Sn over  
50 μ" (1.27 μm) Ni

**Current Rating:**

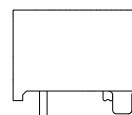
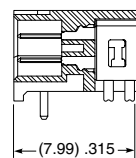
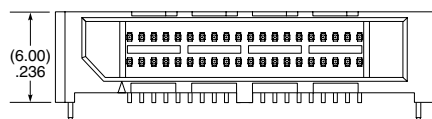
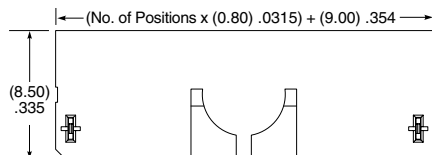
2.9 A per pin  
(2 pins powered)

**Voltage Rating:**

235 VAC/330 VDC

**Operating Temp Range:**

-55 °C to +125 °C



**-A OPTION**

**PROCESSING**

**Lead-Free Solderable:**

Yes

**SMT Lead Coplanarity:**

(0.10 mm) .004" max.

View complete specifications at: [samtec.com?TEM](http://samtec.com?TEM)

TEM	1	POSITIONS PER ROW	02	03.0	PLATING OPTION	D	L1	OPTIONS
		05, 10, 15, 20 (Standard sizes)			-G = 10 μ" (0.25 μm) Gold on contact, Gold Flash on tail		-L1 = Latching	-K = (5.50 mm) .217" DIA Polyimide film Pick & Place Pad

**TEM-L1**

**Cable Mates:**

SESDT

**SPECIFICATIONS**

**Insulator Material:**

Natural Liquid Crystal Polymer

**Terminal Material:**

Phosphor Bronze

**Plating:**

Au over 50 μ" (1.27 μm) Ni

**Current Rating:**

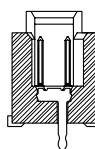
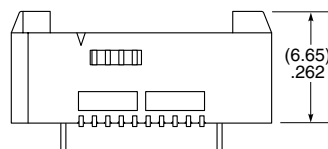
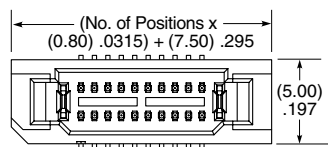
1.9 A per pin (2 pins powered)

**Voltage Rating:**

235 VAC/330 VDC

**Operating Temp Range:**

-55 °C to +125 °C



-TR  
= Tape & Reel

-FR  
= Full Reel  
Tape & Reel  
(must order max.  
quantity per reel;  
contact Samtec  
for quantity  
breaks)

**PROCESSING**

**Lead-Free Solderable:**

Yes

**SMT Lead Coplanarity:**

(0.10 mm) .004" max.

**Note:**

Some lengths, styles and  
options are non-standard,  
non-returnable

View complete specifications at: [samtec.com?TEM](http://samtec.com?TEM)