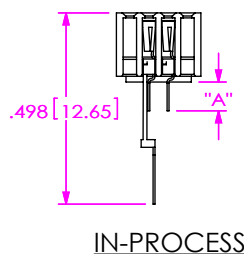
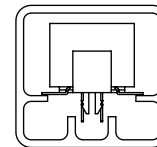


NOTE:
-P OPTION VIEW
TO BE PACKAGED IN PT-1-24-01-127 (TUBES)
AND (2) TP-03 (PLUG) PER TUBE



F:\DWG\MISC\MKTG\FOLC-1XX-MX-XX-Q-XX-X-XX-MKT.SLDDRW

NOTE:
PARTS WITHOUT -P OPTION TO BE PACKAGED
IN PT-1-24-05-38 (TUBES) AND (2) TP-03 (PLUGS) PER TUBE
-M2: PLACE SURFACE MOUNT LEADS ABOVE THE HORIZONTAL RIBS.
-M1 PLACE SURFACE MOUNT LEADS BELOW THE HORIZONTAL RIBS.



520 PARK EAST BLVD, NEW ALBANY, IN 47150
PHONE: 812-944-6733 FAX: 812-948-5047
e-Mail info@SAMTEC.com code 55322

DESCRIPTION:
.050 X .050 CENTERLINE 4 ROW MIXED TECH. SOCKET STRIP

DWG. NO.

FOLC-1XX-MX-XX-Q-XX-X-XX

BY: TIM PLUMMER 03-29-96 SHEET 1 OF 1