

TABLE I

SHELL SIZE	A	B	C	D	E	F
1	1.328	.610	±.005	.375	.60	.36
2	1.656	.610	1.312	.500	.93	.36
3	2.204	.610	1.852	.750	1.47	.36
4	2.844	.610	2.500	.750	2.12	.36
5	2.750	.720	2.406	1.000	2.03	.48
6	2.844	.784	2.500	1.000	2.12	.58

TABLE II

SYM	FINISH DESCRIPTION
M	ELECTROLESS NICKEL

REVISIONS

SYM.	DESCRIPTION	DATE	APPROVED
A	RELEASE	10/11/11	N.F.

PART NUMBER DEVELOPMENT

EXAMPLE: 557 T 554 M 3 S T

PRODUCT SERIES ——— T ——— M ——— S ——— T ———

ANGLE FUNCTION ——— T ———

T=TOP

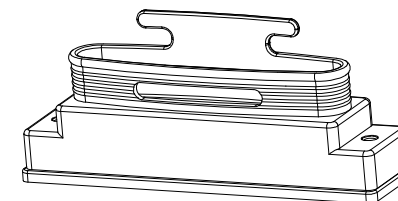
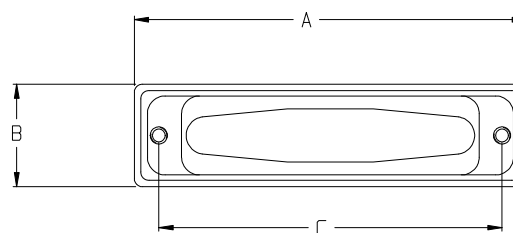
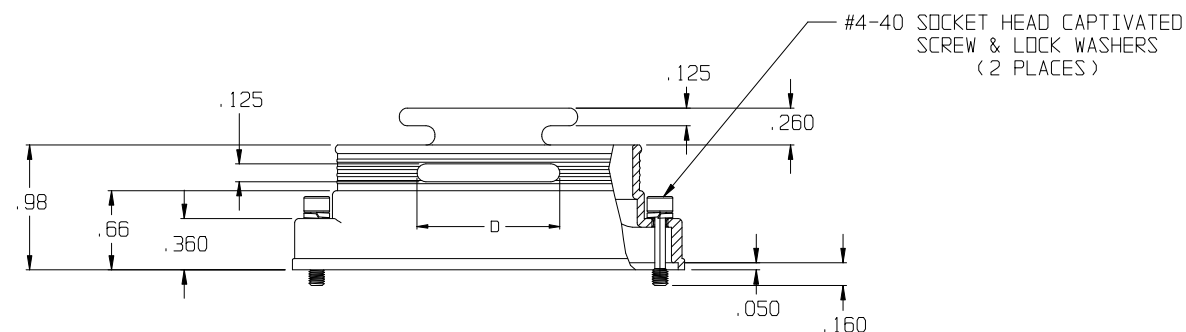
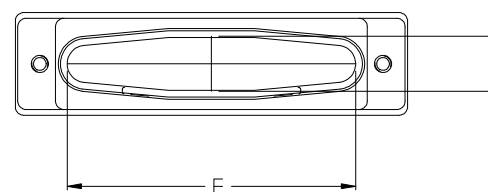
BASIC NO ———

FINISH SYM, TABLE II ———

SHELL SIZE, TABLE I ———

SLOT (OMIT FOR NONE) ———



QWIK-TY OPTION (OMIT FOR NONE) ———



NOTES:

- ASSEMBLY IDENTIFIED WITH MANUFACTURER'S NAME AND P/N, SPACE PERMITTING.
- GLENAIR 600 SERIES BACKSHELL ASSEMBLY TOOLS ARE RECOMMENDED FOR ASSEMBLY AND INSTALLATION.
- MATERIAL/FINISH :
ADAPTER - AL ALLOY/SEE TABLE II
JACKSCREW - CRES/PASSIVATED

THIS COPYRIGHTED DOCUMENT IS THE PROPERTY OF GLENAIR, INC. AND IS FURNISHED ON THE CONDITION THAT IT IS NOT TO BE DISCLOSED, REPRODUCED IN WHOLE OR IN PART, OR USED TO SOLICIT QUOTATIONS FROM COMPETITIVE SOURCES, OR USED FOR MANUFACTURE BY ANYONE OTHER THAN GLENAIR, INC. WITHOUT WRITTEN PERMISSION FROM GLENAIR, INC. THE INFORMATION HEREIN HAS BEEN DEVELOPED AT GLENAIR'S EXPENSE AND MAY BE USED FOR ENGINEERING EVALUATION AND INCORPORATION INTO TECHNICAL SPECIFICATIONS AND OTHER DOCUMENTS WHICH SPECIFY PROCUREMENT OF PRODUCTS FROM GLENAIR, INC.

UNLESS OTHERWISE SPECIFIED DIMENSIONS ARE IN INCHES TOLERANCES: FRACTIONS ± 1/16 DECIMALS .XX ± .03 .XXX ± .015 ANGLES ± 2°	DRAWN	S. AKOPIAN	05/05/11		1211 AIR WAY GLENDALE CALIFORNIA 91201		CAD 2011 [®]
	CHECK	S. AKOPIAN	05/05/11				
	ENGR	N. FUERTES	05/05/11				
	 APPROVED				BANDING BACKSHELL WITH OPTIONAL QWIK-TY		
	 APPROVED						
RELEASE DATE 10/11/11 ORIGINAL RELEASE DATE							
DO NOT SCALE THIS DRAWING				CODE IDENT. NO.	SIZE	557-554	REV
				06324	C		A
B/F 11-7610	P/C 55	NON REPARABLE COMMERCIAL ITEM		SCALE N/A	WEIGHT N/A	SHEET 1 OF 1	