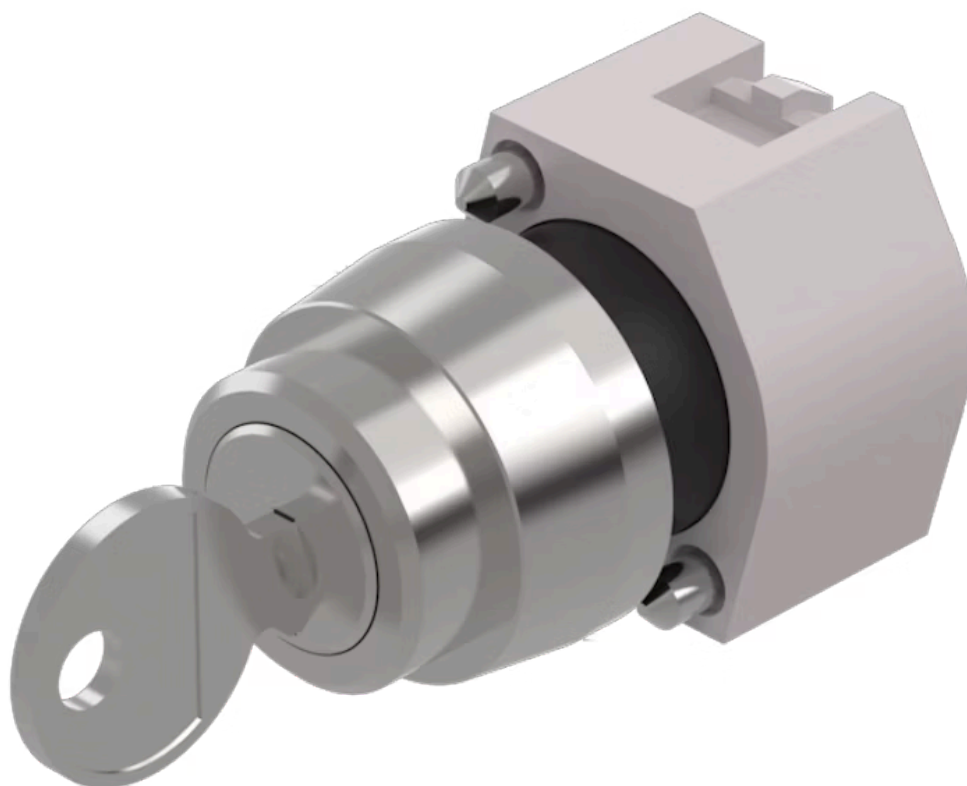


# Actuator

704.115.0



<https://eao.com/p/704.115.0>

Your product:

---



## 704.115.0 Actuator

### FRONT

Front dimension:	Ø 29 mm
Front bezel colour:	Nature
Front bezel material:	Aluminium

### MOUNTING

Design:	raised
---------	--------

### ELECTRICAL CHARACTERISTICS

Standards:	The switches comply with the "Standards for low-voltage switching devices" DIN EN 60947-1
------------	---

### MECHANICAL CHARACTERISTIC

Switching angle:	42° left / 42° right
Switching positions:	3 positions
Mechanical lifetime:	≤50 000 cycles of operation
Weight:	0.07 kg
Switching action:	Momentary - Rest (a) - Momentary

### AMBIENT CONDITION

IP Protection:	IP65 front side
Storage temperature:	- 40 °C ... + 85 °C
Operating temperature:	- 40 °C ... + 55 °C

OTHER

**max. number of switching elements:**

3

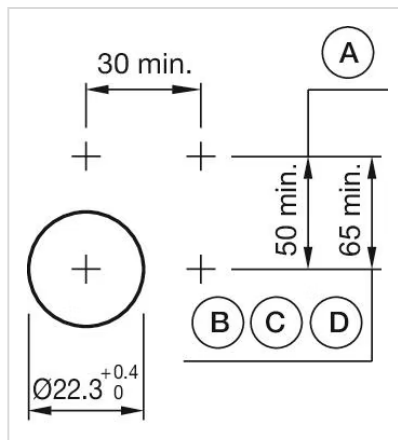
**Short Description:**

Actuator, Ø 29 mm, Nature, Aluminium, Momentary - Rest (a) - Momentary

**Hints:**

The standard lock Ronis 251, Further lock numbers on request, Max. 3 switching elements can be clipped on

**Mounting cut-outs:**

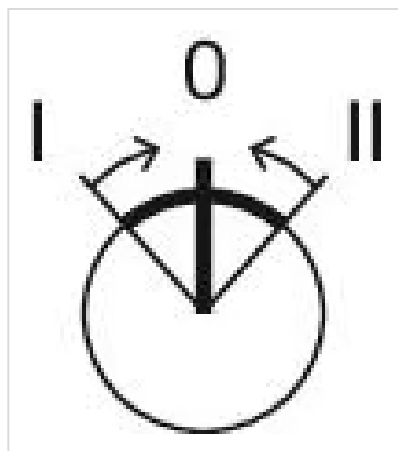


A = Screw terminal  
B = Push-in terminal (PIT)  
C = Plug-in terminal 6.3 mm x 0.8 mm  
D = Double plug-in terminal 6.3 mm x 0.8 mm

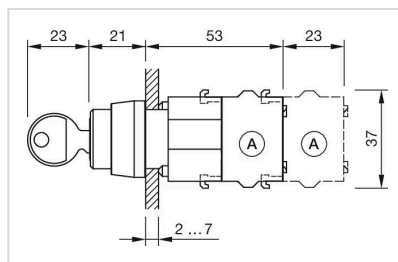
**Wiring diagrams:**



**Switching positions:**



**Dimension drawings:**



A = Screw terminal