

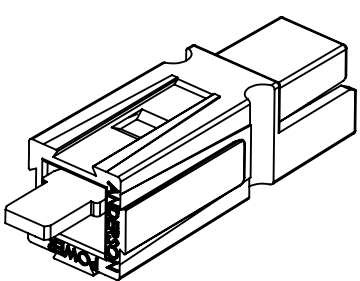
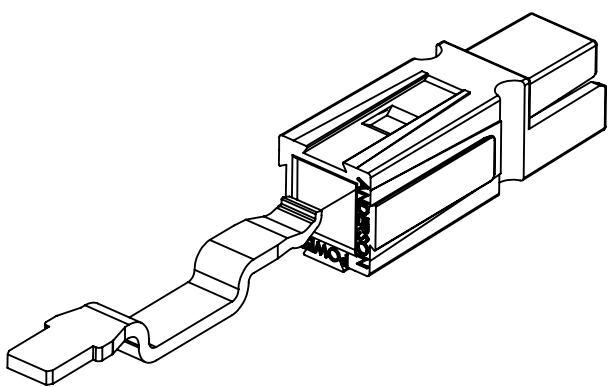
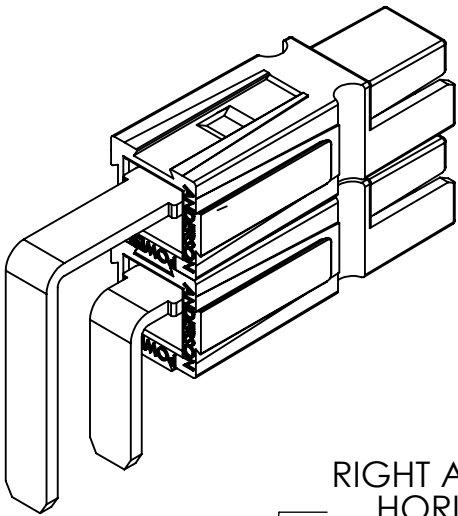
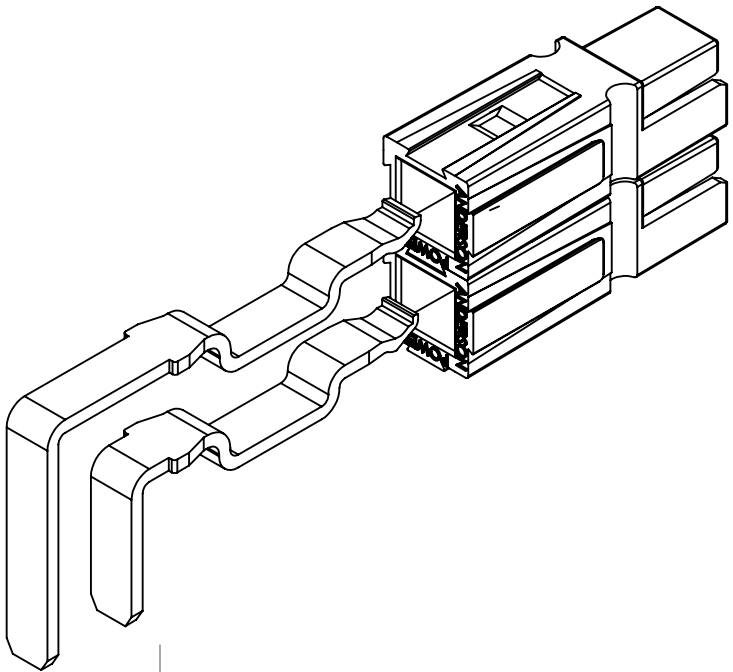
THE INFORMATION CONTAINED IN THIS DRAWING IS THE SOLE PROPERTY OF ANDERSON POWER PRODUCTS. ANY REPRODUCTION IN PART OR WHOLE WITHOUT THE WRITTEN PERMISSION OF ANDERSON POWER PRODUCTS IS PROHIBITED.

Copyright 2006

ANDERSON POWER PRODUCTS RESERVES THE RIGHT TO ALTER PRODUCT TYPES, THEIR TECHNICAL DATA, DIMENSION, STYLE AND ACCESSORIES WITHOUT PRIOR NOTIFICATION.

RIGHT ANGLE CONTACT

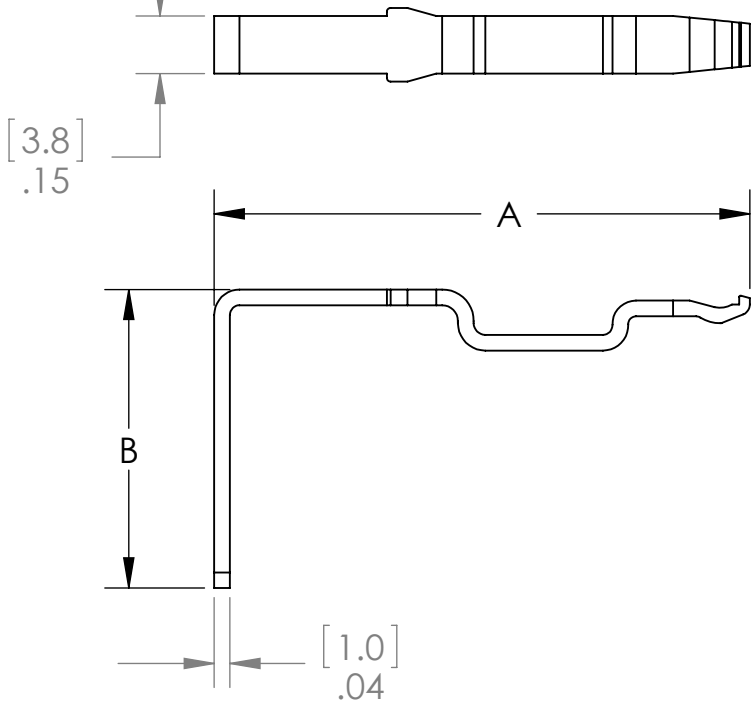
VERTICLE CONTACT



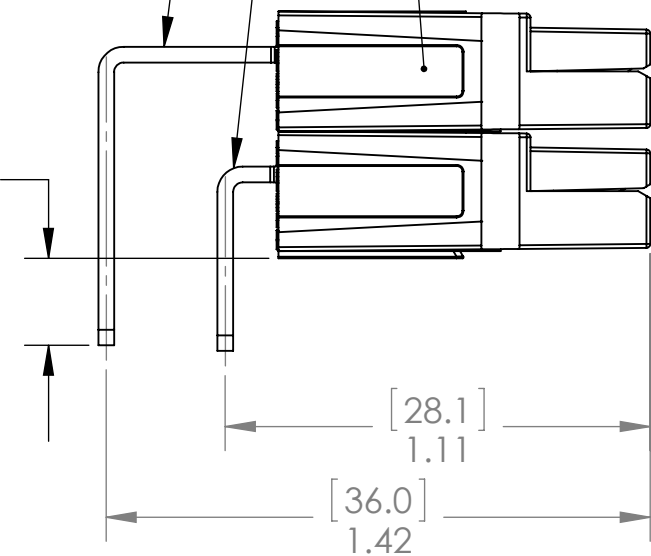
RIGHT ANGLE CONTACT
HORIZONTAL (TOP)
CAT. NO. 1337G1

RIGHT ANGLE CONTACT
HORIZONTAL (BOTTOM)
CAT. NO. 1336G1

PP15/45
HOUSINGS
(1327 SERIES)



[5.7]
.23

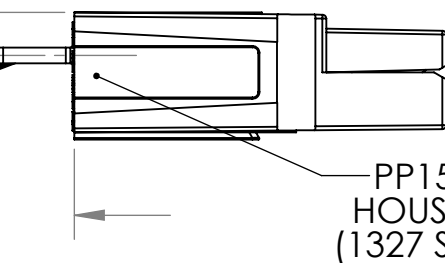
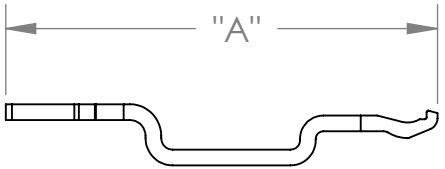


[3.8]
.15

[1.0]
.04

[2.8]
.11

[5.1]
.20



STRAIGHT CONTACT
VERTICAL MOUNT
CAT. NO. 1335G1

PP15/45
HOUSINGS
(1327 SERIES)

NOTES:

- FOR USE WITH 1327 SERIES HOUSINGS (SOLD SEPARATELY)
- SEE DATA SHEET MOUNTING ACCESSORIES
- SEE SHEET 2 FOR SAMPLE PCB LAYOUT AND BLOCKING CONFIGURATIONS
- MATERIAL:
CONTACT: COPPER ALLOY PLATED WITH 200 MICRO-INCHES MIN. MATTE TIN

6	ECRN-15763	TWE	1/15/2015
5	ECRN-15089	TWE	3/26/12
4	ECRN 14312 ADD PCB LAYOUT TOLERANCES	AMS	8/26/08
3	ECRN 14124 - ADD SHEET 2	AMS	5/2/07
2	ECRN 14129 - ALTER APPEARANCE OF LEAD-IN	AMS	3/30/07
REV.	DESCRIPTION	APPRV	DATE
REVISIONS			

PART NUMBER	DESCRIPTION	"A"		"B"	
		IN	MM	IN	MM
1335G1	HP PCB, STRAIGHT	1.12	28.5	N/A	
1336G1	HP PCB, RIGHT-ANGLE, BOTTOM	1.08	27.5	0.47	11.9
1337G1	HP PCB, RIGHT ANGLE, TOP	1.40	35.4	0.78	19.7

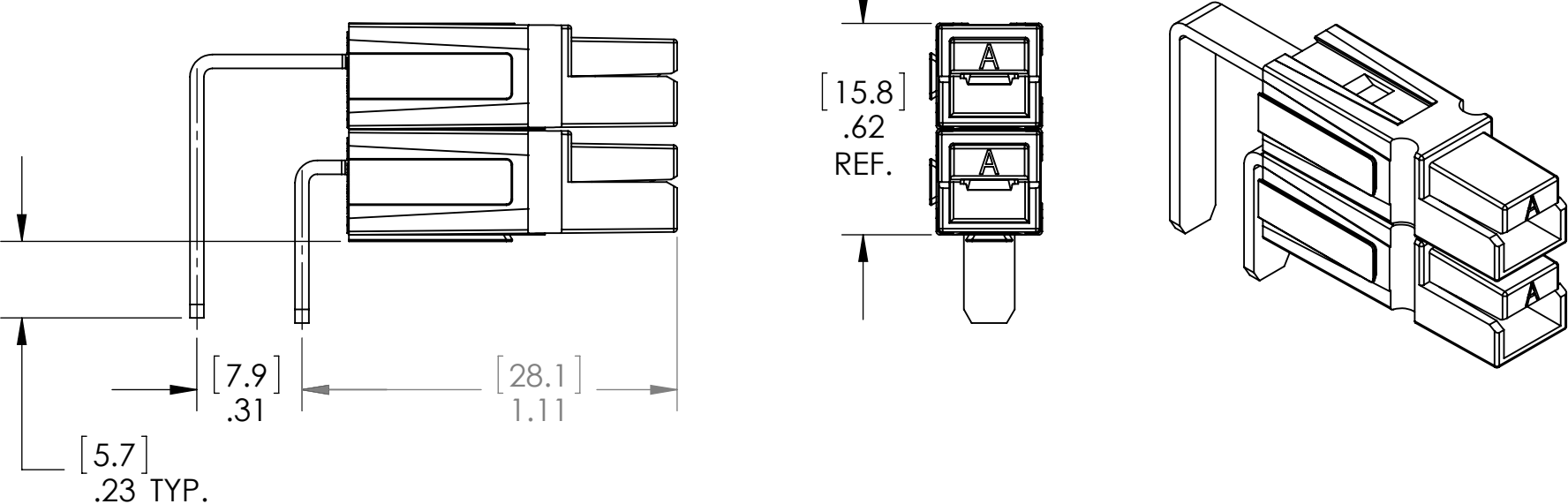
DIMENSIONS ARE IN:		INCH [MM]		APPROVALS		ANDERSON POWER PRODUCTS	
UNLESS OTHERWISE STATED				DRAWN		TITLE HIGH POWER PCB SERIES 45 AMP PCB POWERPOLE™ SALES OUTLINE DRAWING	
TOLERANCES:				CPP	2/9/2006		
DECIMALS (INCH)		DECIMALS (MM)	ANGLES	CHECKED			
.XX ± .02		.X ± .5	±2°	BD	2/10/2006		
SURFACE FINISH:				MFG APPRV		SIZE B	
MACHINED 128µin [3.2µ]				DAM	2/10/2006		
MOLDED 64µin [1.6µ]				QC APPRV			
MATERIAL: SEE NOTE				UFN	2/10/2006	DWG NO. B02021S	
FINISH: SEE NOTE				ENG APPRV		REV. 6	
				MAW	2/10/2006	SCALE NONE	
				-CAD GENERATED DRAWING- DO NOT MANUALLY UPDATE DO NOT SCALE		CADFILE 02502	
						SHEET 1 OF 2	

THE INFORMATION CONTAINED IN THIS DRAWING IS THE SOLE PROPERTY OF ANDERSON POWER PRODUCTS. ANY REPRODUCTION IN PART OR WHOLE WITHOUT THE WRITTEN PERMISSION OF ANDERSON POWER PRODUCTS IS PROHIBITED.

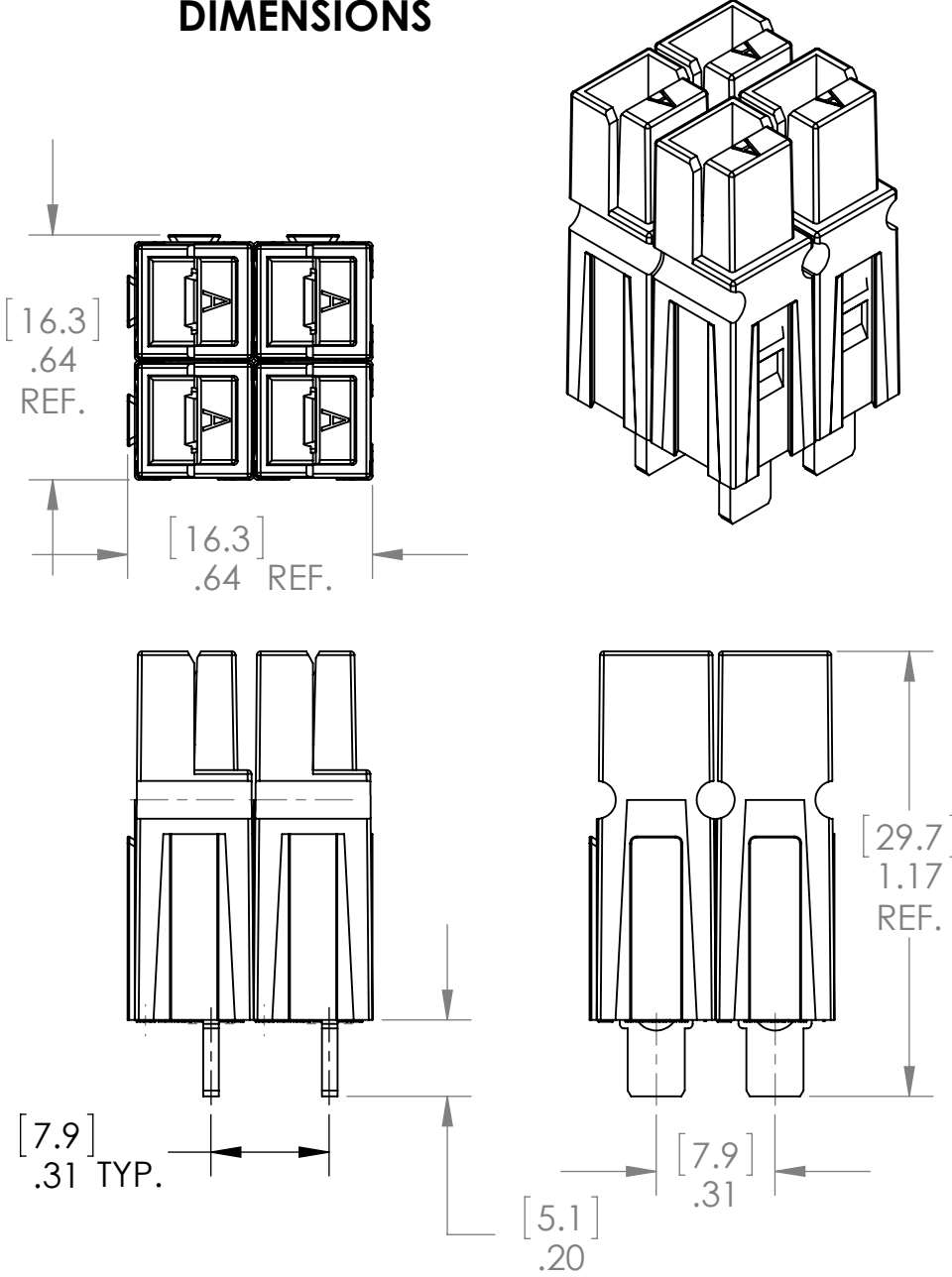
Copyright 2006

ANDERSON POWER PRODUCTS RESERVES THE RIGHT TO ALTER PRODUCT TYPES, THEIR TECHNICAL DATA, DIMENSION, STYLE AND ACCESSORIES WITHOUT PRIOR NOTIFICATION.

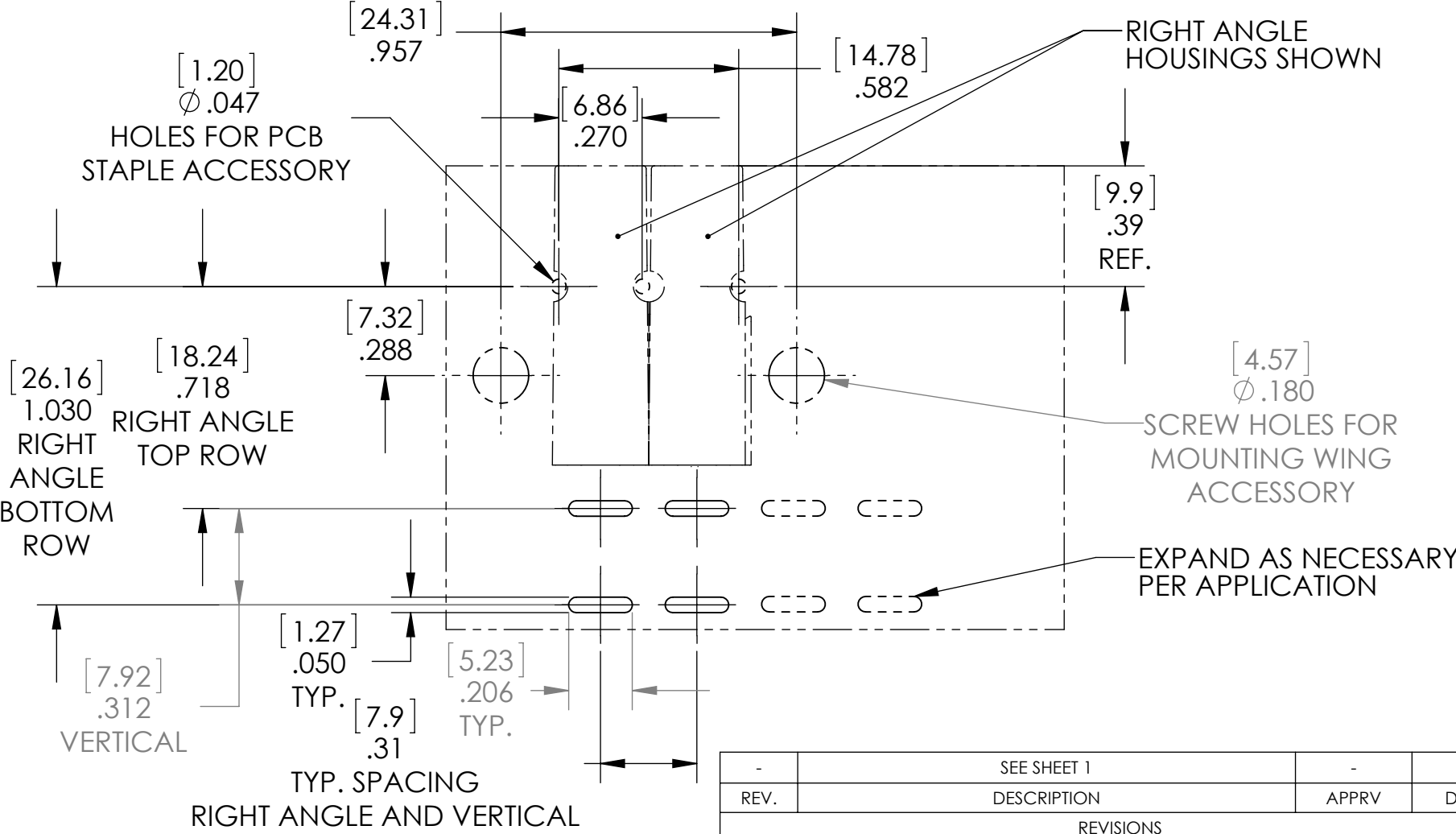
RIGHT ANGLE STACKED HOUSING






VERTICAL BLOCKED HOUSING DIMENSIONS



SAMPLE PCB LAYOUT



DIMENSIONS ARE IN:		INCH [MM]		APPROVALS		 ANDERSON POWER PRODUCTS					
UNLESS OTHERWISE STATED				DRAWN		TITLE HIGH POWER PCB SERIES 45 AMP PCB POWERPOLE™ SALES OUTLINE DRAWING					
TOLERANCES:				CPP 2/9/2006							
DECIMALS (INCH)		DECIMALS (MM)		CHECKED							
.XX ± .02		.X ± .5		BD 2/10/2006							
ANGLES		±2°									
SURFACE FINISH:				MFG APPRV		SIZE B		DWG NO. B02021S		REV. 6	
MACHINED		128µin [3.2µ] ✓		DAM 2/10/2006							
MOLDED		64µin [1.6µ] ✓		QC APPRV							
MATERIAL: SEE NOTE				UFN 2/10/2006							
FINISH: SEE NOTE				ENG APPRV							
				MAW 2/10/2006		SCALE NONE		CADFILE 02502		SHEET 2 OF 2	
				-CAD GENERATED DRAWING- DO NOT MANUALLY UPDATE DO NOT SCALE							
3rd ANGLE PROJECTION											