

G-6  
DOUBLE CONTACT  
BAYONET BASE

See lamp ratings  
on page K.

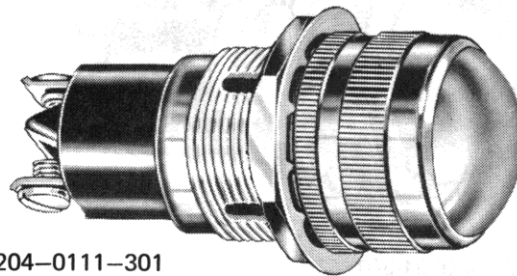
# Large Incandescent Indicators

FOR MOUNTING IN 1" CLEARANCE HOLE  
FOR 6 TO 32V OPERATION

These series indicator lights meet or exceed requirements of MIL-L-3661.

For materials and finishes of products in this group, see page 38D.

Recognized under the component  
program of Underwriters'  
Laboratories Inc.  
75W., 125V.



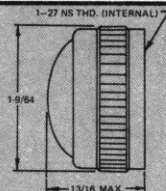
51-3204-0111-301  
Convex lens

## WITH SCREW-ON LENS CAPS

### 51 SERIES

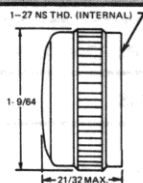
#### BASE PART NUMBERS

#### CAP PART NUMBERS



#### CONVEX

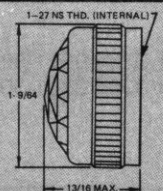
51-0111-300 back frosted  
51-0131-300 unfrosted



#### FLAT

51-0211-300 back frosted  
51-0231-300 unfrosted

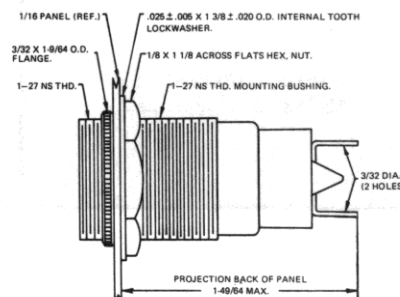
For legends on flat faced lens, see page P.



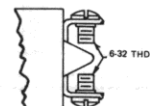
#### FACETED

51-0431-300 unfrosted

#### fixed solder



#### fixed screw



51-3406-01-301

51-3206-01-301

#### COMPLETE ASSEMBLY PART NUMBERS

51-3404-0111-301  
51-3404-0131-301

51-3204-0111-301  
51-3204-0131-301

51-3404-0211-301  
51-3404-0231-301

51-3204-0211-301  
51-3204-0231-301

51-3404-0431-301

51-3204-0431-301

Part numbers shown in gray are normally  
in inventory at your Dialight Distributor.

Part numbers listed in this catalog designate products with RED lens.  
For ordering lens colors other than red, consult chart on page 2D.