

REV. C

PLOT SCALE: .125/ DIMSCALE: .1000

DIMENSIONS ARE IN INCHES

UNLESS OTHERWISE NOTED

TOLERANCES ARE:

ONE PLACE DECIMALS $\pm .1$ [2.54] THREE PLACE DECIMALS $\pm .005$ [.13]
 TWO PLACE DECIMALS $\pm .01$ [.25] FOUR PLACE DECIMALS $\pm .0020$ [.051]

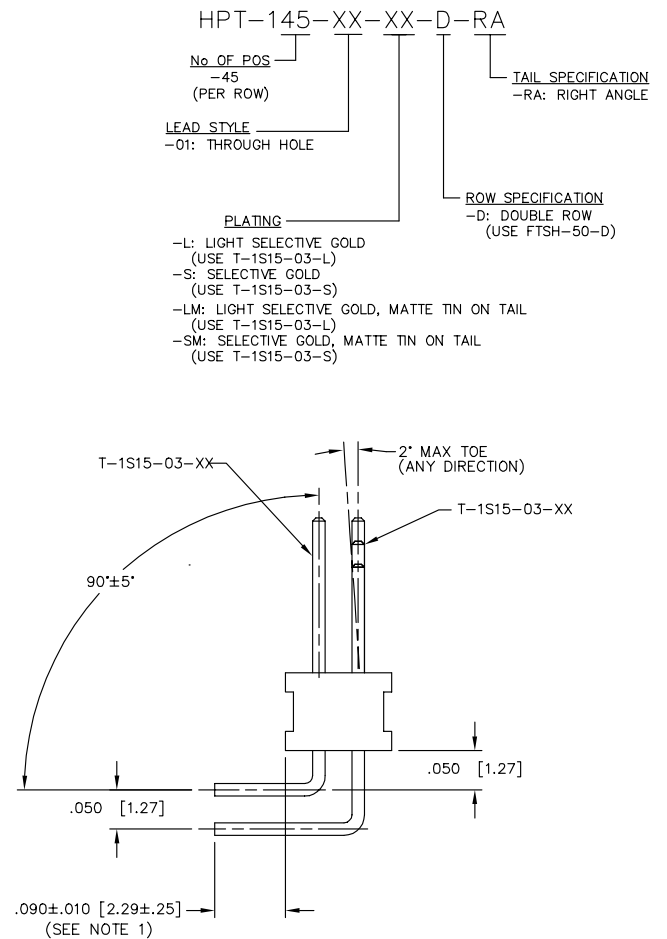
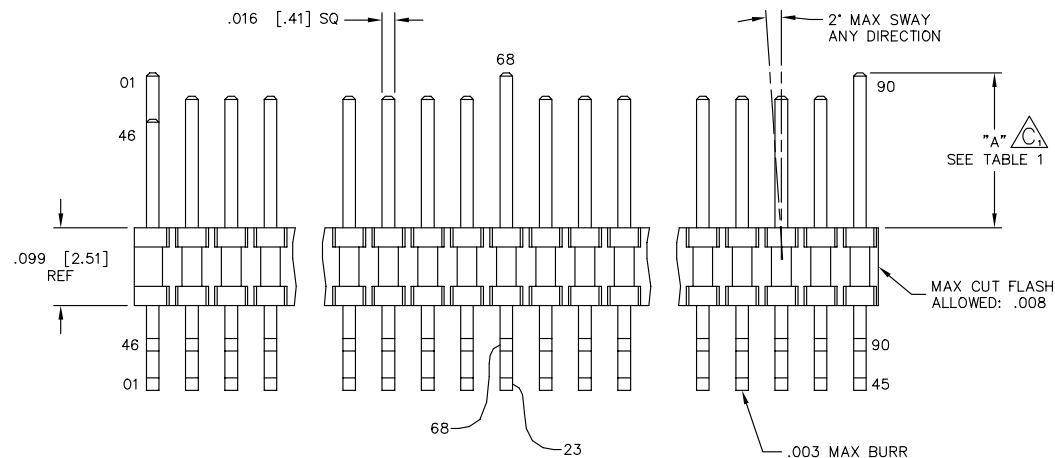
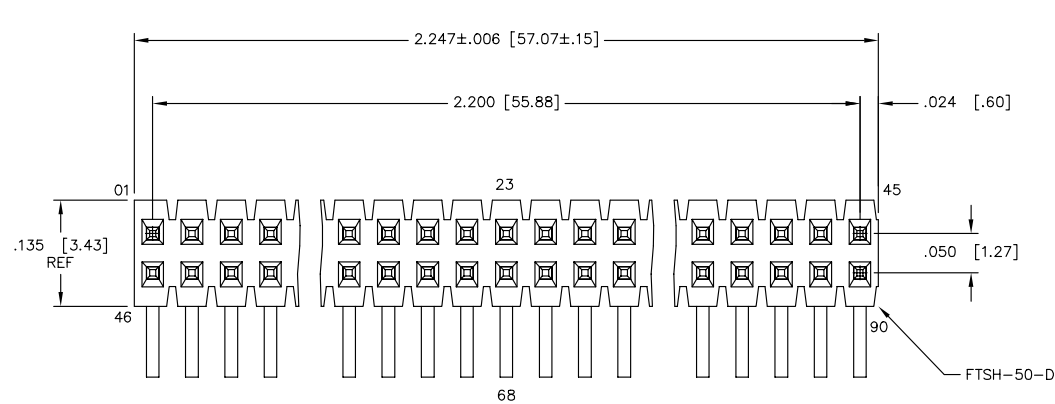
ANGLES
 $\pm 2^\circ$

TITLE:

.050 x .050 C.L.
 HOT PLUGGABLE
 TERMINAL STRIP

DWG NO:

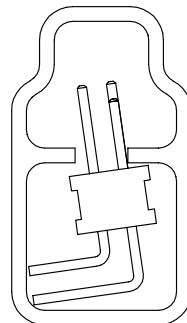
HPT-145-XX-XX-D-RA
 SHEET 1 OF 1



PACKAGING VIEW

PT-1-24-01-09
 TP-24

PARTS TO BE PACKAGED IN TUBE
 AS SHOWN.



SCALE: .75x

PROPRIETARY NOTE
 THIS DOCUMENT CONTAINS INFORMATION
 CONFIDENTIAL AND PROPRIETARY TO
 SAMTEC INC. AND SHALL NOT BE
 REPRODUCED OR TRANSFERRED TO
 OTHER DOCUMENTS OR DISCLOSED TO
 OTHERS OR USED FOR ANY PURPOSE
 OTHER THAN THAT FOR WHICH IT WAS
 OBTAINED WITHOUT THE EXPRESSED
 WRITTEN CONSENT OF SAMTEC INC.

TABLE 1	
POSITION NUMBER	"A"
45, 46	.138 [3.51]
01, 23, 68, 90	.197 [5.00]
ALL OTHERS	.167 [4.24]

NOTES:

1. TERMINALS TO BE SHEARED TO MEET DIMENSION SPECIFICATION.
2. MINIMUM PUSHOUT FORCE: .5 LB.
3. PARTS TO BE PACKAGED IN TUBE AS SHOWN.

samtec

810 PROGRESS BLVD. NEW ALBANY, INDIANA 47150
 PHONE (812) 944-6733 P.O. BOX 1147
 CODE 55322

MADE BY:

PURVIS 09-19-97

HPT-145-XX-XX-D-RA
 SHEET 1 OF 1

EXISPROD\ASSEMBLY
 050\HPT145ASM