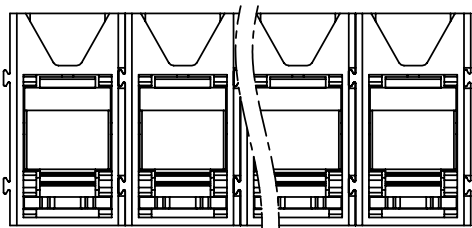


SECTION A-A



SIGN	DATE	DESCRIPTION	APPROVER
△	2010.12.20	The design is changed	Chen Bo
△	07/29'11	The torque is changed & Add is the "cULus" mark	Runner
△	07/29'11	The voltage rating is changed from 600V to 300V	Runner
△	07/29'11	The withstanding voltage is changed from 2.2KV to 1.6KV	Runner

THIS IS CAD DRAWING, DO NOT REVISE MANUALLY!!!

Material:

- Item a Terminal housing : Thermoplastic (UL 94V-0)
- Item b Clamp : Brass, Ni plated.
- Item c Wire guard solder pin (Back single row) : Copper , Tin plated
- Item d Terminal screw: Steel Zinc plating"-"/slot type

Electrical

- △ ● Voltage rating : 300V
- Current rating : 65A
- Wire range :
 - Solid wire (AWG) : 6-20
 - Stranded wire (AWG) : 6-20
- △ ● Torque (LB-In.) : 12.2
- Screw : M4.5
- △ ● Wire strip length : 10~11mm
- △ ● Withstanding voltage : 1.6KV
- Operating temperature : -40°C+115°C
- Soldering temperature : 250°C+10°C/5 Sec
- △ ● Critical dimension:
- Safety Approval:

KP xx 2 1 x 1 xxxx G

- 02 2 Poles
 - 03 3 Poles
 -
 - 12 12 Poles
- Color
- 0 Black (RAL9005)
 - 2 Red (RAL3001/D)
 - 3 Orange(RAL2011/P)
 - 4 Yellow(RAL1018/A)
 - 5 Green(RAL6018/T)
 - 6 Blue (RAL5015/A)
 - 8 Grey(RAL7035/D)
- RoHS
Pb<40,000ppm
- 0000:"@"Logo (Standard)
000A:"ANYTEK"Logo
Any special item by customer request, please contact sales department.

ANYTEK

CUSTOMER COPY

ALL RIGHTS RESERVED. REPRODUCTION OR ISSUE TO THIRD PARTIES IN ANY FORM WHATSOEVER IS NOT PERMITTED WITHOUT WRITTEN AUTHORITY FROM THE PROPRIETOR. PROPERTY OF ANYTEK TECHNOLOGY CO., LTD

TITLE		KP 10.16 Series Back single row (Without cover)				
PART NO.		KPxx21x1xxxxG		DWG NO.		8KP0102
APPROVED		CHECKED	DESIGNED	DRAWN	CUST NO.	
		Runner	Chen Bo			Tolerance
		2011.07.29	2010.12.20			X. ±0.50
						X.X ±0.30
						X.XX ±0.10
						X° ±1°

Poles	01	02	03	04	05	06	07	08	09	10	11	12
Dim L	10.16	20.32	30.48	40.64	50.80	60.96	71.12	81.28	91.44	101.60	111.76	121.92
Dim B		10.16	20.32	30.48	40.64	50.80	60.96	71.12	81.28	91.44	101.60	111.76
TOL	±0.10		±0.20			±0.30			±0.40			