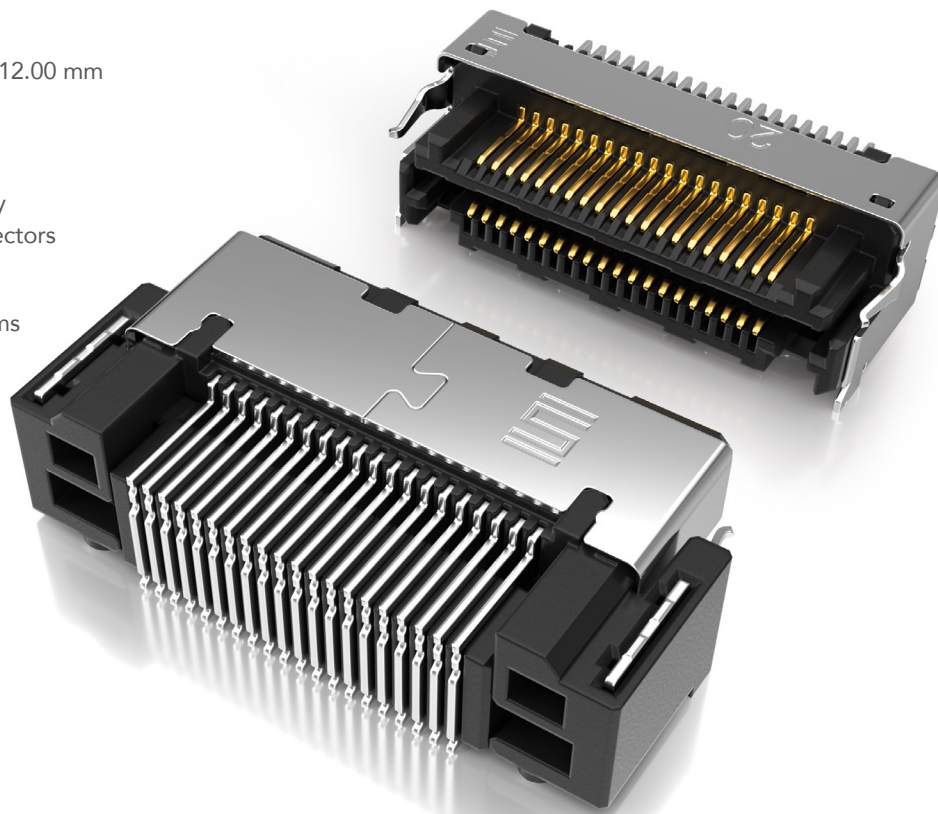


FINE PITCH SELF MATING CONNECTORS

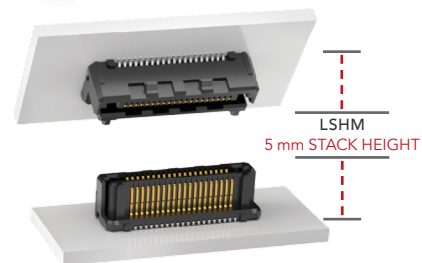
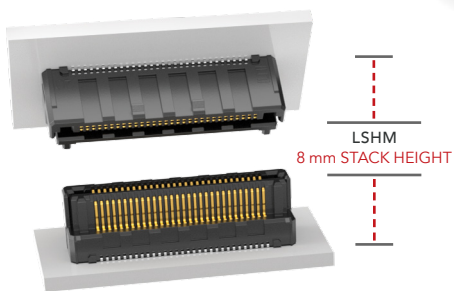
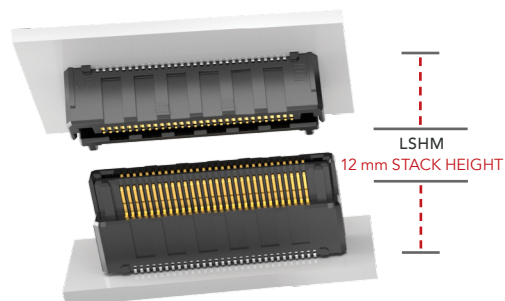
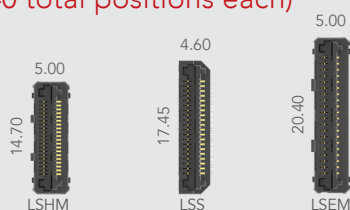
(0.50 mm) .0197" PITCH

FEATURES & BENEFITS

- Ten stack height options from 5.00 mm to 12.00 mm
 - 0.50 mm, 0.635 mm or 0.80 mm pitches
 - Audible click when mated
 - Mating and unmating forces approximately 4-6x greater than typical micro pitch connectors
 - Self-mating system reduces inventory cost
 - Parallel, perpendicular and coplanar systems
 - Shielded and lubricated options
 - Severe Environment Testing qualified (LSHM); aligns with MIL-DTL-55302.
- Visit samtec.com/set



SLIM BODY DESIGNS (40 total positions each)



KEY SPECIFICATIONS

INSULATOR MATERIAL	CONTACT MATERIAL	PLATING	OPERATING TEMP RANGE	CURRENT RATING	SMT COPLANARITY	LEAD-FREE SOLDERABLE
Black LCP	Phosphor Bronze	Au or Sn over 50 µ" (1.27 µm) Ni	-55 °C to +125 °C	LSHM: 2.0 A per pin LSS: 1.7 A per pin LSEM: 1.8 A per pin	(0.10 mm) .004" max	Yes

(0.635 mm) .025" PITCH • RUGGED HERMAPHRODITIC CONNECTORS

LSS	-	1	NO. PINS PER ROW	-	LEAD STYLE	-	PLATING OPTION	-	DV	-	A	-	OPTION	-	"X"R
-----	---	---	------------------	---	------------	---	----------------	---	----	---	---	---	--------	---	------

10, 20,
30, 40, 50

Specify
LEAD
STYLE
from
chart

-F
= Gold flash
on contact,
Matte Tin on tail

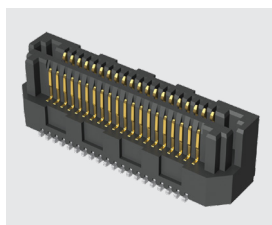
-L
= 10 μ" (0.25 μm)
Gold on contact,
Matte Tin on tail

-K
= (3.50 mm)
.138" DIA
Polyimide film
Pick & Place Pad

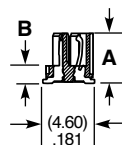
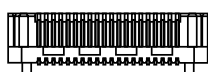
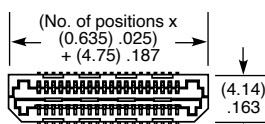
Leave blank for
Tray Packaging

-TR
= Tape & Reel

-FR
= Full Reel
Tape & Reel
(must order
maximum
quantity per reel;
contact Samtec for
quantity breaks)



LEAD STYLE	A	B
-01	(4.45) .1752	(1.59) .0628
-02	(7.45) .2933	(4.59) .1808
-03	(5.45) .2146	(2.59) .1021



LEAD STYLE	MATED HEIGHT *
-01 & -01	(6.00) .236
-01 & -03	(7.00) .276
-03 & -03	(8.00) .315
-01 & -02	(9.00) .354
-02 & -03	(10.00) .394
-02 & -02	(12.00) .472

*Processing conditions will
affect mated height.

View complete specifications at: samtec.com?LSS

(0.80 mm) .0315" PITCH • RUGGED HERMAPHRODITIC CONNECTORS

LSEM	-	1	NO. PINS PER ROW	-	LEAD STYLE	-	PLATING OPTION	-	TAIL OPTION	-	A	-	N	-	K	-	"X"R
------	---	---	------------------	---	------------	---	----------------	---	-------------	---	---	---	---	---	---	---	------

20, 30, 40, 50

Specify
LEAD
STYLE
from
chart

-F
= Gold flash
on contact,
Matte Tin on tail

-L
= 10 μ" (0.25 μm)
Gold on contact,
Matte Tin on tail

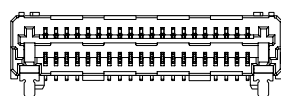
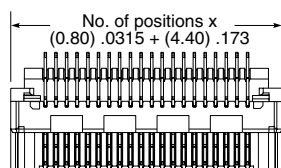
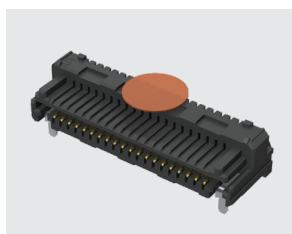
-DV
= Vertical

-DH
= Right-angle
(Lead style
-01 only)

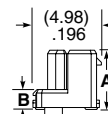
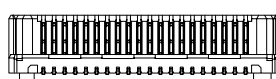
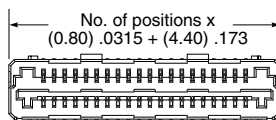
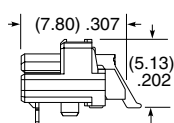
-K
= (3.50 mm)
.138" DIA
Polyimide film
Pick & Place Pad

-TR
= Tape & Reel

-FR
= Full Reel
Tape & Reel
(must order
maximum
quantity per reel;
contact Samtec for
quantity breaks)



LEAD STYLE	A	B
-01 (-DH only)	N/A	NA
-03.0	(4.45) .175	(1.50) .059
-04.0	(5.45) .215	(2.50) .098
-06.0	(7.45) .293	(4.50) .177



LEAD STYLE	MATED HEIGHT *
-03.0 & -03.0	(6.00) .236
-03.0 & -04.0	(7.00) .276
-04.0 & -04.0	(8.00) .315
-03.0 & -06.0	(9.00) .354
-04.0 & -06.0	(10.00) .394
-06.0 & -06.0	(12.00) .472

*Processing conditions will
affect mated height.

Note:
Some lengths, styles and
options are non-standard,
non-returnable.

-DH

-DV

View complete specifications at: samtec.com?LSEM