

## NOTE:

## MATERIAL

HOUSING:

CONTACT:

NUT:

SHELL:

O-RING:

X-SHELL:

## FINISH

CONTACT:

NUT:

SHELL:

X-SHELL:

## ELECTRICAL

RATED CURRENT:

RATED VOLTAGE:

INSULATION RESISTANCE:

CONTACT RESISTANCE:

WATER PROOF:

## ENVIRONMENT

OPERATION TEMPERATURE:

PA UL94V-0, BLACK  
BRASS  
BRASS  
BRASS  
EPDM, BLACK  
ZINC ALLOY

GOLD 10u" MIN.  
OVER 50u" NICKEL  
NICKEL PLATED  
NICKEL PLATED  
NICKEL PLATED

0.5A

50VAC/60VDC

100 MΩhms MIN.

10 mΩhms MAX.

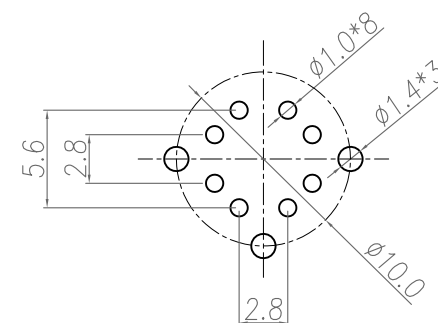
IP67

-40°C TO +85°C

860-X08-213R0RY

3 = BRASS/NICKEL SHELL & NUT  
S = STAINLESS STEEL SHELL & NUT

1 = GOLD FLASH  
4 = 10u" GOLD



RECOMMEND P.C.B LAYOUT

RoHS COMPLIANT



THESE DRAWINGS AND SPECIFICATIONS ARE THE PROPERTY OF NorComp AND SHALL NOT BE REPRODUCED, COPIED OR USED AS THE BASIS FOR THE MANUFACTURE OR SALE OF APPARATUS WITHOUT WRITTEN PERMISSION.

DRAWN:

J. KADEL

DATE:

05/02/2019

UNITS = mm

DO NOT SCALE FROM DRAWING

NorComp

SCALE:

NTS

SHEET

1

OF

1

REV

3

DWG NO.

860-X08-213R0RY