

## NOTE:

## MATERIAL

M12 INSULATOR

PA66, UL94V-0, BLACK

M12 CONTACT

GOLD FLASH PLATED BRASS

RJ45 CONTACT

GOLD FLASH PLATED BRASS

M12 SHELL &amp; NUT

NICKEL PLATED BRASS

RJ45 SHIELD

NICKEL PLATED BRASS

O-RING

FKM

## ELECTRICAL

RATED CURRENT

1.5A

VOLTAGE

100VDC

INSULATOR RESISTANCE

100 MOhms MIN.

CONTACT RESISTANCE

10 mOhms MAX.

MATING CYCLES

100 CYCLES MIN

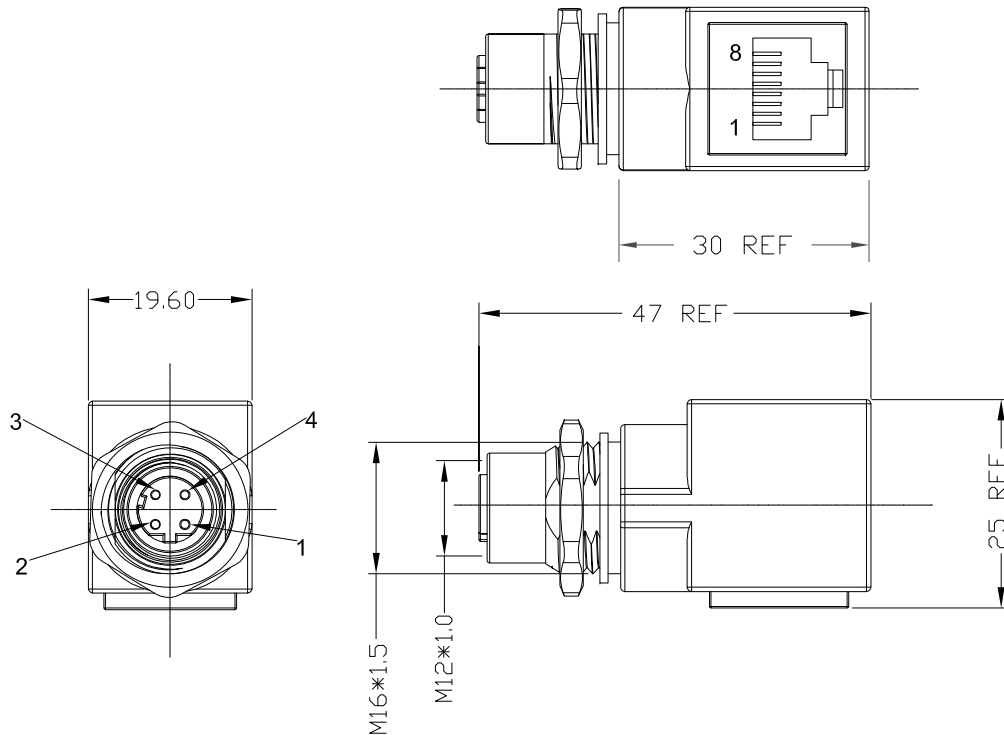
## ENVIRONMENT

OPERATION TEMPERATURE

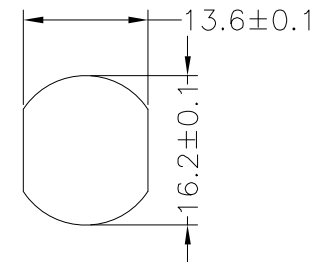
-40°C TO +85°C

IP RATING

IP67 (UNCOUPLED &amp; COUPLED)



M12		RJ45
1	_____	1
3	_____	2
2	_____	3
4	_____	6
SHELL	_____	SHELL



RECOMMENDED PANEL CUTOUT

RoHS COMPLIANT



THESE DRAWINGS AND SPECIFICATIONS ARE THE PROPERTY OF NorComp AND SHALL NOT BE REPRODUCED, COPIED OR USED AS THE BASIS FOR THE MANUFACTURE OR SALE OF APPARATUS WITHOUT WRITTEN PERMISSION.

DRAWN:

J. KADEL

DATE:

12/20/2021

TOLERANCES  
 .x ±0.5  
 .xx ±0.2  
 ANGULAR ±1°

UNITS = mm

DO NOT SCALE FROM DRAWING

NorComp

SCALE:

NTS

SHEET

OF

1

1

REV

1

DWG NO.

RJM12FD04RA001