

DESCRIPTION: M12 5 PIN MALE P/E S/C FRONT PANEL MOUNT

SPECIFICATIONS:

MATERIALS:

HOUSING:	PA66, UL94 V-0, BLACK
CONTACT:	BRASS
NUT:	BRASS
SHELL:	BRASS
ORING:	EPDM

FINISH:

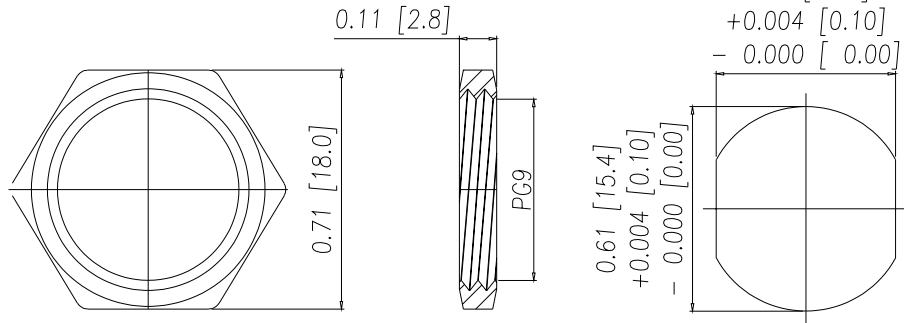
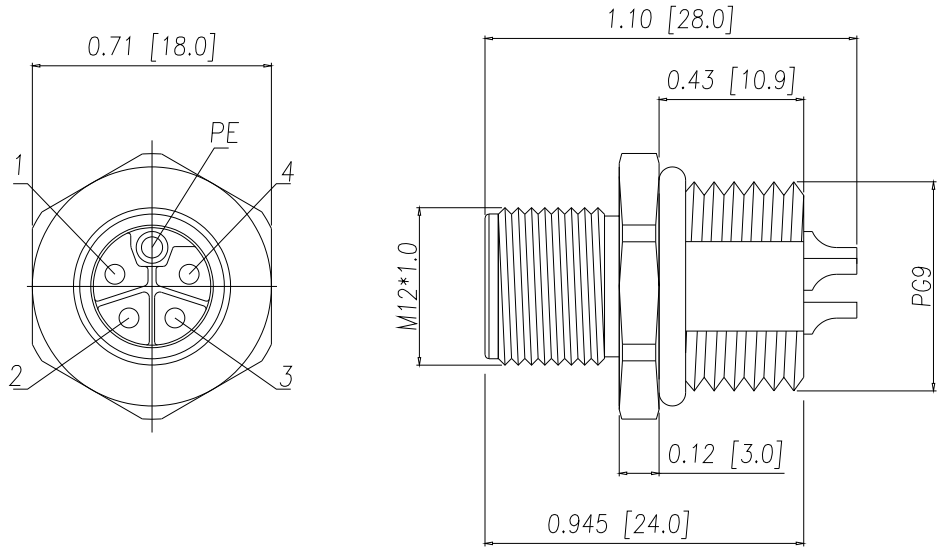
CONTACT:	GOLD PLATED OVER NICKEL (SEE P/N KEY BELOW)
NUT:	NICKEL PLATED
SHELL:	NICKEL PLATED

ELECTRICAL:

RATED CURRENT:	16A
RATED VOLTAGE:	63V
MAX WIRE AWG:	14

ENVIRONMENT:

OPERATING TEMPERATURE:	-40°C TO 85°C
WATER PROOF:	IP67



NUT

RECOMMEND PANEL CUT-OUT

859-LP5-103R00Y

3 = BRASS/NICKEL SHELL & NUT
S = STAINLESS STEEL (SS) SHELL & NUT

1 = GOLD FLASH
4 = 10u" GOLD

RoHS COMPLIANT



THESE DRAWINGS AND SPECIFICATIONS ARE THE PROPERTY OF NorComp AND SHALL NOT BE REPRODUCED, COPIED OR USED AS THE BASIS FOR THE MANUFACTURE OR SALE OF APPARATUS WITHOUT WRITTEN PERMISSION.

DRAWN:
J. KADEL

DATE:
08/01/2018

UNITS = inch [mm]

DO NOT SCALE FROM DRAWING

NorComp

SCALE:
NTS

SHEET OF
1 1

REV
6

DWG NO.

859-LP5-103R00Y